

SCHOOL Dog Gone Wild Chapter 2

When our family travels, Dad drives, Mom rides shotgun, and Chloe and I sit in the backseat playing games, singing songs, and even watching DVDs from time to time. I never know where we are, where we are going, and how long it will take to get there, so "Are we there yet?" is my standard question. Usually, Dad answers, "Not yet, Woody. It's going to be another hour or so, just sit tight." This time, Dad surprised me. "Woody, I thought you'd never ask. Your next challenge is to study the map and navigate our course," Dad explained as Mom handed Chloe and me a map. There was one problem. How could I navigate when I didn't know what the word meant? Mom explained that navigate meant to direct, to guide, or to plot the course of the trip. Dad wanted Chloe and me to look at the map and direct him to our destination.

"Destination? That was my second problem. Where were we going? 'We're going to the Daniel Boone Campground,'" Dad informed, "Daniel Boone?"

I looked at Chloe. She was studying the colorful map. I knew this was a challenge, but I needed help. "Chloe, can you help me get started?" "Sure Woody. First, look at the map around. It's upside down." No wonder I was confused! Ah, that was better! "Chloe, how about another?" "I'd love to help, Woody, but I'm confused, too." Chloe pulled out her compass. It showed we were traveling east. "The sun also tells us we are traveling east," Mom said. "The sun rises every morning in the east. If the sun comes up in the east, and we're driving into the sun, we must be traveling east." Moms are so smart!

"But how can I find east on the map?" I asked. Mom told me to look at the legend. First navigate, now legend. I sure wish I'd packed a dictionary. Seeing my confusion, Mom continued. "The legend is the chart on the map that explains the symbols." I found the chart. I saw N at the top, S at the bottom, E on the right side, and W on the left side. "E for east! We are traveling to the right side of the map!" said, as my paw traveled toward the right side of the paper, available at Fleming County Farm Supply and Jabetown Mill. "But where?" "As I was asking my questions, Chloe said, 'Look! I found Daniel Boone Campground!'"

I asked Chloe to show me. She pointed to the right corner of the map. "Woody, do you see the green trees and the little green symbol that looks like a tent?" I squinted at the tiny drawing and saw what looked like woods. In little letters, I saw the words "Daniel Boone Campground." I see it too! And look, we're close. Slow down, Dad! We're only about three inches away!"

Everyone laughed! It was clear I knew nothing about maps so I swallowed my pride and asked for help. "Dad, I know navigating is a challenge between Chloe and me, but just this once, can Chloe and I work together?" I was expecting Dad to tell me to keep trying, so I was surprised when he said, "Great idea, Woody. A rule in surviving is working together to accomplish a task. So yes, this time, instead of competing with Chloe, the two of you can work together." "Wow! I thought you were going to tell me not to give up!" Dad explained I wasn't giving up; I was just changing my game plan.

"With the help of the legend, Chloe and I discovered that the large, colored lines were major highways, the broken lines were little roads, the little blue lines were rivers, and the numbers were the highway numbers." "Woody, Chloe said, 'Why don't you look out the window to see if you see any road signs that will give us clues as to what highway we are on?' 'Sure!' I said. 'Hey! I just saw a sign that looked like a reindeer walking across the road. How silly! A reindeer should know this is a bad place to cross the road!' Dad explained the sign wasn't for deer, but so drivers would know to slow down because deer are in the area. 'Ah! That makes sense.' Right after the deer sign, I saw US HWY 80. 'Chloe, we are on United States Highway 80!' I found it! I said '80.' Chloe said, 'I found it! I found it!' We now knew where we were, where we were going and following the colored line we now knew how to get there. But wait, this tiny little road looked like it could be a shortcut."

Thanks to LG&E/KU both EON companies and KPA for making this project possible. Thanks to the Kentucky Secretary of State for sponsoring the new podcast. For podcast questions and activities go online to www.kypress.com



Jerry Patton's jersey retired
Before the final game of the Nicholas County Middle School football season, 14-year-old Jerry Patton's jersey was retired.

Patton, an eight grade offensive lineman passed away last month, only days after being diagnosed with meningitis. Middle School Coach Chris Fryman says Patton's #62 jersey is the first one to be retired in the school's history. The announcement came as Jerry's twin brother, Jackie, and their mother Joyce, stepped on the field before a moment of silence in honor of the late Jerry Patton.

Having an event?
Let the word out!
Contact us today to get it on the Calendar of Events
City of Carlisle 285-5457

Ladobee's STEAK HOUSE
Open Wednesday thru Saturday at 11 a.m.
Corner of US 68 & Lake Rd., Carlisle, KY - 859-289-4800
NIGHTLY STEAK SPECIALS

HINTON MILLS
SINCE 1918
Serving Farmers
Frank Hinton & Son (606) 876-3171
Fleming Co. Farm Supply (606) 845-1821
Jabetown Mill (606) 267-2161
May's Lick Mill (606) 763-6602
www.hintonmills.com

Hinton Feed Days Customer appreciation event
October 1, 2 & 3

- May's Lick Mill - Thursday, October 1st -- 4 - 7 PM
- Jabetown Mill - Friday, October 2nd -- 10 - 1 PM
- (Orchard tour at 9 AM - call for details)
- Fleming County Farm Supply - Friday, October 2nd -- 4 PM - 7 PM
- Frank Hinton & Son - Saturday, October 3rd -- 7:30 - 2 PM

Stop in at Hinton Mills to check out our new line of deer products including Buck Jam, C'mere Deer, Acorn Frency and Deer Cain, as well as a wide range of Jack's Deer Lures - now available at Fleming County Farm Supply and Jabetown Mill. We also carry Trophy Rocks, Ultralyte White Tail Deer Blocks and Hinton's Wildlife Corn at all four of our locations. While you're in, check out our insulated camouflage bibs and boots.

Drink a better tasting coffee at a lower price with Hinton Mills very own Grandpa's Choice Coffee - inspired by all our grandpas - Grandpa's Choice is certified Kentucky Proud, USDA organic and only available at Hinton Mills. Grandpa's Choice is the kind of coffee your grandpa would have loved, a top quality product at a bargain of a price. Get a free cup October 1st - 3rd during Feed Days.

Join Buffalo Trace area county agents for a chute-side BQA training at 6:30 PM on Thursday, October 15th at the Fleming County High School Ag Barn. Beef Quality Assurance training is needed for cost-share programs. The meal is sponsored by Hinton Mills.

Get your picture made with Big John at Fleming County Farm Supply. You can't miss him, but he's only around for a limited time.

Sign up for our free drawing to win a limited edition, custom made pen/rack which includes a penny from each of the past 100 years. Sign up through the end of Feed Days.

Hinton Mills and Ultralyte Nutritional Supplements will hold a mineral meeting at the Park Stockyards on Thursday, October 8, 2009.

We think we have something for everyone

FARM NEWS



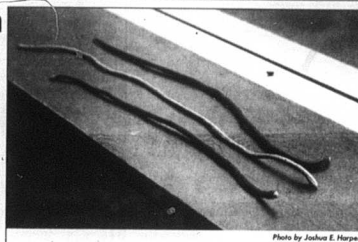
Housing Burley
A group of hand workers trying to get the tobacco housed on the farm of Steve Vice on Moorefield Road before the cooler weather sets in.

Leaf mulch

As Mother Nature adorns the trees in your yard with riotous reds, vibrant yellows and exotic oranges, you can easily get swept up in the romance of the season - until those leaves turn brown, drop from the branches and litter your lawn. Then you start to think of the hours of backbreaking raking work ahead of you.

This autumn, why not try working with Mother Nature by mulching those leaves instead of raking, bagging and considering them to a landfill?

Leaf mulching is a time-saving, environmentally friendly way to deal with fallen leaves. Plus, if you live in a community that has cut back on collection services due to the economy, mulching can solve your dilemma of what to do with the leaves littering your lawn. In fact, turf benefits by receiving more nutrients when you mulch fall leaves back into the lawn instead of raking them, according to a study by Michigan State University turfgrass researcher Thom Nikolai and Scott/McNeal/Oni scientists. Recycling fallen leaves saves time and money, adds nutrients to the soil, speeds spring greening and reduces weeds.



Plant or animal?
Have you ever seen this before? These snake green beans were raised in Ohio.

Know a Good Neighbor?

Tell us about the good citizens in the community.
Call us at
The Carlisle Mercury
880-6425
e-mail

WEDCO
District Health Department and Home Health Agency
The Wedco District Health Department is a member organization of the Board of Health Services. We are committed to the health of our community. We are located at the intersection of the Nicholas, Nicholas, and West many others.
Starting salary \$8.82 - 10.75. Applications and full listing of qualifications may be obtained at the Wedco District Health Department, 302 Oodville Ave., Cynthiana, Kentucky, 41031. Completed application will be accepted until close of Business (4:30 pm) on October 1, 2009. For additional information, contact Lenora, at 859-2348750. EOE

Today's Menu:
Value Sandwich Meal
Corn Dog \$.99 • BBQ Pork Pattie \$1.49
Chicken Patties \$.99
Double Cheeseburger \$1.49
Add French Fries & Drink for \$1.99 extra

Kitchen Hours
Open
Mon-Thurs 5:00 a.m. - 7:00 p.m.
Fri-Sat 5:00 a.m. - 9:00 p.m.
Sun 7:00 a.m. - 5:00 p.m.

MARATHON
5399 Concrete Rd. • Carlisle
859-289-6118

WEEKLY HOT BUY

\$8.99

Results™ Premium Deer Feed
40 pounds. 20% protein feed with moisture resistant RainShed™ technology. Enhanced with Devour™ flavor/scent.
55717016

SOUTHERN STATES
Brands you trust. People who know.

Price good through 9/30/2009 or while supplies last
www.southernstates.com ©2008 Southern States Cooperative Incorporated. All Rights Reserved.

CONSIGNMENT AUCTION

Rt. 52 Ripley, OH 45167
Sun, Sept. 27th 10:00
New Building Supplies
600 Sheets of Matlax
Roofing - Painted & Galvalume
Over 40,000 Sq. Ft. of Flooring
Great Assortment of Beautiful Pre-finished Hardwood Flg up to 5" wide - Ceramic, Porcelain & Limestone Tile
Laminite Flg - Rolls of Carpet, Pad & Vinyl
Kitchen Cabinet Sets - Ext. & Int. Doors - Windows
House Wrap - Composites
Vanities - Door Handles
Facet Sets - Ladders
Treated & Dimensional Lumber - OSB Board
7-11 - Trailers - New
7-12 Enclosed Motorcycle Trailer - 10'x12' Dump Trailers - Utility Trailers & Others
Scratch & Dent Appliances - Airt. Concrete Accessories - incl. 50 Basement Windows - Caulking & More - '91 International 16' Flat Bed Truck - '96 Ford F-350 Diesel Dually - '04 Ford F-250 Van - '98 Valley GN Horse Trailer 27' - 10' Bush Hog Rotary Mower - 1st Time Buyers Call or See Web for Complete List & Terms - Items To Be Added Daily
Towler's Auction Service Inc.
Randy Myers - Auctioneer
513-309-7779
513-315-4360
www.auctionzip.com #12784