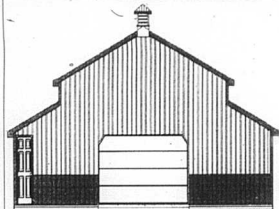
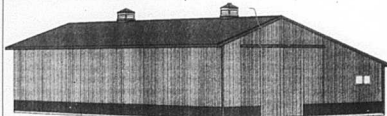


## WAGON FLATS W/TREATED DECKS

16' \$429.99  
18' \$449.99  
20' \$469.99

## CUSTOMIZED POLE BARN PACKAGES

PACKAGES INCLUDES PLANS, 3D VIEW, LAYOUT DRAWING  
AND A COMPLETE LIST OF MATERIALS.



## QUALITY METAL ROOFING AND SIDING

#2 CLASSIC RIB METAL NO WARRANTY \$1.69 LIN. FT.

COLORS AVAILABLE  
BRIGHT WHITE  
LIGHT STONE  
ASH GRAY  
MOCHA TAN  
BROWN  
RED  
ZINC GRAY



CUSTOM CUT TO THE INCH  
PLEASE ALLOW 1 WEEK DELIVERY

## JOBSITE STORAGE BOXES

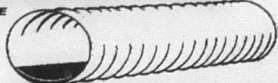


6861447 36" \$177.55  
636990 42" \$211.59  
9490616 48" \$252.99

## STEEL GALVANIZED CULVERT PIPE 16 GAUGE

DIAMETER LENGTH SALE PRICE

12"	10'	\$65.99
12"	15'	\$97.99
12"	20'	\$132.47
15"	10'	\$96.59
15"	15'	\$122.99
15"	20'	\$176.63
18"	10'	\$211.59
18"	15'	\$264.95
18"	20'	\$352.35
24"	10'	\$235.51
24"	15'	\$281.51
24"	20'	\$351.43
30"	10'	\$422.27
30"	15'	\$549.99
30"	20'	\$619.99



## PLASTIC DOUBLE WALL PIPE

DIAMETER LENGTH SALE PRICE

8"	20'	\$79.99
12"	20'	\$123.67
15"	20'	\$139.57
18"	20'	\$229.99
24"	20'	\$334.87

## FENCE BOARDS

ITEM#	DESCRIPTION	PRICE
1616HEM	1 X 6 X 16 HEMLOCK	\$5.60
1614OAK	1 X 6 X 14 OAK	\$4.69
1616OAK	1 X 6 X 16 OAK	\$6.49
1616TPFB01	1 X 6 X 16 TREATED POPLAR	\$6.49



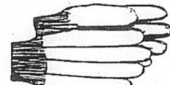
## TREATED WOOD FENCE POST



ITEM#	DIAMETER	LENGTH	PRICE
TFP38R	3-1/2" ROUND	8'	\$3.99
TFP48R	4" ROUND	8'	\$5.99
TFP57RS	5-6" ROUND SHARP	7'	\$7.49
TFP57R	5" BLUNT	7'	\$6.99
TFP58R	5" ROUND	8'	\$8.49
TFP68R	6" ROUND	8'	\$10.79

## MEN'S JERSEY WORK GLOVES

\$3.99  
A DOZEN



BJG

## BROWN JERSEY GLOVES



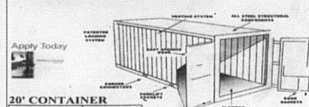
6 PACK  
\$2.19  
BJG6P

## HEMLOCK BOARDS

	8'	10'	12'	14'	16'
1X2	\$ 1.47	\$ 1.83	\$ 2.20		
1X4	\$ 1.87	\$ 2.33	\$ 2.80	\$ 3.27	\$ 3.73
1X6	\$ 2.80	\$ 3.50	\$ 4.20	\$ 4.90	\$ 5.60
1X8	\$ 3.73	\$ 4.67	\$ 5.60	\$ 6.53	\$ 7.47
1X10	\$ 5.33	\$ 6.67	\$ 8.00	\$ 9.33	\$ 10.66
1X12	\$ 6.40	\$ 8.00	\$ 9.60	\$ 11.20	\$ 12.80

TOP QUALITY, SUITABLE FOR BARN SIDING OR BOARD AND  
BATTEN RUSTIC HOUSE SIDING

## CARGO CONTAINERS



Apply Today

20' CONTAINER	PRINCIPAL \$2,119.99
RATE	9.99%
# PAYMENTS	36
PAYMENT	\$68.40

THE MONTHLY PAYMENTS  
FIGURED HERE ARE BASED  
ON THE CONTAINER PRICE  
AND 6% K.V. SALES TAX.

40' CONTAINER	PRINCIPAL \$2,649.99
RATE	9.99%
# PAYMENTS	36
PAYMENT	\$85.50

ADDITIONAL DELIVERY FEE  
MAY APPLY.

VALID ON PURCHASES MADE  
ON A HOME SOURCE CREDIT  
CARD DECISION IS MADE  
WITHIN MINUTES.

LENGTH	HEIGHT	WIDTH	DOOR
20'	8'6"	8'6"	8'6"
40'	8'6"	17'6"	8'6"

ALCO Aluminum Columns  
Load Bearing  
Economical  
Maintenance Free  
Easy to Install  
Residential or Commercial Applications  
New Construction or Remodeling  
Round or Square Fluted  
Durable Powder Coat Finish

ROUND COLUMNS  
6X8 \$69.99  
6X10 \$98.16  
8X8 \$96.60  
8X10 \$114.99

SQUARE COLUMNS  
6X8 \$ 90.14  
8X8 \$126.94



## HERITAGE 30 AR SHINGLES 30 YEAR WARRANTY

An Inside Look at Heritage Quality Construction



Heritage 30 AR Shingles are an advanced model in TANKTOP Heritage Series of premium asphalt architectural shingles. They are designed to give you the rugged beauty of wood shake shingles without the high costs or liabilities. Heritage 30 AR Shingles feature Classic Heritage Colors or America's Natural Colors, are UL listed for wind resistance and Class A fire resistance, and come with a 30-year limited warranty.

The Manufacturer's 30-year limited warranty requires a minimum 15-year limited warranty. Heritage 30 AR Shingles are the highest-quality laminated shingles available in their class.

Tough, laminated, double-layer, random-vent design. Made with TANKTOP's fiberglass mat, Heritage 30 AR Shingles are the highest-quality laminated shingles available in their class.

Backed by a 30-year limited warranty, 3-year full start, limited transferability, a 10-year limited 10-year full start warranty, and a 10-year limited warranty against damage from wind up to 70 mph.

## ELITE GLASS-SEAL AR 3-TAB SHINGLES 25 YEAR WARRANTY

\$33.87 SQ  
51.29 BUNDLE X 3 BUNDLES EQUAL A SQUARE

RUSTIC BLACK  
(REGARD)

These high-quality, relief 3-tab shingles will give you years of maintenance-free protection with style. Featuring durable fiberglass construction designed to protect roofs from discoloration in areas of high humidity, these popular shingles provide economical, reliable roofing protection as well as fire and wind resistance.



NORANDEX/REYNOLDS  
DISTRIBUTION CO.

DOUBLE 4.5 DUTCHLAP  
IN STOCK COLORS ONLY

APRIL LILAC SILVER  
CLASSIC ALMOND VILLAGE SANDSTONE  
FRENCH CREAM WHITE  
GRANITE GRAY WESTERN SIERRA

\$43.89 per sq.  
\$3.99 per pc.

## Series 4000 Replacement Windows

ITEM #	SIZE	R-FACTOR	SO.FT.	SALE PRICE
FOIR118FB	3-1/2"X18"	R11	88.12	\$18.33
FOIR118FPR	3-1/2"X18"	R11	88	\$10.15
FOIR118FR	3-1/2"X18"	R11	88.12	\$17.89
FOIR123FR	3-1/2"X23"	R11	138.12	\$27.39
FOIR1318FR	3-6"X18"	R13	88.12	\$22.94
FOIR1818FR	6-1/2"X18"	R19	48.96	\$15.41
FOIR1818FPR	6-1/2"X18"	R19	30	\$9.74
FOIR1818FR	6-1/2"X18"	R19	48.96	\$15.41
FOIR1823FR	6-1/2"X23"	R19	78.07	\$23.63
FOIR3018FR	9-1/2"X18"	R20	83.23	\$26.33
FOIR3024FR	9-1/2"X24"	R20	88	\$38.58

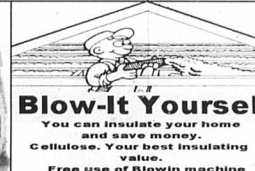


Series 4000 vinyl replacement windows from BJK are available in a variety of sizes and colors. They are designed to give you the rugged beauty of wood shake shingles without the high costs or liabilities. Heritage 30 AR Shingles feature Classic Heritage Colors or America's Natural Colors, are UL listed for wind resistance and Class A fire resistance, and come with a 30-year limited warranty.

## SERIES 4000 VINYL REPLACEMENT WINDOW

UNITED INCHES	DOUBLE HUNG LOW-E	FULL GLASS SCREEN	INTERNAL	
6-64	\$ 108.81	\$ 18.70	\$ 10.95	\$ 19.99
65-69	\$ 115.61	\$ 20.01	\$ 11.16	\$ 19.99
70-74	\$ 122.41	\$ 21.25	\$ 11.67	\$ 19.99
75-79	\$ 129.21	\$ 22.56	\$ 12.18	\$ 19.99
80-84	\$ 136.01	\$ 23.80	\$ 12.69	\$ 19.99
85-89	\$ 142.81	\$ 25.11	\$ 13.49	\$ 19.99
90-94	\$ 149.61	\$ 26.35	\$ 13.71	\$ 19.99
95-99	\$ 156.41	\$ 27.20	\$ 14.22	\$ 19.99
100-104	\$ 163.22	\$ 28.90	\$ 14.73	\$ 19.99

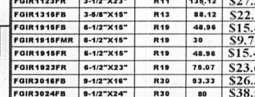
NOTE: WINDOW WIDTH + WINDOW HEIGHT = UNITED INCHES  
EXAMPLE A 36" WIDE, 48" TALL WINDOW = 84 UNITED INCHES = \$186.01  
BASE PRICE IS FOR A 1 LITE UNIT WITH 1/2 SCREEN



Blow-It Yourself  
You can insulate your home  
and save money.  
Cellulose. Your best insulating  
value.  
Free use of Blown machine  
w/purchase of 20 bags

AMERICA ENERGY  
FIBERGLASS INSULATION

ITEM #	SIZE	R-FACTOR	SO.FT.	SALE PRICE
FOIR118FB	3-1/2"X18"	R11	88.12	\$18.33
FOIR118FPR	3-1/2"X18"	R11	88	\$10.15
FOIR118FR	3-1/2"X18"	R11	88.12	\$17.89
FOIR123FR	3-1/2"X23"	R11	138.12	\$27.39
FOIR1318FR	3-6"X18"	R13	88.12	\$22.94
FOIR1818FR	6-1/2"X18"	R19	48.96	\$15.41
FOIR1818FPR	6-1/2"X18"	R19	30	\$9.74
FOIR1818FR	6-1/2"X18"	R19	48.96	\$15.41
FOIR1823FR	6-1/2"X23"	R19	78.07	\$23.63
FOIR3018FR	9-1/2"X18"	R20	83.23	\$26.33
FOIR3024FR	9-1/2"X24"	R20	88	\$38.58



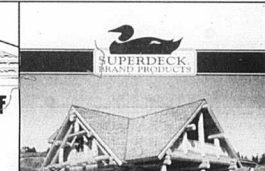
5/8 T-111  
\$19.99

Series 4000 vinyl replacement windows from BJK are available in a variety of sizes and colors. They are designed to give you the rugged beauty of wood shake shingles without the high costs or liabilities. Heritage 30 AR Shingles feature Classic Heritage Colors or America's Natural Colors, are UL listed for wind resistance and Class A fire resistance, and come with a 30-year limited warranty.

## SERIES 4000 VINYL REPLACEMENT WINDOW

UNITED INCHES	DOUBLE HUNG LOW-E	FULL GLASS SCREEN	INTERNAL	
6-64	\$ 108.81	\$ 18.70	\$ 10.95	\$ 19.99
65-69	\$ 115.61	\$ 20.01	\$ 11.16	\$ 19.99
70-74	\$ 122.41	\$ 21.25	\$ 11.67	\$ 19.99
75-79	\$ 129.21	\$ 22.56	\$ 12.18	\$ 19.99
80-84	\$ 136.01	\$ 23.80	\$ 12.69	\$ 19.99
85-89	\$ 142.81	\$ 25.11	\$ 13.49	\$ 19.99
90-94	\$ 149.61	\$ 26.35	\$ 13.71	\$ 19.99
95-99	\$ 156.41	\$ 27.20	\$ 14.22	\$ 19.99
100-104	\$ 163.22	\$ 28.90	\$ 14.73	\$ 19.99

NOTE: WINDOW WIDTH + WINDOW HEIGHT = UNITED INCHES  
EXAMPLE A 36" WIDE, 48" TALL WINDOW = 84 UNITED INCHES = \$186.01  
BASE PRICE IS FOR A 1 LITE UNIT WITH 1/2 SCREEN



LOG HOME OIL FINISH™

• ONE-COAT SYSTEM  
• PROTECTS & BLUE FINISH  
• RESISTS WATER DAMAGE  
• LONG-LASTING COLOR

\$116.99  
\$116.99

## LOG CABIN SIDING



5/8 T-111  
\$19.99

The rustic beauty and comfort of a log cabin is now available for homes with conventional wall construction. Graham offers the best of both past and present through the log cabin siding. The shipping designed log cabin siding allows the builder to select his insulating materials as well as the thickness of the walls.

T-111 Siding is an exterior-grade 8" on center panel.  
T-111 has a variety of exterior and interior applications including walls, ceilings, fences and soffits.

## 1/2" X 20"

	1 TON	2 TON	4 TON	6 TON	10 TON
\$/PER PC	\$ 5.29	\$ 5.19	\$ 5.09	\$ 4.99	\$ 4.89
\$/TON	\$ 793.50	\$ 778.50	\$ 763.50	\$ 748.50	\$ 733.50



\$5.39 SINGLE PIECE  
150 PCS 20" REBAR PER TON