

**WAGON FLATS
W/TREATED DECKS**

16' \$429.99
18' \$449.99
20' \$469.99

FENCE BOARDS



ITEM#	DESCRIPTION	PRICE
1616HEM	1 X 6 X 16 HEMLOCK	\$5.60
1614OAK	1 X 6 X 14 OAK	\$4.69
1616OAK	1 X 6 X 16 OAK	\$6.49
1616TPFB01	1 X 6 X 16 TREATED POPLAR	\$6.49

STEEL GALVINIZED CULVERT PIPE 16 GAUGE

DIAMETER LENGTH SALE PRICE

12"	10'	\$65.99
12"	15'	\$97.99
12"	20'	\$133.47
18"	10'	\$96.99
18"	15'	\$142.99
18"	20'	\$176.43
18"	30'	\$211.59
18"	30'	\$264.95
18"	40'	\$352.35
18"	20'	\$235.51
24"	20'	\$281.51
30"	20'	\$351.43
36"	20'	\$422.27
42"	20'	\$549.99
48"	20'	\$619.99



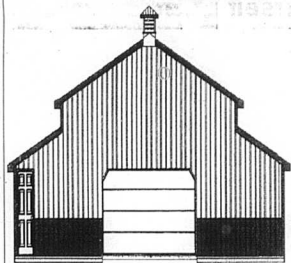
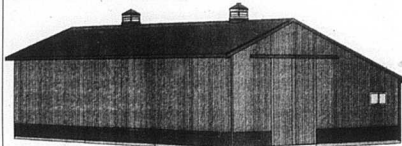
PLASTIC DOUBLE WALL PIPE

DIAMETER LENGTH SALE PRICE

12"	20'	\$ 5121.43
18"	20'	\$ 3144.43
18"	20'	\$ 5219.99
24"	20'	\$ 5334.87

CUSTOMIZED POLE BARN PACKAGES

PACKAGES INCLUDES PLANS, 3D VIEW, LAYOUT DRAWING AND A COMPLETE LIST OF MATERIALS.

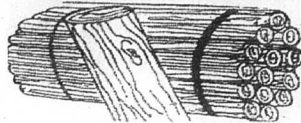


TrackMaster

TrackMaster rail and hangers combine the easy mounting and stability of box-rail with the smooth operation of round. The result is a round rail system that is easier to install, easier to operate, self-cleaning, and longer lasting. Supporting a 600lb door, TrackMaster hangers have been torture tested without failure through over 10,000 cycles of opening and closing a door! (That's opening and closing a door once a day for 30 years.)

- Corrosion-resistant, zinc-plated truck frame
- Advanced rail design with flat top and sides for easier mounting and better stability. Round body for self-cleaning and smoother operation.
- Strong, induction-hardened, zinc-plated steel axles
- Flexible trunnion design so door resists damage and adjusts easier.

TREATED WOOD FENCE POST



ITEM#	DIAMETER	LENGTH	PRICE
TFP3BR	3-1/2" ROUND	8'	\$3.99
TFP4BR	4" ROUND	8'	\$5.99
TFP57RS	5-6" ROUND SHARP	7'	\$7.49
TFP57R	5-6" ROUND BLUNT	7'	\$7.29
TFP5BR	5" ROUND	8'	\$8.49
TFP6BR	6" ROUND	8'	\$10.79

FENCE AND BARN PAINT



Premium asphalt fence paint, great for wood and metal surfaces. Weather proofs. Prevent rot and decay. Stops rust. Termite repellent. Use above and below ground. Long lasting. Black color.

WB445657 BREWER COTE BLACK ASPHLT 5 GAL BUCKET \$23.99

QUALITY METAL ROOFING AND SIDING

#2 CLASSIC RIB METAL NO WARRANTY \$1.69 LIN. FT.

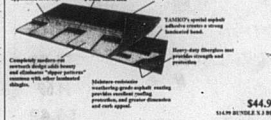
COLORS AVAILABLE	OCEAN BLUE
BRIGHT WHITE	FOREST GREEN
WHITE	CHARCOAL
LIGHT STONE	BLACK
ASH GRAY	BURGUNDY
MOCHA TAN	HAWAIIAN BLUE
BROWN	TAUPE
RED	BURNISHED SLATE
ZINC GRAY	



CUSTOM CUT TO THE INCH PLEASE ALLOW 1 WEEK FOR DELIVERY

HERITAGE 30 AR SHINGLES 30 YEAR WARRANTY

An Inside Look at Heritage Quality Construction



\$44.97 SQ

WEATHER WOOD RUSTIC CEDAR SLAYESTONE GRAY RUSTIC BLACK RUSTIC RED WOOD

The Heritage 30 AR shingles are an elegant choice in TAMKO's Heritage line of premium asphalt architectural shingles. They are designed to give you the rugged beauty of wood shingle shingles without the high cost or difficulty.

The Heritage 30 AR shingles are the highest quality laminated shingles available in their class.

Backed by a 30-year limited warranty, 5-year full start, limited transferability, a 10-year limited labor and material warranty, and a 10-month limited warranty against damage from wind up to 75 mph.

ELITE GLASS-SEAL AR 3-TAB SHINGLES 25 YEAR WARRANTY

\$33.87 SQ

\$11.29 BUNDLE X 3 BUNDLE EQUALS A SQUARE

RUSTIC BLACK TKEGARRB

These high-quality, relief 3-tab shingles will give you years of maintenance-free protection with style. Featuring durable fiberglass construction designed to protect roofs from discoloration in areas of high humidity, these popular shingles provide economical, reliable roofing protection as well as fire and wind resistance.



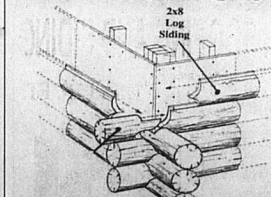
NORANDEX/REYNOLDS DISTRIBUTION CO.

DOUBLE 4.5 DUTCH LAP IN STOCK COLORS ONLY

ITEM #	SIZE	R-FACTOR	SQ.FT.	SALE PRICE
FGIR1187R	3-1/2"x18"	R11	88.12	\$18.94
FGIR1187NR	3-1/2"x18"	R11	88	\$18.94
FGIR1187FR	3-1/2"x18"	R11	88.12	\$18.94
FGIR1187BR	3-1/2"x18"	R11	88.12	\$29.06
FGIR1187GR	3-1/2"x18"	R12	88.12	\$24.55
FGIR1187OR	3-1/2"x18"	R10	48.88	\$16.00
FGIR1187PR	3-1/2"x18"	R10	28	\$9.93
FGIR1187DR	3-1/2"x18"	R10	48.88	\$16.00
FGIR1187FR	3-1/2"x18"	R10	78.87	\$24.46
FGIR1187BR	3-1/2"x18"	R10	82.33	\$27.22
FGIR1187GR	3-1/2"x18"	R10	88	\$41.94

\$43.89 per sq.
\$3.99 per pc.

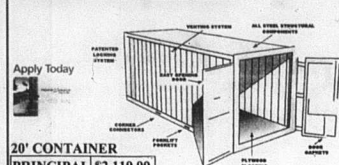
LOG CABIN SIDING



The rustic beauty and comfort of a log cabin is now available for homes with conventional wall construction. Graham offers the best of both past and present through its log cabin siding. The shipping designed log cabin siding allows the builder to select his insulating materials as well as the thickness of the walls.

2X8 #1 SYP	8'	10'	12'	14'	16'
	\$7.12	\$8.91	\$10.69	\$12.47	\$14.25

CARGO CONTAINERS



Apply Today

20' CONTAINER	PRINCIPAL \$2,119.99
RATE	9.99%
# PAYMENTS	36
PAYMENT	\$68.40

THE MONTHLY PAYMENTS FIGURED HERE ARE BASES ON THE CONTAINER PRICE AND 6% KY. SALES TAX.

40' CONTAINER	PRINCIPAL \$2,649.99
RATE	9.99%
# PAYMENTS	36
PAYMENT	\$85.50

ADDITIONAL DELIVERY FEE MAY APPLY. VALID ON PURCHASES MADE ON A HOME SOURCE CREDIT CARD DECISION IS MADE WITHIN MINUTES.

CARGO CONTAINER	LENGTH	HEIGHT	WIDTH	DOOR
20'	5,815 LBS	19'10 1/2"	7'8"	7'8 1/2" x 5'8"
40'	8,377 LBS	40'0 1/2"	7'8"	7'8 1/2" x 5'8"

CONTAINERS ARE WIND AND WATER TIGHT WITH GOOD FUNCTIONAL LOCKING DOORS.



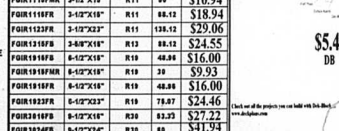
Blow-It Yourself

You can insulate your home and save money. Cellulose. Your best insulating value. Free use of Blowin machine w/purchase of 20 bags

SAVING AMERICA ENERGY * FIBERGLASS INSULATION * GARDNER'S

ITEM #	SIZE	R-FACTOR	SQ.FT.	SALE PRICE
FGIR1187R	3-1/2"x18"	R11	88.12	\$18.94
FGIR1187NR	3-1/2"x18"	R11	88	\$18.94
FGIR1187FR	3-1/2"x18"	R11	88.12	\$18.94
FGIR1187BR	3-1/2"x18"	R11	88.12	\$29.06
FGIR1187GR	3-1/2"x18"	R12	88.12	\$24.55
FGIR1187OR	3-1/2"x18"	R10	48.88	\$16.00
FGIR1187PR	3-1/2"x18"	R10	28	\$9.93
FGIR1187DR	3-1/2"x18"	R10	48.88	\$16.00
FGIR1187FR	3-1/2"x18"	R10	78.87	\$24.46
FGIR1187BR	3-1/2"x18"	R10	82.33	\$27.22
FGIR1187GR	3-1/2"x18"	R10	88	\$41.94

Deck System DEK-BLOCK



\$5.49 DB

ROUND COLUMNS SQUARE COLUMNS

6X8 \$89.99	8X8 \$98.16	8X8 \$98.00	8X10 \$114.99
8X8 \$90.14	8X8 \$126.94		

Gardner Asphalt Driveway Sealer \$8.99 5 GAL

1/2" X 20'

	1 TON	2 TON	4 TON	6 TON	10 TON	\$5.39 SINGLE PIECE
\$/PER PC	\$ 5.29	\$ 5.19	\$ 5.09	\$ 4.99	\$ 4.89	
\$/TON	\$ 783.50	\$ 778.50	\$ 763.50	\$ 748.50	\$ 733.50	
150 PCS 20' REBAR PER TON						