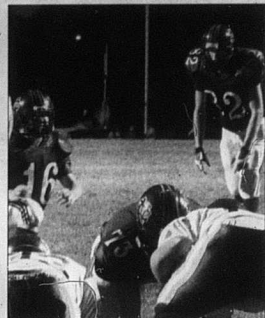


Homecoming 2007



Photos by Hank Bond and Dustin Robinson



NCHS Homecoming Queen and King Kayla Mitchell and Jonathan Mattox

Homecoming happiness

Left, the sophomore class of NCHS won the spirit cup for this year's event. Above, Ben Layne looks to kick from the hold of Zach Lemons, while Jonathan Tobin prepares to block. NCHS downed Bourbon Co., 33-12.

NCHS Senior Volleyball Profiles



Ashley Bromagen

Ashley is the 17-year-old daughter of Jackie and Beth Bromagen. She is involved in many activities, including softball (5 years), volleyball (4 years), varsity volleyball co-captain, FFA (4 years), FBLA (3 years), Student Council, Drug Coalition, Principals' Club, National Honor Society, National Honor Roll, Youth Salute, and Who's Who Among American High School Students. In her spare time, she likes to hang out with friends, watch movies, play softball, go shopping, talk on the phone and spend



Brittany Crabtree

Brittany is the daughter of Charrie and David Crabtree. She is the varsity Co-Captain of the Volleyball team, a member of the Y.E.S.S. Drug Coalition, Pep Club, and Youth Salute. She was a member of student council for two years, swing choir for two years, and a two-year member of the Indiana High School Rodeo Association. Brittany is a nine-year member of 4-H and plans to attend EKU with a major in physical therapy.

Say "hello" to your new Kubota dealer.

There's a new authorized Kubota dealer in town. That means you have someone you can trust to provide innovative tractors, mowers and utility vehicles. All backed by factory-trained service technicians and genuine quality Kubota parts.

Sauer Implement
3742 Maysville Rd.
Flemingsburg, KY 41041
www.sauerimplement.com
(office) 606-849-4853 • (cell) 606-782-9006

www.kubota.com

DIRT CHEAP PRICES



HOG WILD SALE
We've Done It Again!

CUSTOMER APPRECIATION DAY

LUNCH WILL BE SERVED AT NOON

SATURDAY OCTOBER 20TH

Mark your calendars! Come on over and take advantage of even lower prices. And get Woody by your lunch!

Special for Home

2X4	8	10	12	14	16	18	20
#2 SFF	\$ 2.18	\$ 2.58	\$ 3.18	\$ 3.58	\$ 4.29	\$ 4.68	\$ 5.18
#2 SO. YELLOW PINE	\$ 1.88	\$ 2.38	\$ 2.88	\$ 3.38	\$ 3.99	\$ 4.49	\$ 4.99
TREATED	\$ 2.95	\$ 3.75	\$ 4.55	\$ 5.35	\$ 6.15	\$ 6.95	\$ 7.75
2X6	8	10	12	14	16	18	20
#2 SFF	\$ 3.45	\$ 4.25	\$ 5.05	\$ 5.85	\$ 6.75	\$ 7.55	\$ 8.45
#2 SO. YELLOW PINE	\$ 2.95	\$ 3.65	\$ 4.35	\$ 5.05	\$ 5.75	\$ 6.45	\$ 7.15
TREATED	\$ 4.45	\$ 5.55	\$ 6.65	\$ 7.75	\$ 8.85	\$ 9.95	\$ 11.05
TREATED 1&G	\$ 4.95	\$ 5.85	\$ 6.75	\$ 7.65	\$ 8.55	\$ 9.45	\$ 10.35
2X8	8	10	12	14	16	18	20
#2 SFF	\$ 3.85	\$ 4.65	\$ 5.45	\$ 6.25	\$ 7.15	\$ 7.95	\$ 8.75
#2 SO. YELLOW PINE	\$ 3.25	\$ 4.05	\$ 4.85	\$ 5.65	\$ 6.45	\$ 7.25	\$ 8.05
TREATED	\$ 5.25	\$ 6.45	\$ 7.65	\$ 8.85	\$ 10.05	\$ 11.25	\$ 12.45
2X10	8	10	12	14	16	18	20
#2 SFF	\$ 5.15	\$ 5.95	\$ 6.75	\$ 7.55	\$ 8.35	\$ 9.15	\$ 9.95
#2 SO. YELLOW PINE	\$ 4.55	\$ 5.35	\$ 6.15	\$ 6.95	\$ 7.75	\$ 8.55	\$ 9.35
TREATED	\$ 7.45	\$ 8.65	\$ 9.85	\$ 11.05	\$ 12.25	\$ 13.45	\$ 14.65
2X12	8	10	12	14	16	18	20
#2 SFF	\$ 6.05	\$ 6.85	\$ 7.65	\$ 8.45	\$ 9.25	\$ 10.05	\$ 10.85
#2 SO. YELLOW PINE	\$ 5.45	\$ 6.25	\$ 7.05	\$ 7.85	\$ 8.65	\$ 9.45	\$ 10.25
TREATED	\$ 12.55	\$ 13.95	\$ 15.35	\$ 16.75	\$ 18.15	\$ 19.55	\$ 20.95
4X4 S4S TREATED	\$ 2.25	\$ 2.75	\$ 3.25	\$ 3.75	\$ 4.25	\$ 4.75	\$ 5.25
4X4 S4S TREATED	\$ 2.25	\$ 2.75	\$ 3.25	\$ 3.75	\$ 4.25	\$ 4.75	\$ 5.25
4X4 S4S TREATED	\$ 2.25	\$ 2.75	\$ 3.25	\$ 3.75	\$ 4.25	\$ 4.75	\$ 5.25
4X4 S4S TREATED	\$ 2.25	\$ 2.75	\$ 3.25	\$ 3.75	\$ 4.25	\$ 4.75	\$ 5.25



SIZE	TRIM	GRADE	PRICE
2X4	92 to 96"	ECON	\$ 1.49
2X4	92 5/8"	STUD	\$ 1.99
2X4	104 5/8"	STUD	\$ 2.19
2X6	92 5/8"	STUD	\$ 3.49
2X6	104 5/8"	STUD	\$ 3.89

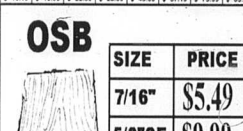


Advantech
FLOORING & SHEATHING
No flooring patch has a better reputation for quality or performance. Advantech Flooring's moisture resistant, durable, strong and stable sheathing is superior in comparison to commodity OSB and plywood.

The flooring guide offers you invaluable tips for efficient construction. Backed by a 90 year tradition of quality Advantech Flooring glues & adhesives that are formulated to meet with the best moisture resistant.

Greater water resistance than 1/2" OSB and plywood.
No sanding or 10 minute cure guaranteed.
Greater resistance to staining, dirt, oil and debris. Superior finish and appearance.
Fastening guide marks for easy installation.

3/4 T & G \$18.99



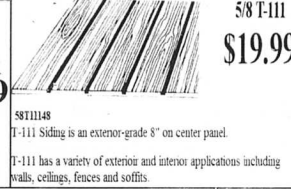
SIZE	PRICE
7/16"	\$5.49
5/8"SE	\$9.99
3/4"TG	\$11.69



BROWN JERSEY GLOVES
6 PACK \$2.19 BJJ6P

8T11148
T-111 Siding is an exterior-grade 5" on center panel.

T-111 has a variety of exterior and interior applications including walls, ceilings, fences and soffits.



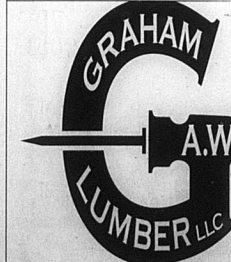
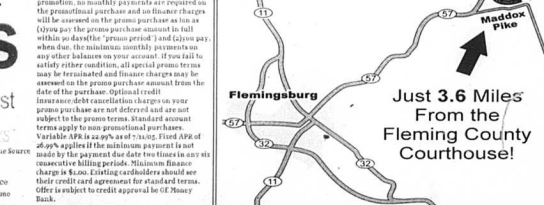
PLYWOOD

SIZE	PRICE
1/2 CDX	\$ 15.29
5/8 CDX	\$ 17.69
3/4 CDX	\$ 21.79
3/4 TG	\$ 24.99

90 Days
No Payments & No Interest

If Paid Within 90 Days*
*valid on purchases made when you use your Home Source Credit Card.

Home Source Financing on Home



SALE START OCTOBER 1 ENDS NOVEMBER 3

A.W. GRAHAM LUMBER, LLC.
MADDOX PIKE FLEMINGSBURG, KY 41041
606-845-9663 OR 1-877-845-9663
"DIRT CHEAP PRICES"

www.grahamlumber.com
MON-FRI 7:00AM TO 5:00PM SAT 8:00AM TO 1:00PM
CLOSED ON SUNDAY

DELIVERY AVAILABLE AT ADDITIONAL COST

WE RESERVE THE RIGHT TO LIMIT QUANTITIES