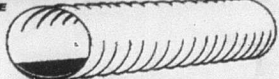


WAGON FLATS W/TREATED DECKS

16' \$429.99
18' \$449.99
20' \$469.99

STEEL GALVINIZED CULVERT PIPE 16 GAUGE

DIAMETER	LENGTH	SALE PRICE
12"	10'	\$65.99
12"	15'	\$97.99
12"	20'	\$133.47
18"	10'	\$96.59
18"	15'	\$122.99
18"	20'	\$176.63
18"	24'	\$211.59
18"	30'	\$264.95
15"	40'	\$352.35
18"	20'	\$235.51
24"	20'	\$281.51
30"	20'	\$351.43
36"	20'	\$422.27
42"	20'	\$549.99
48"	20'	\$619.99



PLASTIC DOUBLE WALL PIPE

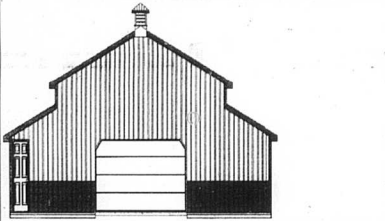
DIAMETER	LENGTH	SALE PRICE
8"	20"	\$78.19
12"	20"	\$121.43
18"	20"	\$144.43
18"	20"	\$229.99
24"	20"	\$334.87

FENCE BOARDS

ITEM#	DESCRIPTION	PRICE
1616HEM	1 X 6 X 16 HEMLOCK	\$5.60
1614OAK	1 X 6 X 14 OAK	\$4.69
1616OAK	1 X 6 X 16 OAK	\$6.49
1616TPFB01	1 X 6 X 16 TREATED POPLAR	\$6.49

CUSTOMIZED POLE BARN PACKAGES

PACKAGES INCLUDES PLANS, 3D VIEW, LAYOUT DRAWING AND A COMPLETE LIST OF MATERIALS.



HEMLOCK BOARDS

	8'	10'	12'	14'	16'
1X2	\$ 1.47	\$ 1.83	\$ 2.20		
1X4	\$ 1.87	\$ 2.33	\$ 2.80	\$ 3.27	\$ 3.73
1X6	\$ 2.80	\$ 3.50	\$ 4.20	\$ 4.90	\$ 5.60
1X8	\$ 3.73	\$ 4.67	\$ 5.60	\$ 6.53	\$ 7.47
1X10	\$ 5.33	\$ 6.67	\$ 8.00	\$ 9.33	\$ 10.66
1X12	\$ 6.40	\$ 8.00	\$ 9.60	\$ 11.20	\$ 12.80

TOP QUALITY, SUITABLE FOR BARN SIDING OR BOARD AND BATTEN RUSTIC HOUSE SIDING

FENCE AND BARN PAINT



Premium asphalt fence paint, great for wood and metal surfaces. Weather proofs. Prevent rot and decay. Stops rust. Termite repellent. Use above and below ground. Long lasting. Black color.

WH445657 BREWER COLE BLACK ASPHALT 5 GAL BUCKET \$23.99

TREATED WOOD FENCE POST



ITEM#	DIAMETER	LENGTH	PRICE
TFP38R	3-1/2" ROUND	8'	\$3.99
TFP48R	4" ROUND	8'	\$5.99
TFP57RS	5-6" ROUND SHARP	7'	\$7.49
TFP57RL	5-6" ROUND BLUNT	7'	\$7.29
TFP58R	5" ROUND	8'	\$8.49
TFP68R	6" ROUND	8'	\$10.79

QUALITY METAL ROOFING AND SIDING

#2 CLASSIC RIB METAL NO WARRANTY \$1.69 LIN. FT.

COLORS AVAILABLE	OCEAN BLUE
BRIGHT WHITE	FOREST GREEN
WHITE	CHARCOAL
LIGHT STONE	BLACK
ASH GRAY	BURGUNDY
MOCHA TAN	HAWAIIAN BLUE
BROWN	TAUPE
RED	BURNISHED SLATE
ZINC GRAY	



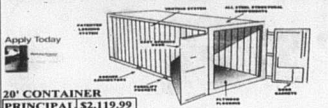
CUSTOM CUT TO THE INCH PLEASE ALLOW 1 WEEK DELIVERY

METAL PAINT

ITEM #	SIZE	COLOR	PRICE
3508991	1GAL	LIGHT STONE	\$ 23.99
0115576	5GAL	LIGHT STONE	\$ 112.99
4763249	1GAL	CLASSIC GREEN	\$ 23.99
7291958	5GAL	CLASSIC GREEN	\$ 112.99
4933248	1GAL	CLASSIC RED	\$ 23.99
3387941	5GAL	CLASSIC RED	\$ 112.99

Use to restore old, weathered metal roofs to a beautiful appearance. Can be used on sloped metal roof on barns and pole buildings. Use as-is for a "Direct to Metal" or use with Valspar metal primer for additional protection and performance.

CARGO CONTAINERS



20' CONTAINER

PRINCIPAL	\$2,119.99
RATE	9.99%
# PAYMENTS	36
PAYMENT	\$68.40

THE MONTHLY PAYMENTS FIGURED HERE ARE BASES ON THE CONTAINER PRICE AND 6% KY. SALES TAX.

ADDITIONAL DELIVERY FEE MAY APPLY.

VALID ON PURCHASES MADE ON A HOME SOURCE CREDIT CARD DECISION IS MADE WITHIN MINUTES.

SIZE	Weight	Interior Length	Interior Width	Interior Height
20'	4,215 LBS	11' 10"	7' 0"	7' 0"
40'	8,437 LBS	23' 0"	7' 0"	7' 0"

ROUND COLUMNS

6X6 \$69.99
6X10 \$98.16
8X8 \$96.60
8X10 \$114.99

SQUARE COLUMNS

6X6 \$ 90.14
8X8 \$26.94



NORANDEX/REYNOLDS DISTRIBUTION CO.

DOUBLE 4.5 DUTCH LAP IN STOCK COLORS ONLY \$43.89 per sq. \$3.99 per pc.

5/8 T-111 \$19.99

T-111 Siding is an exterior-grade 8" on center panel.

T-111 has a variety of exterior and interior applications including walls, ceilings, fences and soffits.

Gardner Asphalt Driveway Sealer \$8.99 5 GAL

A superior coal tar pitch emulsion sealer for asphalt surfaces. Resists gas and oil damage and protects from weathering and freeze-thaw erosion. Dries to a lush satin finish in approximately 4 hours. Five gallons covers 300-375 square feet depending on the surface. Do not use on concrete, flagstone, brick or clay surfaces.

HERITAGE 30 AR SHINGLES 30 YEAR WARRANTY



An Inside Look at Heritage Quality Construction

Single Dimension (Approximate)
Heritage 30 AR 36" SQ x 12" x 5/8" exposure
Heritage 30 AR 36" SQ x 13 1/4" x 5/8" exposure

Heritage 30 AR shingles are an advanced model in TAMKO's Heritage series of premium asphalt architectural shingles. They are designed to give you the rugged beauty of wood shingle without the high cost or hassles. Heritage 30 AR shingles feature Classic Heritage Colors or American's Finest Colors, are UL listed for wind resistance and Class A fire resistance, and come with a 30-year limited warranty.

The traditional grade has a depth of appearance to simulate the dimensional look of wood shingles. Improves the look and value of your home without the high cost of real shingles.

Tough, laminated, double-layer random design. Made with TAMKO's own fiberglass mat, Heritage 30 AR shingles are the highest-quality laminated shingles available in this class.

Ideal for new construction or reroofing.

Backed by a 70-year limited warranty, 5-year full start. Limited transferability, 11-year limited 24-hour labor warranty, and a 40-month limited warranty against hail damage from wind up to 70 mph.

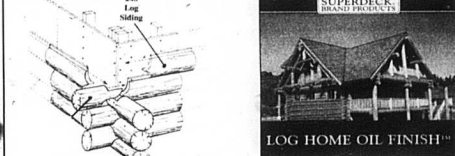
ELITE GLASS-SEAL AR 3-TAB SHINGLES 25 YEAR WARRANTY

\$33.87 SQ \$11.29 BUNDLE X 3 BUNDLE EQUALS A SQUARE

RUSTIC BLACK TREKARD

These high-quality, roller 3-tab shingles will give you years of maintenance-free protection with style. Featuring durable fiberglass construction designed to protect roofs from dislodgement in areas of high humidity, these popular shingles provide economical, reliable roofing protection as well as fire and wind resistance.

LOG CABIN SIDING



The rustic beauty and comfort of a log cabin is now available for homes with conventional wall construction. Graham offers the best of both past and present through its log cabin siding. The shipping designed log cabin siding allows the builder to select his insulating materials as well as the thickness of the walls.

2X8 #1 SYP	8'	10'	12'	14'	16'
	\$7.12	\$8.91	\$10.69	\$12.47	\$14.25

Blow-It Yourself

You can insulate your home and save money. Cellulose. Your best insulating value. Free use of Blow'n machine w/purchase of 20 bags.

ITEM #	SIZE	R-FACTOR	WT.	SALE PRICE
FOURTEENP	3-1/2"x16"	R-11	88.12	\$18.94
FOURTEENR	3-1/2"x16"	R-11	88	\$19.94
FOURTEENL	3-1/2"x16"	R-11	88.12	\$18.94
FOURTEENM	3-1/2"x16"	R-11	88.12	\$24.56
FOURTEENK	3-1/2"x16"	R-11	88.28	\$16.00
FOURTEENJ	3-1/2"x16"	R-11	88	\$9.93
FOURTEENH	3-1/2"x16"	R-11	88.28	\$16.00
FOURTEENG	3-1/2"x16"	R-11	88.28	\$24.46
FOURTEENF	3-1/2"x16"	R-11	88.28	\$27.22
FOURTEENE	3-1/2"x16"	R-11	88	\$41.94

NOTE: WINDOW WIDTH x WINDOW HEIGHT x LIMITED INCHES EXAMPLE: A 20" WIDE x 48" TALL WINDOW x 14 LIMITED INCHES = 1136 IN.

1/2" X 20' REBAR

FULL BUNDLE PRICING	1 TON	2 TON	4 TON	6 TON	10 TON	\$5.39 SINGLE PIECE
\$/PER PC	\$ 5.29	\$ 5.19	\$ 5.09	\$ 4.99	\$ 4.89	
\$/TON	\$ 793.50	\$ 778.50	\$ 763.50	\$ 748.50	\$ 733.50	
150 PCS 20' REBAR PER TON						