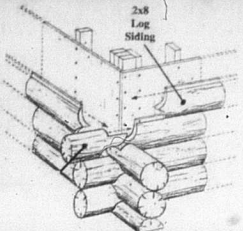


## LOG CABIN SIDING

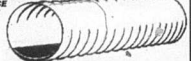


The rustic beauty and comfort of a log cabin is now available for homes with conventional wall construction. Graham offers the best of both past and present through its log cabin siding. The shiplap designed log cabin siding allows the builder to select his insulating materials as well as the thickness of the walls.

2X8 #1 SYP	8'	10'	12'	14'	16'
	\$7.12	\$8.91	\$10.69	\$12.47	\$14.25

### STEEL GALVANIZED CULVERT PIPE 16 GAUGE

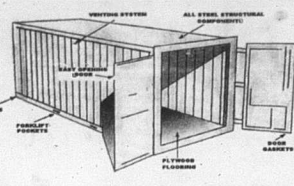
DIAMETER LENGTH SALE PRICE	
12"	\$65.99
12"	\$87.99
12"	\$132.47
15"	\$96.99
15"	\$122.99
15"	\$171.43
18"	\$119.99
18"	\$164.95
18"	\$232.35
24"	\$235.51
24"	\$351.43
24"	\$422.37
42"	\$498.99
48"	\$619.99



### PLASTIC DOUBLE WALL PIPE

DIAMETER LENGTH SALE PRICE	
12"	\$ 532.43
15"	\$ 514.43
18"	\$ 532.99
24"	\$ 534.87

## CARGO CONTAINERS



Apply Today

THE MONTHLY PAYMENTS PROVIDED HERE ARE BASED ON THE CONTAINER FROM OUR 5% RT. MALEY TAX. NO OTHER CHARGES APPLY.

30' CONTAINER	\$2,119.99
PRINCIPAL	0.89%
RATE	0.89%
MONTHLY PAYMENTS	\$50
PAYMENT	\$68.00

SIZE	Weight	Height	Interior Length	Interior Width	Interior Height	Door	Door Weight
10'	5,001 LBS.	7'0"	11'	7'0"	7'0"	7'0"	10" x 8"
20'	10,001 LBS.	8'6"	21'	7'0"	7'0"	7'0"	10" x 8"
40'	13,771 LBS.	10'0"	39'0"	7'0"	7'0"	7'0"	10" x 8"

CONTAINERS ARE BUILT-HIGH WATER TIGHT WITH 4800 PSI FUNCTIONAL LOCKERS BOARDS.

### ROUND COLUMNS

6X6	\$89.99
8X10	\$166.89
8X8	\$98.60
8X10	\$114.99

4X4	\$45.99
6X6	\$90.14
8X8	\$126.94

### COMPOSITE COLUMNS

8X8	\$103.03
8X10	\$140.03

8" COMPOSITE COLUMN CAP/BASE SET \$26.12

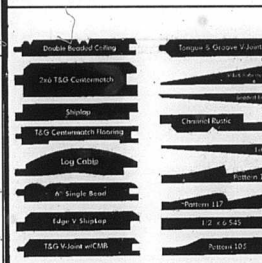
## 1/2" X 20"



	1 TON	2 TON	4 TON	6 TON	10 TON	
\$/PER PC	\$ 5.29	\$ 5.19	\$ 5.09	\$ 4.99	\$ 4.89	\$5.79 SINGLE PIECE
\$/TON	\$ 793.50	\$ 778.50	\$ 763.50	\$ 748.50	\$ 733.50	

150 PCS 20' REBAR PER TON

CHECK OUT OUR SELECTION OF SPECIAL ORDER CEDAR, CYPRESS, PINE AND POPLAR PATTERNS.



### Deck System

#### DEK-BLOCK

36" \$177.55  
6861447  
42" \$211.59  
636990  
48" \$252.99  
9490616

Check out all the projects you can build with DEK-Block at [www.dekblock.com](http://www.dekblock.com)

# ATTENTION FARMERS



### WAGON FLATS W/TREATED DECKS

16'	\$429.99
18'	\$449.99
20'	\$469.99

### TREATED WOOD FENCE POST

ITEM#	DIAMETER	LENGTH	PRICE
TPP38R	3 1/2" ROUND	8'	\$5.99
TPP48R	4" ROUND	8'	\$6.99
TPP57RS	5 1/2" ROUND SHARP	7'	\$7.49
TPP58R	5" ROUND	8'	\$6.49
TPP6R	6" ROUND	8'	\$10.79

### FENCE AND BARN PAINT

Premium asphalt fence paint, great for wood and metal surfaces. Weather proof, pigments and dries. Stops rot. Terminal repellent. Use above and below ground. Long lasting. Black color.

WEATHER RESISTANT BLACK GLOSS \$23.99 PER GALLON

### HEMLOCK BOARDS

	8'	10'	12'	14'	16'
1X2	\$ 1.47	\$ 1.83	\$ 2.20	\$ 2.57	\$ 2.93
1X4	\$ 1.87	\$ 2.33	\$ 2.80	\$ 3.27	\$ 3.73
1X6	\$ 2.80	\$ 3.50	\$ 4.20	\$ 4.90	\$ 5.60
1X8	\$ 3.73	\$ 4.67	\$ 5.60	\$ 6.53	\$ 7.47
1X10	\$ 5.33	\$ 6.67	\$ 8.00	\$ 9.33	\$ 10.66
1X12	\$ 6.40	\$ 8.00	\$ 9.60	\$ 11.20	\$ 12.80

TOP QUALITY, SUITABLE FOR BARN SIDING OR BOARD AND BATTEN RUSTIC HOUSE SIDING

### FENCE BOARDS

ITEM#	DESCRIPTION	PRICE
1616HEM	1 X 6 X 16 HEMLOCK	\$5.60
1614OAK	1 X 6 X 14 OAK	\$4.69
1616OAK	1 X 6 X 16 OAK	\$6.49
1616TPFB01	1 X 6 X 16 TREATED POPLAR	\$6.49



## TAMKO QUALITY METAL ROOFING AND SIDING

30 YEAR DIMENSIONAL SHINGLES \$44.97 SQ

\$14.99 BUNDLE X 3 BUNDLE EQUALS A SQUARE

Weather Wood Rustic RedWood Rustic Cedar Autumn Brown Thunderstorm Gray Rustic Black Slatestone Gray

#2 CLASSIC RIB METAL NO WARRANTY

COLORS AVAILABLE: BRIGHT WHITE, OCEAN BLUE, FOREST GREEN, CHARCOAL, LIGHT STONE, ASH GRAY, MOCHA TAN, BROWN, RED.

\$1.69 LIN. FT.

CUSTOM CUT TO THE JOB PLEASE ALLOW 1 WEEK FOR DELIVERY

### NORANDEX/REYNOLDS DISTRIBUTION CO.

DOUBLE 4.5 DUTCHCLAP IN STOCK COLORS ONLY

APRIL LINEN SILVER  
CLASSIC ALMOND VILLAGE SANDSTONE  
FRENCH CREAM WHITE  
GRANITE GRAY WESTERN SIERRA

\$43.89 per sq.  
\$3.99 per pc.

### VINYL SHUTTERS

15" RAISED PANEL

31"	\$22.43
35"	\$23.57
39"	\$24.72
43"	\$25.87
47"	\$27.02
51"	\$28.17
55"	\$29.32
59"	\$30.47
63"	\$31.62
67"	\$32.77
71"	\$33.92
75"	\$35.07
79"	\$36.22
83"	\$37.37
87"	\$38.52
91"	\$39.67

15" CATHEDRAL OPEN LOUVER

25"	\$14.22
31"	\$16.76
37"	\$19.30
43"	\$21.84
49"	\$24.38
55"	\$26.92
61"	\$29.46
67"	\$32.00
73"	\$34.54
79"	\$37.08
85"	\$39.62
91"	\$42.16

AVAILABLE IN ALL DIFFERENT COLORS

### KINGSTON VINYL PORCH RAILING

3" Square Balusters-White

6 ft. Section Kit top rail, bottom rail, 13 baluster and bracket kit \$78.68

8 ft. Section Kit top rail, bottom rail, 18 balusters and bracket kit \$105.28

10 ft. Section Kit top rail, bottom rail, 23 balusters and bracket kit \$133.59

### TIMBERMILL

WOODGRAIN VINYL SIDING

Rustic Farm for Distinctive Log Cabin

Realistic rustic log cabin look. Maintenance free. No need to stain or paint. Impact resistant. Beautiful, no-fade color and woodgrain finish. Available in 3 natural colors. Improves energy efficiency. Backed by a Limited, Lifetime Transferable Warranty.

15 pieces to a carton a carton covers 96 sq. ft.

\$21.99 PER PIECE SPECIAL ORDER

### Blow-It Yourself

You can insulate your home and save money. Cellulose. Your best insulating value.

Free use of Blowing machine w/purchase of 20 bags

SAVING ENERGY

FIBERGLASS INSULATION

ITEM #	SIZE	R-FACTOR	SQ.FT.	SALE PRICE
FOIR1118FB	3-1/2"x16"	R11	88.12	\$18.94
FOIR1118FMR	3-1/2"x16"	R11	88	\$10.94
FOIR1118FR	3-1/2"x16"	R11	88.12	\$18.94
FOIR1118F	3-1/2"x16"	R11	126.12	\$29.06
FOIR1118FR	3-1/2"x16"	R11	88.12	\$24.55
FOIR1018FB	6-1/2"x16"	R10	48.86	\$16.00
FOIR1018FR	6-1/2"x16"	R10	20	\$9.93
FOIR1018FR	6-1/2"x16"	R10	48.86	\$16.00
FOIR1023FR	6-1/2"x23"	R10	78.87	\$24.46
FOIR2018FR	8-1/2"x16"	R20	83.33	\$27.22
FOIR2024FR	8-1/2"x24"	R20	88	\$41.94

### Gardner's Wet-R-Dri

All Weather Plastic Roof Cement

- \* STOPS ROOF LEAKS
- \* USE FOR REPAIR OR NEW CONSTRUCTION
- \* USE IN WET OR DRY CONDITIONS
- \* FIBER REINFORCED
- \* THICK TROWEL GRADE

W11400130 \$1.49  
W11414573 \$5.99  
W11414565 \$18.99

### ROOF COATING

Our highest quality reflective aluminum coating, formulated to provide the brightest and longest lasting finish with a five year warranty. The high content of aluminum in this product enables it to form a brilliant silver shield to reflect the sun's destructive rays. Cooling costs can be significantly reduced while the underlying roofing materials are protected and preserved. Super Bright serves as a great rust inhibitor and will aid in the prevention of corrosion for metal surfaces. This product also contains interlocking fibers which increase the life and durability of the coating. This premium product has a 5 year warranty and meets Energy Star, UL and ASTM performance ratings.

- \* 65% Reflectance Rating
- \* Approximately 80 sq. ft. per gallon;
- \* 75 sq. ft. per gallon over metal roofing.

\$42.99  
5 GAL

### Gardner Asphalt Driveway Sealer Red Label

\$8.99 5 GAL

A superior coal tar pitch emulsion sealer for asphalt surfaces. Resists gas and oil damage and protects from weathering and freeze-thaw erosion. Dries to a lush satin finish in approximately 4 hours. Five gallons covers 300-375 square feet depending on the surface. Do not use on concrete, flagstone, brick or clay surfaces.

D583GM

### ROOF COATING

A reflective and protective, fibreglass coating with aluminum flakes suspended in a tough and flexible vehicle of selected asphalt and solvent. Upon application, the aluminum flakes lend to the surface to form a reflective metal shield that insulates against the sun's destructive rays, helping to reduce interior temperatures and provide savings on energy costs.

- \* 50% Reflectance Rating
- \* Approximately 50 sq. ft. per gallon
- \* 75 sq. ft. per gallon over metal roofing.

\$32.39  
5 GAL

### ROOF COATING

Sta-Kool #790 Ultra White Silicone Roof Coating is the coolest and highest performing white roof coating available; we guarantee it! This product forms a thick, rubber shield that is modified with silicone resins to provide unbeatable waterproofing protection and adhesion. Sta-Kool #790 also reflects the sun's heat and destructive UV rays to drastically reduce roof temperatures. This results in a reduction of interior temperatures and cooling costs. This product can "pay for itself" which can actually pay for itself in savings on cooling costs.

\$55.59  
5 GAL