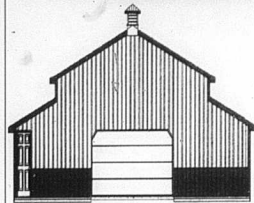
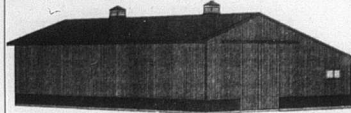


# ATTENTION FARMERS

## CUSTOMIZED POLE BARN PACKAGES

PACKAGES INCLUDES PLANS, 3D VIEW, LAYOUT DRAWING AND A COMPLETE LIST OF MATERIALS.



## QUALITY METAL ROOFING AND SIDING

#2 CLASSIC RIB METAL NO WARRANTY

COLORS AVAILABLE  
BRIGHT WHITE  
LIGHT STONE  
ASH GRAY  
MOCHA TAN  
BROWN  
RED

OCEAN BLUE  
FOREST GREEN  
CHARCOAL  
BLACK

\$1.69 LIN. FT.



CUSTOM CUT TO THE INCH  
PLEASE ALLOW 1 WEEK FOR DELIVERY

## TrackMaster

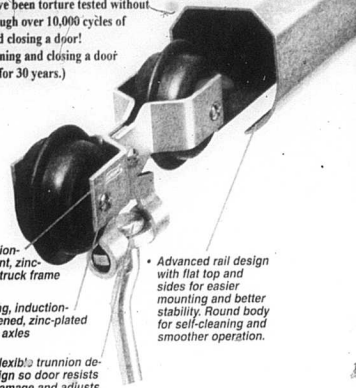
TrackMaster rail and hangers combine the easy mounting and stability of box-rail with the smooth operation of round. The result is a round rail system that is easier to install, easier to operate, self cleaning, and longer lasting. Supporting a 600lb door, TrackMaster hangers have been torture tested without failure through over 10,000 cycles of opening and closing a door! (That's opening and closing a door once a day for 30 years.)

• Corrosion-resistant, zinc-plated truck frame

• Strong, induction-hardened, zinc-plated steel axles

• Flexib's trunnion design so door resists damage and adjusts easier.

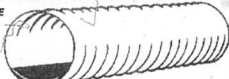
• Advanced rail design with flat top and sides for easier mounting and better stability. Round body for self-cleaning and smoother operation.



## STEEL GALVANIZED CULVERT PIPE 16 GAUGE

DIAMETER LENGTH SALE PRICE

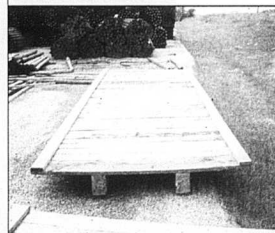
12"	10'	\$65.99
12"	15'	\$97.99
12"	20'	\$132.47
15"	10'	\$96.59
15"	15'	\$122.99
15"	20'	\$176.63
18"	10'	\$211.59
18"	15'	\$264.95
18"	20'	\$352.35
24"	10'	\$235.51
24"	20'	\$281.51
30"	20'	\$351.43
36"	20'	\$422.27
42"	20'	\$489.99
48"	20'	\$619.99



## PLASTIC DOUBLE WALL PIPE

DIAMETER LENGTH SALE PRICE

12"	20'	\$ 521.43
15"	20'	\$ 514.43
18"	20'	\$ 529.99
24"	20'	\$ 533.87



## WAGON FLATS W/TREATED DECKS

16' \$429.99  
18' \$449.99  
20' \$469.99

## TREATED WOOD FENCE POST



ITEM#	DIAMETER	LENGTH	PRICE
TFP38R	3-1/2" ROUND	8'	\$3.99
TFP48R	4" ROUND	8'	\$5.99
TFP57RS	5-6" ROUND SHARP	7'	\$7.49
TFP57R	5-6" ROUND BLUNT	7'	\$7.29
TFP58R	5" ROUND	8'	\$8.49
TFP68R	6" ROUND	8'	\$10.79

## FENCE AND BARN PAINT

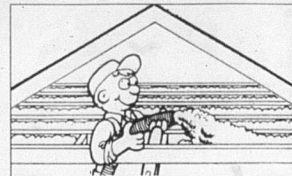


Premium asphalt fence paint, great for wood and metal surfaces. Weather proofs. Prevent rot and decay. Stops rust. Termite repellent. Use above and below ground. Long lasting. Black color.

WB04567 BREWER COTE BLACK ASPHLT 5 GAL BUCKET \$23.99

## FENCE BOARDS

ITEM#	DESCRIPTION	PRICE
1616HEM	1 X 6 X 16 HEMLOCK	\$5.60
1614OAK	1 X 6 X 14 OAK	\$4.69
1616OAK	1 X 6 X 16 OAK	\$6.49
1616TPFB01	1 X 6 X 16 TREATED POPLAR	\$6.49



## Blow-It Yourself

You can insulate your home and save money. Cellulose. Your best insulating value. Free use of Blowin machine w/purchase of 20 bags

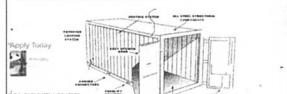


NORANDEX/REYNOLDS DISTRIBUTION CO.

DOUBLE 4.5 DUTCH LAP IN STOCK COLORS ONLY  
APRIL LINEN SILVER  
CLASSIC ALMOND VILLAGE SANDSTONE  
FRENCH CREAM WHITE  
GRANITE GRAY WESTERN SIERRA

\$43.89 per sq.  
\$3.99 per pc.

## CARGO CONTAINERS



SIZE	LENGTH	HEIGHT	WIDTH	DOOR
20'	10'	8'6"	7'6"	10'
40'	20'	8'6"	7'6"	10'

ADDITIONAL DELIVERY FEE MAY APPLY.  
VALID ON PURCHASES MADE ON A HOME SOURCE CREDIT CARD REVISION IS MADE WITHIN MINUTES.

SIZE	LENGTH	HEIGHT	WIDTH	DOOR
20'	10'	8'6"	7'6"	10'
40'	20'	8'6"	7'6"	10'

## CHICKEN OUT OUR SELECTION OF SPECIAL ORDER CEDAR, CYPRESS, PINE AND POPLAR PATTERNS.

ITEM#	DESCRIPTION	PRICE
Double Beaded Ceiling		
7/8" T&O Corner Molding		
Shingles		
T&O Corner Molding		
Log Cabin		
A Single Band		
Edge V Shingles		
T&O Base w/CMC		
Tongue & Groove V-Joint		
Panel Molding		
Chimney Blocks		
End Board		
Pattern 113		
Pattern 117		
1 1/2" x 6" S&S		
Pattern 205		

4X4 Aluminum Columns  
Load Bearing  
Recycled  
Easy to Install  
Resistant to Environmental Applications  
New Construction or Remodeling  
Replaces or Reuses Pinned  
Double Powder Coat Finish

ROUND COLUMNS  
6X6 \$69.99  
6X10 \$98.16  
8X6 \$96.60  
8X10 \$114.99

SQUARE COLUMNS  
6X6 \$ 90.14  
8X8 \$126.94

COMPOSITE COLUMNS  
8X8 \$103.03  
(Does not include cap and base)

8" COMPOSITE COLUMN  
CAP/BASE SET \$26.12

TAMKO  
30 YEAR DIMENSIONAL SHINGLES  
\$44.97 sq  
\$14.99 BUNDLE X 3 BUNDLE EQUALS A SQUARE  
Weather Wood Rustic RedWood Rustic Cedar Autumn Brown  
Thunderstorm Gray Rustic Black Slatestone Gray

1/2" X 20" REBAR  
FULL BUNDLE PRICING

	1 TON	2 TON	4 TON	6 TON	10 TON
\$/PER PC	\$ 5.29	\$ 5.19	\$ 5.09	\$ 4.99	\$ 4.89
\$/TON	\$793.50	\$778.50	\$763.50	\$748.50	\$733.50

150 PCS 20' REBAR PER TON \$5.79 SINGLE PIECE

VINYL SHUTTERS

15" RAISED PANEL	15" CATHEDRAL OPEN LOUVER
31" \$22.43	25" \$14.22
38" \$23.57	31" \$16.76
39" \$25.73	38" \$17.78
43" \$26.87	39" \$19.56
47" \$29.02	43" \$20.32
51" \$30.81	48" \$22.03
55" \$32.52	52" \$23.57
59" \$35.06	56" \$24.95
63" \$38.29	60" \$26.66
67" \$40.54	64" \$29.12
71" \$42.70	67" \$30.81
75" \$43.62	72" \$32.52
80" \$44.40	78" \$33.37
	80" \$34.22

AVAILABLE IN ALL DIFFERENT COLORS

LOG CABIN SIDING  
2x8 Log Siding  
SUPERDECK  
LOG HOME OIL FINISH™

SAVING AMERICA ENERGY  
FIBERGLASS INSULATION  
G-ROOF™

TIMBERMILL  
Rustic Form for Distinctive Living

ITEM #	SIZE	R-FACETION	SQ.FT.	SALE PRICE
FOUR116FR	3-1/2"x16"	R11	16.78	\$18.94
FOUR116FRM	3-1/2"x16"	R11	89	\$10.94
FOUR116FR	3-1/2"x16"	R11	89.12	\$18.94
FOUR123FR	3-1/2"x23"	R11	128.12	\$29.06
FOUR121FR	3-1/2"x21"	R11	89.12	\$24.55
FOUR116FR	3-1/2"x16"	R11	48.84	\$16.00
FOUR116FR	3-1/2"x16"	R10	30	\$9.93
FOUR116FR	3-1/2"x16"	R10	48.84	\$16.00
FOUR123FR	3-1/2"x23"	R10	78.87	\$24.46
FOUR116FR	3-1/2"x16"	R10	83.33	\$27.23
FOUR116FR	3-1/2"x16"	R10	90	\$41.94

\$21.99 PER PIECE SPECIAL ORDER  
15 pieces in a carton  
a carton covers 70 sq. ft.