

OCT
11
2001

Viewpoint
STEPHANIE DAVIS
"Don't let fear keep you from flying"
Page 4

Community
Saltwell news
Page 3

Viewpoint
Head of the Holler
Page 4

The Carlisle Mercury

"Proud to be serving Nicholas County since 1867"

50¢
Thursday, October 11, 2001
Vol. 156, No. 41

Man charged in wife's death

Staff Report

A 27-year-old Elliott County man has been charged with murder following the shooting of his wife in their rural home, according to police.

Susan Easterling, 27, was found dead from a gunshot wound to the head by officers at the scene, police said.

Robert Easterling was charged with murder and was being held in the Rowan County Detention Center. Easterling was also charged with possession of marijuana, police said.

No motive for the crime has been determined, investigators said.



Across

Nicholas County

Free higher ed guide for seniors available

The 2001-2002 edition of "Getting In," a free guide to postsecondary education in Kentucky, is now being sent to guidance counselors for distribution to all high school seniors.

The booklet is published by the Kentucky Higher Education Assistance Authority and is available online at www.khea.com, as well. It offers information on financial aid.

For more information, call 1-800-928-8926.

Assistance for adults returning to school online

Adults interested in returning to school have an online guide to help them plan and pay for college or technical training. The 2001-2002 edition of Adults Returning to School can be accessed at www.khea.com, the website of Kentucky's Higher Education Assistance Authority.

It is the state agency that administers grants, scholarships, work-study, savings, federal family education loans and related information for Kentucky students.

For more information about programs and services, write to the Kentucky Higher Education Assistance Authority, 1050 U.S. Highway 127 S., Frankfort, KY, 40601-4323 or call 1-800-928-8926, extension 7381.

David Reddick



Capacity issue crowds Kentucky roads

Remember the scene from the movie "Jaws," when the sheriff first confronted the denizen from the deep? His comment was "We're going to need a bigger boat."

The concern was capacity—whether the ship was going to be large enough to handle the monstrous fish when and if it were ever landed.

Right now, Kentucky is facing its own issue in terms of highway capacity.

"The good news is that many parts of Kentucky have been growing as a result of new jobs and a robust economy in the last 10 years," said Dan Blake, executive director of the Plantmix Asphalt Industry of Kentucky (PAIKY). "The bad news is that our highway capacity is not keeping pace with the growth."

To illustrate, Blake points to the recently completed U.S. Census, which shows that many of the state's fastest growing counties did not have corresponding growth in highway infrastructure.

For example, among the 31 fastest growing counties in the state, 15 had no new construction or line additions at all during the past 10 years.

"We're not keeping pace on the construction side because the state's resources simply aren't available," Blake said. "The Kentucky Transportation Cabinet has increased lanes on the interstate system, and it does an outstanding job of maintaining existing roads, but we—as a state—must commit ourselves toward highway expansion. It's a capacity issue, but it's also a safety issue."

According to a recent national survey, only 37 percent of motorists called for construction of new highways. Yet traffic congestion is frequently mentioned as the most serious problem for an increasingly large number of commuters—large and small.

"Traffic congestion, and associated problems, including safety issues, is usually thought to be unique to metropolitan areas," Blake said. "But as suburbs and other commerce centers grow, the ability to meet the needs and demands of motorists becomes more and more difficult."

Spencer County, which is the fastest growing county in Kentucky, added 1,865 households during the past 10 years. Based on averages, frequently mentioned as the most serious problem for an increasingly

Distinguished Alumnus



James Clark Lowe, right, of Carlisle has been named this year's University of Kentucky College of Agriculture Distinguished Alumnus from the Bluegrass area. He is the operator of 300 plus acres in Nicholas County. Leadership services include Farm Bureau, Whitaker Bank, Harrison Rural Electric, Carlisle United Methodist Church, Southern States and Gideon International. In 1949, he was in charge of his local soil test laboratory and later served on the local extension council, agriculture extension council and fair board. He and his wife, Marie have one child, Cheryl.

Nicholas Co. hospital gets federal grant

The U.S. Department of Agriculture has announced the selection of 45 Distance Learning and Telemedicine (DLT) grants totaling \$11.4 million, providing greater educational opportunities and medical services to rural citizens in 26 states.

"The grants announced today underscore our commitment at USDA to work with communities to develop and improve access to rural health care and education," said Agriculture Secretary Ann M. Veneman.

In total, 22 distance education grants (\$5.1 million) and 23 telemedicine grants (\$6.3 million) were selected for funding. The education projects will help 306 schools.

Fallen leaves fuel wildfires

This spring and summer, wildfires have again devastated hundreds of thousands of acres of forests nationwide. Luckily for Kentucky, adequate rainfall this summer has prevented the extreme dry conditions that often contribute to wildfires.

Although wildfires haven't been a serious problem for Kentucky this year, the fall is typically when Kentucky experiences an increase in wildfires, especially after the leaves have fallen, creating additional fuels on the forest floor.

"Warm, dry days are already increasing the

Jackets bring 5-2 season record into Homecoming

By DENVER BROWN
Sports Editor

The Nicholas County football Blue Jackets have been gaining momentum on the field in recent weeks. Back-to-back wins on the road brings head coach Greg Letcher's team back home to Carlisle on a high note - and just in time for homecoming.

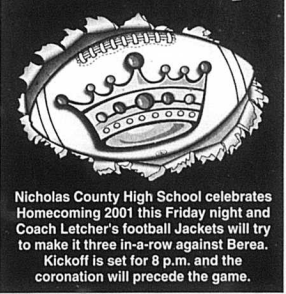
Nicholas County High School celebrates Homecoming 2001 this Friday night and Letcher's football Jackets will try to make it three in-a-row against Berea. Kickoff is set for 8 p.m., and the coronation will precede the game.

"They're a decent team



Sophomore running back Doug Hall battles for yardage during Nicholas County's 41-17 win over Fairview last week.

Homecoming 2001



Weather
See the new five-day forecast on page 2!

Obituaries
Page 3

Inside
8 Pages
Classifieds.....6
On The Record.....7

How to reach us
Phone: 606-784-4116
Fax: 606-784-7337
Mail: 722 W. First Street, Morehead, KY 40351