

Calendar of Events
If you have an announcement about an upcoming event please let us know....

Irvingville Church
The Irvingville Baptist Church would like to invite all to our services to hear the preaching of God's word. We are fundamental in our doctrine and in our worship, we preach the Bible like it is to people like they are...

Conservation District meeting
The Nicholas County Conservation District Board of supervisors will meet on Wednesday, December 6, 2000 at 7:00 p.m. at the old armory in Carlisle.

M'burg Christmas Parade set
The annual Christmas Parade in downtown Millersburg will be held on Monday, December 4, 2000 p.m.

Victorian's Rep to be at courthouse
A Victorian's Benefits Field Representative with the Kentucky Department of Veterans Affairs will be at the Nicholas County Court House in Carlisle, Kentucky on the 3rd Wednesday of each month. Veterans and their families will be given counseling in filing for State and Federal Veterans Benefits. The hours are from 1 p.m. until 3 p.m.

City Council to meet
The Carlisle City Council will have its next regular monthly meeting on Monday, December 11, at 7:00 p.m. in the city building.

Fiscal Court to meet
The Nicholas County Fiscal Court will have its next regular monthly meeting on Tuesday, December 12, at 4:00 p.m. in the courthouse.

Center accepts coats
The Nicholas County Family Resource and Youth Services Center will have its monthly Nicholas County Migrant Program, is accepting winter coats for the Community Coat Closet. Coats may be purchased through the Nicholas County located at 105 School Drive, Carlisle (second to last trailer beside the elementary school). Coats in good, clean condition of all sizes are needed.

High School Site Base to meet
The Nicholas County High School Site Based Decision Making Council will have its next regular monthly meeting on Wednesday, December 20 at 6:00 p.m. in the council room.

Senior Center to hold chili dinner
The Nicholas County Senior Citizens Center will have a chili dinner on Saturday, December 2, from 11 a.m. until 7:00 p.m. There will be baked goods and crafts sold throughout the day.

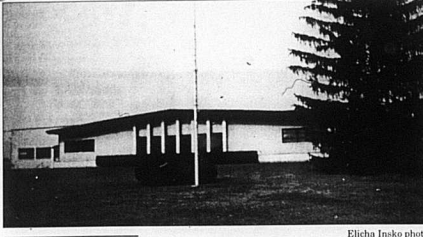
VFW Auxiliary #8666 to meet
The VFW Auxiliary #8666, Carlisle will hold its meeting the third Tuesday of each month at 6:30 p.m.

PARADE from front

Holly Bussell is the 18 year old daughter of Junior Plank and Doris Bussell. She is a member of the NCHS marching band, NCHS cheerleading squad, NCHS Who's Who Among American High School Students, and she is a member of the girls track team and pep club. Summer Ring is the 17 year old daughter of Tony and Patricia Ring. She is also a previous member of the drama club and pep club. She is a member of the princesses for the principals club, member of parade include Kristian FFA, a previous member of the Nicholas County Junior High, Hannah Soltman and pep club. Dana Plank is the 17 year old daughter of Junior Plank and Doris Bussell. She is a member of the NCHS cheerleading squad, NCHS Who's Who Among American High School Students, and she is a member of the girls track team and pep club. Summer Ring is the 17 year old daughter of Tony and Patricia Ring. She is also a previous member of the drama club and pep club. She is a member of the princesses for the principals club, member of parade include Kristian FFA, a previous member of the Nicholas County Junior High, Hannah Soltman and pep club. Dana Plank is the 17 year old daughter of Junior Plank and Doris Bussell.

JOCKEY from front

The long-time manufacturing plant in Carlisle will become home to Panel Masters, Inc. in 2001. The company is expected employ up to 60 people initially and then increase to 150 eventually. Panel Masters will purchase the former Jockey plant from the Carlisle-Nicholas County Industrial Authority.



Ericha Insko photo

The Jockey Plant

The long-time manufacturing plant in Carlisle will become home to Panel Masters, Inc. in 2001. The company is expected employ up to 60 people initially and then increase to 150 eventually. Panel Masters will purchase the former Jockey plant from the Carlisle-Nicholas County Industrial Authority.

TOYS from front

This year's drive will be the same as last year. The fire department will not be delivering the toys on Christmas Eve. Toys can be picked up at the fire department on Walnut Street on December 24, from 8 a.m. until noon. The only deliveries made will be for the elderly and baskets and those who are disabled. Anyone who wishes to sign up can call 289-2369 or 289-7226. The Nicholas County Fire Department will like to thank everyone who has supported the drive in the past several years.

PUBLIC NOTICE

Second reading of a proposed ordinance amending the Nicholas County budget for Fiscal Year 2000-2001, to include unanticipated receipts from caregivers, FEMA reimb., excess fees, recycling, truck license, federal grants, in the amount of \$912,405.69 and increasing expenditures in the area of General, Road, Landfill and CDBG funds, will be held on December 12, 2000 at 4:00 P.M. at the Nicholas County Courthouse. A copy of the proposed ordinance with full text is available for public inspection at the Office of the County Judge/Executive during normal business hours.

METAL ROOFING & SIDING

Best Prices • Big Selection • Fast Service
FACTORY DIRECT - CUSTOM CUT From Factory Openings January 2001
Rejects \$19.95 Sg. Galvanized \$21.95 Sg. Galvalume \$24.95 Sg. Painted (15 Colors) \$29.95 \$33.95 Sg.

DAVCO STEEL

1-800-474-4321 Danville, KY

Local students included in Who's Who

A total of 51 students from this area are included in the 34th Annual Edition of Who's Who Among American High School Students, 1999-2000. Who's Who, published by Educational Communications, Inc. Large Forest, Illinois, is the largest recognition program and publication in the nation honoring high achieving, high school students. Students are nominated by high school principals and guidance counselors, national youth groups, churches and educational organizations based upon students' academic achievement and involvement in extracurricular activities. Traditionally, 99% of Who's Who students have a grade point average of 'B' or better and 97% are college bound.

The 34th Annual Edition of Who's Who Among American High School Students, 1999-2000, published in 18 regional volumes, features over 75,000 students or just over the nation's 14,000,000 high school students. It represents approximately 20,000 of the 24,000 public, private and parochial high schools in the country. Who's Who students also compete for \$200,000 in scholarship awards and participate in the publication's Annual Survey of High Achievers, an annual opinion poll of teen attitudes. The book is distributed complimentary basic to up to 15,000 high schools, colleges, universities and public libraries throughout the country. To learn more about...

School Nicholas County News

Week of November 27-December 1, 2000

Elementary School
Monday, November 27 - scrambled eggs, cinnamon toast, cereal, jelly, juice, milk.
Tuesday, November 28 - sausage, biscuit, cereal, jelly, juice, milk.
Wednesday, November 29 - french toast sticks, syrup, cereal, toast, jelly, juice, milk.
Thursday, November 30 - bacon and biscuit, cereal, toast, jelly, juice, milk.
Friday, December 1 - cereal, cinnamon toast, jelly, juice, milk.

High School
Monday, November 27 - chicken nuggets, pizza, french fries, cole slaw, white cake/strawberry fruit, milk.
Tuesday, November 28 - grilled cheese sandwich, toast, corn, fruit, milk.
Wednesday, November 29 - cheeseburger on bun, lettuce/tomato/pickle, french fries, milk, lemonade.
Thursday, November 30 - pizza, corn, tossed salad, fruit, milk.
Friday, December 1 - COOK'S CHOICE.

Lydia Belle Burke 1939-2000

Lydia Belle Burke, 61, of Stony Creek Road, Carlisle, widow of William Dudley Burke Sr., died on Monday, November 27, 2000 at St. Joseph Hospital.

She was born in Montgomery County to the late James T. and Mimmie Vice Davis, was a graduate of the Good Samaritan School of Nursing, was a retired R.N. with Bourbon General Hospital, a member of the First Baptist Church of Carlisle, and was a Kentucky Colonel.

Survivors include two sons, William Dudley "Buddy" (Barbara) Burke, Jr., Paris and Phillip M. Burke, Carlisle; three sisters, Sarah Garrett and Lula Mae Green, Mt. Sterling; and Carrie Hutchinson, Paris; a sister-in-law, Jewell Davis, Carlisle; three grandchildren, Jessica Lynn Burke and Alexis Davis, Grimes, Mayville and William Wesley Burke, Paris; several beloved nieces and nephews. Services were held on Thursday, November 30, 2000 at Mathers-Gaugue Funeral Home, burial in the Longview Cemetery at Bethel. Contributions are suggested to the American Lung Association.

COMMUNALTY OF KENTUCKY NICHOLAS CIRCUIT COURT CASE NO. 00-01-0055

PLAINTIFFS: R.J.K. PARTNERSHIP, GARY STEINBACH and RENAE STEINBACH, his wife. DEFENDANTS: TRACT NO. 1 (LOCAL 3).

By virtue of a Judgment and Order of Sale of the Nicholas Circuit Court entered in the above styled action on November 2, 2000, and to make enough money to satisfy said Judgment then in the sum of \$32,452.00, plus interest thereon of \$8,772.00 until paid, plus costs including costs of sale, and 2000 ad valorem property taxes, as set out in said Judgment, the undersigned, Master Commissioner of said Court, on the 2nd day of December, 2000, at or about the hour of 11:00 a.m. at the Nicholas County Courthouse, Carlisle, Kentucky, after first sale separately to the highest bidder two (2) tracts of land in Nicholas County, Kentucky, and more particularly described as follows:

COMMUNALTY OF KENTUCKY NICHOLAS CIRCUIT COURT CASE NO. 00-01-0055

PLAINTIFFS: PAUL D. PRATT and WILLIAM R. EGER, et al. vs. AUBREY WAYNE FRYMAN and ANNA MAE GILSPIE, et al. DEFENDANTS: DEPOSIT BANK OF CARLISLE.

By virtue of a Default Judgment and Order of Sale of the Nicholas Circuit Court entered in the above styled action on November 16, 2000, and to make enough money to satisfy said Judgment then in the sum of \$7,575.00, plus additional interest, court costs, including costs of sale, unpaid ad valorem property taxes, and prior to the Deposit Bank of Carlisle on the 1st day of December, 2000, at or about 11:00 a.m. at the Nicholas County Courthouse door, in Carlisle, Kentucky, offered for sale (Parcels 1 and 2) to be sold separately to the highest and best bidder, that property in Nicholas County, Kentucky, and more particularly described as follows:

Two (2) parcels of land lying in Nicholas County, Kentucky, and more particularly described as follows: PARCEL 1: "BEGINNING at a point on the East margin of the Blue Licks and Parks Ferry Turnpike in Mrs. Gillispie line, thence S 47-15 W 15.18 chains to a post, thence S 43 E 2.88 chains, thence N 41 W 30.25 chains to a post in front of Charles Johnson, thence down the hollow N 29-20 E 3.66 chains to a stone between two red oaks, thence N 41-30 E 3.03 chains, thence N 34 E 3.70 chains, thence N 23-45 E 2.10 chains to a small iron nail, to a post corner to Ishmael in Mrs. Jobe Barnes line, thence S 40-45 E 18.27 chains to a post corner to George W. Clay, thence N 47-10 E 20.22 chains to the center of the pike, thence with the center of the pike S 24-15 E 6.16 chains, thence S 29-30 E 4.03 chains to the beginning containing 83.30 acres."

PARCEL 2: "A certain lot or parcel of ground with all improvements thereon, lying on the waters of Licking River, and on the east side of the Parks Ferry and Lower Blue Lick Turnpike Road in Nicholas County, Kentucky, and known as the 'Shrubal School' and bounded as follows: the Heirs of J.E. Berry; thence S 45 12 W 9 poles to a point in the aforesaid Turnpike road in said Heirs line; thence said Turnpike N 31 34 W 11 poles, thence leaving the Turnpike road N 52 E 7.10 poles to a stake corner to said first party's (T.L. Ishmael) other land, thence S 41 E 10 poles to the beginning, containing 1(1/2) one-half acre."

"Being the same property conveyed to Aubrey Wayne Fryman by Anna Mae Gilspie, single, through her Attorney-in-fact, Coleman K. Gilspie, by decedent December 30, 1998, and of record in Deed Book 101, Page 78, of the Nicholas County Clerk's Office."

Said property is subject to legal highways and all easements and restrictions of record and applicable zoning regulations.

Upon the sale of the above described property, the purchase price shall be payable as follows: In cash or with a deposit of twenty (20%) percent of the purchase price with the balance on credit of thirty (30) days. If the purchase price is not paid in full, the successful bidder shall give a bond with good and sufficient surety thereon for the remaining part of the purchase price; said bond to have the same force and effect as a judgment and to be a lien on said property and to bear interest at the rate of twelve (12%) percent per annum from the date of sale until paid, which bond and accrued interest shall be sold at public sale.

Each tract of said property shall be sold as a whole and free and clear of all liens, encumbrances and interests of the parties herein but shall be subject to:

- (a) 2001 and subsequent ad valorem property taxes which shall be paid by the purchaser.
(b) Easements, restrictions and stipulations of record affecting said property, and all governmental laws and regulations affecting same;
(c) Assessments for public improvements levied against the property.
(d) Any state of facts that could be disclosed by an accurate survey or inspection of the property.
(e) Any right of redemption which may exist.

Plaintiff, the Court and the Master Commissioner shall not be deemed to have warranted title to any purchaser. Possession of the property and deed will be delivered to each purchaser upon full payment of the purchase price and confirmation of the sale and approval of the deed by the Court.

Following sale of the above described property, the Master Commissioner shall promptly report same to the Court, and said report shall be held over for a period of ten (10) days for confirmation or exceptions. Any person desiring to object or except to the sale shall do so by that time or be forever barred.

JOSEPH H. CONLEY, Master Commissioner, Nicholas Circuit Court

Renew Your Subscription! Call 289-2464 Today

Grubaker Builders Post & Steel Buildings & Supplies
Metal Roofing For: Agricultural • Residential • Light Commercial/Industrial • Post-Frame Buildings • Backyard Sheds • Retrofit Over Existing Roof • Garages, Porches, Gazebos, Etc.
NEW 10,000 sq. ft. Warehouse To Serve You Better
• Most Trims • Nails • Screws • Cannon Ball Sliding Door Track • Metal Stays Dry
Metal Roofing price starts at \$19.95
We Have Over 200,000 L.N. ft. of roofing in stock
7 miles east of Flemingsburg, KY on 559
1-877-845-8408 or 606-845-8408

\$4900 Your Choice
\$9900 Your Choice
\$14900 Your Choice
\$1499 Your Choice
Diamond Earrings \$4900
Diamond Earrings \$8900
Diamond Earrings \$1299
Diamond Earrings \$2899
Diamond Pendant \$8900
Diamond Pendant \$18900
Diamond Earrings \$18900
Diamond Earrings \$18900

CASKEY'S
2500 US 60 East Morehead, KY 606-784-2782