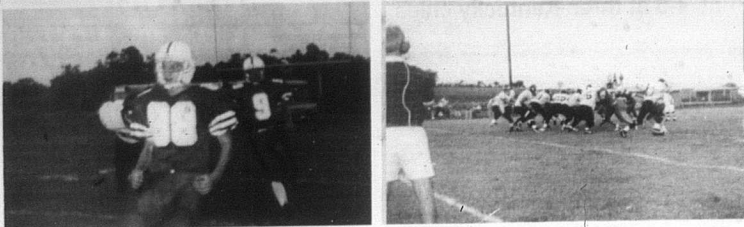


Bluejackets go against Flemingsburg Panthers in first game of the season



John Hamilton, Number 88, and Aaron Snapp, Number 9, were glad to get on the football field

The Bluejackets lost the Flemingsburg Panthers 41 to 6 but the team gave an exciting game nonetheless



Eric Hale, left, NCHS band director, had a great time at the game with his students



NCHS cheerleaders got everybody in the mood for an exciting game last Friday



Barbara Hopkins, left, and Iris Combs, right, NCHS teachers, talked before the Bluejackets took on the Panthers at last Friday's first home game



In Olympic rugby competitions from 1900 to 1924, the only double gold medalist was the United States, which won in 1920 and 1924, defeating France in the final on both occasions



190 AZALEA DRIVE - LAKE CARNICO (Route 499, 35 miles Northeast of Lexington, 20 miles from Maysville, off U.S. 40, near Carlisle)

Like new modified 4 frame on two beautifully wooded Lakefront lots. Rear window wall offers fantastic Lake Views from the family room and left bedroom. Plus, provides access to the rear deck for entertaining. Convenient kitchen with a built-in dishwasher and a large room on the lower level that could be used as a third bedroom. New roof, central heat and air, concrete drive and parking areas, extensive landscaping. Also includes an oversized detached two-car garage with lots of storage.

For additional information, or for private showing, please contact the selling agent. For your convenience, agents will be on site as follows:

OPEN HOUSE: SUNDAY, AUGUST 31, 2 TO 4 PM SUNDAY, SEPTEMBER 7, 2 TO 4 PM Terms: 10% down day of sale, balance due on or before 30 days

MARK MATTOX AUCTIONEER & REAL ESTATE BROKER, INC. 106 E. Main St. Carlisle, KY 606-289-5720

CREDIT? DON'T SWEAT IT! NO CREDIT - BAD CREDIT - Bankruptcy - Repo... RIVER CITY FORD 1-800-367-3420 (304) 529-0099

NOTICE The Nicholas County Fiscal Court is accepting bids for 2 new, 1997 or 1998, 2 1/2 ton dump trucks for the Nicholas County Road Department. Specifications and any additional information can be obtained in the County Judge/Executive's office.

NURSING ASSISTANT POSITIONS AVAILABLE At Robertson County Health Care Facility. Benefit and Certification programs available. All shifts. Starting salary: \$5.35 - \$5.55. TOE. call: 606-724-5020

LEGAL NOTICE In accordance with the provisions of HB4 enacted by the 1979 Kentucky General Assembly a public hearing has been set by the Nicholas County Public Library District Board of Trustees for September 11, 1997 at 1:00 P.M. at the Nicholas County Public Library. The purpose of the hearing is to inform the public that the Nicholas County Public Library District is proposing the 0249 cent tax rate with anticipated revenue of \$35,555.51. This tax rate reflects a 4% increase in anticipated revenue. The tax rate for the preceding year was 0239 cents with revenue of \$32,692.15. The corresponding tax rate is 024 cents with anticipated revenue of \$34,270.37. The expected revenue from new property is \$1,175.20. Increase for the 1997-98 budget year is needed due to the rising costs of books and library materials, computer equipment and building maintenance.

Olsen Health Services is seeking LPN's & RN's interested in providing skilled nursing to a pediatric ventilator dependant client in Nicholas Co., Carlisle 1 night a week. Start immediately! Other positions available include Sitters & HHA's, RN's & LPN's for hourly & home visits. Call today!

2020 Liberty Rd., Suite 115 Lexington KY 40505 1-800-388-9525

Card Of Thanks A thank you to all my family, friends and neighbors for their calls, cards, flowers, prayers and other acts of kindness shown to me during my recent surgery and rehabilitation. I will appreciate your continued prayers and support for my second surgery within the next few weeks. Opal Kelley

The Photo Shoppe Basic Package - \$19.99. A professional photographer will take up to 24 photographs in our studio. You may use any props or clothes changes you prefer. The prints are ready for you in a handsome portfolio the next day. The prints are yours to keep. After you review your prints, additional packages are available. The Photo Shoppe portraits by Redmond. Our Name Says It All! Gateway Plaza, Maysville - Open Mon. - Sat. 8 am - 9 pm, Sun. 12 pm - 6 pm Phone: 606-759-5354 • 1-800-645-4457

WEDNESDAY SEPTEMBER 3. Table with columns for days of the week and months (WSAZ, WOCS, WPCO, WVAH, WOKR, WLEX, WVTY, WTVQ, KET, TBS, ESPN, WGN, USA).

THURSDAY SEPTEMBER 4. Table with columns for days of the week and months (WSAZ, WOCS, WPCO, WVAH, WOKR, WLEX, WVTY, WTVQ, KET, TBS, ESPN, WGN, USA).

FRIDAY SEPTEMBER 5. Table with columns for days of the week and months (WSAZ, WOCS, WPCO, WVAH, WOKR, WLEX, WVTY, WTVQ, KET, TBS, ESPN, WGN, USA).

SATURDAY SEPTEMBER 6. Table with columns for days of the week and months (WSAZ, WOCS, WPCO, WVAH, WOKR, WLEX, WVTY, WTVQ, KET, TBS, ESPN, WGN, USA).

SUNDAY SEPTEMBER 7. Table with columns for days of the week and months (WSAZ, WOCS, WPCO, WVAH, WOKR, WLEX, WVTY, WTVQ, KET, TBS, ESPN, WGN, USA).

MONDAY SEPTEMBER 8. Table with columns for days of the week and months (WSAZ, WOCS, WPCO, WVAH, WOKR, WLEX, WVTY, WTVQ, KET, TBS, ESPN, WGN, USA).

TUESDAY SEPTEMBER 9. Table with columns for days of the week and months (WSAZ, WOCS, WPCO, WVAH, WOKR, WLEX, WVTY, WTVQ, KET, TBS, ESPN, WGN, USA).