

JOCKEY INTERNATIONAL, INC. DSA winners announced



Bassom Sorrell, left, of the Jockey Knitting Plant, with one of the company executives to present Eddie Carter, right, the Distinguished Service Award for 1995 at a ceremony Wednesday, Sept. 27.

Eddie Carter earns DSA at Jockey knitting plant

CARLETON — Eddie Carter was the recipient of the Jockey Distinguished Service Award for the Carle Textile Plant. The DSA is given once a year to a special individual employee, who, through their actions and attitude perpetuate the Jockey ideal. Carter is a member of the Baptist Church in Carleton and enjoys hunting, collecting antiques and gardening. He is a community service oriented and has served on the board of directors of the Historical Society and is a member of the Bicentennial Committee in Nicholas County. Carter is a charter member of the Nicholas County Lion's Club.

Past DSA Recipients Knitting Plant

Wanda Shroust (1983)
Martha Sidles (1984 - retired)
Bud Lyons (1985)
Denny Clark (1986)
James Gaunce (1987 - retired)
Shirley Trussell (1988)
Arthur Buzard (1990)
Henry Feter (1991)
Joyce Booth (1992)

Past DSA Recipients Sewing Plant

Florence Wilson (1983)
Betty Fay (1984)
Judy Hardin (1985)
Clarine Finch (1986)
Danny Vice (1987)
Minnie Rawlings (1988)
Ab Sharp Jr. (1989)
Shirley Roust (1990)
Juanita Scott (1991)
Stella Hill (of Cynthiaiana Plant 1991)
Bill Tolliver (1992)



Jockey's Jim Ford, center, pins Sewing Plant DSA winner Faye Letcher as (from left), Ed Emma Charles Kelley and Gerald Williams, new plant manager, watch.



The Carle Mercurly Leigh Stone Photo Managing Director & Chief Operating Officer, Jockey, Kenosha, Wisconsin, Ed Emma, far left, talked with past Jockey Sewing plant Distinguished Service Award recipients following the awards presentation to Faye Letcher Sept. 27. With Emma are Danny Vice, Bill Tolliver and Shirley Roust.

Faye Letcher receives Sewing Plant Distinguished Service Award

CARLETON — Faye Letcher is the recipient of Jockey International's highest honor, the Distinguished Service Award. An awards presentation was held at the sewing plant Wednesday, Sept. 27.

Ed Emma, managing director and chief operating officer of Jockey International, Kenosha, Wisconsin, introduced Letcher as a dedicated Jockey person, friendly, hard working, a kind, caring person, devoted to family, outstanding member of the community, committed to church and helping others. These are just some of the kind words that have been used to describe the Outstanding qualities and characteristics of this year's recipient of the Jockey Distinguished Service Award recipient at the Carle Sewing Plant.

"This outstanding person lives a lifestyle of caring and sharing and is truly a person that has achieved the Jockey ideal. I am sure you all agree that the recipient of Jockey's highest honor is well deserving of this prestigious award."

"This year's winner has been a very dedicated employee for over 30 years. Today a honoree is a member of the Ruddle Mills Methodist Church where she is song leader. Today's award winner sings gospel songs to the residents of the nursing homes in Flemingsburg and Mt. Olive. This wonderful person also sings her gospel songs on WCTV Radio Station, sharing her faith, love and inspiration with many. With all the lady-likes to help other, it is no wonder someone said she will have the biggest pair of wings in heaven."



The Carle Mercurly Leigh Stone Photo Jim Ford presented a certificate and other awards to Jockey Sewing Plant Distinguished Service Award recipient Faye Letcher.



The Carle Mercurly Leigh Stone Photo Jockey Sewing Factory past Distinguished Service Award winners joined the 1995 winner, Faye Letcher, (top row, left to right) Betty Fay, Linda Williams, Faye Letcher, Shirley Roust and Stella Hill. Standing (l-r): Minnie Rawlings, Danny Vice, Bill Tolliver, Senior Vice President Manufacturing Operations Charles Kelley, Chief Operating Officer, Jockey, (Kenosha) Ed Emma, Ab Sharp, Judy Hardin and Director of Manufacturing Sewing Operations Jim Ford.



Past Distinguished Service Award recipient Betty Fay, left, talked with Jockey executive Ed Emma at the awards ceremony. Fay worked 28 years at the plant and earned the DSA, Jockey's highest honor, in 1984.



The Carle Mercurly Leigh Stone Photo Senior Vice President Manufacturing Operations Charles Kelley, center, holding telephone public address system, presents Letcher with one of several awards as Jim Ford, center, with glasses, director of Manufacturing, Sewing Operations, looks on. At far left, are Ed Emma, managing director & chief operating officer, Kenosha, and new Sewing Plant Manager Gerald Williams.

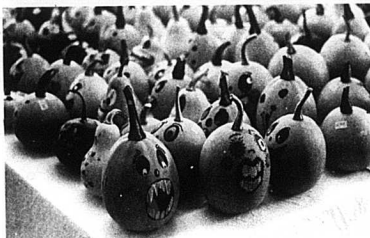
Carlisle crafters enjoy fall boutique



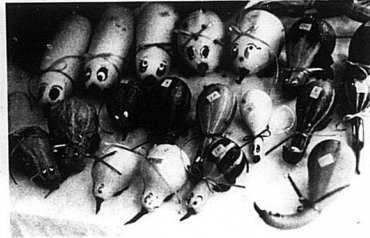
The Carle Mercurly Amanda Meers Photo Several area crafters in Nicholas County participated in the Fall Boutique Christmas Preview. From left are Sondra Fryman, Patsy Cox, Carolyn Bowles, Sandra Laughlin, Pearl Campbell, Cindy Watkins. Not pictured are crafters Janice Cox, Bonnie Hughes, Debbie Myers and Shannon Myers.



The Carle Mercurly Amanda Meers Photo Customers at the Fall Christmas Preview at Sandy Laughlin's home in Nicholas County admired the many craft displays all made by area crafters. Here, they look at unique birdhouses created by Carolyn Bowles.



The Carle Mercurly Amanda Meers Photo Yards of gourds, posing as scary Halloween decorations filled one table at Laughlin's craft display.



The Carle Mercurly Amanda Meers Photo Ducks Galore! Actually, gourds painted as ducks by Sandy Laughlin for her Fall Christmas Preview Craft Show. For more information on available crafts, call Laughlin at 899-5152. All crafts are made locally.



The Carle Mercurly Amanda Meers Photo Wreaths and Raffia angels, hat, baskets, dried flower arrangements and many intricate, beautiful crafts were shown at the Fall Boutique & Christmas Preview held Sept. 29-30 and Oct. 1 on Hickory Ridge.



The Carle Mercurly Amanda Meers Photo Stockings, handpainted Santa's and other Christmas ornaments were a popular display at the Sandy Laughlin craft show last weekend.

Hospital Notes

Nicholas County Hospital
9-20 thru 9-26
ADMISSIONS:
CARLISLE: Betty Tolliver, James Huffield, Edna Carter, Harold Dryden, Christine Hardwick, Geneva Fuller, Clayton Morris, George Card, Annie King, Henry Milton Flora, Winston Fisher, Dora Hammond, Antia Masengale, Ruby Trussell, Brenda Blake, Ludema Foster.
DISCHARGES:
CARLISLE: Harold Dryden, Geneva Fuller, Catherine Heller, Henry Milton Flora, George Card, Clayton Morris, Christine Hardwick, Sally Markwell.
MILLESBURG: Juanita Buckler.
MOOREFIELD: Ann Berry, MILLESBURG: Clarine Brooks, Earl Feback, PARIS: Catherine Caswell.

You felt fine Friday, but that was yesterday.



Where Do You Go Today?
JOHNSON MATHERS CLINIC
101 W. CHESTNUT ST.
Open Saturdays
9:00 am - Noon!!

Call 289-2283 for an appointment

Cynthiana Tobacco Store

156 S. Walnut Street, Cynthiana, KY 41031
234-3377
Winston & Camel . . . \$11.10 +Tax
Doral \$7.60 +Tax
Grand Prix \$6.99 +Tax
Marlboro \$12.80 +Tax
Harley Davidson . . . \$5.00 OFF CANTON
40¢ Off Packs of Newport
Private Stock \$6.99 +Tax
Kodiak & Skoal \$20.00 +Tax
Kodiak \$30¢ OFF CANTON
Copenhagen \$2.20 +Tax
quantities Limited

The Carle Mercurly Amanda Meers Photo Sandra Laughlin dipped samples of bread and butter on vegetables at the Fall Boutique and Christmas Preview held Sept. 29-30 and Oct. 1 at her home at Hickory Ridge Road, Carle.

Johnson Matthers Clinic
Surgeneer General's waiting working center Long Carter, Heath Thomas, King James, and Max Campbell Pregnancy