

The Beautiful Environment

More Than Just a Place To Live, It Has Been Created With The Warm Feeling Of Home.



At the Robertson County Health Care Facility every feature has been carefully planned and designed to put the residents at ease in their new home.

Our objective is to provide both competent and compassionate nursing care.

We develop a resident's care plan, a program that satisfies his or her spiritual, emotional and physical needs. This multi-disciplinary approach to health care has proven to be successful.

Robertson County HEALTH CARE FACILITY

Throughout the Robertson County Health Care Facility our residents will find the interior design aesthetically pleasing. Careful consideration has been given to detail—furniture, lighting, window and wall treatments. Each room, whether private or semi-private, is comfortable and well appointed.



Brock McVey is proud to have supplied the Food Service Equipment for the Robertson County Health Care Facility.

1237 New Circle Road, Lexington, KY 40505



Congratulations to the Robertson County Health Care Facility

Thank You for choosing Ohio Valley Nursery of Aberdeen for the Landscaping Contractor

OHIO VALLEY NURSERY

The True Measure of Our Success Is Innovation.

At Standard Textile, we measure our success by the quality of our service and depth of our capability. We do these things to provide you with the most reliable and innovative products and services that make your business more competitive and cost effective, and afford you the ability to meet your needs and objectives.

STANDARD TEXTILE
"Innovators in health care since 1947"

Congratulations to Robertson County Health Care Facility from

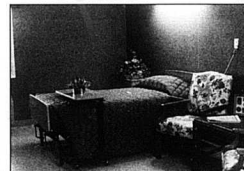
STANDARD Quick PRINT Office Supplies

"The Only Printer and Office Supply You'll Ever Need!"

Bus. Ph. 759-5064 1430 U.S. 68, Mayfield, KY 41206
Bus. Ph. 759-5065 Nationwide: 800-483-6063
Fax: 606-759-5066

This Is Not A Typical Nursing Home

When Your Health Care Needs Suggest A More Monitored And Secure Setting, Life Should Still Be Enjoyable.



The primary mission of the Robertson County Health Care Facility is to provide the highest quality nursing care in a residential setting. 24-hour nursing service by our staff of Registered Nurses (RN) and Licensed Practical Nurses (LPN) is a standard policy.

Additional services available to residents include full pharmacy services, diagnostic and laboratory services, emergency and routine dental services, as well as other individual services requested by either our physician or family.

We pride ourselves in serving well-balanced, delectable dishes from breakfast, lunch, and dinner, to snacks and special parties. A registered dietitian follows sound nutritional guidelines when planning daily meals and special diets.

- Licensed Physical, Speech and Occupational Therapists
- Therapeutic Dietitians/Registered Dietitian
- Social Services
- Private and Semi-private rooms
- Two Day Rooms
- Full Beauty and Barber Shops
- Individual Heating and Air Conditioning
- Activities Hall
- Telephone Service Available in Each Room

Congratulations & Best Wishes
— from —

SWORD CONTRACT INTERIORS
COMMERCIAL & RESIDENTIAL INTERIOR DESIGN
"Healthy Care Design With The Restless Eye!"

AMY A. SWORD (606) 527-6607 575 Lost Fock Rd.
PRESIDENT RICHBOROUGH, KY 40475

Congratulations Robertson County Health Care Facility

UniMac

REM COMPANY - LAUNDRY EQUIPMENT
1-800-292-5070

KINGS FOODSERVICE

Kings Foodservice Proudly Supports
Robertson County Health Care Facility

Congratulations On Your Grand Opening!!

We are pleased to have the opportunity to construct the Robertson County Health Care Facility

BA Best Wishes

Mike Burns President
j. m. burns & associates inc.
COMMERCIAL CONSTRUCTION
(606) 273-2329