

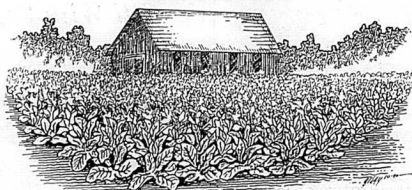
8 - Burley Season 1992



Eating affect.....

Continued from Page 6
 of oxygen radicals in a cigarette smoker is very high." On the other hand, certain vitamins - generally found in fruits and vegetables - theoretically help to remove "oxygen radicals" from the body. "Vitamin A, Beta-carotene, vitamin E, and vitamin C are all free-radical scavengers," Diana said, adding: "In other words, when you take them into your body, they will get these 'bad molecules' and scavenge, or neutralize, them so that they cannot having taken a stable price cut, it has taken this long to work back up to cesses from developing." So U.S. growers will resist any price reductions, McKinney said. Diana termed this "the essential idea" behind the symposium: "If nutritional factors scavenge these free radicals, and if an individual's adding: "But we do have to look at the world marketplace, see that we have stiff take was appropriate, could he avoid membrane damage and disease by competition which wasn't as strong ten years ago, and then just as in the improving his diet!" Repeating caution that symposium findings are preliminary, Diana said, "I think the overwhelming answer to that was, yes."

**Your Neighbor Sold With Lexington Loose Leaf
 Why Don't You?
 Bill Fryman Sells With Lexington Loose Leaf
 Why Don't You?**



Contact
 Brookie George
 289-5268

528 Angliana Ave.
 Lexington, KY
 606-255-7309

Owners:
 Gene Rose
 Robert Allen Rose

Burley Season 1992 — 9



AT A GLANCE

'92 BURLEY QUOTAS

The following quota levels are in million pounds and reflect the most recent figures available from the U.S. Department of Agriculture. Note, however, that due to rounding, the totals may not add correctly.

| STATE | BASIC | EFFECTIVE |
|----------------|-------|-----------|
| Kentucky | 450.4 | 514.6 |
| Tennessee | 120.0 | 187.6 |
| Virginia | 25.4 | 33.8 |
| North Carolina | 23.2 | 38.9 |
| Ohio | 20.8 | 23.9 |
| Indiana | 17.7 | 21.4 |
| Missouri | 6.4 | 7.1 |
| West Virginia | 4.5 | 7.7 |
| Others | .2 | .4 |
| TOTALS | 686.6 | 835.6 |

The BASIC QUOTA is the amount of burley, under a government formula, that American growers can raise.

But each year various conditions — including weather, lack of labor and barn space, as well as rising costs — cause growers either to fall short of, or to surpass, producing the basic quota.

So the USDA annually adds to, or subtracts from, the national basic quota the percentage by which each state's growers exceed, or fall short of, that quota.

And the USDA uses these results to produce a national EFFECTIVE QUOTA for the next growing season.

Thus, the above chart lists preliminary figures for the effective quota but confirmed figures for the basic quota.

The 1992 Burley Season A Special Presentation of **THE CARLISLE MERCURY**

All contents are copyrighted © 1992 by the Burley Tobacco Growers Co-operative Association, Inc., of Lexington, KY. All editorial services and some articles are by GREENE Communications®. All line art is by Straight Line Designs. Both companies are in Cynthiana, KY.

Mt. Sterling Tobacco Warehouse Association
Top Market Prices

First Sale Date November 23, 1992
 Official Weight Date November 10, 1992

To Sell With Us, Call:

| | |
|--|---|
| Grower's Tobacco Warehouse 498-3840 | Clay's Tobacco Warehouse 498-6722 |
| Home Tobacco Warehouse 498-2388 | New Farmers Tobacco Warehouse 498-7311 |

IT PAYS TO SELL WITH US!!

Now offering a \$5.00 per one hundred lb. rebate, increased selling time, two sets of buyers. One of the highest markets in the Burley Belt.

Mt. Sterling Tobacco Warehouse Association