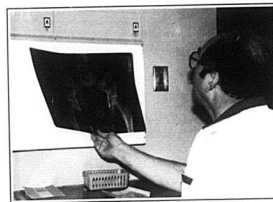


Patient Care

We realize that being hospitalized can be a stressful event. Because of that, we deliver high quality, professional health care while making that care as personal as possible. At Boudwin General Hospital you will find a friendly smile, a helping hand, and a genuine interest in you. Since we are your community hospital, you may know many of the employees who will be directly involved in your care. Being close to home will make visiting by family and friends easier.

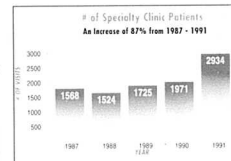
- Highly Trained Nursing Staff
- New Cardiac Monitoring Equipment
- Intensive Coronary Care Service
- In-house diagnostic testing capabilities
- Discharge Planning
- Patient Education
- Cafeteria Service available for visitors



- Social Service Assistance
- Cardiac Catheterization
- Echocardiology
- Outpatient Surgical Services
- Inpatient Surgical Services
- Home Health Referrals
- Nutritional Assessments

For more information on any of our Services or Educational Programs, please call Joe Koch or Michelle Boue at 987-3600.

BGH Specialty Clinic



The Boudwin General Hospital Specialty Clinic opened in August of 1986 in response to the needs of our community. The physicians treating patients at the Specialty Clinic are from the surrounding area. The specialists have scheduled clinic hours at the Specialty Clinic located in our office building on Linville Drive, across from the hospital. The number of area residents who have visited the Specialty Clinic since the opening has increased over the past six years.

You may obtain an appointment with a specialist at the clinic by having your family physician make a referral or by telephoning Boudwin General Hospital at 987-3600 and asking for the Specialty Clinic.

Community Services

Community outreach is an important part of our philosophy. In order to provide resources to the citizens of Boudwin County and the surrounding areas, the hospital provides informational programs that are available to the public. We use a continuous planning process to develop the programs we offer to our patients and the community. These programs are planned to coincide with the needs expressed to us by you, our community. The community outreach programs include the following:

- Local Business Health Fair
- Breast Cancer Support Group
- Community Health Fair
- Stress Management Workshops
- Smoking Cessation Classes
- Cholesterol Classes
- Focus on Fitness
- X-raying cards at Halloween
- Mental Arithmetic Memory Trick Center
- Blood Pressure Screenings
- United Way Party
- Eating Disorder Classes
- Depression Seminars
- Kid's Care Health Fair
- Chronic Pain Management Techniques
- Employee Assistance Programs

