

**MARKET REPORT**

**Farmers Book York, Pa.**  
**Pharmaceutical Kentucky**  
**Monday, June 22, 1992**  
**FEEDS:** FEEDS: CALF SALES: RE-CEPES: THE FEEDS: CALVES: WEIGHED AT TIME OF DELIV-ERY: 817 FEEDS: CALVES: WEIGHED AT TIME OF SALE (COMPARED TO TWO WEEKS AGO): Slaughter cows 2.00-2.30 higher, feeder steers under \$600 currently steady to \$200 lower, under \$500 the steady to firm, feeder heifers steady.

**LAUGHTER COWS:** Medium to Large Frame No. 1, 1,000-1,200 lbs., includes lead 897 lb., 11.00; Small Frame No. 1, 450-550 lbs., 9.50-10.25; Medium and Large Frame No. 2, 600-800 lbs., 7.50-8.50; Large Frame No. 2, 800-1,000 lbs., 6.50-7.50; Medium and Large Frame No. 3, 400-500 lbs., 5.50-6.50; Small Frame No. 3, 200-300 lbs., 4.50-5.50; CATTLE AND CALVE RE-CEPES: 444 TOTAL LITERSKIP: CATTLE WEIGHED AT TIME OF DELIV-ERY (COMPARED TO TWO WEEKS AGO): Slaughter cows 2.00-2.30 higher, feeder steers under \$600 currently steady to \$200 lower, under \$500 the steady to firm, feeder heifers steady.

**LAUGHTER COWS:** Medium to Large Frame No. 1, 1,000-1,200 lbs., includes lead 897 lb., 11.00; Small Frame No. 1, 450-550 lbs., 9.50-10.25; Medium and Large Frame No. 2, 600-800 lbs., 7.50-8.50; Large Frame No. 2, 800-1,000 lbs., 6.50-7.50; Medium and Large Frame No. 3, 400-500 lbs., 5.50-6.50; Small Frame No. 3, 200-300 lbs., 4.50-5.50; CATTLE AND CALVE RE-CEPES: 444 TOTAL LITERSKIP: CATTLE WEIGHED AT TIME OF DELIV-ERY (COMPARED TO TWO WEEKS AGO): Slaughter cows 2.00-2.30 higher, feeder steers under \$600 currently steady to \$200 lower, under \$500 the steady to firm, feeder heifers steady.

**LAUGHTER COWS:** Medium to Large Frame No. 1, 1,000-1,200 lbs., includes lead 897 lb., 11.00; Small Frame No. 1, 450-550 lbs., 9.50-10.25; Medium and Large Frame No. 2, 600-800 lbs., 7.50-8.50; Large Frame No. 2, 800-1,000 lbs., 6.50-7.50; Medium and Large Frame No. 3, 400-500 lbs., 5.50-6.50; Small Frame No. 3, 200-300 lbs., 4.50-5.50; CATTLE AND CALVE RE-CEPES: 444 TOTAL LITERSKIP: CATTLE WEIGHED AT TIME OF DELIV-ERY (COMPARED TO TWO WEEKS AGO): Slaughter cows 2.00-2.30 higher, feeder steers under \$600 currently steady to \$200 lower, under \$500 the steady to firm, feeder heifers steady.

**LAUGHTER COWS:** Medium to Large Frame No. 1, 1,000-1,200 lbs., includes lead 897 lb., 11.00; Small Frame No. 1, 450-550 lbs., 9.50-10.25; Medium and Large Frame No. 2, 600-800 lbs., 7.50-8.50; Large Frame No. 2, 800-1,000 lbs., 6.50-7.50; Medium and Large Frame No. 3, 400-500 lbs., 5.50-6.50; Small Frame No. 3, 200-300 lbs., 4.50-5.50; CATTLE AND CALVE RE-CEPES: 444 TOTAL LITERSKIP: CATTLE WEIGHED AT TIME OF DELIV-ERY (COMPARED TO TWO WEEKS AGO): Slaughter cows 2.00-2.30 higher, feeder steers under \$600 currently steady to \$200 lower, under \$500 the steady to firm, feeder heifers steady.

**LAUGHTER COWS:** Medium to Large Frame No. 1, 1,000-1,200 lbs., includes lead 897 lb., 11.00; Small Frame No. 1, 450-550 lbs., 9.50-10.25; Medium and Large Frame No. 2, 600-800 lbs., 7.50-8.50; Large Frame No. 2, 800-1,000 lbs., 6.50-7.50; Medium and Large Frame No. 3, 400-500 lbs., 5.50-6.50; Small Frame No. 3, 200-300 lbs., 4.50-5.50; CATTLE AND CALVE RE-CEPES: 444 TOTAL LITERSKIP: CATTLE WEIGHED AT TIME OF DELIV-ERY (COMPARED TO TWO WEEKS AGO): Slaughter cows 2.00-2.30 higher, feeder steers under \$600 currently steady to \$200 lower, under \$500 the steady to firm, feeder heifers steady.

**LAUGHTER COWS:** Medium to Large Frame No. 1, 1,000-1,200 lbs., includes lead 897 lb., 11.00; Small Frame No. 1, 450-550 lbs., 9.50-10.25; Medium and Large Frame No. 2, 600-800 lbs., 7.50-8.50; Large Frame No. 2, 800-1,000 lbs., 6.50-7.50; Medium and Large Frame No. 3, 400-500 lbs., 5.50-6.50; Small Frame No. 3, 200-300 lbs., 4.50-5.50; CATTLE AND CALVE RE-CEPES: 444 TOTAL LITERSKIP: CATTLE WEIGHED AT TIME OF DELIV-ERY (COMPARED TO TWO WEEKS AGO): Slaughter cows 2.00-2.30 higher, feeder steers under \$600 currently steady to \$200 lower, under \$500 the steady to firm, feeder heifers steady.

**LAUGHTER COWS:** Medium to Large Frame No. 1, 1,000-1,200 lbs., includes lead 897 lb., 11.00; Small Frame No. 1, 450-550 lbs., 9.50-10.25; Medium and Large Frame No. 2, 600-800 lbs., 7.50-8.50; Large Frame No. 2, 800-1,000 lbs., 6.50-7.50; Medium and Large Frame No. 3, 400-500 lbs., 5.50-6.50; Small Frame No. 3, 200-300 lbs., 4.50-5.50; CATTLE AND CALVE RE-CEPES: 444 TOTAL LITERSKIP: CATTLE WEIGHED AT TIME OF DELIV-ERY (COMPARED TO TWO WEEKS AGO): Slaughter cows 2.00-2.30 higher, feeder steers under \$600 currently steady to \$200 lower, under \$500 the steady to firm, feeder heifers steady.

**LAUGHTER COWS:** Medium to Large Frame No. 1, 1,000-1,200 lbs., includes lead 897 lb., 11.00; Small Frame No. 1, 450-550 lbs., 9.50-10.25; Medium and Large Frame No. 2, 600-800 lbs., 7.50-8.50; Large Frame No. 2, 800-1,000 lbs., 6.50-7.50; Medium and Large Frame No. 3, 400-500 lbs., 5.50-6.50; Small Frame No. 3, 200-300 lbs., 4.50-5.50; CATTLE AND CALVE RE-CEPES: 444 TOTAL LITERSKIP: CATTLE WEIGHED AT TIME OF DELIV-ERY (COMPARED TO TWO WEEKS AGO): Slaughter cows 2.00-2.30 higher, feeder steers under \$600 currently steady to \$200 lower, under \$500 the steady to firm, feeder heifers steady.

**LAUGHTER COWS:** Medium to Large Frame No. 1, 1,000-1,200 lbs., includes lead 897 lb., 11.00; Small Frame No. 1, 450-550 lbs., 9.50-10.25; Medium and Large Frame No. 2, 600-800 lbs., 7.50-8.50; Large Frame No. 2, 800-1,000 lbs., 6.50-7.50; Medium and Large Frame No. 3, 400-500 lbs., 5.50-6.50; Small Frame No. 3, 200-300 lbs., 4.50-5.50; CATTLE AND CALVE RE-CEPES: 444 TOTAL LITERSKIP: CATTLE WEIGHED AT TIME OF DELIV-ERY (COMPARED TO TWO WEEKS AGO): Slaughter cows 2.00-2.30 higher, feeder steers under \$600 currently steady to \$200 lower, under \$500 the steady to firm, feeder heifers steady.

**LAUGHTER COWS:** Medium to Large Frame No. 1, 1,000-1,200 lbs., includes lead 897 lb., 11.00; Small Frame No. 1, 450-550 lbs., 9.50-10.25; Medium and Large Frame No. 2, 600-800 lbs., 7.50-8.50; Large Frame No. 2, 800-1,000 lbs., 6.50-7.50; Medium and Large Frame No. 3, 400-500 lbs., 5.50-6.50; Small Frame No. 3, 200-300 lbs., 4.50-5.50; CATTLE AND CALVE RE-CEPES: 444 TOTAL LITERSKIP: CATTLE WEIGHED AT TIME OF DELIV-ERY (COMPARED TO TWO WEEKS AGO): Slaughter cows 2.00-2.30 higher, feeder steers under \$600 currently steady to \$200 lower, under \$500 the steady to firm, feeder heifers steady.

**Bourbon Drive In**  
 At 9:15 pm. Friday, Saturday & Sunday  
**MEAT DANNY GLOVER**  
**LETHAL WEAPON 3**  
 At 11:21  
**BARSCOUT**

**Independence Day Sale!**  
 Burlington Sox Buy 2 Pair Get 1 Pair FREE!  
 All Shirts 20% Off  
 All Shorts 20% Off  
 All Shoes 20% Off  
 All Slacks 30% Off (charge for alterations)  
 London Fog Jackets 20% Off  
**M. Goldberg's, Inc.**  
 45 S. Main Street - Cynthiana, KY 234-1833

**Judy Drive In**  
 Mayville Rd. Mt. Sterling  
 July 1 - July 9  
 Showtime 9:00  
**The Best Movie of the Summer**

**3 DAYS ONLY!**  
**STOP**  
 Nell's Home Furnishings  
 Wed. July 1, Thurs. July 2, Fri. July 3  
**'Hot Savings for You'**  
 Dining Room Suite \$2195-\$795  
 Bedroom Suite \$179-\$340  
 Broyhill/Catspacer \$150-\$150  
 Swivel/Recliner \$150-\$150  
 90 DAYS SAME AS CASH WITH APPROVED CREDIT  
 Turn Off By-Pass at Spring Street by Dale's Skate & Fun Next to Wegmans - Mt. Sterling

**ALSO JULY 3-4-5**  
**HOOK**

**There Are A Couple Of Ways Your Investment Could Go With A Fifth Third MarketFlex CD.**  
 MarketFlex 5.59% Annual Rate  
 MarketFlex 5.75% Annual Rate  
**FIFTH THIRD BANK**  
 The only bank you've ever need!

**Keeping You In Touch**  
**MERCURY**  
 Call 289-2464

**For 4th of July Prices With A Bang Come To CHROME CRAZY'S BLUEGRASS TOURING SHOWCASE**  
 130 High Street, Paris, KY  
 606-987-4507  
 National Watts # (for orders only) 1-800-282-9889  
 9-5 Mon. - Sat., 1-4 Sun., Closed Wed.  
 Open July 4th-9th

**WE HAVE THE LARGEST INVENTORY OF MOTORCYCLE & TRAILER ACCESSORIES IN THE USA**  
 •Light Bars  
 •Trailers  
 •Side Cars  
 •Leathers  
 •Helmets  
 •Campers  
 •Bike Covers  
 •T-Shirts  
 •Apparel  
 •Trailer Acc.  
**Accessories Now Available For Harley Davidson**  
 We Ship UPS Daily Visa • Mastercard • Discover

**Locations Ready To Serve You**  
 401 Main Street  
 3350 Lexington Rd.  
 Main Street  
 Main & Cheapside  
 Paris, KY  
 Paris, KY  
 Millersburg, KY  
 Lexington, KY  
 987-2910  
 987-7744  
 484-3411  
 259-4999

**Baseball results**

Nicholas County Babe Ruth Friday, June 26: The Angels got away with a victory over the Tigers. Sam Fulton started on the mound for the strike zone. He gave the ball to Mike Bosh in the middle of the first inning. Hitting for the Angels were M. Bosh, D. Calvert, B. Simpson, T. Boston, D. Fulton (2), B. Heller (2), and T. Burns with three.

Shane Kenney and David Tinsler couldn't get their control for the Tigers and Chris Kelley went to the mound in the third inning for the rest of the game. The Tigers got seven hits from J. Massey, R. Mitchell, B. Stone and two each from S. Kenney and C. Kelley. With 11 hits and 18 walks, the Angels won by a score of 15-8.

Saturday, June 27: The first game Saturday ended with a victory for the Dodgers over the Tigers. The Tigers had trouble on the mound as they used James Kenney, Justin Massey, Shane Kenney and Duane Kenney. They got seven hits from J. Massey, C. Kelley, D. Kenney, D. Tinsler, R. Kenney and two from Shane Kenney.

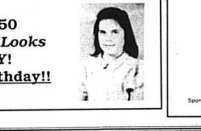
Was Broderick started John Hamilton, Jason Vee, Maron Sims coach, Deater Sims, Amy Everman, Roger Liverpool coach, Nicholas Levine, West Liverpool and Gary Fector coach.

Bradley Burdin also did an excellent job on the mound for the Blue Jays. He allowed eight hits from M. Bosh, J. Slacy, J. Warner, T. Burns and two each from D. Calvert and S. Fulton.

Nicholas County Little League Baseball Tournament June 25: Cubs 13, Astros 5; Yankees 9, Reds 8.

June 26: Eagles 19, Rangers 0; Mets 18, Yankees 0 (Homerun by Clint Tabor, Mets).  
 June 27: Yankees 10, Astros 8; Rangers 20, Reds 3; Eagles 12, Cubs 2; Eagles 18, Mets 4; Rangers 11, Yankees 0; Cubs 7, Mets 6; Rangers 5; Eagles 11, Mets 1.

The second game found the Angels edging out the Blue Jays 12-11. In that story went the distance for the victorious Angels and got the win by striking out 13 Blue Jays and allowing only five hits from B. Bussell, B. Stone, B. Burden, A. Ring, and G. Mitchell.



Nicholas County Little League season champions the Eagles had a 12-0 record and won 4-0 in the tournament. The team is sponsored by Eaglestone Farm. Pictured from left to right, first row, John Earlywine, Junior Earlywine, Josh Ring, Nathan Linville, Micha Mitchell, Kyle Cutler, and Brandon Rector. Second row, Eddie Earlywine coach, John Hamilton, Jason Vee, Maron Sims coach, Deater Sims, Amy Everman, Roger Liverpool coach, Nicholas Levine, West Liverpool and Gary Fector coach.



The Courier-Journal/STC Tom Murphy STAPC Public Affairs KVARING Sgt. 1st Class Jerry W. Highlander, Frankfurt, (left) accepts the Second Army Maintenance Award for light equipment form Major General Robert L. Dearam during award presentations held at the Carlisle Army Gg. Robert S. Tucker commander of Company D 201st Engineer Battalion Kentucky Army National Guard, looks on.

**The Outdoor Drama**  
**Maysville, The Jewel in the Crown of Kentucky**  
 Directed by Anne Parker

**When:** July 2, 3, 4, 5, 6, 7, 8, 9, 10, 11, 12, 13, 14, 15, 16, 17, 18, 19, 20, 21, 22, 23, 24, 25, 26, 27, 28, 29, 30, 31  
**Where:** Down by the Riverside (Lutescence Landing)  
**Tickets:** \$3.00 Adults; Children under 12, \$1.00  
**Patrons:** A Like a Story, Where in the World, Maysville Welcome Center, Mason County Available at: Maysville, The Jewel in the Crown of Kentucky, 1000 Main Street, Maysville, KY 40426  
**Patrons:** A Like a Story, Where in the World, Maysville Welcome Center, Mason County Available at: Maysville, The Jewel in the Crown of Kentucky, 1000 Main Street, Maysville, KY 40426

**Check Out the Savings**  
**SUMMIT Paper Towels Single Roll FREE!**  
 Limit one (1) w/additional \$10 purchase  
 Excluding tobacco products  
 Valid through July 11, 1992  
 at all Ken's Newmarket locations

**Ken's NEWMARKET**  
 Flemingsburg  
 Nicholas  
 Carlisle  
 Paris  
 Harrison  
 Bourbon  
 Cynthiana  
 Paris  
 310 S. Church Street  
 Paris Main Street  
 Flemingsburg The Southridge Plaza

**OPEN 24 HOURS**  
**HOURS A DAY!**

**All your Roads lead to our Savings**  
**Ken's NEWMARKET**