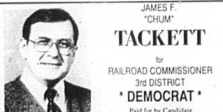




The Carlisle Mercury/William R. Milton Photo
Firemen from the City of Carlisle, Nicholas County, Fama, Millsburg and Bourbon County fought a downtown fire, Sunday, which destroyed Edde's Family Restaurant.

PRIMARY ELECTION MAY 28, 1991
ELECT
Mona Garrett Vice
Nicholas County Clerk
willing to give 110% to the
People of
Nicholas County
Your Vote & Support
Appreciated!

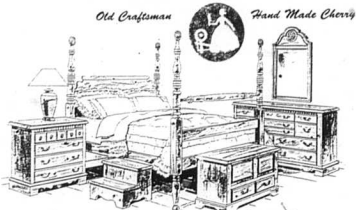
National
Hospital
+ Week
MAY 12-18, 1991



JAMES F. TACKETT
RAILROAD COMMISSIONER
3RD DISTRICT
DEMOCRAT
Poll for by Candidate

Deere Season
SALE!
MAKING THE TRUCKLE MOMENT!
PRICES START AT \$399.
It's 3 MOWERS IN ONE!
✓ A MULCHING MOWER that chews grass into tiny bits and throws them into your lawn as fertilizer.
✓ A REAR BAGGER that picks up grass neatly and quietly with every pass.
✓ A SIDE DISCHARGER that sends clippings out the side faster so you can mow more quickly.
Come in and discover the new John Deere Tractor for your yard.
All other our 20 H.P. 40 H.P. 50 H.P. 60 H.P. 70 H.P. 80 H.P. 90 H.P. 100 H.P. 125 H.P. 150 H.P. 175 H.P. 200 H.P. 225 H.P. 250 H.P. 275 H.P. 300 H.P. 325 H.P. 350 H.P. 375 H.P. 400 H.P. 425 H.P. 450 H.P. 475 H.P. 500 H.P. 525 H.P. 550 H.P. 575 H.P. 600 H.P. 625 H.P. 650 H.P. 675 H.P. 700 H.P. 725 H.P. 750 H.P. 775 H.P. 800 H.P. 825 H.P. 850 H.P. 875 H.P. 900 H.P. 925 H.P. 950 H.P. 975 H.P. 1000 H.P.
Nothing Runs Like a Deere.
R & N Implement
Flemingsburg
RR #2
845-7311

HOMESPUN
Old Craftsman Sale
3 Big Days Only! May 16, 17, & 18
First Time Ever



Invest in the future with quality
Kentucky - made furniture that is built to last!

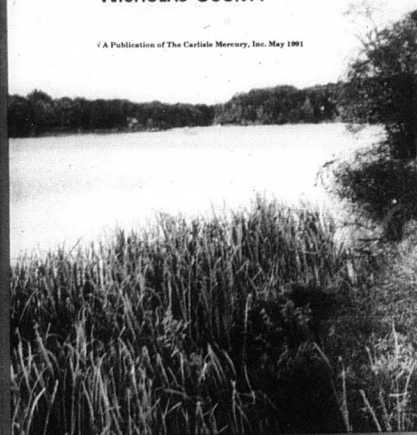
Queen Size Bed \$598	Dresser with Mirror \$598
Chest \$398	Sugar Chest \$338
Nightstand \$118	Corner Cupboard only \$558
Bed Steps \$88	Lingerie Chest \$338
	Blanket Chest \$378

Colliver Furniture
RR 1, Poplar Plains - Ph. 849-6265 Flemingsburg, Kentucky
OPEN - Mon. thru Sat. 9 A.M. to 6 P.M. - Sunday 12:00 to 6 P.M.

✓ Visa ✓ Mastercard ✓ Discover
✓ 90 Days Same As Cash ✓ Financing Available

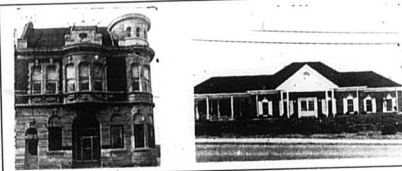
THIS IS
NICHOLAS COUNTY

A Publication of The Carlisle Mercury, Inc. May 1991



Nicholas County Today — 1991 — Page 3

Deposit Bank of Carlisle
"Your Next Door Neighbor"
"Banking On Tommorrow"



Full Serving Banking

- ✓ Ban Club
- ✓ Super Now Accounts
- ✓ Christmas Club
- ✓ Cashier's Checks
- ✓ Installment Loans
- ✓ Money Market
- ✓ Pass Book Savings
- ✓ Travelers' Checks
- ✓ Money Orders
- ✓ Safe Deposit Boxes

✓ Certificates of Deposit
Serving the Community For Over A Century
Your Total Financial Institution
Deposit Bank of Carlisle

Now Serving You With Two Locations
Main Banking Office - 606-289-2205
and West Side Location - 606-289-3400

