

JAN

10

1991

# THE CARLISLE MERCURY

Since 1867 - The only newspaper that really CARES about Nicholas County  
124th Year, No. 2 Carlisle, KY 40311-0272 Thursday, January 10, 1991 50 cents per copy

## Truck overturns burns, one hurt

### Fuel spill prompts EPA, DES involvement at crash

By Hank Bond, The Carlisle Mercury Staff

NICHOLAS COUNTY — A New Year's Day tractor trailer accident on US 68, 6.8 miles east of Carlisle sent one man to the hospital, and created hazards for both Nicholas County firemen and environmental operations.

Ricky D. Pitts, 29, of Enfield, Kentucky was operating a 1983 International Truck, hauling 40,000 to 50,000 pounds of tobacco, registered to Cargo Care Transport Corporation of Rocky Mount, North Carolina, according to Kentucky State Police.

Pitts apparently lost control of the vehicle, at about 11:45 a.m., January 1, it overturned in a curve heading west toward Carlisle, spilling its contents and sending diesel fuel into a stream which feeds Stony Creek. The property is owned by Stanley Frederick.

Pitts was transported to Nicholas County Hospital by Nicholas County Ambulance, where he was treated and released at the hospital's emergency room.

The accident was investigated by Kentucky State Police Trooper William Hurst, with assistance from Trooper Stephen Auvenshine.

The curve, which has been the site of many accidents, and officials of several state and local agencies.

The tractor was completely destroyed by fire, and at one point put several fire fighters in jeopardy when a fire rim exploded sending firemen and bystanders scurrying for cover.

During the accident, the truck's fuel tanks carrying about 200 gallons of fuel ruptured spilling the contents onto the truck's tobacco cargo and into the stream.

According to Gene Kelley, Carlisle and Nicholas County Disaster and Emergency Services Director, as much as 8,000 to 10,000 pounds (or 78 bundles) of the burley was either too damaged by the spill or contaminated by the fuel to be saved.

The remainder of the cargo was off loaded to a second truck which was sent to the scene.

According to reports, the tobacco was being shipped from a Mayeville warehouse to North Carolina.

On site after the accident were representatives of the Kentucky EPA, the State Fire Marshal, Kentucky State Police, the Nicholas County Fire Department, DES officials, Mayor Frankie Hughes, Nicholas County Judge Executive Reese Smoot and several others.

EPA guidelines require that the spill area must be maintained and contained. A city backhoe was brought in and Ed Jefferson worked to dam the stream, along with several others, who laid PVC pipe to divert any fuel from continuing on.

Kelley said workers were on site until 8 p.m. A wrecker was brought in from Aberdeen, Ohio to right the wrecked vehicle.

Persons remained through the night to make certain none of the contaminated tobacco was removed from the scene.

EPA has rules and regulations you must follow," Kelley explained. "On January 2 it was decided to take several cubic feet of contaminated soil (where fuel had fallen). The soil was removed by a Lexington firm and placed in metal containers and stored. Once the level of contamination is determined it will be decided where to take the soil. Landfills are rated by class and this determination will be made after a study is made."

"EPA requires that if a spill is more than 20 gallons all of these precautions must be taken. It's not an over-reaction as far as the EPA is concerned it's precaution."

"One other concern was a 40 foot well which had been dug on site. This will have to be monitored for the next several months to look for possible contamination."

Cost for the clean-up will be absorbed by the trucking firm, Kelley explained.

He also said he was at the scene at least once over a five day period with several other state and local officials, while the clean-up was done.

## Construction to start on 35-mile water extension

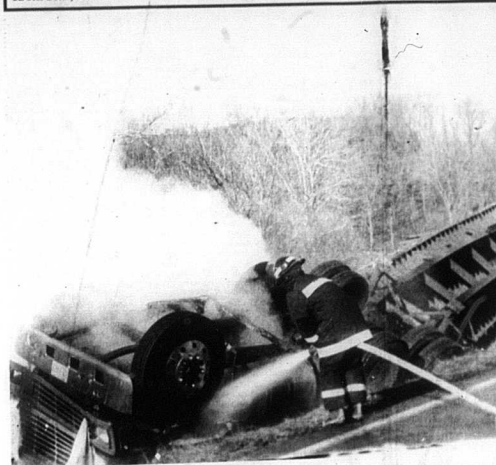
Construction is expected to start next week on 35 miles of waterline extensions in the Bath-Nicholas County area to provide water service to 112 families by the Shاربourge Water District.

Last week signed in the Water District offices in Shاربourge and money was made available through three different agencies.

A total of \$2,700,000 will pay for this large water improvement project. Funding is provided by a \$335,000 loan from the Farmers Home Administration, a \$253,000 grant from FmHA, a \$493,680 Community Development Block Grant, a \$159,000 grant from the Appalachian Regional Commission, local contributions of \$31,000, and \$26,320 from applications for services in the proposed project, and granted increased rates. The seven-month bill will go from \$17.00 to \$22.04 effective Oct. 15, 1990.

In Bath County, the water line remains to go from Reynoldsville down to the fork of 1106 and 1325, going through Mt. Pleasant.

Continued on Page 4



The Carlisle Mercury/William Milton Photo

A 1983 International truck, driven by Ricky D. Pitts, 29, Enfield, KY, overturned on U.S. 68, 6.8 miles east of Carlisle, around 11:50 a.m., January 1. Pitts was taken to Nicholas County Hospital by Nicholas County Ambulance and treated and released. The truck's fuel tanks ruptured spilling diesel fuel into Stony Creek, which empties into the Licking River. Local fire fighters returned to the scene, along with local and state DES officials, the state fire marshal's office and other representatives. See related story.

## Burglars hit two Carlisle businesses

Mercury Staff Report

CARLISLE — Carlisle City Police and the Kentucky State Police are investigating a burglary at Carlisle Cleaners and the American Legion on West Main Street.

According to Carlisle Officer Gary Salter, Jimmie Johnson operator of the cleaners reported the break-in at 8:29 a.m., Monday morning, as he opened for the day.

According to police the break-in occurred at about 11:40 p.m. Sunday night. Police were able to pinpoint the time as the burglars unplugged a clock when attempting to take a television in the dry cleaners.

The intruders gained entry by pushing out a fan and breaking a window in the dry cleaners, police said.

According to Kentucky State Police Trooper Tim Layne, police have evidence to support the theory there was more than one inside the building.

In addition, there was entry gained to the American Legion Hall through the wall from the dry cleaners and then up a stairway. It was also necessary to break through two doors.

Taken was a large quantity of cigarettes and beer, an undetermined amount of cash, two weapons and from the dry cleaners some ceramic items and other small items.

Police were able to identify several sets of fingerprints and have several suspects and definite leads on the case.

The investigation is continuing.



## No sir! No duels!

Top left - Nicholas County Judge Executive Reese Smoot, left, administers the oath of office to appointee Doug Fryman as Nicholas County Clerk. Fryman, who was asked to swear he had not participated in any duels or acted as a second ... is replacing the retiring Rose Scott. The office will be on the May ballot. Below, Fryman administers the oath of office to deputies Carolyn Mathes and Wilma Cleaver.



## Tax collections running ahead

By Sandy Gibbs  
The Carlisle Mercury Staff

CARLISLE — In spite of troubled economic times Nicholas County tax collections are 2 percent better than they were at this time last year.

"It's a little above average," said Nicholas County Sheriff Charles Ring. "Last year we had around 96 percent by January this year we have about 98 percent collected."

Nicholas County Deputy Imogene Green added the re-

sults are a little bit surprising, considering the current bleak economic forecast.

"I think the people wanted to take advantage of the tax discount by getting their taxes in early."