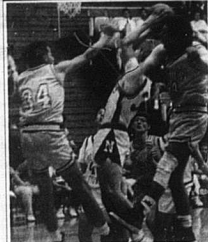
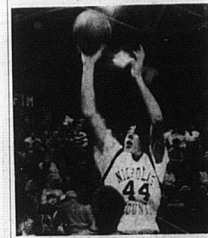


Jackets' season.....



Jamie Simons looks for a basket as the Jackets battle Mayville.



Brian Hlander pulls down a rebound for NCHS.

Continued from Page 15

With 1:31 left in the game, Sims was called for a traveling violation, negating a basket.

The Jackets closed in in the game's final minute. Jarrod Wills drilled a baseline three, and Brown sank a pair of free throws.

Paris found itself with a narrow 57-55 lead.

The Greyhounds tried to set up a stalling offense, but Hlander got a hand on the ball and tipped it to a driving Daniel Brown.

The steal, and the probable basket, were called back by the referee, who contested Hlander stepped on the out of bounds line.

The Greyhounds took the ball back and came away with a layup and a free throw.

The Jackets were faced with a 60-55 deficit with only 30 seconds left in the game.

Nicholas County tried to fire up several three point shots, but the Greyhounds kept up the defensive pressure.

The Jackets resorted to fouls to get another crack at the ball, but the Greyhounds responded with 3-4 shooting from the line.

The Greyhounds held on for the final margin.

Oakley said his team performed well, but let the game slip away at the start of the fourth quarter.

"We did what we wanted to do all night long. We kept their offense off balance, rebounded well, and played our tempo game.

The late run and the (Hlander) call there at the end hurt us."

Daniel Brown led the Jackets with 26 points. Hlander also scored in double figures with 14.

Wills added eight, Sims four, and Simons had three points to close out the scoring.

Congratulations!



**Mathers-Guance
Funeral Home**

**1990 — 1991
Nicholas County
Girls' Basketball
Final Statistics**

Players	ST	Rebs	FGA	FGM	FG%	FTA	FTM	FT%	PTS	PPG	TOS	AST
Hatton	68	117	199	81	39%	134	92	69%	266	10.20	69	124
Smoot	66	60	209	77	37%	214	126	59%	295	11.30	106	126
Earlywine	64	98	260	145	54%	116	82	71%	375	13.90	77	58
Denkins	91	338	300	162	54%	112	63	56%	387	14.30	77	76
Barton	24	69	52	20	38%	47	24	51%	64	2.60	48	51
Schanding	63	20	80	47	59%	45	17	38%	111	4.30	48	50
Linville	20	32	57	27	42%	11	4	36%	58	2.20	29	15
Galbraith	3	8	29	7	24%	13	5	38%	19	1.20	8	3
Simons	14	36	33	13	39%	19	6	32%	32	1.20	22	8
Willoughby	4	9	10	1	20%	6	3	50%	5	0.30	4	2
Sibert	2	8	15	6	38%	10	7	70%	19	1.50	7	8
Johnson	2	7	2	1	50%	0	0	0%	2	0.20	0	0
Fryman	11	15	17	7	40%	4	1	25%	18	1.00	10	7
Team Total	432	811	1317	605	46%	731	430	59%	1651	61.10	505	528
Opp Tot										43.30		