

**SPORTS EXTRA Hawk Bond Photo**  
The Morehead State University Marching Band is a big part of every halftime at MSU football games. The band, more than 250 strong, includes a 11 least one Nicholas Countyan Anna Linville. She is a member of the award winning percussion unit of the band. This year's shows feature Big Band Music from the Court Basie era.

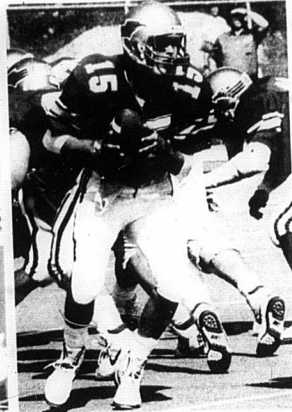


**SPORTS EXTRA Hawk Bond Photo**  
Jill Irvin, left, a senior at Morehead State and a Nicholas County native, was a member of the 1989 Homecoming Court at Morehead last weekend. Tonya Colegrove, sixth from left, was crowned queen during halftime ceremonies.

**M  
S  
U  
  
H  
O  
M  
E  
C  
O  
M  
I  
N  
G  
  
S  
N  
A  
P  
S  
H  
O  
T  
S**



**SPORTS EXTRA Hawk Bond Photo**  
Morehead State runningback Jerome Williams looks for some running room in Saturday's game against Middle Tennessee. Williams finished with a game high 125 yards on 28 carries, but Middle claimed a 24-3 win.



**SPORTS EXTRA Hawk Bond Photo**  
Bath County native Chris Swartz, a junior at Morehead, looks to hand the ball off in the early moments of the game and dropped a 34-3 decision. Swartz, who already holds several regular season passing records for the Eagles, passed for 196 yards on 22 of 35 passing, but failed to produce a touchdown.



**SPORTS EXTRA Hawk Bond Photo**  
Anna Linville (far left) a 1987 Nicholas County High School graduate is a member of the 1989 edition of the Morehead State University Marching Eagles. Linville is a member of the award winning percussion unit of the band playing cytrbals.



**SPORTS EXTRA Hawk Bond Photo**  
Morehead State University President and First Lady, Dr. and Mrs. C. Nelson Grote watch the final seconds of the first half as they make ready to go to midfield for the crowning of the 1989 Morehead State Homecoming Queen.