

Welcome Back Students to the 1988-89 School Year



SEPTEMBER Nicholas County School Calendar

Clip and Save Each Month

Monday	Tuesday	Wednesday	Thursday	Friday	Saturday
5 Labor Day (No School)	6 Girl Scout Parent Meeting/ Nicholas County Elementary Limestone Academic League Competition 6:15 NCH/Track/At Home	7 Registration for Adult Education and G.E.D. Classes Register at Community Action Center	8 Education and G.E.D. Classes F. R. A. New Member Party/After School/In Department Girl's Jr. High Basketball 7:30 Gr. 7/8 In Grade/Track Co. (A)	9 10 	11 12 17-18 Regional TLC/Woodmen of the World Camp/Lexington
12 Regular Meeting Nicholas Co. Board of Education/6:00 Adult Education and G.E.D. classes begin/6:30-8:30 Community Action Center	13 Limestone Academic League Competition/High Juniata/Track/6:15 (A) Girl's Jr. High Basketball/7th grade 6:00, 8th grade 7:30/Track Co. (A)	14 FHA Chapter Meeting/2:30 Nicholas County High School Library	15 Band Meeting for 5th grade students/7:00 NCE	16 17 17-18 Regional TLC/Woodmen of the World Camp/Lexington	18 19 20 21 22 23 24 FHA Regional Meeting/Midway College/8:00 a.m.
19 FHA Creed Contest/Home Ec. Department	20 Limestone Academic League Competition/High Juniata/Track/6:15 (A) Girl's Jr. High Basketball/7th grade 6:00, 8th grade 7:30/Track Co. (A)	21 "Job Interview"/NCH-FHA Home Ec. Department	22 Girls' Jr. High Basketball/7th Gr. 6:00; 8th Gr. 7:30/Paris (A) Boy Scout Parent Meeting/ NCE 7:00	23 24 25 26 27 28 29 30 Coming Events: October 13, Foods & Nutrition/ FHA Home Ec. Dept./NCH 11-12, First Test, Parliamentary Test, Illustrated Tab. Product Competition/ FHA Home Ec. Dept./NCH	31 32 33 34 35 36 37 38 39 40 41 42 43 44 45 46 47 48 49 50 51 52

First National Bank of Carlisle
Member FDIC

Bobby Duncan Electric
102 Broadway - Carlisle, KY
289-2539

We've Been Going to School With Carlisle & Nicholas Co. Since 1921
Carlisle Drug Co.
THE FARMER'S STORE
CARLISLE, KY.

Nicholas County Board of Education

Garrett's Furniture
222 W. Main 289-2308

The Carlisle Mercury
234 North Locust Street
289-2464

SPORTS

Mason County Lands Nicholas a 34-12 setback

CARLISLE - Falling behind 20-12 at halftime, Nicholas County was unable to mount any offense in the second half to falling 34-12 to Mason County.

Nicholas County fell to 1-2 with the loss, as Mason improved to 3-0.

Frankfort next

FRANKFORT - Nicholas County will take its 1-2 season mark on the road for the first time this season, Friday night, traveling to Frankfort to battle Frankfort High School.

The Panthers, under the direction of veteran head coach Raymond Webb, will sport a 2-3 slate entering the contest.

Nicholas County Head Coach Robbie Barr is concerned about this week's opponent.

"Frankfort plays a very tight formation, and has relatively small linemen, who will hit hard and block low."

"The runningbacks for Frankfort have good speed, but not a great deal of size."

"This Frankfort team is quick, and will not overpower you, but likes to run a straight T-formation, much like other Webb coached teams."

Although the Panthers have one loss this season, Barr is cautious about the opponent.

"Frankfort has confidence with a winning season behind them, and will find a way to beat you, especially at their place."

"Frankfort doesn't like to pass that often, their basic strategy and drives are mainly stays in the offense."

"As for an passing game, Frankfort only threw two passes against Eminence in 13-27 Frankfort win, last Friday night."

"We must be prepared for this team," Barr said, "or Frankfort has the ability to win as Richmond Madison did."

Kickoff at Sower Field in Frankfort is set for 8 p.m.

Nicholas County 48 Midwell found Brian Piggimer with a 21 yard completion.

Mason County's offense continued to push ahead and with 7:22 to play in the first quarter Midwell issued a 13 yard strike to Faulkner in the end zone for the game's first score. Mason attempted a two point conversion, but it was no good. Mason County led 6-0.

Three plays later Nicholas County was forced to punt, and Mason took over at the 28.

Nicholas County's next possession was good for only seven yards, keyed by a pass interference play, and on second and eight at the Mason County 46, Brown had a stop a potential score.

Mason County had possession as the second quarter began with a third and two at the Nicholas County 20 yard line.

Four plays later Nicholas County's defense went left as Mason County's Gary Greene went up the middle for a score from the four yard line.

The two point conversion failed, again, and Mason County led 12-6, with 16:35 to play in the first half.

Nicholas County's Frankie Johnson returned the kickoff 15 yards to give the Jackets the ball first and 19 at the Nicholas County 35.

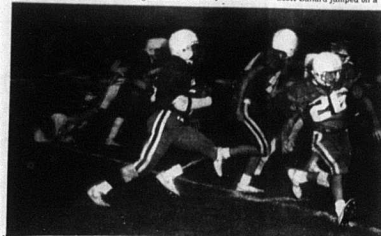
Brown was sacked for a four yard loss on first down, the Jackets had a flag for illegal procedure and faced a second and 19 from the Nicholas 28.

Johnson found a hole in the left side of the Mason County defensive line and sprinted to the Mason County 47 before a touchdown saving tackle stopped the Nicholas runningback.

Johnson went off the left side for three more yards. Brown hooked up with Collier Mathes to set up third down.

Nicholas County had a passed picked off by Jamey High who went 65 yards for the score, but a roughing the passer flag stopped the play.

Continued on Page 12



Nicholas County's Frankie Johnson looks for a block from William Workman 50 and yardage against Mason County Friday night. The Jackets fell to 1-2, with a 34-12 loss at home.

Valu-Rite Special
Sylvania Soft White Light Bulbs, (4 pack) \$1.77
Hopkins Drug
Main Street - Carlisle 289-2274

OPENING SOON!
Eddie's Family Restaurant
Eddie & Cindy Brierly, Owners
106 W. Main, Carlisle, 289-2864

HELP WANTED:
Waitresses and Cooks
Stop by for an application

Re-Seed Hay & Pasture Fields
Alfalfa, Clover, Orchard Grass, Timothy
Use Our No-Till Planter
AVAILABLE AT

Frank Hinton & Son Plummers Landing 876-3171
Mayslick Mill Mayslick 783-6602

Jabetown Mill Ewing 267-2161
Fleming Co. Farm Supply Flemingsburg 845-1821

1988 Clearance Sale
1% Over Invoice
on all new 1988 Cars & Trucks including Caravans and Imports

We will show you the INVOICE!

Up To \$1,000 Rebates on Selected Models

6.8% A.P.R. Financing on Selected Models

GATEWAY
CHRYSLER, FLYMOUTH, DODGE INC.
MOUNT STERLING, KY
DBA DCA'S GMC TRUCKS

675 VANCE DRIVE ON THE BYPASS
498-2012 (NEXT TO HARDEE'S) 498-2040
MON - FRI 8:30 - 6:00 SAT 8:30 - 6:00