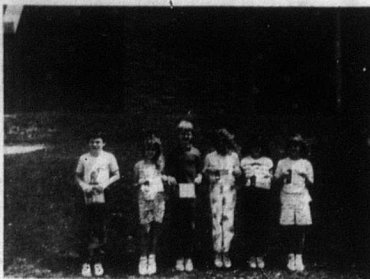
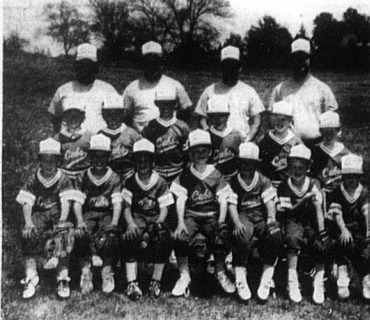


GENERAL NEWS



Nicholas County Elementary School Conservation Poster Winners were, (l-r) Jason Cleaver, second place winner Crystal Lee Livingood, first place winner Kyle Smoot, Karen Livingood, Danita Booth and Staci Robinson. Gary Kirby was absent when photo was taken.



1988 Southern Champions Minor League Baseball and Hammer-Up Tournament Champions are Front row: L-R: Jeremy Hunter, Jamie Laver, George Livingood, J.T. Harries, Brian Anderson, Bobby Price and R.L. Tucker; Middle row: L-R: James Kenney, Jason Jones, Collin Broderick, Darren Hunter, Chris Mitchell, and Jake Denton; Back row: L-R: Jackie Kenney, assistant coach, Larry Tinsler, head coach, Billy Anderson, assistant coach, and Tommy Barnes, assistant coach. The Cubs were sponsored by Deposit Bank.

Wilkinson declares state water emergency

Dry weather continues to plague Commonwealth

FRANKFORT (AP) - Gov. Wallace Wilkinson has put in motion the apparatus that could allow the state to take over water distribution systems as the drought of 1988 tightens its dusty grip on Kentucky.

Wilkinson took few overt actions to accompany his declaration of an emergency last Friday, but said he wants to have the plan in place to take over the water supply.

"We will take whatever steps are necessary to help communities get water that can't help themselves," Wilkinson said during a news conference.

In related developments Friday, the Cabinet for Human Resources announced help for people whose health is endangered by the heat, and other officials tried to ease the burden on farmers caused by the record heat and lack of rainfall.

In the final analysis, only lots of rain will solve the problem," Wilkinson said. Beginning Monday, people with heat-related health problems were able to get help from the Emergency Summer

Aid Program, which will provide \$500,000 to regional agencies to buy fans, air conditioners or pay utility bills. Community action agencies in each county will require a signed note from a doctor or nurse before taking application for assistance.

The only order from Wilkinson Friday was to halt operations at locks 5-14 on the Kentucky River, which is the source of water for 13 communities in the central part of the state.

"The Kentucky River is the

most critical at this point," said Natural Resources Secretary Carl Bradley.

U.S. Sen. Wendell Ford, D-Ky., and U.S. Rep. Larry Hopkins, R-6th District, said in a joint news release the importance of locks and dams 5-14. They announced that funding authorizing the U.S. Army Corps of Engineers to maintain the locks and dams has full congressional approval.

In 1981, the Corps of Engi-

neers had announced its intention to discontinue use of locks and dams 5-14 on the river due to absence of commercial traffic.

Bradley said the Salt, Licking, Cumberland and Tennessee river systems are also being watched as water levels slowly fall.

As part of the executive order, Wilkinson created the Water Emergency Team to advise him on needed steps to ensure water supplies. That group will meet Monday and probably daily thereafter, said

Nicholas County Hospital for possible head injuries by the Nicholas County Ambulance service.

Vurgess was cited for driving under the influence.

Trooper William Hayes investigated a non-injury accident at 10:10 a.m. July 6, in the limits of 4.170 miles east of Carlisle on

U.S. 42. The driver was James T. Small, 16 of Flemingsburg, driving a 1974 Chevrolet.

Gregory Silbert, 36, of Carlisle, was driving a John Deere tractor.

Jones has charged William Yarnall, 34, of Paris, with alcohol intoxica-

A legislative perspective with Adrian Arnold

The legislature creates an agency that will make loans to counties with populations of 5,000 or less, or those whose average unemployment has exceeded the state average for four of the past five years.

The money will be used to help attract industry into areas previously considered unsuitable for business investment.

The loans would be repaid by imposing a special surtax on the wages of those employed by the new industry.

In the upcoming months, members of the General Assembly will be looking to this growing number of issues developing for consideration in 1990.

Among those we must include agribusiness development. Kentucky farmers must begin diversification of crops to meet the future trends of our nation's agricultural priorities.

Economic development for our welfare recipients is a critical need that must be addressed. These Kentuckians must be encouraged to develop their own self-sufficiency, produce

live citizens of our state. In addition, our commitment to an improved education system must remain a firm. As a body, legislators must address the recent court decision that declares the current state education funding system unconstitutional.

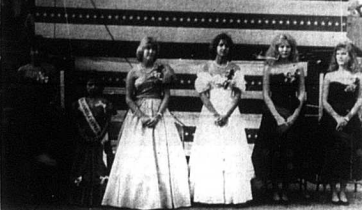
Several existing programs for economic development have surfaced for our area. I have every confidence that the residents will share positive benefits from these new employment sources.

Owingsville has the good fortune to have several Clinton Corporation that makes parts and will employ 230 workers.

Both County is negotiating with the Austin Company to relocate its operations. The company works with wood products.

And, Mt. Sterling officials are in the very early stages of location talks with a company whose name is not yet public knowledge.

These of us living in the 74th legislative district are fortunate to have so many positive possibilities pending when they have questions or comments to enable them to be at my home on June 20-24.



Candidates anxiously await the official crowning of the Blackberry Festival queen. From left to right are: Leslie Duncan (last year's queen), Mandy Nicole Willington (Little Miss America Pre-Teen) candidates Donna McLeod, Sonya Johnson, Tracy Dotson, and Lisa Moss. Miss Dotson was selected as queen. - Black Road Photo

Barry Ritchie, guitarist, appeared with Darlene Power and the Showmasters at the newly opened J.D.M. County Boy Restaurant on July 9 and 10. Live music will continue to be a practice at the establishment.

Heather Mathis Photo

Barry Ritchie, guitarist, appeared with Darlene Power and the Showmasters at the newly opened J.D.M. County Boy Restaurant on July 9 and 10. Live music will continue to be a practice at the establishment.

Heather Mathis Photo

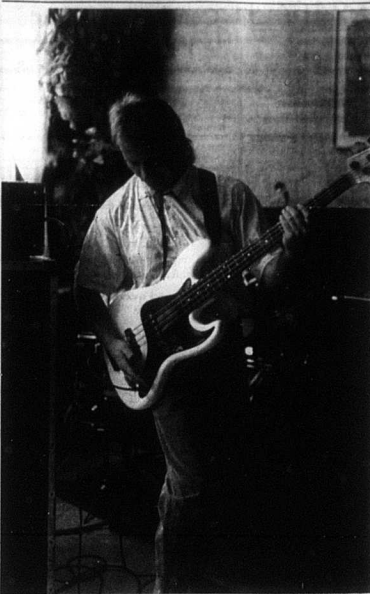
Barry Ritchie, guitarist, appeared with Darlene Power and the Showmasters at the newly opened J.D.M. County Boy Restaurant on July 9 and 10. Live music will continue to be a practice at the establishment.

Heather Mathis Photo



Candidates anxiously await the official crowning of the Blackberry Festival queen. From left to right are: Leslie Duncan (last year's queen), Mandy Nicole Willington (Little Miss America Pre-Teen) candidates Donna McLeod, Sonya Johnson, Tracy Dotson, and Lisa Moss. Miss Dotson was selected as queen. - Black Road Photo

GENERAL NEWS



Barry Ritchie, guitarist, appeared with Darlene Power and the Showmasters at the newly opened J.D.M. County Boy Restaurant on July 9 and 10. Live music will continue to be a practice at the establishment.

Harrison standout signs

Reprinted by permission from The Carlisle Democrat by Jeff Hopkins

"I decided during the first semester that I missed golf too much," said Tony Hunt, minutes after signing to play for Brescia College next season.

Hunt, who will be a sophomore in college next season, is transferring from the University of Kentucky, where he didn't play golf to the smaller Brescia College in Italy.

Wilkinson ended his briefing in calling for diversion of water from the Great Lakes to the Mississippi River for drought relief.

In a letter to President Reagan, July 9, in limits of Carlisle.

Workman was turned over to the Nicholas County Jail.

Be sure to read your mail label to know when your subscription should be renewed

tony Hunt, sitting center, signed with Brescia College to play golf. Also pictured are sitting right, Brescia Coach David Bartholomew; sitting left, Brenda Hunt; standing left, Jerry Dawson and Bill Hunt.

tony Hunt, sitting center, signed with Brescia College to play golf. Also pictured are sitting right, Brescia Coach David Bartholomew; sitting left, Brenda Hunt; standing left, Jerry Dawson and Bill Hunt.

tony Hunt, sitting center, signed with Brescia College to play golf. Also pictured are sitting right, Brescia Coach David Bartholomew; sitting left, Brenda Hunt; standing left, Jerry Dawson and Bill Hunt.

tony Hunt, sitting center, signed with Brescia College to play golf. Also pictured are sitting right, Brescia Coach David Bartholomew; sitting left, Brenda Hunt; standing left, Jerry Dawson and Bill Hunt.

Market Reports

FARMERS STOCK YARDS, INC.

FLEMINGSBURG, KY.
Saturday, July 9, 1988
HOGS-RECEIPTS: 298. Pack-
ers 42.00, Riverdale 42.00, Snow
18.00-27.00, Boone 20.00-25.00,
Shaw 21.50-42.00

CATTLE-RECEIPTS: 144.
Shaw 42.00-106.00, Hodges 45.00-
90.00, Baby Boone 52.00-106.00,
Slaughter Cows 36.00-48.00,
Slaughter Bulls 47.00-68.00, Cows
By Head 240.00-730.00, Cow and
Calf by Head 260.00-750.00, Stock
Bulls 44.00-750.00, Steers 44.00-
140.00-200.00

CALVES-RECEIPTS: 149. Top
yields 86.00-105.00, Medium 65.00-
85.00, Others 50.00-100.00
Sheep 48.00 top lambs 49.50

GATEWAY LIVESTOCK MARKET

MT. STEERING KY.

Saturday, July 9, 1988
CATTLE-RECEIPTS: 1878.
TOTAL RECEIPTS FOR THE
WEEK: 2990 CATTLE WEIRED
AT TIME OF SALE/COMPARED
TO LAST WEEK: Slaughter cows
2.00-3.00 lower, slaughter bulls
steady, slaughter steers, feeder
steers poorly treated, feeder steers
steady to 2.00 higher, fall advance
on weights under 700 lbs., feeder
bulls 2.00-3.00 higher

SLAUGHTER COWS/steering
Dulley 2.3 42.00-47.25, boning
Dulley 1.4 40.00-45.25, high dress-
ing individuals 40.00-50.00, Catter
2.1 37.00-47.00, Catter 2.4 50-
57.00, few lightweight Catter
down to 38.00

SLAUGHTER BULLS-Yield
Grade 1.2 1180-1800 lbs. indi-

ing 78.00 carcass boning percent
67.00-82.75, yield grade 2 1180-
1275 lbs. indicating 78.75 percent
54.00-87.50

FEEDER STEERS-also a lot
of prime 180-240 lbs. 8.00-10.00
FEDER TITERS-Medium and
Small Frame No. 1, 1100-1300 lbs.
102.00-114.00, 300-400 lbs. 89.00-
105.00, 400-500 lbs. 77.00-86.00,
500-600 lbs. 74.00-83.00, 600-700
lbs. 70.00-74.00, 700-800 lbs. 62.00-
68.00, 800-910 lbs. 60.00-62.50,
Small Frame No. 1, 1200-1400 lbs.
72.00-84.00, 400-500 lbs. 71.00-
77.00, 500-600 lbs. 68.00-75.00,
750-850 Medium Frame No. 2, 300-
500 lbs. 70.00-81.00, 400-600 lbs.
68.00-74.00, 600-700 lbs. 60.00-
63.00, Large Frame No. 2, 300-400
lbs. 65.00-70.00, 400-500 lbs.
60.00-65.00, 500-600 lbs. 55.00-
60.00, 600-700 lbs. 50.00-55.00,
700-800 lbs. 45.00-50.00, 800-900
lbs. 37.75-42.50, package 500 lbs.
63.00

FEDER HEIFERS-Medium and
Large Frame No. 1, 1200-1400 lbs.
79.00-84.00, 300-400 lbs. 77.00-
82.00, 400-500 lbs. 74.00-79.00,
500-600 lbs. 65.00-74.00, 600-700
lbs. 64.00-68.45, 700-800 lbs. 58.00-
64.50, Small Frame No. 1, 1200-1400
lbs. 65.00-73.00, 400-500 lbs. 63.00-
69.75, 500-600 lbs. 62.00-63.50,
600-700 lbs. 58.00-63.00, 700-800
lbs. 55.00-60.00, 800-900 lbs. 50.00-
55.00, 900-1000 lbs. 45.00-50.00,
1000-1100 lbs. 40.00-45.00, 1100-1200
lbs. 35.00-40.00, 1200-1300 lbs. 30.00-
35.00, 1300-1400 lbs. 25.00-30.00,
1400-1500 lbs. 20.00-25.00, 1500-1600
lbs. 15.00-20.00, 1600-1700 lbs. 10.00-
15.00, 1700-1800 lbs. 5.00-10.00,
1800-1900 lbs. 0.00-5.00, 1900-2000
lbs. 0.00-5.00, 2000-2100 lbs. 0.00-5.00,
2100-2200 lbs. 0.00-5.00, 2200-2300
lbs. 0.00-5.00, 2300-2400 lbs. 0.00-5.00,
2400-2500 lbs. 0.00-5.00, 2500-2600
lbs. 0.00-5.00, 2600-2700 lbs. 0.00-5.00,
2700-2800 lbs. 0.00-5.00, 2800-2900
lbs. 0.00-5.00, 2900-3000 lbs. 0.00-5.00,
3000-3100 lbs. 0.00-5.00, 3100-3200
lbs. 0.00-5.00, 3200-3300 lbs. 0.00-5.00,
3300-3400 lbs. 0.00-5.00, 3400-3500
lbs. 0.00-5.00, 3500-3600 lbs. 0.00-5.00,
3600-3700 lbs. 0.00-5.00, 3700-3800
lbs. 0.00-5.00, 3800-3900 lbs. 0.00-5.00,
3900-4000 lbs. 0.00-5.00, 4000-4100
lbs. 0.00-5.00, 4100-4200 lbs. 0.00-5.00,
4200-4300 lbs. 0.00-5.00, 4300-4400
lbs. 0.00-5.00, 4400-4500 lbs. 0.00-5.00,
4500-4600 lbs. 0.00-5.00, 4600-4700
lbs. 0.00-5.00, 4700-4800 lbs. 0.00-5.00,
4800-4900 lbs. 0.00-5.00, 4900-5000
lbs. 0.00-5.00, 5000-5100 lbs. 0.00-5.00,
5100-5200 lbs. 0.00-5.00, 5200-5300
lbs. 0.00-5.00, 5300-5400 lbs. 0.00-5.00,
5400-5500 lbs. 0.00-5.00, 5500-5600
lbs. 0.00-5.00, 5600-5700 lbs. 0.00-5.00,
5700-5800 lbs. 0.00-5.00, 5800-5900
lbs. 0.00-5.00, 5900-6000 lbs. 0.00-5.00,
6000-6100 lbs. 0.00-5.00, 6100-6200
lbs. 0.00-5.00, 6200-6300 lbs. 0.00-5.00,
6300-6400 lbs. 0.00-5.00, 6400-6500
lbs. 0.00-5.00, 6500-6600 lbs. 0.00-5.00,
6600-6700 lbs. 0.00-5.00, 6700-6800
lbs. 0.00-5.00, 6800-6900 lbs. 0.00-5.00,
6900-7000 lbs. 0.00-5.00, 7000-7100
lbs. 0.00-5.00, 7100-7200 lbs. 0.00-5.00,
7200-7300 lbs. 0.00-5.00, 7300-7400
lbs. 0.00-5.00, 7400-7500 lbs. 0.00-5.00,
7500-7600 lbs. 0.00-5.00, 7600-7700
lbs. 0.00-5.00, 7700-7800 lbs. 0.00-5.00,
7800-7900 lbs. 0.00-5.00, 7900-8000
lbs. 0.00-5.00, 8000-8100 lbs. 0.00-5.00,
8100-8200 lbs. 0.00-5.00, 8200-8300
lbs. 0.00-5.00, 8300-8400 lbs. 0.00-5.00,
8400-8500 lbs. 0.00-5.00, 8500-8600
lbs. 0.00-5.00, 8600-8700 lbs. 0.00-5.00,
8700-8800 lbs. 0.00-5.00, 8800-8900
lbs. 0.00-5.00, 8900-9000 lbs. 0.00-5.00,
9000-9100 lbs. 0.00-5.00, 9100-9200
lbs. 0.00-5.00, 9200-9300 lbs. 0.00-5.00,
9300-9400 lbs. 0.00-5.00, 9400-9500
lbs. 0.00-5.00, 9500-9600 lbs. 0.00-5.00,
9600-9700 lbs. 0.00-5.00, 9700-9800
lbs. 0.00-5.00, 9800-9900 lbs. 0.00-5.00,
9900-10000 lbs. 0.00-5.00, 10000-10100
lbs. 0.00-5.00, 10100-10200 lbs. 0.00-5.00,
10200-10300 lbs. 0.00-5.00, 10300-10400
lbs. 0.00-5.00, 10400-10500 lbs. 0.00-5.00,
10500-10600 lbs. 0.00-5.00, 10600-10700
lbs. 0.00-5.00, 10700-10800 lbs. 0.00-5.00,
10800-10900 lbs. 0.00-5.00, 10900-11000
lbs. 0.00-5.00, 11000-11100 lbs. 0.00-5.00,
11100-11200 lbs. 0.00-5.00, 11200-11300
lbs. 0.00-5.00, 11300-11400 lbs. 0.00-5.00,
11400-11500 lbs. 0.00-5.00, 11500-11600
lbs. 0.00-5.00, 11600-11700 lbs. 0.00-5.00,
11700-11800 lbs. 0.00-5.00, 11800-11900
lbs. 0.00-5.00, 11900-12000 lbs. 0.00-5.00,
12000-12100 lbs. 0.00-5.00, 12100-12200
lbs. 0.00-5.00, 12200-12300 lbs. 0.00-5.00,
12300-12400 lbs. 0.00-5.00, 12400-12500
lbs. 0.00-5.00, 12500-12600 lbs. 0.00-5.00,
12600-12700 lbs. 0.00-5.00, 12700-12800
lbs. 0.00-5.00, 12800-12900 lbs. 0.00-5.00,
12900-13000 lbs. 0.00-5.00, 13000-13100
lbs. 0.00-5.00, 13100-13200 lbs. 0.00-5.00,
13200-13300 lbs. 0.00-5.00, 13300-13400
lbs. 0.00-5.00, 13400-13500 lbs. 0.00-5.00,
13500-13600 lbs. 0.00-5.00, 13600-13700
lbs. 0.00-5.00, 13700-13800 lbs. 0.00-5.00,
13800-13900 lbs. 0.00-5.00, 13900-14000
lbs. 0.00-5.00, 14000-14100 lbs. 0.00-5.00,
14100-14200 lbs. 0.00-5.00, 14200-14300
lbs. 0.00-5.00, 14300-14400 lbs. 0.00-5.00,
14400-14500 lbs. 0.00-5.00, 14500-14600
lbs. 0.00-5.00, 14600-14700 lbs. 0.00-5.00,
14700-14800 lbs. 0.00-5.00, 14800-14900
lbs. 0.00-5.00, 14900-15000 lbs. 0.00-5.00,
15000-15100 lbs. 0.00-5.00, 15100-15200
lbs. 0.00-5.00, 15200-15300 lbs. 0.00-5.00,
15300-15400 lbs. 0.00-5.00, 15400-15500
lbs. 0.00-5.00, 15500-15600 lbs. 0.00-5.00,
15600-15700 lbs. 0.00-5.00, 15700-15800
lbs. 0.00-5.00, 15800-15900 lbs. 0.00-5.00,
15900-16000 lbs. 0.00-5.00, 16000-16100
lbs. 0.00-5.00, 16100-16200 lbs. 0.00-5.00,
16200-16300 lbs. 0.00-5.00, 16300-16400
lbs. 0.00-5.00, 16400-16500 lbs. 0.00-5.00,
16500-16600 lbs. 0.00-5.00, 16600-16700
lbs. 0.00-5.00, 16700-16800 lbs. 0.00-5.00,
16800-16900 lbs. 0.00-5.00, 16900-17000
lbs. 0.00-5.00, 17000-17100 lbs. 0.00-5.00,
17100-17200 lbs. 0.00-5.00, 17200-17300
lbs. 0.00-5.00, 17300-17400 lbs. 0.00-5.00,
17400-17500 lbs. 0.00-5.00, 17500-17600
lbs. 0.00-5.00, 17600-17700 lbs. 0.00-5.00,
17700-17800 lbs. 0.00-5.00, 17800-17900
lbs. 0.00-5.00, 17900-18000 lbs. 0.00-5.00,
18000-18100 lbs. 0.00-5.00, 18100-18200
lbs. 0.00-5.00, 18200-18300 lbs. 0.00-5.00,
18300-18400 lbs. 0.00-5.00, 18400-18500
lbs. 0.00-5.00, 18500-18600 lbs. 0.00-5.00,
18600-18700 lbs. 0.00-5.00, 18700-18800
lbs. 0.00-5.00, 18800-18900 lbs. 0.00-5.00,
18900-19000 lbs. 0.00-5.00, 19000-19100
lbs. 0.00-5.00, 19100-19200 lbs. 0.00-5.00,
19200-19300 lbs. 0.00-5.00, 19300-19400
lbs. 0.00-5.00, 19400-19500 lbs. 0.00-5.00,
19500-19600 lbs. 0.00-5.00, 19600-19700
lbs. 0.00-5.00, 19700-19800 lbs. 0.00-5.00,
19800-19900 lbs. 0.00-5.00, 19900-20000
lbs. 0.00-5.00, 20000-20100 lbs. 0.00-5.00,
20100-20200 lbs. 0.00-5.00, 20200-20300
lbs. 0.00-5.00, 20300-20400 lbs. 0.00-5.00,
20400-20500 lbs. 0.00-5.00, 20500-20600
lbs. 0.00-5.00, 20600-20700 lbs. 0.00-5.00,
20700-20800 lbs. 0.00-5.00, 20800-20900
lbs. 0.00-5.00, 20900-21000 lbs. 0.00-5.00,
21000-21100 lbs. 0.00-5.00, 21100-21200
lbs. 0.00-5.00, 21200-21300 lbs. 0.00-5.00,
21300-21400 lbs. 0.00-5.00, 21400-21500
lbs. 0.00-5.00, 21500-21600 lbs. 0.00-5.00,
21600-21700 lbs. 0.00-5.00, 21700-21800
lbs. 0.00-5.00, 21800-21900 lbs. 0.00-5.00,
21900-22000 lbs. 0.00-5.00, 22000-22100
lbs. 0.00-5.00, 22100-22200 lbs. 0.00-5.00,
22200-22300 lbs. 0.00-5.00, 22300-22400
lbs. 0.00-5.00, 22400-22500 lbs. 0.00-5.00,
22500-22600 lbs. 0.00-5.00, 22600-22700
lbs. 0.00-5.00, 22700-22800 lbs. 0.00-5.00,
22800-22900 lbs. 0.00-5.00, 22900-23000
lbs. 0.00-5.00, 23000-23100 lbs. 0.00-5.00,
23100-23200 lbs. 0.00-5.00, 23200-23300
lbs. 0.00-5.00, 23300-23400 lbs. 0.00-5.00,
23400-23500 lbs. 0.00-5.00, 23500-23600
lbs. 0.00-5.00, 23600-23700 lbs. 0.00-5.00,
23700-23800 lbs. 0.00-5.00, 23800-23900
lbs. 0.00-5.00, 23900-24000 lbs. 0.00-5.00,
24000-24100 lbs. 0.00-5.00,