

PIC-PAC
SUPERMARKETS
CARLISLE PIC-PAC

\$100 Payroll Winner - Faye King
Monday - Thursday 8 a.m. - 8 p.m.
Friday - Saturday 8 a.m. - 9 p.m.
Sunday Noon - 6 p.m.

Check with us for the many in-store specials that may not appear in our ad. We always have milk, soft drinks, bread and other popular items at reduced prices.

Prices good thru Sunday, October 4, 1987

Vegetables
3/109
16-17 OZ. CANS

1 Lb. Can Coffee
229
16 OZ. CANS

Wesson Oil
219
48 OZ. BOTTLE

White Bread 3/\$1
HYDE PARK - 16 oz loaf

Chunk Light Tuna
.69
12 OZ. CANS

Grade A Large Eggs69
DOZEN HYDE PARK

Bath Soap
179
DIAL

Cake Mix89
16.5 OZ. DUNCAN MIXES

Dog Chow
799
PURINA

Cottonelle Bath Tissue89
4 ROLL PKG. ASSORTED

Margarine
3/1
PARIVA

Orange Juice 169
64 OZ. CITRUS HILL SELECT

Meat Market.

ARMOUR STAR Sliced Bacon 149
ARMOUR STAR Leg Quarters L.B. .29
ARMOUR STAR Chicken Breast L.B. 299

ARMOUR STAR Sliced Bologna 159
ARMOUR STAR Pork Sausage 169
ARMOUR STAR Chicken Fried Steak 179
ARMOUR STAR Chuckwagon Steak 179

Country Mile.

Ripe Bananas 3/1
Baking Potatoes 199
Red or White Grapes99

Bakery-deli.

Boiled Ham 229
Club Bologna 199
American Cheese 249

VCR Rental \$3 per day
with rental of one or more tapes
New Releases Now Available

Hoolers-Gene Hackman Police Academy 4
Blind Date
Silent Night - Deadly Night II
Over the Top - Stallone
Manomani
Critic's Condition

SPORTS.



Nicholas County junior high eighth grade girls' action was intense as Nikki Hines fires an inbounds pass to Susan Faye King. Kristi Barton is on hand to help. Nicholas County won the seventh grade game 40-26, and fell in the eighth grade game 40-23. - Steve Hines/PH

Junior girls Jackets split pair with Paris

Nicholas County junior high girls' basketball teams split in their eighth grade game, Paris defeated Nicholas County 40-23, but Paris pulled away in the final quarter after seven points were scored by the home team. They finished the game with 22-14 at the half, 31-14 at the three-quarter mark, and 40-23 at the end of the game. Paris pulled away in the final quarter after seven points were scored by the home team. They finished the game with 22-14 at the half, 31-14 at the three-quarter mark, and 40-23 at the end of the game.

Ky Afield

By Norma Mitchell

A proposal to remove the 12-inch size limit on Kentucky spotted bass statewide has been approved by the Kentucky Department of Fish and Wildlife Resources Commission. The regulation is scheduled to become effective January 1, 1988, pending legislative process, and applies to all lakes, rivers and streams in the state.

General Byrnes, back bass biologist who drafted the proposal, says harvest information shows that the Kentucky spotted bass resource is almost entirely wasted under the 12-inch minimum size limit.

Most Kentucky spotted bass die of natural causes before reaching 12 inches because of slow growth rates and a short life span.

There are some Kentucky spotted bass which do reach 12 inches and above, yet they represent an insignificant percentage of the total Kentucky spotted bass population and deprive every small portion of the bass harvest.

For example, according to trawl surveys, the Kentucky spotted bass harvest at Grayson Lake under a 15-inch minimum size limit was zero from 1982-86, although 67 percent of Grayson's total bass population are Kentucky spotted bass.

Two other lakes, Cave Run and Parkway, where the size limit on Kentucky spotted bass has already been lifted, showed similar results prior to the size limit removal.

"Removing the size limit statewide has two major advantages for the angler," said Byrnes. "It will enable us to harvest Kentucky spotted bass with a much greater frequency and at a much earlier age. This will help reduce competition for food between Kentucky spotted bass, largemouth bass and smallmouth bass."

The overall percentage of Kentucky spotted bass versus largemouth and smallmouth bass species will allow the largemouth and smallmouth, which are the more desirable and sought after of the three major bass species, to increase in size and numbers," Byrnes added.

Although all lakes will benefit from the removal of the size limit, lakes such as those in Eastern Kentucky that have a smaller bass fish population will benefit most.

Lanier River Lake's total bass population is 89 percent Kentucky spotted bass.

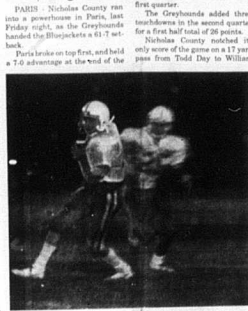
Likewise, Flatgap Lake has 80 percent Kentucky spotted bass compared to largemouth and smallmouth.

Grayson Lake has 67 percent Kentucky spotted bass and Cave Run, 61 percent.

The removal of the 12-inch size limit may decrease the population percentage and allow harvest of Kentucky spotted bass that is currently not available to fishers.

"This resource management decision should prove to be beneficial for all fishermen. There will be more opportunity to harvest Kentucky spotted bass and more largemouth and smallmouth to catch," Byrnes concluded.

Greyhounds race to 61-7 win



NCHS quarterback Todd Day, left, looks to pass. As Tip Fryman (20) comes around for the reverse, Nicholas County fans had little scoring to cheer about, as Paris downed the Bluejackets 47-17 in Paris last Friday. - Steve Hines/PH

Paris Nicholas County ran into a powerhouse in Paris, last Friday night, as the Greyhounds handed the Bluejackets a 47-17 setback.

Paris broke on the first and held a 7-0 advantage at the end of the first quarter.

The Greyhounds added three touchdowns in the second quarter for a first half total of 21 points.

Nicholas County rebounded in the second half, with 22 in the third quarter and 13 more in the final frame.

"We should have scored at least one more in the first half and maybe twice," NCHS Head Coach Robbie Barr said of the game.

"We were inside the 20 on a couple occasions and an interception stopped us. That interception was in the end zone as we were moving for the score. Instead of going 7-0 at the half, it should have been 21-14. We allowed Paris a quick score, which shouldn't have happened, and took ourselves out of the game. They finished the night with 12-28 passing along with two interceptions and one scoring toss. They're passes were good for 200 yards.

Tip Fryman had eight catches for 194 yards. Frankie Robinson took for 23 yards and Workman, along with scores, two for 43 yards.

Fryman rushed for 55 yards on 10 carries to lead Nicholas County.

Sam Allison came on to pass four times for Nicholas County, averaging 39 yards per kick.

Nicholas County finished the game with 20 yards total offense, but couldn't take advantage of scoring opportunities.

"We just couldn't capitalize on the opportunities," Barr said of the game. "We dropped a touchdown pass, and stopped moving at the key times."

Kevin Hughes lead the NCHS defense with 12 tackles, while Day had nine and Fryman eight.

"The fact we scored 47 points on us," he said. "We got caught up in the tradition over there. It was homecoming, a big crowd, and a lot of emotion."

Rams pose big threat

"Raceland is as good or better than Paris," Barr said of this Friday's opponent. "They have always had a good program there, and this year will be no exception."

"Running from the widehorns, Raceland has two fine running backs and we'll have our backs full all night."

"We know what to expect. Raceland will run a lot of misdirection and operate with a lot of speed. We'll have to be alert to that."

Raceland is no longer a district opponent for Nicholas County, but with an open date Barr said he was ready to line-up against the Rams again this season.

"We can look for a strong win-loss... it'll be a tough game."

50th Anniversary Sale

IT'S A GRAND AM DAY

Multi-Mile TIRE & AUTOMOTIVE CENTER
987-4530
QUALITY PRICE-ROAD HAZARD WARRANTY

WILD COUNTRY
FOUR WHEEL DRIVE ALL SEASON RADIALS

MICHELIN XH STEEL BELTED XH WHITEWALL
MICHELIN XAG STEEL BELTED ALL SEASON
NOVA STEEL RADIAL BLACK WALL

XL STEEL RADIAL SPECIAL

ANY SIZE 13" Radial Tire \$2895
ANY SIZE 14" Radial Tire \$3395
ANY SIZE 15" Radial Tire \$3895

FREE MOUNTING-FREE ROTATION

HIGH PERFORMANCE SR & HR RATED
GRAND AM 50 RADIAL OWL
GRAND AM 70 RADIAL OWL
GRAND SPIRIT RADIAL BLACK WALL

Mud & Snow Recaps Any Size 15" \$2995
Multi-Mile 10 PLY All Season Radials \$8595

ALIGNMENT \$1395
FRONT DISC BRAKES \$4295
LUBI-OIL-FILTER \$1395

AIR CONDITIONING \$1895
GAS CHARGED SHOCK ABSORBERS \$1995
FLUSH & FILL \$1995

OPEN DAILY 8 AM TO 6 PM-SAT 8 AM TO 2 PM
90 DAYS SAME AS CASH WITH APPROVED CREDIT