

AGRI-NEWS

FEDERAL-STATE MARKET NEWS
FLEMINGSBURG, KY
FEEDER CALF SALES
PARK STOCK YARDS
WEDNESDAY, MAY 27, 1987
(COMPARED TO TWO WEEKS AGO)
Slaughter cows and bulls
poorly tested, feeder steers under
600 lbs. fully steady, over 600 lbs.
1,000-2,000 lighter, feeder heifers
1,000-1,800.

FEDERAL-STATE MARKET NEWS
WEDNESDAY, MAY 27, 1987
PARK STOCK YARDS
CATTLE AND CALVES
WEIGHED AT TIME OF SALE

FEDERAL-STATE MARKET NEWS
WEDNESDAY, MAY 27, 1987
PARK STOCK YARDS
CATTLE AND CALVES
WEIGHED AT TIME OF SALE

FEDERAL-STATE MARKET NEWS
WEDNESDAY, MAY 27, 1987
PARK STOCK YARDS
CATTLE AND CALVES
WEIGHED AT TIME OF SALE

FEDERAL-STATE MARKET NEWS
WEDNESDAY, MAY 27, 1987
PARK STOCK YARDS
CATTLE AND CALVES
WEIGHED AT TIME OF SALE

FEDERAL-STATE MARKET NEWS
WEDNESDAY, MAY 27, 1987
PARK STOCK YARDS
CATTLE AND CALVES
WEIGHED AT TIME OF SALE

FEDERAL-STATE MARKET NEWS
WEDNESDAY, MAY 27, 1987
PARK STOCK YARDS
CATTLE AND CALVES
WEIGHED AT TIME OF SALE

FEDERAL-STATE MARKET NEWS
WEDNESDAY, MAY 27, 1987
PARK STOCK YARDS
CATTLE AND CALVES
WEIGHED AT TIME OF SALE

FEDERAL-STATE MARKET NEWS
WEDNESDAY, MAY 27, 1987
PARK STOCK YARDS
CATTLE AND CALVES
WEIGHED AT TIME OF SALE

FEDERAL-STATE MARKET NEWS
WEDNESDAY, MAY 27, 1987
PARK STOCK YARDS
CATTLE AND CALVES
WEIGHED AT TIME OF SALE

FEDERAL-STATE MARKET NEWS
WEDNESDAY, MAY 27, 1987
PARK STOCK YARDS
CATTLE AND CALVES
WEIGHED AT TIME OF SALE

FEDERAL-STATE MARKET NEWS
WEDNESDAY, MAY 27, 1987
PARK STOCK YARDS
CATTLE AND CALVES
WEIGHED AT TIME OF SALE

FEDERAL-STATE MARKET NEWS
WEDNESDAY, MAY 27, 1987
PARK STOCK YARDS
CATTLE AND CALVES
WEIGHED AT TIME OF SALE

FEDERAL-STATE MARKET NEWS
WEDNESDAY, MAY 27, 1987
PARK STOCK YARDS
CATTLE AND CALVES
WEIGHED AT TIME OF SALE

FEDERAL-STATE MARKET NEWS
WEDNESDAY, MAY 27, 1987
PARK STOCK YARDS
CATTLE AND CALVES
WEIGHED AT TIME OF SALE

FEDERAL-STATE MARKET NEWS
WEDNESDAY, MAY 27, 1987
PARK STOCK YARDS
CATTLE AND CALVES
WEIGHED AT TIME OF SALE

FEDERAL-STATE MARKET NEWS
WEDNESDAY, MAY 27, 1987
PARK STOCK YARDS
CATTLE AND CALVES
WEIGHED AT TIME OF SALE

FEDERAL-STATE MARKET NEWS
WEDNESDAY, MAY 27, 1987
PARK STOCK YARDS
CATTLE AND CALVES
WEIGHED AT TIME OF SALE

FEDERAL-STATE MARKET NEWS
WEDNESDAY, MAY 27, 1987
PARK STOCK YARDS
CATTLE AND CALVES
WEIGHED AT TIME OF SALE

FEDERAL-STATE MARKET NEWS
WEDNESDAY, MAY 27, 1987
PARK STOCK YARDS
CATTLE AND CALVES
WEIGHED AT TIME OF SALE

FEDERAL-STATE MARKET NEWS
WEDNESDAY, MAY 27, 1987
PARK STOCK YARDS
CATTLE AND CALVES
WEIGHED AT TIME OF SALE

(COMPARED TO LAST WEEK)
Slaughter cows and bulls 1,000-2,000
higher, slaughter calves and vealers
steated, feeder steers steady,
medium-framed steers to 200 higher,
medium-framed steers to 200 higher,
medium-framed steers to 200 higher.

THURSDAY, MAY 28, 1987
PARK STOCK YARDS
CATTLE AND CALVES
WEIGHED AT TIME OF SALE

THURSDAY, MAY 28, 1987
PARK STOCK YARDS
CATTLE AND CALVES
WEIGHED AT TIME OF SALE

THURSDAY, MAY 28, 1987
PARK STOCK YARDS
CATTLE AND CALVES
WEIGHED AT TIME OF SALE

THURSDAY, MAY 28, 1987
PARK STOCK YARDS
CATTLE AND CALVES
WEIGHED AT TIME OF SALE

THURSDAY, MAY 28, 1987
PARK STOCK YARDS
CATTLE AND CALVES
WEIGHED AT TIME OF SALE

THURSDAY, MAY 28, 1987
PARK STOCK YARDS
CATTLE AND CALVES
WEIGHED AT TIME OF SALE

THURSDAY, MAY 28, 1987
PARK STOCK YARDS
CATTLE AND CALVES
WEIGHED AT TIME OF SALE

THURSDAY, MAY 28, 1987
PARK STOCK YARDS
CATTLE AND CALVES
WEIGHED AT TIME OF SALE

THURSDAY, MAY 28, 1987
PARK STOCK YARDS
CATTLE AND CALVES
WEIGHED AT TIME OF SALE

(COMPARED TO LAST WEEK)
Slaughter cows and bulls 1,000-2,000
higher, slaughter calves and vealers
steated, feeder steers steady,
medium-framed steers to 200 higher,
medium-framed steers to 200 higher,
medium-framed steers to 200 higher.

THURSDAY, MAY 28, 1987
PARK STOCK YARDS
CATTLE AND CALVES
WEIGHED AT TIME OF SALE

THURSDAY, MAY 28, 1987
PARK STOCK YARDS
CATTLE AND CALVES
WEIGHED AT TIME OF SALE

THURSDAY, MAY 28, 1987
PARK STOCK YARDS
CATTLE AND CALVES
WEIGHED AT TIME OF SALE

THURSDAY, MAY 28, 1987
PARK STOCK YARDS
CATTLE AND CALVES
WEIGHED AT TIME OF SALE

THURSDAY, MAY 28, 1987
PARK STOCK YARDS
CATTLE AND CALVES
WEIGHED AT TIME OF SALE

THURSDAY, MAY 28, 1987
PARK STOCK YARDS
CATTLE AND CALVES
WEIGHED AT TIME OF SALE

THURSDAY, MAY 28, 1987
PARK STOCK YARDS
CATTLE AND CALVES
WEIGHED AT TIME OF SALE

THURSDAY, MAY 28, 1987
PARK STOCK YARDS
CATTLE AND CALVES
WEIGHED AT TIME OF SALE

THURSDAY, MAY 28, 1987
PARK STOCK YARDS
CATTLE AND CALVES
WEIGHED AT TIME OF SALE

(COMPARED TO LAST WEEK)
Slaughter cows and bulls 1,000-2,000
higher, slaughter calves and vealers
steated, feeder steers steady,
medium-framed steers to 200 higher,
medium-framed steers to 200 higher,
medium-framed steers to 200 higher.

THURSDAY, MAY 28, 1987
PARK STOCK YARDS
CATTLE AND CALVES
WEIGHED AT TIME OF SALE

THURSDAY, MAY 28, 1987
PARK STOCK YARDS
CATTLE AND CALVES
WEIGHED AT TIME OF SALE

THURSDAY, MAY 28, 1987
PARK STOCK YARDS
CATTLE AND CALVES
WEIGHED AT TIME OF SALE

THURSDAY, MAY 28, 1987
PARK STOCK YARDS
CATTLE AND CALVES
WEIGHED AT TIME OF SALE

THURSDAY, MAY 28, 1987
PARK STOCK YARDS
CATTLE AND CALVES
WEIGHED AT TIME OF SALE

THURSDAY, MAY 28, 1987
PARK STOCK YARDS
CATTLE AND CALVES
WEIGHED AT TIME OF SALE

THURSDAY, MAY 28, 1987
PARK STOCK YARDS
CATTLE AND CALVES
WEIGHED AT TIME OF SALE

THURSDAY, MAY 28, 1987
PARK STOCK YARDS
CATTLE AND CALVES
WEIGHED AT TIME OF SALE

THURSDAY, MAY 28, 1987
PARK STOCK YARDS
CATTLE AND CALVES
WEIGHED AT TIME OF SALE

(COMPARED TO LAST WEEK)
Slaughter cows and bulls 1,000-2,000
higher, slaughter calves and vealers
steated, feeder steers steady,
medium-framed steers to 200 higher,
medium-framed steers to 200 higher,
medium-framed steers to 200 higher.

THURSDAY, MAY 28, 1987
PARK STOCK YARDS
CATTLE AND CALVES
WEIGHED AT TIME OF SALE

THURSDAY, MAY 28, 1987
PARK STOCK YARDS
CATTLE AND CALVES
WEIGHED AT TIME OF SALE

THURSDAY, MAY 28, 1987
PARK STOCK YARDS
CATTLE AND CALVES
WEIGHED AT TIME OF SALE

THURSDAY, MAY 28, 1987
PARK STOCK YARDS
CATTLE AND CALVES
WEIGHED AT TIME OF SALE

THURSDAY, MAY 28, 1987
PARK STOCK YARDS
CATTLE AND CALVES
WEIGHED AT TIME OF SALE

THURSDAY, MAY 28, 1987
PARK STOCK YARDS
CATTLE AND CALVES
WEIGHED AT TIME OF SALE

THURSDAY, MAY 28, 1987
PARK STOCK YARDS
CATTLE AND CALVES
WEIGHED AT TIME OF SALE

THURSDAY, MAY 28, 1987
PARK STOCK YARDS
CATTLE AND CALVES
WEIGHED AT TIME OF SALE

THURSDAY, MAY 28, 1987
PARK STOCK YARDS
CATTLE AND CALVES
WEIGHED AT TIME OF SALE

(COMPARED TO LAST WEEK)
Slaughter cows and bulls 1,000-2,000
higher, slaughter calves and vealers
steated, feeder steers steady,
medium-framed steers to 200 higher,
medium-framed steers to 200 higher,
medium-framed steers to 200 higher.

THURSDAY, MAY 28, 1987
PARK STOCK YARDS
CATTLE AND CALVES
WEIGHED AT TIME OF SALE

THURSDAY, MAY 28, 1987
PARK STOCK YARDS
CATTLE AND CALVES
WEIGHED AT TIME OF SALE

THURSDAY, MAY 28, 1987
PARK STOCK YARDS
CATTLE AND CALVES
WEIGHED AT TIME OF SALE

THURSDAY, MAY 28, 1987
PARK STOCK YARDS
CATTLE AND CALVES
WEIGHED AT TIME OF SALE

THURSDAY, MAY 28, 1987
PARK STOCK YARDS
CATTLE AND CALVES
WEIGHED AT TIME OF SALE

THURSDAY, MAY 28, 1987
PARK STOCK YARDS
CATTLE AND CALVES
WEIGHED AT TIME OF SALE

THURSDAY, MAY 28, 1987
PARK STOCK YARDS
CATTLE AND CALVES
WEIGHED AT TIME OF SALE

THURSDAY, MAY 28, 1987
PARK STOCK YARDS
CATTLE AND CALVES
WEIGHED AT TIME OF SALE

THURSDAY, MAY 28, 1987
PARK STOCK YARDS
CATTLE AND CALVES
WEIGHED AT TIME OF SALE



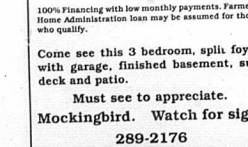
Scotts Mark Hamon and Brent Gaunce are pictured with a size stretcher of fish caught during a recent outing of Boy Scout Troop 50...



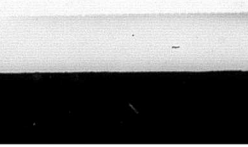
Renee Lincoln and Edna Weaver perform during the Memorial Day Weekend Celebration held in Carlisle, Saturday May 23...



Renee Lincoln and Edna Weaver perform during the Memorial Day Weekend Celebration held in Carlisle, Saturday May 23...



Renee Lincoln and Edna Weaver perform during the Memorial Day Weekend Celebration held in Carlisle, Saturday May 23...



Renee Lincoln and Edna Weaver perform during the Memorial Day Weekend Celebration held in Carlisle, Saturday May 23...

Estate Auction Saturday, June 6 10:00 a.m. Located 14 miles from Carlisle, 7 miles from Morefield on the Millston Road.

EARL HAMM, Auctioneer Mark Mattox, Auctioneer and Real Estate Broker

Property Listings 12 room house with 2 baths on corner lot. Has large guest house and garage. In town.

For Sale EARLISE: Productive business with growth potential, excellent location.

OPEN HOUSE Sunday, May 31 12:00 p.m. to 5:00 p.m. 100% Financing with low monthly payments.

Bill Kuchler Real Estate Broker & Auctioneer Phone 606-763-6140 or 606-763-6211

AUCTION Saturday, June 6 10:30 a.m. Located in Georgetown town in Millington, KY.

EARL HAMM, Auctioneer Mark Mattox, Auctioneer and Real Estate Broker

New Listings 118 acre - Saltwell Road - tobacco farm, 1,225 lbs. tobacco base.

EARL HAMM, Auctioneer Mark Mattox, Auctioneer and Real Estate Broker

PUBLIC AUCTION Sat., May 30, 1:00 P.M. Location: Crawford Farm Supply building

WATER WELL DRILLING Cable rigs only (The drill most preferred for shallow water well)

Slade Meat Packer 318 W. Pearl St. Cynthia, Ky. For that troublesome Bull or Broken-Legged cow, we can HELP YOU.

Bill Kuchler Real Estate Broker & Auctioneer Phone 606-763-6140 or 606-763-6211

FOR SALE Good used automobile 1981 Ford, 14, 14, 14, all time guaranteed.

FOR RENT 1000 sq. ft. apartment - 5 rooms, second floor, 101 South Broadway, \$295.00, incl. utilities.

NOTICE All persons are hereby notified to show up for the liquidation of the assets of the partnership.

Slade Meat Packer 318 W. Pearl St. Cynthia, Ky. For that troublesome Bull or Broken-Legged cow, we can HELP YOU.

WATER WELL DRILLING Cable rigs only (The drill most preferred for shallow water well)

Slade Meat Packer 318 W. Pearl St. Cynthia, Ky. For that troublesome Bull or Broken-Legged cow, we can HELP YOU.

WATER WELL DRILLING Cable rigs only (The drill most preferred for shallow water well)

Slade Meat Packer 318 W. Pearl St. Cynthia, Ky. For that troublesome Bull or Broken-Legged cow, we can HELP YOU.

Mercury Magic Means Fun for You! Own your own apparel or shoe store.

FOR RENT 1000 sq. ft. apartment - 5 rooms, second floor, 101 South Broadway, \$295.00, incl. utilities.

FOR RENT 1000 sq. ft. apartment - 5 rooms, second floor, 101 South Broadway, \$295.00, incl. utilities.

FOR RENT 1000 sq. ft. apartment - 5 rooms, second floor, 101 South Broadway, \$295.00, incl. utilities.

FOR RENT 1000 sq. ft. apartment - 5 rooms, second floor, 101 South Broadway, \$295.00, incl. utilities.

FOR RENT 1000 sq. ft. apartment - 5 rooms, second floor, 101 South Broadway, \$295.00, incl. utilities.

FOR RENT 1000 sq. ft. apartment - 5 rooms, second floor, 101 South Broadway, \$295.00, incl. utilities.

FOR RENT 1000 sq. ft. apartment - 5 rooms, second floor, 101 South Broadway, \$295.00, incl. utilities.

FOR RENT 1000 sq. ft. apartment - 5 rooms, second floor, 101 South Broadway, \$295.00, incl. utilities.

CLASSIFIED EVERYBODY'S MARKETPLACE Crossword

Mercury Magic Means Fun for You! Own your own apparel or shoe store.

FOR RENT 1000 sq. ft. apartment - 5 rooms, second floor, 101 South Broadway, \$295.00, incl. utilities.

FOR RENT 1000 sq. ft. apartment - 5 rooms, second floor, 101 South Broadway, \$295.00, incl. utilities.

FOR RENT 1000 sq. ft. apartment - 5 rooms, second floor, 101 South Broadway, \$295.00, incl. utilities.

FOR RENT 1000 sq. ft. apartment - 5 rooms, second floor, 101 South Broadway, \$295.00, incl. utilities.

FOR RENT 1000 sq. ft. apartment - 5 rooms, second floor, 101 South Broadway, \$295.00, incl. utilities.

FOR RENT 1000 sq. ft. apartment - 5 rooms, second floor, 101 South Broadway, \$295.00, incl. utilities.

FOR RENT 1000 sq. ft. apartment - 5 rooms, second floor, 101 South Broadway, \$295.00, incl. utilities.

Mercury Magic Means Fun for You! Own your own apparel or shoe store.

FOR RENT 1000 sq. ft. apartment - 5 rooms, second floor, 101 South Broadway, \$295.00, incl. utilities.

FOR RENT 1000 sq. ft. apartment - 5 rooms, second floor, 101 South Broadway, \$295.00, incl. utilities.

FOR RENT 1000 sq. ft. apartment - 5 rooms, second floor, 101 South Broadway, \$295.00, incl. utilities.

FOR RENT 1000 sq. ft. apartment - 5 rooms, second floor, 101 South Broadway, \$295.00, incl. utilities.

FOR RENT 1000 sq. ft. apartment - 5 rooms, second floor, 101 South Broadway, \$295.00, incl. utilities.

FOR RENT 1000 sq. ft. apartment - 5 rooms, second floor, 101 South Broadway, \$295.00, incl. utilities.

FOR RENT 1000 sq. ft. apartment - 5 rooms, second floor, 101 South Broadway, \$295.00, incl. utilities.

FOR RENT 1000 sq. ft. apartment - 5 rooms, second floor, 101 South Broadway, \$295.00, incl. utilities.