

SCHOOL

HONOR ROLL

Grade 10

- 4. Heather Hall, David Sparks
- 5.2 Tamie Gray, Emily McMillen, Miss Villard
- 5.7 Melody McClure
- 5.8 - Alexa Estie, Joshua Guhrig, Janie Halway, Martha Livingston, Mike Norken
- 5.9 Cynthia Fryman

Grade 11

- 4.6 - Sarah Elliott, Mary Fench, Lee Harlin
- 5.3 - Mary Deaton, David Miller, Michelle Haveson, Becky Jones, Gretchen Judge, Pam Leavitt
- 5.4 - Andy Anderson, Julie Clark, Rhonda Curran, Cam Griffith, Bonnie Jolly, Leslie Lutes, Cindy Miller
- 5.5 - Cindy Clark

Grade 12

- 4.0 - Carol Reed, Tracy Deaton, Susya Johnson, Donna McCard, Tina Mitchell, Lisa Noss
- 5.8 - Patrick Dale, Kevin Higgins, Joe Joseph, Michelle Lett, Tim Pope, Rhonda Smart, Eric Suddler
- 5.9 - Billy Gilvin, Rita Leat, Shawn Tawney

Grade 13

- 4.0 - Annette Hunt, Lynn Reynolds
- 5.8 - Tamia Anderson, Patty Browning, Pam Fryman, Tracy Hillary, Bryan Johnson, Linda Parrell, Suzanne Smith
- 5.7 - Barbara Handfield
- 5.6 - Esther Gilliam, Melody Hammans, Cindy Hamon, Kelly Hawkard, Anna Lavette, Leslie Thornton
- 5.5 - Ron Allison, Nikki Earley, Renee Roetz Moss

School menus

March 26-April 3

ELEMENTARY
 Breakfast: Monday, juice, oatmeal, milk; Tuesday, juice, oatmeal, milk; Wednesday, cereal, milk; Thursday, apple sauce, milk; Friday, juice, honey bun, milk.
 Lunch: Monday, chili, string cheese, french fries, lettuce salad, coffee, milk; Tuesday, chili, string cheese, french fries, lettuce salad, coffee, milk; Wednesday, pizza, chicken, milk; Thursday, pizza, chicken, milk; Friday, fish on bun, potato, lettuce, cold tomatoes, fruit, milk.
INTERMEDIATE
 Monday, chicken, patie, green beans, salad with cheese; Tuesday, steak and gravy, mashed potatoes, buttered peas and carrots; Wednesday, pizza, tossed salad, apple; Thursday, hamburger, french fries, lettuce/tomato/pickles; Friday, spaghetti sauce with meat, potato chips, peas, fruit and ice cream.

EKU's alumni gives big

EKU alumni pledged \$22,215, exceeding the 1986 original goal of \$10,000. Gifts received during the pledging are primarily unrestricted and will be used where the need is greatest, she said. "Once again, the phomotion provided a meaningful experience for everyone involved," Shurtliff said. "The effort raised funds to enhance University programs, provided an exceptional learning experience for students, and generated a tremendous response from the local business community."

Guthrie pledges at Centre

Matthew Guthrie, a freshman from Carlisle, has pledged a fraternity at Centre College in Danville. Guthrie, the son of Mr. and Mrs. Bill Guthrie of Elm Street, has pledged the Phi Kappa Tau fraternity.

MSU to hold open house

Morehead State University will hold its final open house of the spring semester, Saturday, March 26, to showcase prospective students with campus life. Plans for the open house include: campus and distance programs of special interest. Representatives from admissions, financial aid, housing, student development, campus organizations, and academic areas will be available to students. Registration begins at 9 a.m. in the Adson-Doran University Center.

Family Restaurant

245 East Main St. - Carlisle - Phone 289-2783
Carry-Out or Delivery Service
 Sizzling Monday, March 23
 For: Pizzas, Stromboli Sandwiches, Hoagies & Short Orders
 *Minimum Order: \$5.00
 *Maximum Order: \$50.00
Friday Night, Mar. 27 Special
 Frog Legs or Shrimp, Choice of Baked Potato or French Fries, Homemade Cole Slaw & Bread Stick. \$4.50

"Quality and energy efficiency. That's why my customers choose Wise Choice Homes."

- Ed Kleier, a Kentucky builder

Home buyers today are more interested in energy costs than they used to be. That makes a Wise Choice Home their best deal. Wise Choice Homes feature quality construction, with plenty of insulation and other energy saving features. And they have safe, clean, comfortable electric heat. Not only that - when a customer is trying to qualify for a loan, energy efficiency makes a difference. The low energy costs of a Wise Choice Home make it easier to qualify. When you see the Wise Choice Home sign in the yard, you know it's a sign of comfort, economy and value.

KENTUCKY POLYPIPS COMPANY

COMFORT - ECONOMY - VALUE

another WISE CHOICE HOME



These Nicholas County Elementary School students participated in the Kentucky Education Association spelling bee at the elementary school on Wednesday, February 11. Winners will advance to the district competition to be held in Lexington on March 1, 1987. Pictured are (front, left): Marissa Cline, Melissa Mendeny, Paris Pope, Maely Abner and James Amburgy; back row, left: Angie Brist, Mike Cain, Zoi Harlin, Angie Hill and Jeremy Harvatt. - see page 10.

THE RALLYING FORCE

Now is the time to take your stand for America's future. By joining the VFW now you'll become a force in the fight for veterans' rights and a voice in support of a strong democratic America. It's an idea whose time has come. Join your local VFW Post today.

LERMANS CASH ONLY. No Layaways. at these Sale Prices... please

KNOWN FOR BETTER VALUES

3 BIG SALE DAYS!

20% OFF!

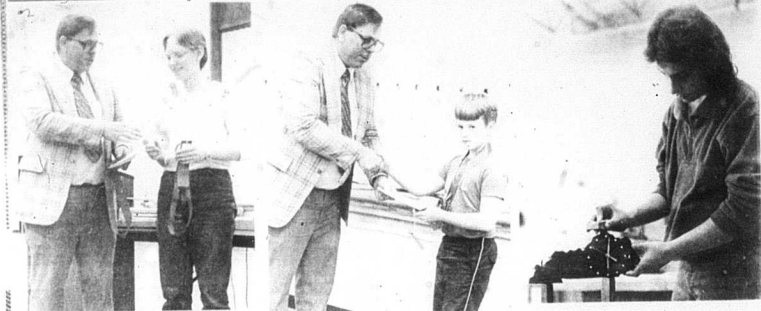
DENIM MDSE. not included. SHOP ALL DEPT'S. for great savings!

SALE EFFECTIVE THURS., FRI., SAT., MAR. 26, 27, 28

CHOOSE EARLY for best selection

LERMANS KNOWN FOR BETTER VALUES

SCHOOL



The Over-all winner in the Biological Sciences Division of the Nicholas County Elementary School Science Fair held on March 18-20, was eighth grade student Debbie Pock. The Over-all winner in the Physical Sciences division of the Nicholas County Elementary School Science Fair... see page 10.

Mike Booth, son of Mr. and Mrs. Herbert Booth was the over-all winner of the Physical Science division of the Nicholas County Elementary School Science Fair... see page 10.

Nicholas County High School student George Ishmael shows the clock that he made as a project in Jim Simon's industrial arts class. The clock is an outline of the Commonwealth of Kentucky... see page 10.

For Mercury Magic Super Shopping Savings, Shop These Businesses!

West End Market
 Ky. Hwy 36

OWNERS: Freda and Allen Sparks

WE FEATURE:

- * Shell Gasoline: SU 2000, Shell's Super Unleaded Gasoline, plus Shell Oil Products, Anti Freeze, etc.
- * Small Selection of Groceries, Picnic Items & Lunch Box Fillers.
- * Store Hours: 6 A.M. to 10 P.M. Mon. thru Sat. Sundays 8 A.M. to 10 P.M.

"We have been serving the Nicholas County area for the past 5 years, and look forward to continuing that service."

* Come in and let Freda, Allen, Allen, Roy, Jean Ellen and Hester serve you!

West End Market, one mile west of Carlisle on Ky. 36 is a full service gas and food market. West End is owned and operated by Freda Sparks and her husband, Charles Allen Sparks. They have been in business for five years, opening April 5, 1982. West End sells Shell gasoline, oil and other Shell products served by Cox Oil Service, groceries, sundries, hot sandwiches and pizza. There are five employees to serve you. According to Sparks, "Our goal in business at West End Market is to be able to serve the people of Carlisle and Nicholas County with fast and courteous service. With Cox Oil Service as our provider, we hope to be able to grow with the future and continue to serve our many faithful customers the very best way!" Business hours are 6:00 a.m. to 10:00 p.m. 6 days a week. Sunday 8:00 a.m. to 10:00 p.m.

Now 2 color prints FOR THE PRICE OF ONE

Bring in a roll of Kodacolor Film for developing and printing and receive 2 sets of COLOR PRINTS FOR THE PRICE OF ONE. ALL SIZES. At time of original order only.

Carlisle Drug Co.
 THE PHARMACEUTICAL STORE
 CARLISLE, KY.

WE'RE MAKING THE BEST HOME LOANS IN THE COUNTRY

RURAL HOME LOANS FROM FARM CREDIT.

Check for the...
 * Long-term interest rates.
 * Low down payment requirements.
 * Flexible repayment schedules.
 * No prepayment penalties.
 * Free closing costs.

...and you'll have the best financing in KY!
 * No hidden charges.
 * No hidden fees.
 * No hidden costs.
 * No hidden charges.
 * No hidden fees.
 * No hidden costs.

FARM CREDIT SERVICES
 Together, We've Formed A New Asset For Agriculture.

So, Contact Us: Carlisle - Phone 289-2228
 John P. Fry, Branch Manager
 Monte Conrad, Loan Officer
 Brenda Berry, Loan Officer
 Charlotte Snapp, Office Assistant

IGA Customer Service

If you've ever tried to carry a couple of bags of groceries, a purse and a child to your car in a supermarket parking lot, you'll really appreciate IGA's Carry-Out Service. No order is too large or too small. We'll take your purchase to your car, rain or shine!

We think you deserve that kind of service...

WE WANT YOU TO BE SATISFIED.