



The Carlsle Mercury

Serving Nicholas County Since 1867

120th Year, No. 29

Carlsle, KY 40311-0272

Thursday, July 16, 1987

40 cents per copy

JUL
16
1987

Fiscal court says no to creation of board for levy of new tax

By Marsha Livingston of the Carlsle Mercury staff

A motion made by Magistrate Oville Atkinson to create a county extension district board for Nicholas County failed to get a second at the July 15 meeting of the Nicholas County Fiscal Court.

Jim Caswell, a lead farmer and spokesman for a group of concerned homemakers, farmers and county extension employees, and Bob Herbst, area extension director for University of Kentucky College of Agriculture, had proposed the plan at the June 17 meeting of fiscal court to elect the board, which would be responsible for setting a tax rate to raise funds for operation of the county extension service.

Caswell and Herbst told the court a tax of four cents (4¢) per \$100 property valuation would be necessary to raise sufficient revenue, generating about \$46,000, at the June presentation.

Following discussion and comments from supporters of the proposal at the June meeting, Nicholas County Judge Executive Reese Bissett told the group the court would consider the proposal and vote on it at the July 8 meeting. Last Wednesday, before making

the motion to appoint the tax board, Atkinson asked Bissett if he would attend the appointment, which would create the new taxing agency.

"No, I don't," Bissett answered. Before moving on to other business, Magistrate Floyd Russell requested permission from court to give an explanation of his reasons for not voting for the appointment.

Russell explained court will not know until possibly January if the payroll tax passed at the April 1 meeting of fiscal court is declared unconstitutional.

"With the payroll tax and an extension tax, I feel we would be double taxing the people of Nicholas County," Bissett said.

"We're not against the county extension service. It's still in the budget for six more months," he continued.

"I just feel we should wait until January to vote on appointing a county extension board.

"I'm not saying we don't need the tax, but now is not the time," Bissett concluded.

"I feel the same way," Bissett said. "I can't see double taxing the people," he added.

Atkinson said he felt like court will have the same problem in January.

Magistrate Melvin Fryman agreed with Bissett and Russell.

"I have had only one call from the people in my district supporting the tax," Fryman said.

"That means there are about 50 people against it.

"I have to live with those people and I have to work with them.

"I'm not against the extension of the tax, but the people just don't want more taxes," Fryman concluded.

"Those people don't want the tax because they don't use the extension services," Atkinson maintained.

"We're not against the service," Magistrate Lee Plank said.

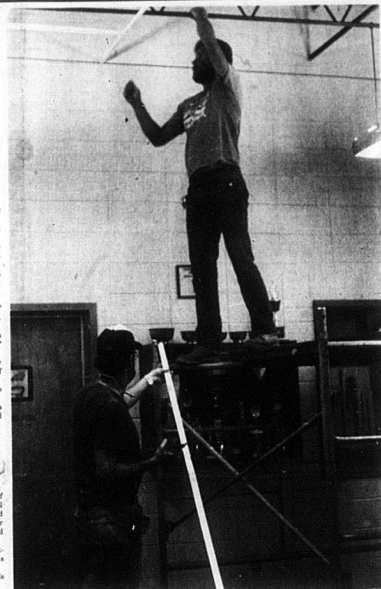
"The county extension service is in the budget for six more months," Plank added.

As an interested citizen, Rodney Strunk spoke up on the behalf of the county extension service.

"I'm not a farmer. I'm just here to support an extension office.

"I have had a problem with pests in my orange grove, and I called the extension office.

Continued on Page 2



Bob Banta, on the floor, and Bobbie Edwards of H&B Remodeling, are in the process of installing a drop ceiling in the hand room at Nicholas County High School. This is one of the projects planned for the summer to be completed by the time school opens August 18. - Bill Gustin Photo.

N. C. School Board approves purchase of new computers

By Hank Bond

The Nicholas County Board of Education has approved the purchase of 11 IBM Personal System II computers, as in total including software, will be used by lower level elementary students in the system's writing to read program.

The price was greater than the \$11,021 expected by the board, however according to Nicholas County Superintendent Don Elder, the price has been increased.

"In the past we were expecting to purchase PC's, however I have since found out those aren't available next year. We might not even be able to get them this year. The new computers have much more memory and will add a great deal to our program.

"I was up there (at the elementary school) last year and watched these programs. The results were unbelievable.

"If our kids are going to keep up with other kids in other school systems, that's something we're going to have to do."

The board also approved a computer enrichment exercise for grades four through six titled Farm & Food Styles. According to Elder this will be at no charge to the school system.

The board tabled a plan to employ Simplex to install automatic smoke detectors at Nicholas County High School. The projected cost is \$40,000. Members agreed to consider the request at next month's meeting, when additional information on the actual plan of installation is available.

In other action the board amended the school's attendance policy.

agreed to participate in the Sentenced to Read program administered through the court system. Vickie Fleming will again be responsible for the program.

approved the duties of the Chapter I coordinator.

authorized payment of an additional \$200 to James Lane for his duties as assistant high school principal. His name had not been included in the list for the last meeting.

approved the use of the elementary school for night.

Council holds line on tax rate with repeat of 1986's figures

By Jackie B. Duncan

Carlsle City Council members voted Monday night at its regular meeting to leave the city tax rate the same as last year which is 23 cents per \$100 valuation.

Council member Tommy Vaughn made the motion to "leave it as is."

Byer said Farrell Alexander had called him concerning street lights on Truman Avenue and Ardchison Avenue. Due to overhanging tree branches, light is blocked from the street. It was suggested Kentucky Utilities be informed of the situation.

Council member Jeff Tyrer suggested to reimburse bus drivers up to \$25 for physicians. This is for full-time drivers only.

agreed to offer supplemental funds of \$1,000 to the Nicholas County High School Band, and \$500 to the NCES Biology Department.

and approved applications for funds to be used in the Chapter II program, which includes the Drug and Alcohol Education Programs.

The next regular meeting of the Nicholas County Board of Education is scheduled for August 10.

Carlsle City Council members voted Monday night at its regular meeting to leave the city tax rate the same as last year which is 23 cents per \$100 valuation.

Council member Tommy Vaughn made the motion to "leave it as is."

Byer said Farrell Alexander had called him concerning street lights on Truman Avenue and Ardchison Avenue. Due to overhanging tree branches, light is blocked from the street. It was suggested Kentucky Utilities be informed of the situation.

Council member Jeff Tyrer suggested to reimburse bus drivers up to \$25 for physicians. This is for full-time drivers only.

agreed to offer supplemental funds of \$1,000 to the Nicholas County High School Band, and \$500 to the NCES Biology Department.

and approved applications for funds to be used in the Chapter II program, which includes the Drug and Alcohol Education Programs.

The next regular meeting of the Nicholas County Board of Education is scheduled for August 10.

Rain a welcome relief

By Marsha Livingston of the Carlsle Mercury staff

There is an old saying if it rains on the first day of July, it will almost rain 20 days out of the entire month.

If the first week in July is anything to go by in terms of rainfall, that old saying just might have some truth to it.

However, according to Nicholas County Extension Agent for Agriculture, Mike Phillips, Nicholas County has not yet reached the point where there has been too much rainfall.

"Peppers, corn and tobacco need rain," Phillips said.

"However, for people growing peppers, this hot, humid, rainy weather can cause a problem with bacterial leaf spotting," he added.

Phillips explained this is a fungus which like a tropical disease that causes the leaves to fall off pepper plants, allowing the sun's rays to scald the peppers, which in turn causes the peppers to fall off the plant and rot.

Phillips also said the possibility of blue mold increases in this type of weather.

"Hot, humid, rainy weather is favorable for blue mold," he said.

"It's a good idea to form a disease-resistant plant beds," Phillips explained. "For they serve as a real infection point for blue mold."

"We definitely need this rain, but it needs to be monitored," he added.

Phillips reported the tobacco crop in the general county area, with all conditions considered, is doing "pretty well."

"Stages of development for to-

Low crops differ, due to when the crops were set.

"There's more in the tobacco crops are not uniform, but are pretty good overall."

Phillips said crops of corn, for the most part, are making very good.

"Corn is getting rain at the right time," he said.

"Most crops grow well in spite of the weather conditions," Phillips added. "But we were getting to the point where we needed rain and we got it."

"And we can always bring the cornfield has less than if we need more rain," Phillips concluded.

"It's always seems to rain when we need it."

Blue Mold watch issued

A blue mold watch has been issued for horticultural producers in Eastern Kentucky.

The watch, issued by Bill Nemeth, University of Kentucky blue mold coordinator, comes after the fungus disease was confirmed in a field of early tobacco in Harlan County, Tennessee, in the northeastern part of the state.

The watch means conditions are favorable for a blue mold outbreak and that areas of the fungus are likely to blowing into the region.

Nemeth said the watch continues in effect for the following Kentucky counties:

Bill Clay, Harlan, Jackson, Knox, Laurel, Ruckersville, Whitley, Breathitt, Knott, Lee, Letcher, Leather, Owsley, Perry, Wolfe, Bath, Branch.

Also, Fleming, Lewis, Mason, Menifee, Montgomery, Morgan, Robertson, Rowan, Scott, Carter, Elliott, Floyd, Greenup, Johnson, Lawrence, Magoffin, Martin, and Pike.

"Growers should realize that tobacco plants are very susceptible to blue mold when they are growing rapidly. Frequent shade-rains and high relative humidity have provided adequate night-time moisture for infection to take place when the spores of the fungus are present," Nemeth said.

Producers should monitor their fields for signs of blue mold activity.

Old plant bed sites should be destroyed as soon as possible, because they provide the best growing grounds for the disease.

Any suspected cases of blue mold should be reported to the county Extension agent for agriculture immediately for positive identification.

SAVE MORE THAN \$15.00
From Carlsle Merchants
See Page 3
Chip & Save

County Extension
289-2312