



# The Carlisle Mercury

Serving Nicholas County Since 1867

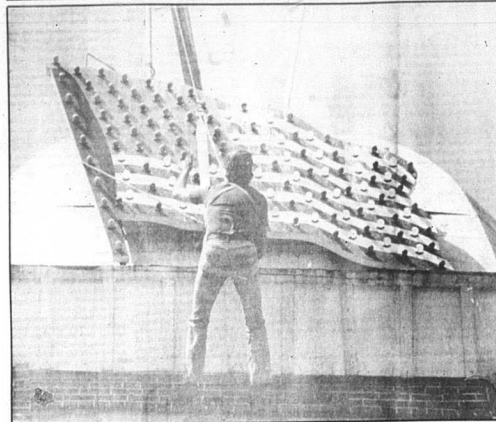
120th Year, No. 27

Carlisle, KY 40311-0272

Thursday, July 2, 1987

40 cents per copy

JUL  
2  
1987



## Helping Old Glory Shine Bright!

John Burke, a member of the Carlisle - Nicholas County Chamber of Commerce and an employee of Kentucky Utilities replaces the bulbs in Old Glory high atop the Nicholas County Courthouse, Saturday afternoon. Burke received assistance from Doug Garrett, Jeff Tyrer, Allen Earlywine and others for the project. The lights will be shining brightly this Fourth of July. - Staff Photo.

## City employees to get 8 percent pay increase Council rejects KML plan

**By Janis R. Duncan**  
The Carlisle Mercury staff  
All Carlisle city employees, with a year or more tenure with the City of Carlisle will receive an 8 percent pay raise, effective July 1.

In special session Tuesday night it took two votes to approve the raise to be only 5 percent, however Carlisle Mayor Lee Bantz (ranked 2-0) deadlocked with a no vote.

Jeff Tyrer and Barry Bantz, council members, cast the no votes, voting instead for a higher increase.

The city budget, which had been approved, allowed for an increase as a 15 percent increase, however those wanting a more than 5 percent increase said it would be a step backwords from the 8 percent allowed last year.

"There's no way we (council) can pay them what they're worth," councilman Bobby Barnett said.

Barnett said a 5 percent increase across the board, excluding the fire department, would represent an increase of about \$11,000 over last year's wages paid by the city. The fire department is also scheduled for an increase, but the amount was not included in Vaughn's working figure.

In breaking the tie vote, Bantz said, "I agree with all four of them. Apparently feeling an increase is necessary, however, you all have good points, but I don't want to go backwords."

Tommy Crawford, a city employee I thank you."

During a second motion, the one which allowed the 8 percent increase, council member Clarence

could cast the lone no vote.

Council members Tommy Vaughn and Carroll Lester were not present.

**Charter House coverage maintained**  
Although the city had renewed liability coverage from a policy offered by the Kentucky Municipal League (KML), council voted 4-0 to maintain the city's present policy.

Written locally by M.C. Blair Insurance, and underwritten by Charter House, a proposal from the company showed the premium for 1987 will be less than last year.

Charter House representative Buddy Blatts appeared before the special session and explained the company's plan versus the pool type plan offered by the KML.

"With our company's program, you have a local agent a phone call away. He's there when you need him. You can walk across the street when you need him," Blatts said.

Both policies offer coverage for public officials, law enforcement, general liability, auto liability collision and comprehensive.

In comparing the insurance coverage, Blatts explained, KML's total coverage is for \$1 million, but it is one area or more.

The Charter House policy stipulates coverage of \$1 million per incident, with no maximum number of areas.

The \$28,425 the city will pay includes the Charter House policy, plus a policy from The Hartford coverage on three tractors and five engines and a U.S. 68 policy through Charles M. Cox Insurance Agency, covering dump trucks, pick-ups and trailers.

The KML policy would have continued on Page 14

## Neither rain nor sleet has stopped Snapp

**By Marsha Livingston**  
Of the Carlisle Mercury staff  
After 28 years with the United States Postal Service, Gene Snapp has worked nearly every position from custodian to Postmaster.

Snapp has been Postmaster of the Carlisle branch post office since John Anderson's retirement in 1964.

"A postmaster does a little bit of everything," Snapp explained.

"I help distribute mail and see that it is delivered on time. I am in charge of stamp accountability and seeing that all revenues for the office are balanced and collected."

"Actually, I'm in charge of the total operation of the post office," Snapp said.

Snapp was born and raised in Nicholas County, except for a short period of time.

"I spent some of my younger years in Bourbon and Clark counties," he said.

Snapp moved back to Nicholas County in 1940, spending some time with the United States Army from 1943 to 1945.

Snapp married his wife, Louise, in 1946 and "mostly farmed" until 1950, when he began as a part-time custodian for the Carlisle branch post office.

He also did some part-time carpenter work, measured tobacco, and worked for Crickets and Gunson (grocery store) while it was still located on Main Street," Snapp explained.

Snapp said that while working as part-time custodian at the post office, he also worked as a substitute mail carrier on rural routes too.

He was appointed as substitute clerk carrier in November, 1960.

During this time, he carried mail on city routes and worked part-time as a clerk in the office.

Around 1964, Snapp was appointed register clerk, distributing mail and waiting on customers at the window.

He was appointed assistant Postmaster in 1966.

"I still did clerical work," Snapp said. "But I also filled in for the Postmaster when necessary."

After Anderson's retirement in August, 1984, a process of selecting a new Postmaster was necessary.

Even though Snapp was as-

istant Postmaster for 18 years, his appointment as Postmaster was not automatic.

The vacancy was posted in need and class post offices throughout Kentucky, Ohio and Indiana.

Each applicant is screened, and a package of three or more names is put together from which to select the Postmaster.

Even though Snapp's position as Postmaster was not automatic, the addition of his name to this package was.

He was appointed Postmaster in November, 1984.

Snapp and his wife have two sons, Gayle and Bobby, and five grandchildren.

Another son, David, passed away in 1981.

Snapp and his wife live at 645 Upper Jackstown Road.

Of course, with every postal employee, there is a story concerning a mail carrier's worst enemy: the dog.

"The worst dog I encountered belonged to a family on Symonsville Hill," Snapp said.

"It didn't like mailmen or garbage men, and you literally had to fight your way up the street," he said.

Another enemy to mail carriers, and nearly as vicious, is Old Man Winter.

"I've carried mail in 30 degrees below zero weather," Snapp remembered.

Other employees at the Carlisle branch post office are:

Marion Sims and Charles Watkins, part-time clerks; Frankie Hughes, full-time clerk; Ann Jolly, part-time carrier; Mark Vico, carrier; Charles King, carrier; Chester Mattox, Calvin Wills, Edgar Allen, Dorell, David Durrell, rural route carrier; and Judy Sanders, custodian.

Substitute rural route carriers are Franklin Jolly, Cliff Vico, Biggs Jolly and Gary Howard.

"They are a good bunch of employees," Snapp said of his staff.

A framed composite hanging in Snapp's office displays photos of Postmasters at the Carlisle branch post office for many years past and the year they became Postmaster.

Included in the composite are John Anderson (1940); E. E. Poston (1952); Howard R. Vach (1943);

Continued on Page 14



Gene Snapp



Kentucky State Trooper William Hantz of the Kentucky State Police investigated an injury accident involving this 1976 Dodge operated by Charles Ackman, 71, Mayeville. The accident occurred 11:45 a.m., June 27, took off three-tenths miles west of Carlisle on U.S. 68. The other driver involved, Alger Bowen, 48, Harrodsburg, operating a 1979 Ford, was treated and released for broken hand and head injuries. Ackman was taken to Mayeville Hospital with a broken pelvis. - Staff Photo.

## Double Trouble on U.S. 68

Two tractor trailers occurred within hours of each other Tuesday afternoon in a curve on U.S. 68 about seven miles north of Carlisle. Although complete details were not available at press time, two people were injured in the first mishap. The driver sustained at least cuts to the face, while a passenger was reported to have received some broken ribs and a broken arm. The driver of the second vehicle was also transported to the hospital, however information on his condition was not available. Members of the Nicholas County Ambulance Service, the Nicholas County Sheriff's office, state police and the Nicholas County Volunteer Fire Department responded to the accidents. - Staff Photo.

