

**BUSINESS PROFILES**

**Linnvilles still doing strong business on Main Street.**

By Heather Mathas  
Despite discouraging sales predictions for the Christmas holidays by large retailers, local business persons seem to be in good shape for the season.

One such business is Linnville's, owned and operated by Jerry and

Linda Linnville on Main Street of Carlisle.

Christmas, compared to previous years enthusiasm," said Jerry. "Normally it takes a year or a little longer for a small town like Carlisle to feel the effects of a stock market downturn or other big events."

But really, how many people in Carlisle have the kind of extra money to invest in the stock market that would be affected?"



Lisa Fryman, Linnville's daughter, stands behind Linnville Department Store. (Heather Mathas Photo)

**Kentucky jobs and earnings reached record highs in 1987, according to state official**

**All-time records set in specific categories**

The past year has been a good economic year in Kentucky, as jobs and wages reached record highs, according to Ed Blackwell, the state's chief labor market analyst.

October figures placed non-farm employment at an all-time high of 1,225,000, following earlier records in this category during May and September.

"We expect this figure to be even higher when we receive information from more employers," Blackwell said. "Our estimates also show another 66,600 Kentuckians were working full time in October in agriculture, manufacturing and service industries."

1987 also saw all-time records set during the year in specific employment categories such as service/retail and local education; state and local government; transportation, communications and utilities, and finance, and

insurance and real estate. "Reports from some 66,000 employers indicate wages paid in Kentucky workers during 1987 should exceed \$2.6 billion, an increase of \$1.3 billion over wages paid last year in the state," he said. Based on an average monthly employment of 1,225,331, these workers would earn an average \$1,471 a month in 1987. That doesn't include most income from agricultural jobs or self-employment.

"When this money is circulating in the state's economy, it increases the demand for goods and services, which stimulates job growth," Blackwell pointed out. "Kentucky's broad employment base as a stabilizing factor during recessionary periods."

A diversified economy such as ours provides a safeguard during an extended economic downturn when specific industries, like oil mining and manufacturing, are affected the most," he said. Trade, service and

manufacturing continue to dominate Kentucky's employment picture in 1987, accounting for about 65 percent of the state's jobs.

Blackwell said the biggest jump in the past year came in service jobs, which increased by 14,000 between January and October. "People often think of low-paying jobs when services are mentioned," he said. "But this group of workers includes accountants, attorneys and health care workers, such as doctors, dentists and nurses—people who are in higher income brackets. So service jobs play a major role in boosting our economy."

These Kentucky workers earned an average \$13.08 an hour, compared to \$8.58 for the region and \$9.72 for the nation. Despite a shorter work week (40.3 hours for Kentucky, compared to 41.9 hours for the southeast and 40.7 hours nationally), the state's factory production workers had average weekly earnings of \$406.52, compared to \$345.58 for the region and \$395.60 nationwide.

Wholesale and retail trade still accounts for most of Kentucky's jobs—407,106 in October—but growth in this area lagged behind that recorded in the services and manufacturing segments.

"More jobs in one category have a ripple effect, creating the need for more workers in other areas," Blackwell said. "When more people are working, consumer spending is up, and the trade sector is one of the beneficiaries."

**Area dealer honored at conference**

Mr. and Mrs. Jerry Hunt of Sharpsburg, Kentucky, recently attended the DEKALB-SPIZER GENETICS Winner's Circle Conference in Cincinnati, Ohio.

DEKALB-SPIZER GENETICS conducts seed research at 22 stations across the United States and operates seed production plants at 22 locations. The company is an international researcher, producer and marketer of corn, sorghum, soybeans, and alfalfa seeds.

Have a safe and happy New Year

West End Market

**READ TO YOUR CHILD FOR THE FUN OF IT**

**Notice**  
The Nicholas County Courthouse will be closed on January 1, 1988 and will not reopen until Monday, January 4, 1988.

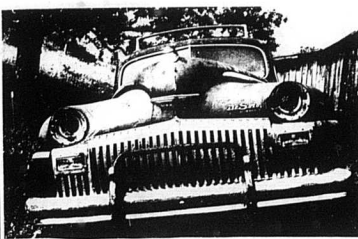
Published in The Carlisle Mercury, Thursday, December 16, 1987.

**Best Wishes**  
The sky's the limit in 1988! May it hold many good things for you!

Reese Smoot  
Nicholas Co.  
Judge/Executive

**Carlisle Drug Co.**  
THE CARLISLE STORE  
CARLISLE, KY.

**TIME TO TRADE?**



We can help with a new or used car loan. See us before you buy.

First National Bank of Carlisle



MEMBER FDIC

**PIC-PAC SUPERMARKETS**

CARLISLE PIC-PAC

Hours: Monday - Thursday 8-8  
Friday - Saturday 8-9  
Sunday Noon - 6 p.m.

World's largest Christmas Stocking Winner: Laura Bromagen

\$100 Payroll Winners: Diane Willis, Allie Tapp

Open New Year's Day

Prices good thru Sun., Jan. 3, 1988.

Hyde Park White Bread 6 oz.	3/100
Hyde Park Whole Milk 64 oz.	1.79
Hyde Park Pinto Beans 4 lb.	1.19
Fischer's Lard 25 lb. pail	9.99
Martha White or Gilt Edge Floor 25 lb.	3.99

Pepsi & Pepsi Products  
Coke & Coke Products, 1 to the bottle.....79

HYDE PARK SUGAR 149

18 OZ. REG. OR QUICK COOK  
Quaker Oats 119

LUCKS BEANS 3/129

8 OZ. HYDE PARK POTATO CHIPS .69

HYDE PARK BISCUITS 69

3 LB. CRACK SHEDD'S SPREAD 159

POT PIES 4/99

FROZEN PIZZA 99

DISH LIQUID 159

LAUNDRY DETERGENT 199

FREE!

**THE Meat Market.**

U.S.A. CHOICE CHUCK ROAST 149

FRESH SLICED QUARTER PORK LOIN 109

Center Rib Steak 299

Butterfly Pork Chops 329

Neck Bones 39

Smoked Jowl Bacon 69

Smoked Pork Hocks 89

Boneless Chicken Breast 289

HOLLY FARMS Mixed Fryer Parts .49

GROUND CHUCK 149

CHICKEN NUGGETS 229

LI'L' Cocktail Smokies 229

LI'L' Cocktail Wieners 229

Quarter Pound Beef Patties 129

Hot or Mild Sausage 129

Reg. or Polish Smoked Sausage 189

Meat Wieners 109

Shredded Bologna 159

**FRESHEST BY A Country Mile.**

Green Onions 3/1

Fancy Lemons 6/1

Limes 4/1

White Mushrooms 99

Seedless Grapefruit 179

Ripe Bananas 3/1

Green Cabbage 19

Fresh Blackeye Peas .99

Bunch Broccoli .99

Crisp Carrots .79

**Bakery-deli.**

ROAST BEEF 4.49

CORNER BEEF 4.49

CHICKEN 1.99

CHICKEN BALLS 3.99

DINNER ROLLS 12/1

KAISER ROLLS 5/1

ROAST BEEF 4.49

CORNER BEEF 4.49

CHICKEN 1.99

CHICKEN BALLS 3.99

DINNER ROLLS 12/1

KAISER ROLLS 5/1

COUPON-COUPON-COUPON

Baby Food 5/1

WE GLADLY ACCEPT FEDERAL FOOD STAMPS