



Surprise, surprise! Nicholas County High School teacher Sue Kirby found a surprise when she returned to school last Monday. Eggs which had been using to study reproduction had hatched. Pictured above is Mark Allison, Terry Feaback and Tonya McCary show off the new arrivals.

Moisture in soil improved

Handall was received throughout the state last week but is varied greatly in intensity and duration. Some areas received as little as 0.50 inch while others over four inches. Flooding occurred in some areas with isolated areas receiving hail damage.

Soil moisture conditions were good Friday 18 percent above normal, 38 percent short, 38 percent adequate and eight percent below normal. This is a net improvement from the previous week rating.

Corn planting advanced to 88 percent complete, compared to 81 percent last year and the average of 81 percent. Of the acreage planted, about 14 percent has emerged. Early planted corn looks good, but dry conditions have restricted growth.

In very dry areas, weeds look healthier than the corn due to it being too dry for herbicides to work. The 1986 corn crop was rated as 41 percent good and two percent excellent. Soybean planting advanced to 74 percent complete as of Sunday, May 18. This compares to 14 percent last year and 19 percent for average.

Tobacco plants continue to be very uneven, thin and generally slow in their development. Statewide, 37 percent of plants in beds are under two inches, 36 percent two to four inches and 27 percent larger than four inches. Farmers have generally been watering their plant beds during the dry weather.

Farm survey announced

The Kentucky Agricultural Statistics Service announces that Kentucky farmers will be asked to participate in a nationwide survey during late May and early June. Information will be used to develop estimates of 1986 crop acreages and mid-year livestock numbers. All individual information is confidential and used only in developing official national and state estimates.

Dave Williamson, State Statistician, said that concerns about out-of-production and returns from farming continue to weigh heavily on farmer's plans this year. Production and market uncertainties highlight the need for unbiased acreage and livestock information. Farmer cooperation on the survey is the key to developing official national and state estimates.

A report on 1986 crop acreages will be available on July 11 and will also include estimates of yield and production for several small grains. Estimates of U.S. hog and pig numbers will be released on June 23, and cattle numbers on July 23.

CLASSIFIED personnel for the Kentucky office include: Fay Robinson, Kathy Hlander, Dorothy Wootley, Sue Woodall. Alder, Viola Cleaver, Burton Condon, Louise Curran, Brenda Day, Fanny Duncan, Fanny Egan, Mary Laywood, Pat Harner, Betty Guthrie, Sharon Hedges, Helen Sobe, Stephanie Woodard.

WOOD was treated for wounds at Nicholas County Hospital but left Sunday night against advice from the medical staff on duty. Duffy was assisted in the investigation by the Carlisle Police Department and the Nicholas County Sheriff's office. The incident occurred near the roadway entrance to a local car wash.

Keeping farm ponds in shape for fishing

Each year, hundreds of landowners throughout the state receive technical guidance on fishery management from biologists of the Kentucky Department of Fish and Wildlife Resources. This free service, provided by the department's seven district fishery biologists, assists landowners with farm pond stocking and management, as well as related water quality control problems or aquatic weed control.

Ted Crowell, assistant director of the Division of Fisheries, explained that, even though the technical guidance is provided free, landowners must pay for the transportation cost of fish that are stocked, fish toxicants, or other chemicals that may be recommended. It's important for landowners to also realize the program is operated on a first-come, first-served basis, and that it may take some time for the biologist to get to your location.

Any valid management strategy could be utilized under the biologist's direction for a specified period of time. For example, permits could remove the state limit on bass if a population is stunted, or prohibit the harvest of any bass if only a small number of big fish are present. The permits will be signed by the local conservation officer, district fishery biologist and district fishery biologist and district fishery biologist.

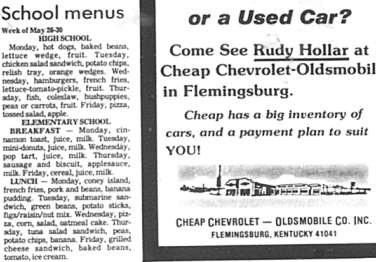
Monday, hot dogs, baked beans, lettuce wedge, fruit. Tuesday, chicken salad sandwich, potato salad, cole slaw, orange wedges. Wednesday, hamburgers, french fries, lettuce-tomato-eggplant, fruit. Thursday, fish, french fries, potato salad, cole slaw, fruit. Friday, pizza, tomato salad, apple.

Monday, cinnamon toast, juice, milk. Tuesday, mini-donuts, juice, milk. Wednesday, mini-donuts, juice, milk. Thursday, sausage and biscuit, apple sauce, milk. Friday, corned beef, cabbage, potatoes, milk. Saturday, sausage and biscuit, apple sauce, milk. Sunday, sausage and biscuit, apple sauce, milk.

Monday, hot dogs, baked beans, lettuce wedge, fruit. Tuesday, chicken salad sandwich, potato salad, cole slaw, orange wedges. Wednesday, hamburgers, french fries, lettuce-tomato-eggplant, fruit. Thursday, fish, french fries, potato salad, cole slaw, fruit. Friday, pizza, tomato salad, apple.

Need a New Car... or a Used Car?

Come See Rudy Hollar at Cheap Chevrolet-Oldsmobile in Flemingsburg. Cheap has a big inventory of cars, and a payment plan to suit YOU!



CHEAP CHEVROLET - OLDSMOBILE CO. INC. FLEMINGSBURG, KENTUCKY 41041



"Wanta know what's happening in Nicholas County?"

These Newsstand Dealers have the answer... The Carlisle Mercury!

35¢ per copy

Elect TOM HOGGE State Representative Bath, Montgomery and Nicholas Counties DEMOCRATIC PRIMARY - MAY 27, 1986 -



Field trip to Ohio These Nicholas County High School students are pictured on Superstition Mountain State Park near Painesville, Ohio. The field trip to the park was a part of their study of American History. The park is built around a 1300 foot effigy of a snake built of rocks and earth. The students are in Danny Tockitt and Charles Durham's History classes.

Called meeting May 27

Bus drivers - Frank Cleaver, Louise Coburn, Phillip Colborn, Annetta Dampier, Janet Sue Doyle (Kudergarten route), Annette Faria (Vocational route), Billy MacGinnie, Elaine Hartwick, Edward Hoppper, Billy Ray Hunter, Junior Ishmael, Addie Jefferson, W.C. Jefferson, Faye Mathen, Carl Matten, Mary Jo McCard, Wanda Silbert (Kudergarten route), Don Smith, Linda Stone, Jess Hatch (bus mechanics).

CLASSIFIED personnel for the Nicholas County office include: Fay Robinson, Kathy Hlander, Dorothy Wootley, Sue Woodall. Alder, Viola Cleaver, Burton Condon, Louise Curran, Brenda Day, Fanny Duncan, Fanny Egan, Mary Laywood, Pat Harner, Betty Guthrie, Sharon Hedges, Helen Sobe, Stephanie Woodard.

WOOD was treated for wounds at Nicholas County Hospital but left Sunday night against advice from the medical staff on duty. Duffy was assisted in the investigation by the Carlisle Police Department and the Nicholas County Sheriff's office. The incident occurred near the roadway entrance to a local car wash.

WOOD was treated for wounds at Nicholas County Hospital but left Sunday night against advice from the medical staff on duty. Duffy was assisted in the investigation by the Carlisle Police Department and the Nicholas County Sheriff's office. The incident occurred near the roadway entrance to a local car wash.

WOOD was treated for wounds at Nicholas County Hospital but left Sunday night against advice from the medical staff on duty. Duffy was assisted in the investigation by the Carlisle Police Department and the Nicholas County Sheriff's office. The incident occurred near the roadway entrance to a local car wash.

Table with columns for Stock report, CATTLE RECEIPTS, HOG RECEIPTS, etc.

Asbury College graduation June 2

Elect TOM HOGGE State Representative Bath, Montgomery and Nicholas Counties DEMOCRATIC PRIMARY - MAY 27, 1986 -

Garrett Furniture 222 W. Main - Carlisle - Phone 289-2308

READY for a CHANGE? Elect TOM HOGGE State Representative

READY for a CHANGE? Elect TOM HOGGE State Representative

Elect TOM HOGGE State Representative and things will be BETTER for you!

Hopkins Drug Co. Your Prescription our speciality. Includes images of various medicines and a list of products.