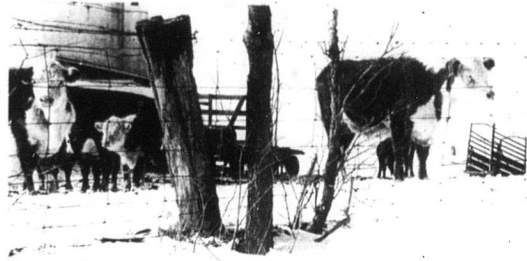


FEB
21
1985



Where's the feed,
we're hungry

Some of the Mercury staff were "out and about" Friday afternoon and snapped these cattle in a field on the Moorefield Road. If they look hungry it may be because feeding crews were unable to maneuver the snow-drifted roads after the major storm which literally paralyzed the county. — Mercury photo.

The Carlisle Mercury

118th year, No. 8

Carlisle, Kentucky 40311

Thursday, February 21, 1985

30 cents per copy

Rescuers work 'round clock

County, City and Guards join forces following storm

29 persons stranded near Moorefield Tuesday night

By Janis R. Deanan

The combined efforts of city, county and state road departments and the local National Guard unit, both governmental officials and numerous individuals have seen Nicholas County through one of the worst snow storms to hit Kentucky in recent years.

Mr. Billy G. Weisman, Adjutant General, formed Nicholas one of the worst hit counties in the state after an air and ground survey of the county on Wednesday.

The storm starting around 6:46 a.m. Tuesday morning, Feb. 12 and continuing for about 24 hours, dropped from 10 to 18 inches of snow on the ground, and winds gusting from 15 to 25 miles per hour caused five to 10 foot drifts to block most county roads.

Starting late Tuesday afternoon, snow removal crews and officials work 24 hours a day on streets, roads and highways trying to restore travel within the county, and also transporting people to and from work places and answering distress calls for transportation. School was cancelled for the rest of the week. Blue Grass Industries and Kaitling were shut down Wednesday through Friday.

By Sunday their efforts had paid off, and the county was mobile again. Troops in the downtown area were in good shape with parking areas scraped clean. Schools were operating on a one-hour delay Monday.

County Judge/Executive Reese
* See page 3, reverse, page 7



Guards airlift critical patient

Charles Williams of Little Rock was flown Thursday afternoon to Carlisle from Fort by a National Guards helicopter. Williams, in critical condition, was accompanied by Mrs. Williams, Bourbon County Sheriff Charles Hinkle and Bourbon County Emergency Medical Staff members. The Nicholas County

Ambulance Service staff Ronald McDonald, Daryl McFarland and Fred Bowles, was on hand to transfer Williams to Nicholas County Hospital. The helicopter is pictured arriving at the local Guard armory parking lot. — Mercury photo.

Record keeping rules for business use of autos are modified IRS says

Pepper meeting Feb. 25 6:30 in small courtroom

Two different pepper programs will be presented — one involving the processed pepper market that several farmers have raised in past years and the second involving raising peppers for sale through the market. One such market is being developed in Lexington that could have some appeal to local producers.

Three junior students to compete in Golden 100 at Murray State University

More than 300 of the most outstanding high school juniors from across the state have been nominated for consideration. A Golden 100 academic contest at Murray State University on Friday and Monday, March 3 and 4.

Nominations from Nicholas County are Lynn Clark and Matthew Phillip Gidycz. Each accredited high school in

The Internal Revenue Service has announced that it is issuing temporary and proposed regulations modifying the requirement to keep "adequate contemporaneous records" for automobiles and certain other vehicles.

These regulations will modify the record keeping required to satisfy section 274(d) of the Internal Revenue Code. They will also provide four special rates where patterns of use justify eliminating or substantially reducing the record keeping requirement.

Under section 274(d)(1) of the Code, taxpayers must substantiate any deduction or credit claimed with respect to automobiles or certain other vehicles by "adequate contemporaneous records."

There will be a public meeting of the Board of County Commissioners of Nicholas County customers of the Sharpburg Water District Friday, Feb. 22, at 7 p.m. at the Moorefield Methodist Church.

Representative Adria Arnold will attend the meeting, as will both County Judge/Executive and Mrs. Charles Hart, Vernon Barber, Disaster and Emergency Services (DES) chairman for both County and Vernon Grass, DES area coordinator from Moorefield.

By Janis R. Deanan

Editor's Note: The information for this article was gathered from telephone conversations with Mrs. Sammie Daley, Donald Henry, Gayle Liver, Tom Hunt, and from talking to National Guardsmen: Larry Myers and Ricky Wiloughby.

The world seemed to stand still Tuesday afternoon and night for 28 Blue Grass Industries employees who were stranded at home and for two men and a woman who found themselves stranded in their cars and trucks on Ky. 26 at the Bath County line as the relentless wind caused mounds of snow to choke their path making the road completely impassable and visibility near zero. It was not long before some feared their cars would be completely covered up as the drifts began to build around them.

Their story is the stuff of which movies are made, and it began to unfold about 7:30 p.m. Tuesday.

Monday's predicted snow did not materialize until Tuesday morning, and by noon there were several inches on the ground with the wind velocity at 15 to 20 miles per hour. That was just the beginning of what proved to be the worst snow storm to hit Nicholas County for many years.

At around 7:30 p.m. Donald Henry, Blue Grass Industries president, informed employees of the seriousness of the storm, and that any who wished to could start home. Salary checks were due to be issued Tuesday ending the work week with Thursday and Friday.

The regulations will also provide four special rates when a business trip may make a single entry in a log for the entire trip. The regulations will be eliminated or substantially reduced.

Farm vehicles — Taxpayers can deduct the cost of a vehicle used for business purposes if the vehicle is used for more than 50 percent of the time for business purposes.

Employees Ole Platt and Donna Clark had left in a company truck earlier in the day to make a party to the car to Carlisle on Ky. 26 near Bond Mountain farm. They pulled over to use a car to get to the car and they were unable to pull out. They phoned the Moorefield house to inform the Blue Grass personnel of their plight.

They were stranded in their cars. They were stranded in their cars. They were stranded in their cars.

They were stranded in their cars. They were stranded in their cars. They were stranded in their cars.

They were stranded in their cars. They were stranded in their cars. They were stranded in their cars.

They were stranded in their cars. They were stranded in their cars. They were stranded in their cars.

They were stranded in their cars. They were stranded in their cars. They were stranded in their cars.