

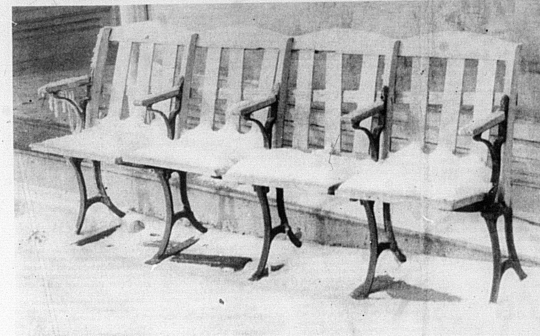
# The Carlisle Mercury

116th year, No. 3

Carlisle, Kentucky 40311, Thursday, January 20, 1983

25 cents per copy

JAN  
20  
1983



## Burley group named to handle '82 carryover

By Bennett Black  
An emergency one-year program for handling excess tobacco from the 1982 burley crop is being shaped up for farmers of this area by the Burley Tobacco Growers Cooperative Association.  
Details as to time and place of delivery are being drafted, to be put into operation after the market closes in February or March.  
Growers will be notified through the news media at that time, as to delivery dates and location of receiving stations.  
Such tobacco cannot be sold without penalty until next marketing year, which begins Oct. 1. It will be processed and stored, then offered for sale by sealed bids.  
Any amount will then be placed under lien in the Burley Growers' Association receipts. Growers will receive advance payment by grades at 1982 loss rates, less some expenses.  
U.S. Department of Agriculture officials at Washington and the carryover program is limited to the producer-owned and operated Burley Tobacco Growers Cooperative Association, Lexington, Ky., and the Burley Stabilization Corporation, Knoxville, Tenn.  
This exclusive designation of the two grower co-ops, says USDA, is to assure the excess leaf will not reach commercial trade channels, and will not be sold before the next marketing year, in compliance with marketing quota laws.  
However, the program is voluntary and growers may store their carryover tobacco on their own farm or in warehouses, as long as it is kept separated from other crops, according to Everett Black, head of the USDA Agricultural Stabilization and Conservation Service.  
Mr. Black said approximately 50 million pounds was raised in 1982 in excess of 10 percent of farm quotas, due to last season's excellent growing conditions.  
Meanwhile, the Burley Growers Association is receiving increasing amounts of tobacco on the market, now 72.9 percent for the season, and in excess of last year's 40 percent.  
A total of 141,000,000 pounds has been taken under lien as of Jan. 15, said Alvin R. Beckley, executive secretary and general manager of the Association, and the USDA is now projecting the total will reach 200 million pounds.

A cold scene from the Mercury files

## KU to provide home energy audits

Kentucky Utilities Company announced plans this week for implementing the Residential Conservation Service Plan, a program that will provide home audits and information for KU's residential customers to improve the energy efficiency of their homes.  
The company will submit the plan to the Kentucky Public Service Commission within 30 days. Training auditors will begin soon and the first audits are expected to be made either in late February or March.  
All customers of KU will receive in their electric bill envelope an announcement of the plan, including an offer to conduct an audit. A KU spokesman said that since the company operates in 78 Kentucky counties and serves 280,000 residential customers, it will require a period of time before all customers receive the announcement and audit application form, but the mailing by June 15, 1983.  
There will be a charge of \$14 for the audit. A trained auditor will be sent to the customer's home to measure and inspect for energy-saving opportunities. The customer will receive a computerized printout indicating the energy savings that can be accomplished by utilizing the applicable conservation measures.  
If a customer requests assistance in obtaining installers and contractors or obtaining bids and financing information, the auditor will provide such information.  
KU has actively promoted energy conservation measures for the company's customers for many years but the spokesman said, the audit program will provide the information in a more formal manner.  
The company does not know how many customers will request audits, but the spokesman said it is KU's desire to communicate effectively with the customers and provide a well-conducted audit that will be beneficial to the customers.

This scene dates itself, but we wonder how many will remember where the picture was taken. Of course the fellow that used to own the building would remember right off. Since the mercury (that stuff used in thermometers) was hovering around zero Tuesday a trip to the Mercury's picture file held a greater attraction than roaming around outside looking for something to mark the weather, since that involved taking, developing, printing, then making a halftone. The Mercury's photographer chose the route of least resistance. — Mercury photo.

## LL tourney begins Jan. 23

The Nicholas County Little League boys and girls basketball tournament will be played beginning Sunday, Jan. 23 and continue Jan. 24, 25, 26 and 29. The games will be played at the Nicholas County High School beginning at 1 p.m. Sunday between the Bears and Hobbs. The second game will be at 2:30 p.m. Sunday between the Demos and Jax.  
For remaining games see schedule elsewhere.

## In-service date

Nicholas County Schools will be in session on Friday, Jan. 21. This date was originally set as an in-service day, however teachers have already worked extra hours after school to fulfill this in-service time. Students and teachers will attend school as usual on this date.

## OVC changes name to Centel

The "new" cable television company in town is really your "old friend" with a new name. OVC Telecommunications Inc. (OVC Telecommunications Inc.) of the Richmond-based operation which displays the Centel logo are also in use.  
New signs have also been ordered, said Vogt. The cable company has also placed ads to inform the public of the name change and help subscribers become familiar with the Centel name during the transition.  
"We're proud to be a part of Centel Corporation," said Vogt. "The Centel team consists of the nation's fourth largest independent telephone company, various communications firms and electric utility," said Vogt. "We're more than ever, Centel of Kentucky can draw upon an expanding network of technological expertise and financial resources, he added.

## Farmers' hotline help offer made

The Kentucky Resources Council, P.O. Box 1306, Lexington, announced Monday, Jan. 17, that a Kentucky Farm Survival telephone number had been established for farmers seeking legal, financial or community assistance. The number is (606) 298-7771.  
The Council went on to state that "a severe credit and price crisis afflicts farmers. Farm families are losing their land and their homes. Agriculture is one of Kentucky's most important industries, and 20 percent of our

Nicholas County Court Clerk Rose Scott noted there will be several changes for persons renewing their vehicle registration this year.  
In the past, Scott said, February had been the busiest month for renewals, but with a new system in effect which will change the renewal month to the month of birth of the person who registers the vehicle, it would even out more in the future.  
This year, car owners will register their vehicles in the month that the deal expires. But they will have the option of renewing the vehicle until their birth month this year or their birth month in 1984 from that point on, they will renew the registration in the same month in which they were born.  
To register a vehicle, Scott said it is important to bring the existing registration form or license receipt. If this is not available, people should write down the license plate number. They also will need to bring their social security number.  
The annual registration fee is \$13.50, but if someone wants to register their vehicle through 1984 they would pay the yearly rate plus a pro-rated rate to take care of 1983. The schedule with that story will show the amount due.  
A car jointly owned may be registered in either person's birth

## New procedure Will ease registration rush

Staggered Registration FIRST TIME AND TRANSFERS

Month	BIRTH MONTHS											
	Jan	Feb	Mar	Apr	May	June	July	Aug	Sept	Oct	Nov	Dec
Jan	2.0%	3.5%	4.5%	5.5%	6.5%	7.5%	8.5%	9.5%	10.5%	11.5%	12.5%	13.5%
Feb	1.5%	3.0%	4.0%	5.0%	6.0%	7.0%	8.0%	9.0%	10.0%	11.0%	12.0%	13.0%
March	1.0%	2.5%	3.5%	4.5%	5.5%	6.5%	7.5%	8.5%	9.5%	10.5%	11.5%	12.5%
April	0.5%	2.0%	3.0%	4.0%	5.0%	6.0%	7.0%	8.0%	9.0%	10.0%	11.0%	12.0%
May	0.0%	1.5%	2.5%	3.5%	4.5%	5.5%	6.5%	7.5%	8.5%	9.5%	10.5%	11.5%
June	0.0%	1.0%	2.0%	3.0%	4.0%	5.0%	6.0%	7.0%	8.0%	9.0%	10.0%	11.0%
July	0.0%	0.5%	1.5%	2.5%	3.5%	4.5%	5.5%	6.5%	7.5%	8.5%	9.5%	10.5%
August	0.0%	0.0%	1.0%	2.0%	3.0%	4.0%	5.0%	6.0%	7.0%	8.0%	9.0%	10.0%
Sept.	0.0%	0.0%	0.5%	1.5%	2.5%	3.5%	4.5%	5.5%	6.5%	7.5%	8.5%	9.5%
Oct.	0.0%	0.0%	0.0%	1.0%	2.0%	3.0%	4.0%	5.0%	6.0%	7.0%	8.0%	9.0%
Nov.	0.0%	0.0%	0.0%	0.5%	1.5%	2.5%	3.5%	4.5%	5.5%	6.5%	7.5%	8.5%
Dec.	0.0%	0.0%	0.0%	0.0%	1.0%	2.0%	3.0%	4.0%	5.0%	6.0%	7.0%	8.0%

## Fighting crime everyone's business

By Thomas W. Puckett  
Division of ACTION  
Jo Ann Karr on the Pleasant Grove section of Dallas, Texas, was sick and tired of the high rate of crime in her neighborhood. So were her neighbors. Everyone knew the police department was short-handed and in need of help, and Jo Ann, a grandmother who had a grandchild in the military, decided to do something about it. She called a meeting to bring everyone together to discuss the problem. It was once an old frontier her front yard of interested citizens and set about organizing a crime watch.

Said Jo Ann, "We're going to learn to be busy." That was in June, two years ago, and there were 100 volunteers ready to learn.  
Today there are more than 600 volunteers in Pleasant Grove, looking out for the homes and property of the area's 3,000 residents. Volunteers are from all age groups, their common bond is to provide security for their neighbors. It was once an old frontier her front yard of interested citizens and set about organizing a crime watch.  
"See fighting crime, page 3"

HOW TO REGISTER YOUR 1983 CAR REGISTRATION FEE— Find the month your registration is due in 1983 in the left hand column. Then find your birth month in the top line. The point where the two lines meet shows the total to be paid to register your car until your birth month in 1984. Contact your county court clerk if you have questions.