

The Carlisle Mercury

116th Year No. 49

Carlisle, Kentucky 40311, Thursday, December 8, 1983

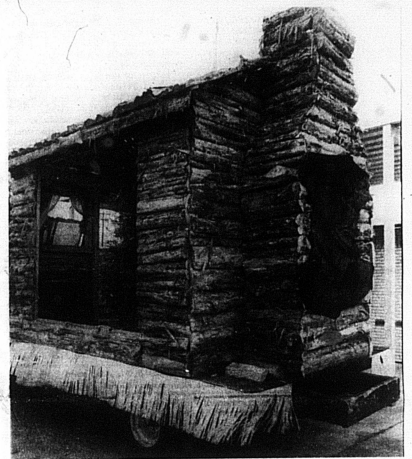
30 Cents per copy

DEC
8
1983

Rescheduled last night

Rain forces Yule parade postponement

It was rained out this summer and fall when we really needed it! forced postponement of Saturday's annual Christmas Parade to the dismay of its sponsor and participants.
It was rescheduled for Wednesday of this week when an extended outlook called for clear weather. More rain is predicted for the weekend.
John Burke, president of the Carlisle/Nicholas County Chamber of Commerce, parade sponsor, said that Wednesday was the only date this week which did not conflict with other scheduled events.
He said that some churches were planning to arrange Wednesday night services prior to the parade.
BOTH BANDS, however, were casualties of the later date. The Bourbon County High School band and the Nicholas County High School band were unavailable due to previous commitments, Burke said.
An invitation was extended to the top four float winners in the Paris Christmas Parade Monday night to appear, but not complete, in Carlisle's parade this season.
At 7 p.m. Tuesday, all 13 locally created floats were expected to participate here Wednesday night.
ALL MAJOR EVENTS which the C of C planned this year were victimized by rain. These included two tractor pulls, the 6th of July fireworks display and a November 29 turkey shoot.
"It just figured that it would rain on our parade," Burke lamented.
Last year's parade, with fewer floats, ran on the 6 of 1980 to stage. This year the figure is expected to run about 1,200.
AT A CALLED meeting of the Historical Society board of directors Monday night, it was decided to cancel the open house originally scheduled prior to the parade. It will be held at a later date, according to Rob Lane, president.



Local float in Frankfort parade

The Nicholas County Hospital float, entered in the Christmas Parade here this week, will be part of the inaugural parade in Frankfort Tuesday morning. Christmas decor will be removed and "The Last Home of Daniel Boone in Kentucky" will be inserted in keeping with the parade theme of historical happenings from each of Kentucky's 120 counties. The float, constructed by Tommy Vaughn, Paul Riche and Lloyd Duncan, depicts the restored Boone-built log cabin at Forest Retreat. (See Here Abouts, page 5)—Mercury photo.

Toy Drive underway

Chamber/Lions join forces to collect for needy kids

The second annual Toy Drive to collect toys for underprivileged youngsters of the community, is once again the seasonal project of the Carlisle/Nicholas County Chamber of Commerce.
This year the local Lions Club is joining the project to help Chamber members distribute what they hope will be a record number of new and nearly new toys to homes throughout the town and county.
"Some of our members were out delivering toys very late Christmas Eve and very early Christmas morning last year," Chamber president John Burke said. "We're hoping to have the Lions Club cooperating with us to speed the delivery."
Collection points established for donations have been set up at the Community Action Center, Kelley's Restaurant, Nicholas County Health Department, Casewell's Furniture and the Kentucky Utilities office.
Burke stressed that toys be new or in almost perfect condition. "We just don't have the manpower to inspect broken ones," he said.
A list of homes with the name, age and sex of all needy children is supplied by the Community Action Center and the Nicholas County Health Department.
It is hoped that enough toys will be donated to fill the need at every home on the list.
"When shopping for your own youngster, please consider those 100 fortunate children who will have little or no Christmas at all and buy a small toy for them, too," Burke urged.
Drive ends December 23
Donations will be accepted through Friday, Dec. 23, during normal business hours at the collection points.

LIBRARY WELLS CLOSE FOR CHRISTMAS
The Nicholas County Library will be closed Friday and Saturday, Dec. 23 and 24, and Monday, Dec. 26, for the Christmas holiday.



All-CKC football players honored

First team all-CKC team members of the NCIS Bluejackets and the coaching staff are shown at the CKC winter meeting Saturday in Lexington. From left, Greg Letcher, assistant coach; Robert Hopkins; Robble Barr, assistant coach; Terry Ledford; Eric McGuffey; Ben Pumphrey, head coach; Steve Anderson and Rocky Young, not shown, were named to the second team. (See story, page 4).—Photo submitted.

Shumates attribute teamwork to success of marriage and careers

In later years, Giffin Manufacturing became the county's biggest employer, providing millions of dollars into the local economy over the years, said Cliff and Carrie Shumates, who joined the manufacturing company in 1962.
CLIFF AND CARRIE married in 1960, the year Blue Grass Industries was sold to Jockey International. In the years the Shumates held sway, they saw an operation begin with a handful of employees swell to a payroll numbering 2,600 persons during the peak employment period at Blue Grass Industries.
At the end of 1948, the first year of operation, Giffin Manufacturing had a payroll of 36. "We promised the Carlisle-Nicholas County Chamber of Commerce and others who raised the money that made it possible for us to get started that we would employ 30 people the first year and we met our goal," Carrie recalls with great pride. Suffice it to say Blue Grass Industries became the county's biggest employer of women in business, a field virtually void of females at the upper management level in the early going.
Both are still active in Marie Chapter 290, Order of Eastern Star where she served as Worthy Matron and he as a member of the Quapaw Lodge here and Omega Star in Lexington.
In 1975, Carrie held the office of Grand Electra in the state OES. She is an active member of the Paris Business and Professional Woman's Club. Both are members of the First Christian Church of Carlisle where he is a deacon, the Carlisle-Nicholas Chamber of Commerce and Nicholas County Club.
In 1979, the year before their retirement, Carrie was listed in Who's Who of the World's Business Women. It was an honor she especially appreciates

Ambulance service bids studied

Ambulance service for Carlisle and Nicholas County was the topic of discussion at a called meeting of the City Council Monday night, with Judge/Executive Reese Smoot in attendance.
1840 Ambulance Service, run by Larry Burton, is currently being operated in the old Carlisle Armory building. The county owns the building and supports the service with \$10,000 in funds allocated by the Fiscal Court last January. The city donated \$5,000 as its part toward financing the service.
Maintenance on No. 1 ambulance is shared equally by the Court and the service, after the first \$100 is paid. The Court is responsible for all the maintenance on No. 2 ambulance.
The service buys all gas that is used. Some 250 calls were made from Jan. 1, 1982 to Dec. 1, 1982. The service collected 85 percent of its revenue in the first six months, and 90 percent in the last six months. However, some Medicare and Medicaid payments have not yet come in. Two full-time and three part-time persons are employed. The service pays the insurance on the ambulances. The Court has spent about \$1,000 on vehicle maintenance and \$4,000 on a door to date.
IN OTHER business, it was announced by Carlisle Letcher that the city employee Christmas party will be held Friday night, Dec. 9, at the old Carlisle Armory.

Nursing home one of best!
(Story page 5)

IN THE BEGINNING, Giffin manu-

since it chronicles her efforts as a power of women in business, a field virtually void of females at the upper management level in the early going.
CLIFF WAS BORN in Fleming County, the son of Mr. and Mrs. Henry Shumate, and spent much of his childhood in Harrison County. Carrie, one of 11 children, was born in Estill County before moving to Bourbon County with her parents. Mr. and Mrs. Isaac Sevey.
Their marriage produced two children, a daughter, Mrs. Rose Carol Walters, and son Wayne, both raised in Paris. In 1970, the Shumates moved into their present country home on the walks of life. "Nicholas Countians can do anything they set their minds to. We've never seen them fail yet."
The Shumates certainly didn't, and are living proof that almost nothing is impossible if you are willing to work for it. This they did.