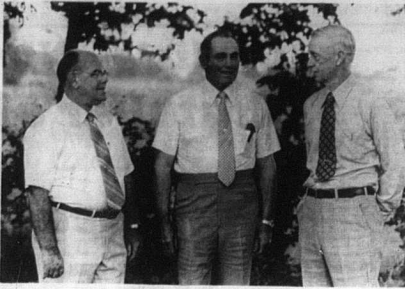


James Lowe re-elected to Harrison County RECC

During the 44th annual meeting of the members of Harrison Rural Electric Cooperative Thursday evening, July 8, the following members were re-elected to serve three-year terms on the Board of Directors: **James C. Lowe**, Harrison County; **Walter Wright**, Bourbon County; and **James C. Lowe**, Nicholas County. Also during the business meeting, several items were given by Don Shew, President of Kentucky Association of Electric Cooperatives with headquarters in Louisville. Cooperative Manager **Ernest Skinner** est-



Harrison RECC re-elected several of their directors at their recent annual meeting. From left are J. Walton Wright of Bourbon County, James C. Lowe of Nicholas County and James C. Lowe of Harrison County. — Photo submitted.

Prize winner

Moorefield boy wins at FIM co-op meeting

The annual meeting of the Fleming-Mason Rural Electric Cooperative was held Wednesday, July 7, on the cooperative's farm in Fleming County. Cooperative Manager **Horton DeLany**, estimated that 500 members and friends were on hand for the meeting, which included music, as well as business. The cooperative's annual business session included the election of three members to the Board of Directors. Elected for a term of three years were **J.E. Smith**, J. Forrester and **James Wells**.

VA to get tough with veterans

Dept. collection has never been a popular subject in the VA or any other federal agency. But the current administration has chosen to place very high priority on the collection of the \$17.5 billion in debts owed by the federal government. Of this amount, approximately \$1.5 billion is owed by veterans nationwide, who have studied under the GI Bill and received more than \$10 billion in benefits. The VA is authorized to charge interest, as well as to sue for payment. It is currently using a number of methods to collect on these debts. A smaller amount is owed by veterans who received excessive medical payments that should have been repaid to the U.S. Treasury.

State revenues are up

Gov. John Y. Brown Jr. announced today that General Fund tax collections for the fiscal year ended June 30 exceeded the revenue estimates by \$23 million or 1.5 percent of total revenues. Total General Fund revenues for fiscal 1982 were up 1.7 percent over comparable tax collections for 1981, Brown said.

Fishing the jumps

Several lakes around Kentucky are now reporting that the white bass are "in the jumps." This is a signal for those who like their fishing fast-paced and exciting to hit up the boat and head for the water. Basically, jump fishing means catching white bass (and sometimes catch bass) as they are feeding on schools of fringe fish. Most of the time they are not feeding on schools, but they are feeding on schools of fringe fish, since much of the activity will be on the surface. Once the schools of fringe fish and move quickly into casting range, they may catch a fish, or at least get a good cast out until the school disperses. Tackle for jump fishing should be designed for long casts. This means a fairly light line, a long rod and a comparatively heavy lure with little wind resistance. Flashing spoons and weighted spinners are favorites. Jump fishermen have developed another lure that works well—the "plunker and fly" combination. This is a water-popping lure with the hook removed and a streamer fly attached to the end with about 12 inches of strong monofilament line. The hookline now will only give the combination the necessary weight for long casts, but the sound it makes also possibly attracts fish by imitating the splash of a feeding white bass.

Retrieving the lure near the surface is productive but will often produce only small fish. The older and larger white fish sometimes stay deeper in the school of fringe fish, waiting for minnows covered by the energetic youngster to sink. To catch these larger fish, just reel your lure into the school and let it sink. A fish will often take it as if it were

Harrison RECC elects
James C. Lowe of Nicholas County and J. Walton Wright of Bourbon County were re-elected several of their directors at their recent annual meeting. From left are J. Walton Wright of Bourbon County, James C. Lowe of Nicholas County and James C. Lowe of Harrison County. — Photo submitted.

Tax withholding booklets mailed
Revenue Secretary Roy Geary said today that new Kentucky Income Tax Withholding booklets containing new withholding tables will be mailed to Kentucky employers within the week. Some of the booklets may not be delivered by the US Postal Service, however, until the middle of next week, Secretary Geary said.

State revenues are up
Gov. John Y. Brown Jr. announced today that General Fund tax collections for the fiscal year ended June 30 exceeded the revenue estimates by \$23 million or 1.5 percent of total revenues. Total General Fund revenues for fiscal 1982 were up 1.7 percent over comparable tax collections for 1981, Brown said.

Fishing the jumps

Several lakes around Kentucky are now reporting that the white bass are "in the jumps." This is a signal for those who like their fishing fast-paced and exciting to hit up the boat and head for the water. Basically, jump fishing means catching white bass (and sometimes catch bass) as they are feeding on schools of fringe fish. Most of the time they are not feeding on schools, but they are feeding on schools of fringe fish, since much of the activity will be on the surface. Once the schools of fringe fish and move quickly into casting range, they may catch a fish, or at least get a good cast out until the school disperses. Tackle for jump fishing should be designed for long casts. This means a fairly light line, a long rod and a comparatively heavy lure with little wind resistance. Flashing spoons and weighted spinners are favorites. Jump fishermen have developed another lure that works well—the "plunker and fly" combination. This is a water-popping lure with the hook removed and a streamer fly attached to the end with about 12 inches of strong monofilament line. The hookline now will only give the combination the necessary weight for long casts, but the sound it makes also possibly attracts fish by imitating the splash of a feeding white bass.

Retrieving the lure near the surface is productive but will often produce only small fish. The older and larger white fish sometimes stay deeper in the school of fringe fish, waiting for minnows covered by the energetic youngster to sink. To catch these larger fish, just reel your lure into the school and let it sink. A fish will often take it as if it were

Albert Clay to judge
Albert G. Clay of Mt. Sterling, chairman of the board of the Barbours Auction Warehouse Association, will be a judge at the second annual World Tobacco Auctioning Championship in Danville, Va. Oct. 8.

In the field

Sgt. Jim Galbraith of Carlisle and other members of the Kentucky Army National Guard currently are undergoing annual training near Clay City at the former Hiden Valley Resort. More than 300 members of the 51st are converting the facility into a training site for the Guard. — Photo submitted.

Consumer Alert: Estimates and repairs

Since your time, money and perhaps your peace of mind are involved, you should take every precaution to assure you are getting quality repair work for your automobile," advises Steven I. Becher, the state attorney general.

No more extensions for insurance companies
Revenue Secretary Roy Geary announced that insurance companies will be granted no more extensions of time for paying the new insurance premiums surcharge.

Special Offer!

Advanced Self Defense Class
Instructed by Kent Hill (Sho-Dan 1st Degree Black Belt)

8-Week Course only \$36.00
Class Starts July 25, 1982

★ Sign up now at **Carlisle Health Club**
222 Locust Street

C&G WE RESERVE THE RIGHT TO LIMIT QUANTITIES.

FOODTOWN

UPPER MARKETS

Round Potatoes 10 lb. bag \$2.49
White Corn 5 can 99¢

Chuck Roast \$1.79

Crisco Shortening \$1.69

Musselman Apple Sauce 89¢

Southern Peaches 39¢
B-Size Red Potatoes 39¢
Green Beans 49¢
Carrots 1 lb. pkg. \$1.00
Nectarines large size \$1.19
Cantaloupes 89¢
White Potatoes 10 lb. 1.49

Beer Detergent \$1.79

Box Frosting 3/\$1.00

Cake Mix 3/\$1.00

Banquet Cream Pies 79¢

Pepsi, Ma. Dew Diet Pepsi \$1.28

Swanson Entrees 79¢

Dority Downy Fabric Softener \$1.95

Smuckers Preserves \$1.29

Martha White Mils. 3/79¢
Wagner Drinks 37¢
Smuckers Dill Slices 89¢
Frito Lay Tortilla \$1.69
Frito Lay Cheesitos 99¢
Nabors Cookies \$1.19
Chel Boy de Canned Meat \$1.49
Vegetable Omelets 69¢

Wagner Drinks 37¢
Smuckers Dill Slices 89¢
Frito Lay Tortilla \$1.69
Frito Lay Cheesitos 99¢
Nabors Cookies \$1.19
Chel Boy de Canned Meat \$1.49
Vegetable Omelets 69¢

Maxwell House Instant Coffee \$3.99

Nestle Instant Tea \$1.99

Banquet Cook-N-Bags 2/79¢

★Coupons for the items listed below may be found in the Foodtown Circular

Dream Whip	3 ea. can 1.19	Tang Breakfast Drink	\$1.69	Country Time Lemonade	\$3.59
Cycle 2, 2, 3, 4 Dog Food	3/\$1.00	Hot Juice	24 ea. 99¢	Country Time Lemonade	\$2.69
Beans & Fruits	30 ea. 25¢ ea. 79¢	Granola Snacks	6 ea. \$1.39	Country Time Lemonade	59¢
Instant Margarine	69¢	Wheat Tots	12 ea. 99¢	Heinz White Vinegar	\$1.19
Bonnie Supreme	\$1.59	Charlie Honey Nut	\$1.49	Apple Cider Vinegar	\$1.29
Cold Medal Fruit	99¢	Crisp Wheat & Raisins	\$1.09	Heinz Baby Food	\$0.69
Pot Grape Nuts	\$1.49	Strawberry Shortcake	\$1.49		

The Carlisle Mercury
Winner of over 100 state and national awards for newspaper excellence!

on sale each week with area news and pictures at

True Value Hardware
Vaughn's Cafe
Barnes Ky. Food Store
Jones' Grocery
Hopkins Drug Store
West End Market, Carlisle
Millersburg Market, Clark's Grocery

34 lbs. EXTRA GAIN Every 100 Pasture Days

Nicholas County Feeders Supply
Fain Road
Carlisle, Ky. 40311

Stand-Outs!
BESE SET THE PACE!
It's your comfort that's the key to success in the marketplace. There's a selection of products here that will give you the edge you need.

Red Wings
Carter's of Carlisle