

Your right to know

NOTICE TO THE PUBLIC

Notice is hereby given by Columbia Gas of Kentucky, Inc., a corporation with its principal offices at Columbus, Ohio, to its customers and to the public, that said corporation, on the 10th day of July, 1981, filed with the Public Service Commission of Kentucky at Frankfort, Kentucky, the following revised sheets to its Tariff, P.S.C. Ky. No. 4.

Revised Sheet Nos. 3-A, 4, 5, 6 and 7, Superseding Revised Sheet Nos. 3, 3-A, 4, 5, 6 and 7.

Effective increased rates and charges proposed to become operative on and after August 1, 1981, by order issued on July 28, 1981, in Case No. 8281 the Public Service Commission of Kentucky ordered that the proposed rates and charges be and they hereby are suspended and the application of the rates is deferred for a period of five (5) months or after the 1st day of August, 1981. The Commission further ordered that a hearing be held thereon on the 11th day of November, 1981, at 10:00 a.m., Eastern Standard Time, at the Commission's offices in Frankfort, Kentucky. The proposed rates and charges are as follows:

General Service Rate Schedule GS-Residential RATE	
First	1 Mcf, or the right thereto, used through each meter each month \$5.330
Next	49 Mcf used through each meter each month - per Mcf 4.049
Next	50 Mcf used through each meter each month - per Mcf 3.999
Next	100 Mcf used through each meter each month - per Mcf 3.969
Next	800 Mcf used through each meter each month - per Mcf 3.939
All over 1,000 Mcf used through each meter each month - per Mcf 3.919	
The minimum monthly charge shall be \$5.33.	

Applicable in Ashland, Catlettsburg, Cynthiana, Foster, Frankfort, Fulton, Georgetown, Greenup, Hindman, Irvine, Lexington, Louisville, Maysville, Midway, Mt. Sterling, Paris, Raceland, Ravenna, Russell, South Williamson, Versailles, Winchester, Worthington and rural communities and areas served by the Company in Bath, Bourbon, Boyd, Bracken, Carter, Clark, Clay, Elliott, Fayette, Floyd, Franklin, Garrard, Harrison, Johnson, Knott, Lawrence, Lee, Lewis, Madison, Magoffin, Martin, Mason, Menifee, Montgomery, Morgan, Nicholas, Owsley, Pendleton, Pike, Powell, Robertson, Scott, and Woodford Counties, Kentucky.

General Service Rate Schedule GS-Commercial and Industrial RATE	
First	1 Mcf, or the right thereto used through each meter each month \$5.550
Next	49 Mcf used through each meter each month - per Mcf 4.200
Next	50 Mcf used through each meter each month - per Mcf 4.150
Next	100 Mcf used through each meter each month - per Mcf 4.120
Next	800 Mcf used through each meter each month - per Mcf 4.090
All over 1,000 Mcf used through each meter each month - per Mcf 4.070	
The minimum monthly charge shall be \$5.55.	

Applicable throughout the entire territory served by Columbia Gas of Kentucky, Inc. as mentioned above under Rate Schedule GS-Residential.

Firm and Curtailable Gas Service - Optional Rate Schedule FC-1 RATE	
Firm Number (Daily Firm Volume Times Number of Days in Month)	
First 1,000 Mcf per month @ \$4.001 per Mcf	
Over 1,000 Mcf per month @ \$3.951 per Mcf	

In the event Buyer shall desire to purchase on any day gas in excess of Buyer's specified Maximum Daily Volume, Buyer shall inform the Seller and if the Seller is able to provide such excess gas required by Buyer from its operations, Seller shall make such excess gas available at the rate of three dollars and eight tenths cents (\$3.801) per Mcf.

If such excess gas cannot be made available to Buyer from Seller's own operations, Seller may comply with such request to the extent that excess gas is temporarily available from Seller's gas supplier, in order to provide gas which otherwise would not be available. Such excess volume taken shall be paid for at the rate of three dollars and twenty-three cents (\$3.23) per Mcf.

On any day when Buyer has been notified to curtail deliveries, Buyer may request excess gas and to the extent such excess gas can be obtained from Seller's supplier, Buyer shall pay Seller at the rate of three dollars and twenty-three cents (\$3.23) per Mcf for all such volumes taken which would otherwise not be available.

The minimum monthly charge each billing month for gas delivered or the right of the Buyer to receive same shall be:

- The amount determined by applying the rates for the Firm Volume to a minimum monthly volume which shall be the product of fifty per cent of the specified Daily Firm Volume times thirty, except that:
- In the event of monthly, seasonal or annual curtailment due to gas supply shortage, the Minimum Monthly Charge shall be waived when the volume made available is less than 110% of the Firm Volume of (a) above, except that in no event will the Minimum Monthly Charge be less than one hundred fifty dollars (\$150).

Applicable through the entire territory served by Columbia Gas of Kentucky, Inc., as mentioned above under Rate Schedule GS-Residential.

Firm and Interruptible Gas Service - Optional Rate Schedule FI-1 RATE	
Daily Firm Volume	
First 5,000 Mcf per month @ \$3.948 per Mcf	
Over 5,000 Mcf per month @ \$3.918 per Mcf	

In the event Buyer shall desire to purchase on any day gas in excess of Buyer's specified Maximum Daily Volume, Buyer shall inform the Seller and if the Seller is able to provide such excess gas required by Buyer from its operations, Seller shall make such excess gas available at the rate of three dollars and eight tenths cents (\$3.788) per Mcf.

If such excess gas cannot be made available to Buyer from Seller's own operations, Seller may comply with such request to the extent that excess gas is temporarily available from Seller's gas supplier, in order to provide gas which otherwise would not be available. Such excess volume taken shall be paid for at the rate of three dollars and twenty-three cents (\$3.23) per Mcf.

On any day when Buyer has been notified to interrupt deliveries, Buyer may request excess gas and to the extent gas can be obtained from Seller's supplier, Buyer shall pay Seller at the rate of three dollars and twenty-three cents (\$3.23) per Mcf for all such volumes taken which would otherwise not be available.

The minimum monthly charge each billing month for gas delivered or the right of the Buyer to receive same shall be:

- The amount determined by applying the rates for the Firm Volume to a minimum monthly volume which shall be the product of fifty per cent of the specified Daily Firm Volume times thirty; except that:
- In the event of monthly, seasonal or annual curtailment due to gas supply shortage, the Minimum Monthly Charge shall be waived when the volume made available is less than 110% of the Firm Volume of (a) above, except that in no event will the Minimum Monthly Charge be less than three hundred dollars (\$300).

Applicable throughout the entire territory served by Columbia Gas of Kentucky, Inc., as mentioned above under Rate Schedule GS-Residential.

Firm and Interruptible Gas Service - Optional Rate Schedule FI-2 RATE	
Daily Firm Volume	
First 50,000 Mcf per month @ \$3.848 per Mcf	
Over 50,000 Mcf per month @ \$3.778 per Mcf	

In the event Buyer shall desire to purchase on any day gas in excess of Buyer's specified Maximum Daily Volume, Buyer shall inform the Seller and if the Seller is able to provide such excess gas required by Buyer from its operations, Seller shall make such excess gas available at the rate of three dollars and eight tenths cents (\$3.488) per Mcf.

If such excess gas cannot be made available to Buyer from Seller's own operations, Seller may comply with such request to the extent that excess gas is temporarily available from Seller's gas supplier, in order to provide gas which otherwise would not be available. Such excess volume taken shall be paid for at the rate of three dollars and twenty-three cents (\$3.23) per Mcf.

On any day when Buyer has been notified to interrupt deliveries, Buyer may request excess gas and to the extent such excess gas can be obtained from Seller's supplier, Buyer shall pay Seller at the rate of three dollars and twenty-three cents (\$3.23) per Mcf for all such volumes taken which would otherwise not be available.

The minimum monthly charge each billing month for gas delivered or the right of the Buyer to receive same shall be:

- The amount determined by applying the rates for the Firm Volume to a minimum monthly volume which shall be the product of fifty per cent of the specified Daily Firm Volume times thirty; except that:
- In the event of monthly, seasonal or annual curtailment due to gas supply shortage, the Minimum Monthly Charge shall be waived when the volume made available is less than 110% of the firm volume of (a) above, except that in no event will the Minimum Monthly Charge be less than five hundred dollars (\$500).

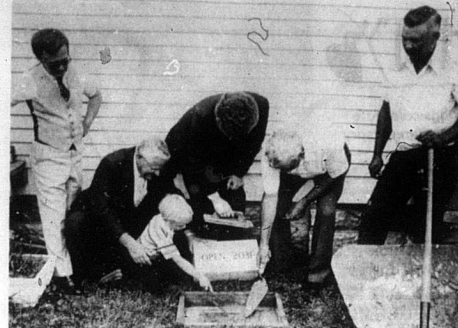
Applicable throughout the entire territory served by Columbia Gas of Kentucky, Inc., as mentioned above under Rate Schedule GS-Residential.

Interruptible Gas Service - Optional Rate Schedule IS-1 RATE	
Billing Months April Through November	\$4.150 per Mcf for all volumes delivered each month up to and including the Average Monthly Winter Volume. The Average Monthly Winter Volume shall be one-fourth of the total delivery during the preceding billing months of December through March.
Billing Months December Through March	\$3.750 per Mcf for all volume delivered each month in excess of the Average Monthly Winter Volume.

The minimum monthly charge for gas delivered or tendered for delivery shall be six hundred dollars (\$600) per billing month for each of the billing months April through November; that the Buyer contracts to take interruptible gas tendered, as available, by Seller; provided, however, that in any of such months the above rate applied to volumes tendered for delivery amount to less than six hundred dollars (\$600), then the minimum monthly charge shall be waived.

Applicable through the entire territory served by Columbia Gas of Kentucky, Inc., as mentioned above under Rate Schedule GS-Residential.

*See, Your right to know, page 12



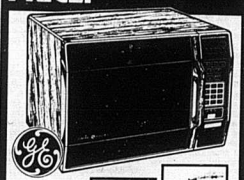
Planting time capsules

Two time capsules are being centered over in the front yard of the Mt. Zion Christian Church Sunday afternoon as the church celebrated its 150th year. The monument which was cemented on top of the capsules is to be opened by church members in 2031. The capsules contain letters written by members and friends, present church roll, a copy of the July 30, 1881 Carlisle Mercury, record of revival attendance, Rev. Paul Neal's sermon written for the celebration and the Bible he used during the week-long revival, a blue Licks Spring Water bottle and a Carlisle Bottling bottle, both of which were donated by Paul Smoot. Pictured from left are Jerry Neal of Fleming County, Rev. Neal of Tampa, Fla., kneeling and holding J.W. Neal (Jerry Neal's son), Rev. Wendell McKee, minister of the church and a junior at Cincinnati Bible Seminary, Glenn Hardin, elder and chairman of the church board, and Earl Plank who did the planning and engineering of the project.—Mercury photo.

Daniel Boone Forest offers free fire wood

The hot, humid days and nights Kentuckians have been experiencing recently have been thinking about air conditioners, fans and other ways to beat the heat. It is not too soon, however, to start thinking about the cold, bleak winter months ahead and what can be done to help cut down on the high cost of fuel needed to heat homes. William A. Williams, Timber, Fire and Wildlife Staff Officer of the Daniel Boone National Forest offers one solution. He invites persons to visit the vast forest, which covers over 66,000 acres located in portions of 22 eastern Kentucky counties, to cut firewood for home use. It is available for the taking on all seven of the Forest's ranger districts provided certain procedures are followed. The wood is given free of charge as long as it is for personal use and not sold. Before it can be cut and hauled away, a free use permit must be obtained either from the ranger on those districts the wood is located, or from the Forest Supervisor's office. Persons desiring to sell firewood to others can arrange to purchase timber by contacting any of the seven district rangers or the Forest Supervisor's office in Winchester. The harvest of firewood for home use has shown a steady increase over the forest for the past three fiscal years. A total of 1164 permits were issued in 1978. In 1979, the permits numbered 2192, and in 1980, they totaled 2,947 in number. The Forest's Recreation Staff Officer, Robert K. Sizemore, has a partial solution to help beat the sweltering heat. He suggests that persons visit the forest to take advantage of the various opportunities to relax and cool off. The many streams which run through the land once explored by Daniel Boone offer a cool trip by canoe or john boat. Swimming, water-skiing and boating at Cave Run Lake are cooling experiences as are boating and water-skiing at Laurel River Lake. A similarly like in the deep woods at such places as the Hot River Gorge, Natural Arch and the Beaver Creek Wilderness provides a chance to get away from the crowds, smog, and hot pavements of the city and the opportunity to breathe clean, cool, fresh air while observing nature's handiwork. Persons who desire to obtain a permit to cut firewood or to escape the hot, summer sun and engage in various recreation opportunities can do so by calling, writing or visiting: Morehead Ranger District, Box 10, Rothbar Hollow, Morehead, Ky.; phone 606-764-0201.

Now at Garrett's MICRO TOUCH CONTROLS AT AN AFFORDABLE PRICE



Continued from page 2
bloodmobile representative Tommy Vaughn, for financially underwriting the expense of the drive. The First Baptist Church, for providing such a helpful secretary, Diana Willis, without whom I would have been lost! The efforts and cooperation of these many people made my task as the new County Bloodmobile driver much easier, and I am very grateful. Sincerely, David C. Stancil, First Baptist Church

Cook by time or temperature in this GE microwave oven. Cook by time with the accurate 90 minute digital timer. Or let the Microthermometer™ temperature probe work for you. Ten power temperature probe works for you. Ten power levels. Program selection with audible response. Digital readout panel. Includes settings for Time Cook, Temp. Cook, Defrost, Hold/Timer, Simmer, In Cook, Temp. Hold and Memory. NOW ONLY \$369. Garrett's Furniture Phone 289-2308

HOMECOMING
Mt. Tabor Methodist Church in Fleming County
Aug. 16
Rev. James Meyer, Speaker at 11 A.M. Service
Potluck Dinner at Noon
*Special Singing in the Afternoon

The Carlisle (Ky.) Mercury, Thursday, August 13, 1981 - 7

LERMANS

COMPLETE FAMILY DEPT. STORE

BACK TO SCHOOL SPECIALS

LADIES' JEANS

- Plow boy
- California Straight
- Super Straight

JR. SIZES 3 to 15

REG. 26.99
\$27.99

Week-end Only!

\$19.99

Men's Basic LEVI'S JEANS

Straight Leg
Boot Cut
SIZES 28 thru 42

Special **\$14.88**

Levi's JEANSWEAR

Shelly Type SWEATERS

in Junior Sizes

S-M-L

REG. 11.99
\$15.99

Student Cut
26 thru 30 **\$16.99**

Boys' Saddleman BOOT JEANS

Rinsed Blue Denim
Regular and Slim

SIZES 4 to 7
SIZES 8 to 12
Student Cut
26 thru 30 **\$16.99**

Ladies' Levi LEATHER BELTS

REG. 16.78
\$3.

Boys' Reg. 14. LEATHER BELTS
SIZES 28-38
Special **\$2.**
Week-end Only

Men's No-Fault Jeans Wrangler

Boys' Reg. 14. LEATHER BELTS
SIZES 28-38
Special **\$2.**
Week-end Only

Boys' Wrangler No-Fault BOOT JEANS
Regular & Slim, 8/16
SPECIAL **\$12.99**

GOLDEN FRUIT OF THE LOOM

BRIEFS & T-SHIRTS
in packages of 3

- *Men's Briefs, Reg. 6.99 4.88
- *Men's T-Shirts, Reg. 6.99 3.88
- *Boys' Briefs, Reg. 4.29 3.88
- *Boys' T-Shirts, Reg. 4.09 4.49

V-Neck & Crew Neck

REG. 14.99
\$10.

Famous "Katz" SLEEP-WEAR
Gowns, P.J.'s, Sleep coats
Polyester-Cotton
SUEETS, IRREG. FIT
SPECIAL QUALITY
Values to **\$5.**
to **\$10.**

Bikini & Hip-hugger Panties
Values to 1.29 **2/1.50**

Girl's PANTIES

Solids & Prints
Cotton Blends
Values to 99¢

2 PRS. **1.50**

Girl's Short Sleeve PLAID BLOUSES
Polyester & Cotton Blends
SIZES 7-14
Reg. 3.29
7.99-8.99

Girl's Fashion JEANS
Reg. & Slim, 8/18
Special **\$12.**

Football Number Shirts
3/4 Length Sleeves
Men's Reg. **16.99 \$4**
Boys' Reg. **15.99 \$3**

"Converse" All-Stars TENNIS OXFORDS
Men's Sizes
7 1/2 to 12
\$13.88

Now... 2 for \$5.

Girl's Pinwale Corduroy BLAZER
Navy, Berry, Khaki
SIZES 7-14 **19.99**

Girl's Plaid SKIRTS
A-Line, Pleated, Half Circle
8.99 to 12.99

LERMANS COMPLETE FAMILY DEPT. STORE