

**50% OFF** **2nd Tire** When you buy 1st tire at regular price



**'80 VALUE**

2nd Tire low as ... **35.44**  
When you buy 1st Tire at Reg. Price of ... **70.88**

Imagine! Aramid Belted Radial Whitewall Tires Available at these Low Prices! And They're Still Backed by Our 40,000 Mile Promise!

Once You Experience the Ride of the Aramid Belted Radial, You May Never Want to Use "Regular" Tires Again!

- Aramid, the most advanced tire cord ever developed.
- Pound-for-pound, Aramid is 5 times stronger than steel to resist road hazards, punctures and cuts.
- More flexible than steel to give you a smoother, more comfortable ride than steel belted tires.
- Lighter in weight, Aramid belts allow the tire to roll easier than steel belted tires, usually resulting in improved gas mileage.

Size	Conversion	Cat. No.	Low Price	50% Off	2nd Tire	P. E. T.
MTS-13	P167514	16-9901-4	70.88	35.44	1.66	
GRS-14	P157514	16-9902-4	80.88	40.44	2.11	
GRS-14	P167514	16-9902-2	87.88	43.94	2.14	
FRS-14	P227514	16-9903-0	87.88	43.94	2.61	
GRS-14	P217514	16-9905-0	109.88	54.94	2.37	
GRS-14	P217514	16-9906-0	109.88	54.94	2.84	
MTS-13	P227514	16-9911-2	112.88	56.44	3.08	
MTS-13	P227514	16-9911-1	107.88	53.94	3.08	

**ARAMID BELTED RADIAL TIRE WARRANTY**  
**FULL 40,000 MILE WARRANTY—TREAD WEAR/UNTID 40,000 MILE WARRANTY—ROAD HAZARD**  
Full 40,000 Mile Warranty—Tread Wear/Untid 40,000 Mile Warranty—Road Hazard  
This warranty is limited to the original purchaser of a new Aramid Belted Radial Tire, which has not been damaged by accident or misuse and is used on a passenger car or light truck. It does not apply to tires used on heavy duty vehicles, commercial vehicles, or tires damaged by misuse. The tread wear warranty is limited to the original purchaser of a new Aramid Belted Radial Tire, which has not been damaged by accident or misuse and is used on a passenger car or light truck. It does not apply to tires used on heavy duty vehicles, commercial vehicles, or tires damaged by misuse. This warranty is void if the tire is used on a vehicle that is not equipped with a proper suspension system. The road hazard warranty is limited to the original purchaser of a new Aramid Belted Radial Tire, which has not been damaged by accident or misuse and is used on a passenger car or light truck. It does not apply to tires used on heavy duty vehicles, commercial vehicles, or tires damaged by misuse. This warranty is void if the tire is used on a vehicle that is not equipped with a proper suspension system.

**25% OFF**



OUR BEST BIAS-PLY POLYESTER CORD TIRE SAVE NOW! USE YOUR CREDIT!

LPS III As Low As **28.88** Reg. 39.50!

- Impact-absorbing bias ply polyester cord body Delivers a comfortable ride, top roadability!
- Poly-BD tread rubber resists road abrasions to give you excellent tread life... outstanding mileage for your money!
- Rugged 5-rib traction tread grips the road!

Size	Cat. No.	Reg.	25% Off	P. E. T.
A78-13	16-7201-0	39.50	29.62	1.77
E60-15	16-7102-0	42.50	31.87	1.71



**OUTSTANDING VALUE!**

**4 TIRES \$83 FOR**

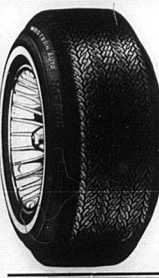
**SPECIAL OFFER ON OUR LOWEST PRICED POLYESTER CORD BIAS-PLY TIRE!**

A strong, economical tire built with polyester cord to give you a smooth ride through miles of use! Road-tugging wide stance learns up with Poly-BD tread compound for traction and impact resistance!

Size	Cat. No.	Each	Set of 4	P. E. T.
A78-13	16-5501-0	20.75	83.00	1.92
B78-13	16-5501-0	20.00	80.00	1.74
E78-14	16-5503-4	33.00	132.00	2.31
FRS-14	16-5508-2	33.00	132.00	2.31
GRS-14	16-5508-7	40.00	160.00	2.80
E60-15	16-5510-0	28.00	112.00	2.01
GRS-14	16-5515-8	38.00	152.00	2.48
MTS-13	16-5516-0	42.00	168.00	2.95



**TOUGH NYLON CORD PICKUP TRUCK TIRES**  
As Low As **37.99** each



**LOW COST 78 SERIES PICKUP TRUCK TIRES**  
As Low As **49.99** each

Size	Part No.	Price	P. E. T.
16-700-10	16-700-10	\$37.99	1.91
16-700-12	16-700-12	\$49.99	2.61

**Our Best Fiberglass Belted Tire!**  
**BIG SAVINGS! 32.88**  
As Low As

A 78 series bias belted tire, designed and built for strength, great handling capabilities, control and low cost per mile usage. Reinforced with two parallel cord body plies plus 2 stabilizing fiberglass belts to prolong tire life.

Size	Stock No.	Reg.	NOW	P. E. T.
A78-13	16-7401-0	\$45.00	\$32.88	1.76
B78-13	16-7401-9	\$32.00	\$23.88	1.85
C78-14	16-7401-6	\$40.00	\$29.88	2.03
FRS-14	16-7402-7	\$42.00	\$31.88	2.06
E78-14	16-7404-3	\$32.00	\$23.88	2.35
G78-14	16-7402-0	\$42.00	\$31.88	2.34
H78-14	16-7405-6	\$48.00	\$36.88	2.78
I78-15	16-7415-9	\$42.00	\$31.88	2.62
J78-15	16-7416-7	\$48.00	\$36.88	2.84
K78-15	16-7418-1	\$71.00	\$53.88	3.13

**TOUGH, ECONOMICAL RETREADS**

Vehicle Type	Part No.	Low Price	P. E. T.
Passenger Car	1688	16.88	1.00
Light Truck	2888	28.88	1.71

**'80 VALUE**

**35.88**



**ALL-NEW SENTRY 40 BATTERY LOW MAINTENANCE!**

- This polypropylene case provides 12% more inside space than truck "rubber" cases!
- Lead-coated plates for best electrolyte contact!
- Packed with power... for most mid-size cars!

**USE YOUR CREDIT!**

**Need a Battery? We have it!**

**MAINTENANCE-FREE TOUGH ONE 60**  
**56.88**  
Power to spare for most full-size cars with both accessories. Life-time supply of electrolyte, corrosion resistant terminals. Tough polypropylene construction.

**6.12V MOTOR-CYCLE BATTERIES**  
Sizes, voltages and terminal configurations as shown.  
**11.79**

**TROLLING MOTOR BATTERY**  
55-AMP 6V 18-300-6  
**69.88**  
Deep-cycle for trolling motors & P.V.C. Holds power over 100 hours. Made in U.S.A.  
**Reg. 77.99**

**WESTERN AUTO 10-100-800**