

Kentucky lakes fishing report

As surface water temperatures continue to climb on the state's major lakes, fishing activity is diminishing. The lake-by-lake rundown, as compiled by the Kentucky Department of Fish and Wildlife Resources:

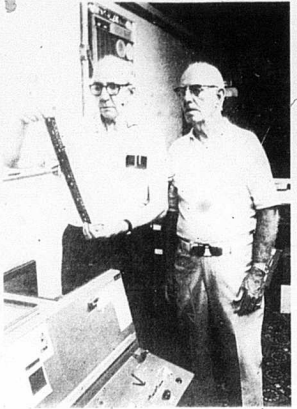
Barren: White bass fair to good on spinners and spoons in jugs and by trolling crank baits over the bluggill fair off deep banks; black bass fair on the upper lake on artificial night crawlers, of rocky points and over drop-offs; in tailwaters, trout slow; clear, stable at pool and 83 degrees.

Herrington: White bass good early and late on plunker and fly in jugs; rockfish, slow to fair drifting, big minnows in the area of the dam; black bass slow still fishing off crankfish off points; clear to murky, stable, 20 feet below pool and 79 degrees.

Laurel: Trout good at night under lights still fishing off deep banks; black gill fish in timbered coves, clear, stable at pool and 78 degrees.

Green Buggill: Fair to good in inletts and bays and over drop-offs; white bass fair early and late on surface lures and spinner baits in inletts and bays and over drop-offs, white bass fair on spinners and spoons in the area of the dam; black bass slow, white bass fair on tailwaters, catfish good, white bass fair to good, clear to murky, stable at pool and 79 degrees.

Cave Run: Murky slow trolling deep runners over main channel drop-offs and casting baits in timbered coves; black bass slow early and late on plunker and fly in jugs; nightcrawlers along the brush line in inletts and bays; white bass fair on spinners and spoons in lower lake



Benefits increase July 1

The state Department for Human Resources has increased its maximum weekly payment in unemployment benefits from \$111 to \$120. The increase became effective July 1.

Jack Waddell, acting commissioner of the department's Bureau for Social Insurance, said the payment hike resulted from an annual adjustment of the compensation rate. Benefits are tied to the average weekly wage of workers. Since wages went up in 1978, unemployment benefits were increased, Waddell said.

The First National Bank

Consolidating domestic subsidiaries of the First National Bank of Carlisle, in the State of Kentucky, at the close of business on June 30, 1979 published in response to the request of the Federal Reserve Board, 12 U.S.C. Section 450. Basis for number 9609 National Bank Number 4924 Statement of Resources and Liabilities

ASSETS	
Cash and due from depository institutions	2,178
U.S. Treasury securities	3,024
Obligations of other U.S. Government agencies and corps	714
U.S. Government securities and political subdivisions in the United States	1,319
U.S. Government securities and political subdivisions in foreign countries	982
Federal funds sold and securities purchased under agreements to resell	None
Loans: Total (excluding unearned income)	14,023
Loans: Allowance for possible loan losses	106
Loans: Net	13,918
Lease financing receivables	196
Other real estate and fixtures, and other assets representing bank premises	308
Real estate owned	410
All other assets	491
TOTAL ASSETS	29,874
LIABILITIES	
Demand deposits of individuals, partnerships and corporations	5,448
Time and saving deposits of individuals, partnerships and corporations	14,868
Deposits of States and political subdivisions in the United States	2,187
All other deposits	289
Certified and letter of credit	196
Total deposits	19,112
Total demand deposits	5,320
Total time and savings deposits	13,792
Federal funds purchased and securities sold under agreements to repurchase	None
Federal funds purchased and securities sold under agreements to resell	None
Federal loaning demand notes (note balances) issued to U.S. Treasury and other liabilities for borrowed money	603
Storage facilities and utility deposits	None
All other liabilities	622
TOTAL LIABILITIES (including subordinated notes and debentures)	20,727
Subordinated notes and debentures	196
Total deposits	19,112
EQUITY CAPITAL	
Preferred stock No. Shares outstanding (par value)	None
Common stock No. Shares outstanding (par value)	200
Surplus	280
Undivided profits and reserves for contingencies and other purposes	1,897
TOTAL EQUITY CAPITAL	1,497
TOTAL LIABILITIES AND EQUITY CAPITAL	21,214
MEMORANDA	
Amounts outstanding as of report date:	None
Standby letters of credit	1,500
Time certificates of deposit	1,500
Denominations of \$100,000 or more	None
Other time deposits in amounts of \$100,000 or more	1,500
Average for 30 calendar days (or calendar months) ending with report date:	18,862
Deposits	18,862

I, Larry Hutchinson, Cashier of the above named bank do hereby declare that the above is a true and correct statement of my knowledge and belief.

Signed: Larry Hutchinson, Cashier.

We, the undersigned directors attest the correctness of this statement of resources and liabilities. We declare that it has been examined by us, and to the best of our knowledge and belief is true and correct.

Signed: Harold K. Leavelle, President
Harold K. Leavelle
Clayton B. Hatcher, Director

Blood drawing exceeds quota

By Rev. Herman H. Kunkle

It is my pleasure to announce that Monday's bloodmobile quota of 75 units was exceeded by 20 units thus lowering the people of Nicholas County for fall free blood coverage until October 1980. 117 people came to donate. 95 were able to give blood. 13 came without appointments, several becoming first time donors. On behalf of the Nicholas County Ministerial Association I thank those people most sincerely.

90 people made appointments to donate blood but did not show for appointments for various reasons. Your good will is appreciated but think of what could have been accomplished if you had come. I ask that you please keep your appointment next time if at all possible.

The Blood Donor Program is a community effort. It is in my mind that I wish to publicly thank those who made this bloodmobile the success it was.



Helpers

The Carlisle Mercury for the interest shown and the publicity received.

Catherine (Katie) Alexander and the Rev. Mark Prevo who have given invaluable assistance both before and in helping during the blood drawing.

The Carlisle United Methodist Church for the use of their facilities.

The ladies who called the potential donors: Edith Ford Alexander, Jerrie Anderson, Beatrice Booth, Lucille Clark, Alma Clinkenbard, Alma Cloyd, Joan Conley, Phyllis Cox, Nellie Curran, Eva Henson, Suzanne Dixon, Ernestine Davis, Janie Eyster, Hurd Fry, May Gahringer, Inebell Hutchinson, Edith Kensall, Bernice Lawrence, Bertha Marshall, Ethel Myers, Virginia Parsons, Lynn Simons, Catherine Smart, Edith Smith, Cleota Snapp, and Velva Willis.

The ladies who worked at the reception table: Edith Alexander, Beatrice Booth, Alma Cloyd, Betty Heister, Bertha Marshall, and Elizabeth Tubbs.

The Shrine of Our Lady of Goodhope for the nourishment for those donating blood and the ladies who served: Joan Conley, Kay Conley, Betty Heister, Michelle Knapp, Falia Kury, Jacqueline Koury, Kelli Robinson, and Leona Thompson.

The Carlisle Christian Church for the use of their facilities for serving the Central Kentucky Blood Donor personal dinner, and...

The Nicholas County Homeowners for the delicious dinner which was served by Ruth Anderson, Edith Kunkle, and Velva Willis.

BUY

SEEKING IS BELIEVING!

Come See and Buy a Colorburst 100, Tele Ektra, the Handle and others

New KODAK COLORBURST 100 INSTANT CAMERA

THE HANDLE™ A KODAK INSTANT CAMERA

NEW POLAROID FILM PACKS

Polaroids & One-step Also Polaroid Film Packs

SALE BEGINS Wednesday, July 26 9:00 A.M. Thursday July 27 10:00 A.M. Don't miss this ONE!!

ADIOS

MAIN AT Broadway CARLISLE, KY.

SEE US OR CALL FOR DETAILS

144 Locust St. Carlisle, Ky. Phone: 289-7960

State students top standards

Kentucky students exceeded national performance standards in all but a few areas in a test of basic skills given this spring, according to a statement released today by Dr. James E. Graham, state superintendent of public instruction.

The Department of Education recently compiled data, which form the first time shows the combined performance on the tests of students in grades three, five, seven and 10 of all 181 Kentucky school districts. The comprehensive test of basic skills makes it possible for the districts to compare

local student's performances to those of the state and nation.

A total of 22,000 Kentucky students were tested. The testing was mandated by the Educational Improvement Act of 1978.

Third grade students exceeded the 77 percent average national score in eight out of nine subject areas measured by the test. The strongest performances were in language mechanics, language expression, mathematics computation and reference skills.

Kentucky's tenth grade students also compared favorably to their peers across the nation, meeting norms in all but one of the nine subject areas tested. The weakest area was reading vocabulary, in which 73 percent of Kentucky students scored in the average and above average range of performance. The figure compared to 77 percent nationally. The strongest areas were language mechanics, mathematics computation and reference skills.

The Department of Education also compiled data showing the percentage of Kentucky students who exceeded the established Educational Improvement Program screening score. That score was set to determine which Kentucky students were in need of special assistance. A program currently being developed for each local district will provide this assistance.

Ladies Dr. Scholl's Shoes (Values Up To \$28.95) Now \$7.95 Rack Sale

Buy Suit or Sport Coat at Regular Price **Second 1 for \$4.95**

Balance of Suits & Sport Coats **35% Off**

Short Sleeve Sport Shirts **Long Sleeve Dress Shirts and Ties Buy 2 at 25% Off, Third 1 is FREE**

Jeans & Casual Slacks **Buy 1 at Reg. Price Second for \$4.00**

Samsonte Silhouette Luggage Colors: Red, Blue, White, Gray & Bronco Brown

1/2 Price

Carter's Men's Clothing Carlisle, Ky.

Store Hours: Mon.—Thurs. 8:30 to 5:30; Fri. & Sat. 8:30 to 6:00

Nunn Bush Shoes Buy One Pair, get Second for a Penny

Straw Hats 1/2 Price

Back in town

Mercury publisher Warren Fisher shows Claude B. Lawrence in headlines are set in today's Mercury. Lawrence is visiting Mrs. Edith Bryant on his way to Canada for some fishing. Lawrence's sailing trips were chronicled in an article in the December 21, 1978 issue of the Mercury — Mercury photo.

78-year-old sailor anchors in Carlisle

Claude B. Lawrence dropped by the Mercury office this week on his way to Canada and a fishing trip. The 78-year-old native of Nicholas County was on his way to join his son with whom he sailed once from Port Huron, Michigan to the Grand Bahama in the Caribbean — only 77 years old. Lawrence's trip was featured in an article in the December 21, 1978 issue of the Mercury.

The septuagenarian is a walking example of the dictum that retirement doesn't necessarily mean the end of life. Since retiring, 14 years ago, Lawrence has been living the life of a sailor, usually along with his son, who swims into his fifth outfit.

Lawrence says he's never had as much fun since he retired from the oil Company 18 years ago. And from talking with him it's clear that this is one man that didn't waste away when he retired. Keeping up with his young seems to keep him young.

Lawrence is in Carlisle visiting Mrs. Edith Bryant.

What Lawrence remembers best about the Port Huron-Bahamas trip is traveling down the Erie Canal, making only three lock passages uphill and marveling that it was built by men by hand more than 150 years ago, then sailing past New York, past the same Statue of Liberty he had passed 60 years before on his way to France during World War I.

Lawrence says the Caribbean island is blessed with an ideal climate (you can sleep out any night of the year, he says), no mosquitoes and the best fishing anywhere — except possibly Canada, that's where he's heading now. He'll travel to Port Huron and then join his son and family 15 days of fishing in Canada's Georgian Bay.

It's the 143 year he's been there on the fishing excursion. The Lawrence will fish for small mouth bass and Great Northern pike in the bay, the clear, cold waters of which have transformed the pike into tigers, Lawrence says.

"Things are different now from when the British ran the island before it gained its independence in 1971," he says. "The people are much richer now that they realize their living depends on their visitors."

Lawrence says the Caribbean island is blessed with an ideal climate (you can sleep out any night of the year, he says), no mosquitoes and the best fishing anywhere — except possibly Canada, that's where he's heading now. He'll travel to Port Huron and then join his son and family 15 days of fishing in Canada's Georgian Bay.

It's the 143 year he's been there on the fishing excursion. The Lawrence will fish for small mouth bass and Great Northern pike in the bay, the clear, cold waters of which have transformed the pike into tigers, Lawrence says.

OFF THE WALL FUN-LIKE INSURANCE THE OLDER YOU GET, THE MORE IT COSTS

There are 27 million men and women in power in the world today, including 12 kings, three queens, two emperors, three princes, one grand duke, three aunts, one nutan, one life president, and one paramount ruler.

Only one insurance policy will protect you from the cost of being an "OFF THE WALL" member of the "FUN-LIKE INSURANCE CLUB."

OFF THE WALL FUN-LIKE INSURANCE THE OLDER YOU GET, THE MORE IT COSTS

There are 27 million men and women in power in the world today, including 12 kings, three queens, two emperors, three princes, one grand duke, three aunts, one nutan, one life president, and one paramount ruler.

OFF THE WALL FUN-LIKE INSURANCE THE OLDER YOU GET, THE MORE IT COSTS

Only one insurance policy will protect you from the cost of being an "OFF THE WALL" member of the "FUN-LIKE INSURANCE CLUB."

Glenn's Stoves & Appliances

Present . . .

RCA SECOND SET BONUS DAYS

Free! . . . RCA 12" "Sportable" Black & White TV set.

with purchase of any RCA XL-100 Color Console Television between **June 28 and August 5, 1979**

— See us or Call for Details —

144 Locust St. Carlisle, Ky. Phone: 289-7960

COOPERATIVES

SO SOUTHERN STATES Annual Meeting Monday, July 30 8 P.M. at Nicholas County High School

Southern States Cooperative Carlisle, Ky. Phone: 289-7166

Give a Portrait

the gift only YOU can give!

8 x 10 NATURAL COLOR PORTRAIT \$150

One Extra Charge for Groups up to the number the photographer can handle.

Carlisle, Kentucky Nicholas County Jail Main Street Saturday, July 28, 1979 Hours: 10:00 A.M. — 5:00 P.M.

olan mills