

Why coaches get gray

McGuffey's return was inspiring --but scary to watch

First things first. David McGuffey's third-second 90-yard touchdowns return of the second half kickoff sent fans scurrying to the bleachers to see if the first had ever been duplicated. McGuffey appeared to be letting the ball bounce into the end zone for a touchdown but picked it up and the one-yard-line instead. He seemed to

will his way through the first wall of defenders and make face-to-face with the last bound somewhere near the 50-yard-line. A little stutter, a little fluff, a little juggle here and there and McGuffey was traveling alone to the goal line. After Paris punched it back to take a 13-13 lead McGuffey was waiting deep

for the next kickoff. Coach Pumphrey decided it was time to remind David of a fundamental, and one that makes coaches breathe a little easier when they watch those kickoffs. "Catch the ball in the air, David," he directed from the sidelines. The freshman nodded in agreement but Paris wasn't taking any chances and kicked

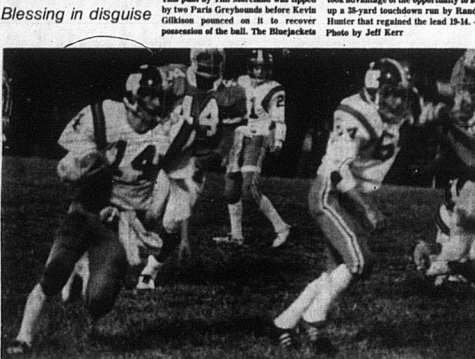
the ball to the other side of the field. Though scheduled 11 o'positions they don't give the entire picture. For example, adding up the worst records of Nicholas County's 11 opponents for this season at this stage of the game shows them to be a few percentage points over 500 at 4-27. But included in that list are six Class A schools that are either leading their district or trail by one game with no losses. Madison and Paris are battling for their district, Beechwood and Bellevue are neck and neck in theirs and Raceland leads the district that includes Nicholas with a 3-0 district mark and an overall record of 4-1. In addition Fleming County has posted a 6-2 record this season although it trails Lewis County in that district. Scott, the next opponent and a Class AAA school, has a 4-3 record. Only Bath County, Fairview and Mayville (plus Frankfort) have losing overall records. Those three teams have won a total of four games in 22 outings.



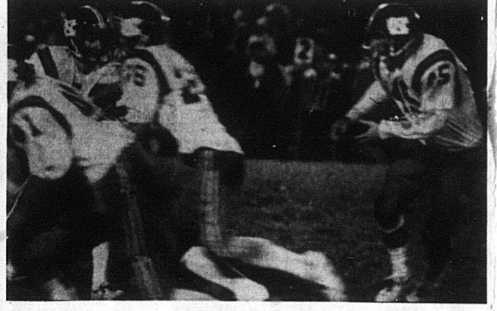
This punt by Tim Moreland was tipped by two Paris Greyhounds before Kevin Gilkison pounced on it to recover possession of the ball. The Bluejackets took advantage of the opportunity to set up a 28-yard touchdown run by Randy Hunter that regained the lead 13-14. Photo by Jeff Kerr

sports watch

Just got away
This pass from quarterback Mike Sewell ended up in Gary Williams' arms after a circus catch near the goal line just before halftime in Friday's game with Paris. A field goal attempt by the Jackets failed but two long runs in the second half produced enough touchdowns to top the Hoonds, 13-14. Photo by Jeff Kerr



Greg Wills (14) rounds the corner and looks for daylight to run to as Tim Moreland sets to block. This was Wills' only carry of the night but it ended in a solid five-yard gain. Quarterback Mike Sewell (21) is in the background. Photo by Jeff Kerr



Randy Hunter gets ready to take the ball against Paris from Mark Ruckelshaus as David McGuffey (41) and Ron Rouser (28) move out to block. Photo by Jeff Kerr

FOR YOUR CONVENIENCE
The Carlisle Mercury
may be purchased at any of the following places:

- Square Deal Grocery
- Hughes' Grocery
- Hopkins Drug Co.
- DBA Grocery
- Jerry's IGA
- Carlisle Drug Co.
- Clark's Big T-Burger
- C&G Foodtown
- Fryman's Grocery
- Millsburg Mkt.
- True Value

Blood donors needed

Time for the Central Kentucky Blood drive is drawing near. Co-ordinators, Rev. Herman Kamigie and Mrs. Katie Alexander are urging all residents of Nicholas County to help replenish the obiding supply of reserve blood. They wish to encourage new donors and commend past donors for their devotion to the program. There seems to be such a few that are shoudering the counties burden. Due to a recent outbreak of colds and flu, even loyal donors have been turned away, therefore creating a shortage and a dire need for new donors.

Blood donation is scheduled for Monday, Oct. 22, between the hours of 1 and 5:30 p.m. and 7 and 8:30 p.m. at the Carlisle United Methodist Church. If you wish to become a donor or have any questions at all regarding the program call Rev. Kamigie, 288-5602, Mrs. Katie Alexander, 288-5656 or any member of the Ministerial Association. Or call toll free 1-800-425-6228 to Central Kentucky Blood Center.

LET US FILL YOUR NEXT PRESCRIPTION

DRUG STORE

"The Drug Store"
Carlisle Drug Co.

Martin Productions Presents A Beautiful Color Portrait Package

SPECIAL
Two 8 x 10's
Two 5 x 7's
Ten Billfold Sizes
FOR ONLY
\$12.95

★ Christmas Scene & Negatives Available.

True Value

Carlisle
Friday Only
October 20
11 A.M. to 5 P.M.

Chinese coal miners tour Kentucky pits

By William Weathers



Chinese visit mines
Coal miners from the People's Republic of China inspect the huge 2550-ft shaft at Peabody Coal Company's Sinclair Mine near Drakebore. A 13-member delegation of Chinese coal mining and mechanical engineers visited the site as part of a four sponsored

By William Weathers
Before parting Monday, Chinese and American coal miners took a grinning group photograph, exchanged cigarettes and shook hands warmly. It was the end of a remarkable day in Mullholland County.

Nation's mining and mechanical engineers from the People's Republic of China had just completed a tour of Peabody Coal Company's Sinclair Mine here and were on their way to Indiana and points of further interest west. The engineers, most of them members of the China Coal Society, were in Kentucky for three days as part of an information gathering visit to the U. S. at the invitation of the National Coal Association. While here they were guests of the International division of the state's Department of Commerce. Division Director William Savage said four members of the delegation represented the China Coal Mining Technical Equipment Corp., a state trading company, and were foreign responsible for the purchase of foreign equipment. Although it is too early to know if trade agreements will emerge, Savage said his agency is interested in promoting Kentucky's economy by increasing the exportation of products manufactured in the state, thus creating jobs for Kentuckians.

"Kentucky is the leading coal producing state in the U. S. and significant amount of mining machinery is manufactured here," Savage said. "The visitors were initiated to the 'mountaintop-removal' method of stripping at first Saturday, and were shown state-of-the-art technology at the Kentucky Center for Energy Research in Lexington Sunday. Observers agreed, however, that a prime moment during the group's visit came Monday when its tour bus pulled up at the feet of the 'Super Scooper', Peabody's staggering shovel that can take 135 cubic yards of earth out of the side of a hill with one bite. To a man, the engineers had taken considerable notes that morning as Sinclair Mine Superintendent Ed Curtis reeled off such items as personnel strength, production figures and physical dimensions for the Peabody operation. Even so, they may have been unprepared for what China Coal Society Adviser Chen Tien-Fei later described as "such a big monster".

Chinese agreed that although depths varied widely in their homeland, seams were generally much deeper there. "This mentioned Manchuria, in northeast China, where the thickest seams are 80 meters, or about 260 ft. thick. As miners rose to part, Calloway said with a grin. "In 1932 I was near Manchuria." "Ah!" said Tou, nodding to his colleague Chen. "He is from Manchuria." They might just as easily have been talking about Mullholland County.

True Value

HARDWARE & VARIETY STORE
Carlisle, Ky.

YOUR LUCKY DAY
FRIDAY the 13th
SHOP THESE SPECIALS!

V&S VARIETY STORES

Mighty Match.
Scraplets
... Great Value!
disposable lighter
Bic lighter

Buy 1 at Reg. Price of \$1.39 Get Second One for 13¢ (No Limit)

FRIDAY'S SPECIALS

Bargains Galore!
Smith's Dollar & Discount

Black Cat Specials

- Group of Pantyhose 13¢ each
- Group of Miscellaneous Foundations & Slips 2 for \$1.13

Rack of All-Weather Coats & Jackets - 1/2 Price
Rack of Velour Jockey Short & Jacket Sets - 1/3 off
Rack of Robes, Loungewear & Dusters - 1/3 off

Fall & Winter Coats 10% off Now thru Oct. 14.

Abraham's Ladies Shop

PROFIT RAISING EARTHWORKS

Can You Answer "YES" To These Questions?

- Do you get the raising business?
- Do you want a business of your own?
- Do you need retirement or extra income?
- Do you have a back and/or other legal?

PERHAPS YOU CAN BECOME A WORM GROWER!

IF ACCEPTED AS A PRODUCER, WE OFFER:

- Professional Guidance
- Marketing Service
- Exchange Membership
- Complete Supplies

ACT TODAY! SEND FOR YOUR FREE BROCHURE!

Send name, address, phone, description of facilities to:

NATIONAL
WORM GROWERS EXCHANGE, INC.
615 N. STREET - BRYNMAWR, PENNSYLVANIA 19001 - (610) 254-7327

Several of the delegation spoke English well, so there was more conversational give and take than some expected. Under a warm midday sun groups of three and four mining engineers huddled to ask and answer questions about what they had seen that morning. On the high ridge of a well-grazed pasture that used to be split from a striping site, with three giant water-cooling towers of the Paradise Steam Plant in the background, the engineers got in some tech talk before settling down to Kentucky Fried Chicken and RC-Cola. Hsu Chiao-Chi, engineer for mining with the China Coal Society, got some answers about the Sinclair mine from Lee Kelce, Peabody's vice president for Ohio and Kentucky operations. A few years away Tim Powell, reclamation agronomist for Peabody, talked with Adviser Chen Tien-Fei about how you put striping land back in shape - not just in good enough shape to support a few scraggly pines, but so it'll make back.

Based on the tour bus after lunch, Powell accepted a Chinese cigarette from his associate and told him through an interpreter that he (Powell) appreciated good tobacco, having grown up on a tobacco farm. The much older Chinese acknowledged with a grin, but declined Powell's offer of a dip of snuff. For some of the group, Americans as well Chinese, the highlight of the visitors' stay in Kentucky came Monday afternoon in a small meeting room at the Sinclair site. Three senior members of the delegation and eight senior United Mine Workers decided to get together and have a talk. They filed into a 20 by 30 ft. concrete block room with a few gray steel lockers on one wall and a blackboard and some maps on another. They sat down in folding school desks that don't give grown men quite enough room. Close overhead were unpainted 2 x 4 yellow pine ceiling beams and a massive rustium-colored steel truss. The American miners wore dark olive work shirts and trousers. Their Chinese counterparts had blue-gray, two-button, medium-lapel suits reminiscent of Eisenhower-era bank tellers. Between the equally intractable groups

When questioned about wages, the Chinese engineers explained that it's nearly impossible to talk meaningful in terms of absolute money because of different living "standards". The delegates said that wages generally are lower, however. They also explained that comparisons are difficult because the government pays for such things as utilities. "In other words, everybody works for the government," said welder Don Calloway. "Yes," answered Tou. "Respectful candor prevailed. A few moments later, just before the meeting broke up, miners were discussing relative depths of coal seams. The

For halloween TRICK OR TREAT TIME!

We have what you need...

- Hallmark Cards
- Pumpkin table centerpieces
- Party Plates, Napkins & Cups
- For wall or door decorations, Halloween Glo Prints:
- Scratch Cats
- Skeletons
- Nite-Glo Ghost Cutouts
- Jack-O-Lantern Goblins

Hopkins Drug

"Your Prescription Our Speciality"

Phone 289-2274