

## Obituaries

### Supt. Elder, Mrs. Becker attend meet

**JEFFERY N. LESTER**  
Jeffery N. Lester, 18, son of Mr. and Mrs. Carlisle Lester, Carlisle, died Thursday, May 4, 1978 as a result of injuries received in an automobile accident.  
He was a member of the Fairview Baptist Church and a student at Nicholas County High School, Concert Master of the Nicholas County band and a member of the Speech, Drama and French clubs.  
Other survivors are two sisters, Mrs. Robert Hay, Mayville, Mrs. Berry Rusak, Ewing; two nieces; maternal grandparents, Mr. and Mrs. Arnold Payne, Ewing; paternal grandparents, Mr. and Mrs. Nick Lester, Ewing.  
Funeral services were held Saturday in the Fairview Baptist Church by Rev. Howard Roster with burial in Mt. Tabor Cemetery. Pallbearers were Daryl McFarland, Tracy Tolliver, Philby Rose, Wess Wortington, Wally Thomas and Eddie Koehler. Mathers-Shearer Funeral Home in charge.

**NATHAN LERMAN**  
The Lerman Bros. stores were closed Monday, May 8, due to the death of Mr. Nathan Lerman of Louisville.  
Mr. Lerman, one of the original Lerman brothers, passed away Thursday, May 4, 1978 and funeral services and burial were held Sunday.

## Kentucky's population to increase

Kentucky will have 4.07 million people by the year 2010, up 54 per cent from the 2.61 million of the 1970 U. S. Census, according to a new Kentucky population forecast by University of Kentucky geographers Dr. P. P. Karan and Dr. Wilford Bladen.  
Karan thinks that the new forecasts — with five-year county by county projections to the year 2010 — are substantially better than other existing forecasts which use only the birth, death and migration rates of each county.

The new study uses what Karan calls an "aggressive" model which is a complex mathematical computerized system to analyze environmental, social and economic factors relevant to future population growth in Kentucky counties.

"For instance," Karan said, "we took into account the coal boom in Kentucky and we ran surveys on counties to determine the inward flow of new residents. And there are counties that are more pleasant to live in because of environmental factors."

"All parts of Kentucky will grow but it looks like the biggest growth will be in the Bluegrass," Karan said. Fayette County's population will be 300,221 in 1990; 280,201 in 1980; 270,240 in 2000, and 255,401 in 2010.

"Kentucky keeps getting better and better economically and the environment will draw in many people," Karan said. "Employment is good and the coal industry has contributed to a diversified economy. Kentucky agriculture will be better in productivity. With a diversified economy of agriculture, mining, manufacturing and services, Kentucky will grow."  
If the economy depended on just one thing, something (unpleasant) would happen."

The UK geographers took much of their data from the recently published "Atlas of Kentucky" which Karan edited. "Then we plugged in each county's specific economic and environmental factors," Karan said.

Karan, whose findings will be mapped for easier reference, also is doing forecasts on income and employment in Kentucky using the "aggressive" model.

A limited number of copies of the population forecast are available from Dr. P. P. Karan, University of Kentucky Department of Geography, 1439 Patterson Office Tower, Lexington (60508), telephone (606) 257-1112.

## FOR YOUR LOVED ONE!

Contact me now in order to have a monument for your loved one erected in the cemetery before Memorial Day.

My business is in my home so I have very little overhead expense and can offer high quality memorials at a big savings. Call collect 484-2016

Mrs. William (Linda) Conley  
**Conley Monument Co.**  
8th Street - POB 134 Millersburg Ky.

## Jack Watson announces candidacy

Jack Watson of Louisville has announced his intention of running in the senatorial race in the May 23rd Democratic primary.  
Mr. Watson is a 1964 graduate of Louisville Male High School and a U. S. Marine. He attended the Martins School in St. Petersburg, Fla. and graduated at the top of his class. In 1962, Mr. Watson attained a B. S. degree and major in accounting and a secondary degree in psychology. Presently he is assistant to the owner of Poplar Hill Farm, a thoroughbred horse farm north of Lexington.  
Mr. Watson is married to the former Mary Lou Cox of Louisville. The couple have three children, two sons and one daughter.

## Fuel adjustment charge to raise during month

Bills received by retail customers of Kentucky Utilities Company during May will have a fuel adjustment charge of \$0.01181 per kilowatt-hour. The fuel adjustment charge for April was \$0.01063.  
The adjustment is applied equally to all retail customers — industrial, commercial, and residential — and represents only the difference between the cost of fuel burned during March and the cost already contained in the company's basic rates.  
With warmer weather, it is expected that customer usage will likely decrease, which could result in bills lower than those of the cold winter months even though the fuel adjustment charges are higher for May.

## Gov. reappoints two at MSU

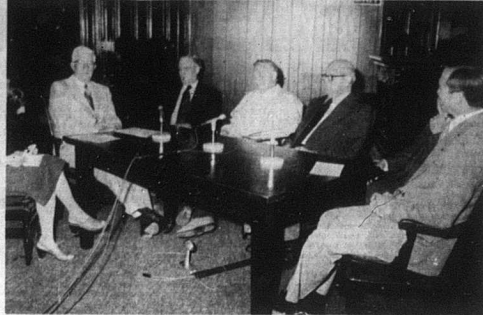
MOREHEAD — Two Eastern Kentucky businessmen have been reappointed by Gov. Julian Carroll to one-year terms on the Morehead State University Board of Regents.  
B. F. Reed of Britton and Cloyd McDowell of Harlan were reappointed to serve through March 31, 1982.  
MSU is governed by a 16-member board with eight citizen members appointed by the governor and faculty and student members elected by their colleagues.

## Workshop offered at MSU for credit

MOREHEAD — Morehead State University is offering a workshop in teaching with newspapers for one hour of undergraduate or graduate credit during Intercession.  
The course, ED 599, will meet from 5 p.m. until 8 p.m. May 17-19 and from 8 a.m. until 1 p.m. on Saturday, May 20.  
Workshop participants will develop plans and activities on using newspapers in the public school classroom. Additional information is available from Dr. Kent Freeland, 606/783-3225.

## Little League

Continued from page one  
The Minor League Baseball team. The parade will begin at 12:00 p.m. at the Elementary School finishing at the Recreation Park.  
Persons participating in the Parade should be at the Elementary School by 11:30 a.m. for pictures.



## Tax evaluation

Taping for KET "Kentucky NOW" program was held last Wednesday at the courthouse. Discussing the tax evaluation session in Nicholas County are from left, KET moderator, Attorney Joe Leary, Frankfort, Billy Parker, Bob Paul, Attorney Roger Womack, Don Hughes (partially hidden) and David Zachary—Duncan photo

## Feed Grain participants eligible for new payments

Nicholas County Farmers who participate in the 1978 Feed Grain set-aside program can receive payments for voluntarily diverting additional acreage, Eugene Letcher, Chairperson of the Agricultural Stabilization and Conservation (ASC) committee, reported. The regular ten per cent feed grain set-aside provisions remain unchanged.  
"The additional diverted acreage must equal 10 per cent of the 1978 acreage of each crop of corn, grain sorghum and barley planted for harvest, Mr. Letcher said. Also the 1978 acreage of each crop may not exceed the 1977 acreage of that crop.  
The payment for corn will be \$4.20 per bushel times the farm yield established for corn, times the actual corn acreage planted for harvest. The diversion payment for barley and grain sorghum will be \$12 per bushel, applying the same farm yield and planted acreage computations.  
Letcher said farmers will receive one-half the payment when they sign up. "The 1978 acreage of NCA crops, required set-aside, voluntary diversion, and any wheat grazing and hay acreage for payment cannot exceed the farm's normal crop acreage," Letcher said.  
For more information on voluntary diversion of any or all of the feed grain crops, contact the local ASCS office at 141 East Main Street, Carlisle, phone 285-5367.



## ASCS hours are extended this week for farmers

The Nicholas County ASCS Office will be open Thursday, Friday this week till 6:30 p.m. The office will also be open Saturday 8:00 a.m. to 4:30 p.m. Office hours are being extended this week only to aid farmers who wish to sign up for the Feed Grain Program who are not able to come in to the office during regular office hours. Sign up ends Monday, May 15.

Producers receiving wheat deficiency payments in 1977 will not be eligible in 1978 unless they sign up under the new program. All participating producers can receive one half of their payment when they come in to sign up.

Contact the ASCS Office located on East Main for additional information. Phone 285-5367.

## Johnny Duncan Show

May 25, 26 and 27

7:30 p.m. nightly

at Horsepark Inn Opry, Georgetown, Ky.

(formerly Country World)

Special guest will be Miss North Dakota, Georgia Becker, announcing her latest release, "Kentucky". Tickets are on sale at Western Auto.

**NEAL'S KEY**  
Compare  
SQUARE DEAL GROCERY FOOD STORES  
U.S. Choice **Round Steak**  
lb. \$1.39 (Boneless lb. \$1.49)

Boneless Sirloin Tip or Rump Roast u.s. Choice lb. \$1.69	Zesta 32 oz. 99¢
Fresh Ground Beef lb. 99¢	Saltines 99¢
Fischer's Wellwood Bacon lb. \$1.49	Koehler Cheddar Cheese 9 oz. 59¢
Fischer's Wieners 12 oz. pkg. 89¢	Crackers 59¢
Fischer's Bologna lb. \$1.29	Kraft 8 oz. Dressings 59¢
<b>Cucumbers, Green Peppers 5/89¢</b>	Martha White 6 oz. Pouch Mixes 2/39¢
Unclassified Wisconsin Potatoes .20 lb. bag \$1.15	7 oz. Reddi-Whip 79¢
California Oranges 4 lb. bag 85¢	Mexico 2 oz. Chili Powder 49¢
<b>Martha White Corn Muffin Mix 6 1/2 oz. 6/\$1</b>	Personal size bar (4 pk.) Ivory Soap 53¢
Oxydol 1.29	Smucker's Fresh Pack Kosher Dill Spears 16 oz. 59¢
Fischer's 12 oz. Mixed Nuts \$1.59	Smucker's Fresh Kosher 16 oz. Baby Dills 59¢
<b>Smucker's Grape Jelly 2 lb. jar 99¢</b>	Showboat No. 2 1/2 can Pork & Beans 49¢
	Liquid 28 oz. Pine-Sol \$1.39
	Hillbilly 11 oz. Biscuits 39¢
	Hillbilly Buttermilk Biscuits 39¢
	<b>We accept Federal Food Stamps</b>