

# Bluejackets lose district opener to Bourbon County

by Wendell McKee  
The Jackets came up on the short end of an 85-71 score against Bourbon County in the opening game of the 27th district tournament. It looked as though it was going to be a replica of the Jackets' 41-point loss at the hands of the Colonels earlier in the season.

The Colonels threatened to blow the game wide open early as they jumped out to a 15-3 lead. At this time, Joe Russell began to get hot but he scored only the Jackets' 13 first quarter points to cut the margin to 22-13 at the end of the period.

During the second quarter, Mike Hatton had the hot hand as he hit seven key baskets after Russell got into foul trouble. James Anderson and Dwayne Williams were beginning to get several rebounds. The Colonels lead had grown to eight points, 40-32, with 1:58 left in the half when disaster struck.

**Fight erupts**  
A fight erupted on the court when tempers flared between Colonels star Craig Summers and Bluejacket guard Clifford Thompson. Both benches emptied and when order was finally restored Dwayne Williams was ejected from the game, ending his high school basketball career two quarters early. The Colonels increased the margin to eleven, 49-38, at the intermission.

With the rebounding power of Williams severely missed, the Colonels got the game away during the third frame as they outscored the Jackets 24-17 to take a commanding 73-55 lead.

The teams played an even game in the final quarter. The Jackets did not lead to 14 points before losing by that final 18 point margin. Both teams look 60 shots in the game. Bourbon County had a big advantage here as they hit 34 of their shots for a 57 per cent clip compared to the Jackets' 24 successful baskets for 47 per cent.

**Russells lead scoring**  
Joe Russell led the jackets with 22 points. Mark Russell had 15 points, while Mike Hatton tossed in 13. James Anderson had ten tallies, followed by Clifford Thompson and Bobby Tischer with four points apiece. Dwayne Williams scored three points before his early exit. Summers led Bourbon County with a game high 20 points, Jeff Smoot followed with 21 points, while Charlie Ritzer added 11.

The Jackets closed out the season with a record of eight wins and ten losses. Coach Bobby Jenkins said he'd like to thank the fans who supported the Jackets in their tournament game and the ones who backed the jackets during the entire season.



Bluejackets Dwayne Williams jumps for rebound against Bourbon County as Joe Russell, Clifford Thompson and Mark Russell stand prepared to grab the ball.

# Kentucky afield

It's been two bad months for Kentucky fishermen. Most of our lakes and ponds are ice covered and many access roads and ramps are still impassable, even if there is open water beyond them.

The results have been some of the worst cases of cabin fever ever recorded. Most of us are really desperate to get out and catch some fish—any kind of fish.

However, it looks like most of the really good spring fishing is still about a month away. Even with a warming trend it will take several weeks for water temperatures to rise enough for white bass and crappie to get active. But there are several species of fish which can be caught now by the average angler, and you might want to give one or more of these fish a try while you're waiting for the waters to warm up.

Even during the worst of this winter's weather, fishermen love Barkley Dam were catching limits of sauger. Sauger populations have increased greatly throughout Kentucky in the last few years and more and more fishermen are becoming acquainted with this smaller cousin of the walleye.

Sauger are found in all major drainages in the state and an angler fishing with ligs below just about any dam (including navigation dams on such rivers as the Kentucky or the Ohio) would probably hook into a few sauger—or perhaps in many cases more than just a few.

Another possibility for cold water fishing is the walleye. Several lakes have good walleye populations and these fish are generally easiest to catch when they make their spawning runs into headwater streams. As soon as a stream can get into these headwater areas, we should start hearing about some good walleye catches.

The headwaters of Lake Cumberland are best known for walleye runs, but Barren, Rough and Nolichokes also have good walleye populations, and these fish should be concentrating in the headwaters now.

A third good bet is trout fishing. The department of fish and wildlife's annual trout stocking program is ready to go, with most trout streams scheduled to get fish during the latter part of March (weather permitting).

The fish and wildlife department stocks 31 streams, nine tailwaters and ten lakes with rainbow trout. In addition, the U. S. Fish and Wildlife Service stocks 11 streams in the Daniel Boone National Forest with the initial stockings scheduled for the first week of March. Eight other streams within the national forest are stocked once annually with small trout, which grow up as wild and wary as native fish.

But before you head out for a near by valid trout stamp (as well as a 1978 fishing license). The \$25 cost of the trout stamp is used to pay for the trout stocking program.

For a current list of trout streams in Kentucky and a schedule of the month they are stocked, write the Division of Public Relations, Department of Fish and Wildlife Resources, Frankfort, Kentucky 40601.

Mr. Farley, the youngest of eight children born to Milton and Rhoda Hoskins Farley, was graduated from the Estill County High School where he played trumpet in the band and played an All-State Football award, playing half-back on the school team.

A veteran of the Korean War, he is retired. "To spend all my time in Masonic and Shrine work."

He is married to the former Retha

McIntosh, and they have three children.

Leading the Lady Jackets was Pam Hopkins with 12 points. T. Roser followed with 11, and Deanna Darrell had one.

T. Crumlie led the Greyhound squad with 15 points. J. Redwin was close behind with 14. B. Wilkerson had ten, C. Stiles, A. Woodford and J. Heary each had eight and K. Galloway had four.

The second quarter brought on many more difficulties, as the Greyhounds continued to score. At the end of the second quarter, they added 15 points, while the Jackets only added four, leaving the score 58-44 at halftime.

The third quarter wasn't any better for the Jackets, as the determined Greyhounds bounced 20 more points on the scoreboard. As the quarter ended, the score was 50-31.

Along with the fourth quarter came defeat for the Jackets. The Greyhounds again added 20 points, while the Jackets only added two, to make the final score 75-31.

Leading the Lady Jackets was Pam Hopkins with 12 points. T. Roser followed with 11, and Deanna Darrell had one.

T. Crumlie led the Greyhound squad with 15 points. J. Redwin was close behind with 14. B. Wilkerson had ten, C. Stiles, A. Woodford and J. Heary each had eight and K. Galloway had four.

The second quarter brought on many more difficulties, as the Greyhounds continued to score. At the end of the second quarter, they added 15 points, while the Jackets only added four, leaving the score 58-44 at halftime.

The third quarter wasn't any better for the Jackets, as the determined Greyhounds bounced 20 more points on the scoreboard. As the quarter ended, the score was 50-31.

Along with the fourth quarter came defeat for the Jackets. The Greyhounds again added 20 points, while the Jackets only added two, to make the final score 75-31.

Leading the Lady Jackets was Pam Hopkins with 12 points. T. Roser followed with 11, and Deanna Darrell had one.

T. Crumlie led the Greyhound squad with 15 points. J. Redwin was close behind with 14. B. Wilkerson had ten, C. Stiles, A. Woodford and J. Heary each had eight and K. Galloway had four.

The second quarter brought on many more difficulties, as the Greyhounds continued to score. At the end of the second quarter, they added 15 points, while the Jackets only added four, leaving the score 58-44 at halftime.

The third quarter wasn't any better for the Jackets, as the determined Greyhounds bounced 20 more points on the scoreboard. As the quarter ended, the score was 50-31.

Along with the fourth quarter came defeat for the Jackets. The Greyhounds again added 20 points, while the Jackets only added two, to make the final score 75-31.

Leading the Lady Jackets was Pam Hopkins with 12 points. T. Roser followed with 11, and Deanna Darrell had one.

T. Crumlie led the Greyhound squad with 15 points. J. Redwin was close behind with 14. B. Wilkerson had ten, C. Stiles, A. Woodford and J. Heary each had eight and K. Galloway had four.

The second quarter brought on many more difficulties, as the Greyhounds continued to score. At the end of the second quarter, they added 15 points, while the Jackets only added four, leaving the score 58-44 at halftime.

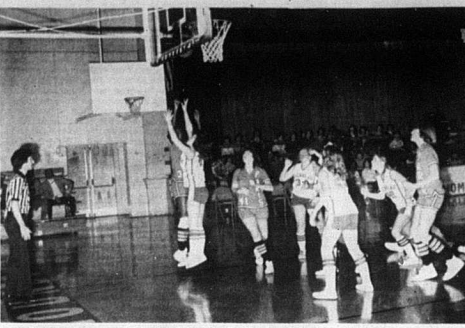
The third quarter wasn't any better for the Jackets, as the determined Greyhounds bounced 20 more points on the scoreboard. As the quarter ended, the score was 50-31.

Along with the fourth quarter came defeat for the Jackets. The Greyhounds again added 20 points, while the Jackets only added two, to make the final score 75-31.

Leading the Lady Jackets was Pam Hopkins with 12 points. T. Roser followed with 11, and Deanna Darrell had one.

T. Crumlie led the Greyhound squad with 15 points. J. Redwin was close behind with 14. B. Wilkerson had ten, C. Stiles, A. Woodford and J. Heary each had eight and K. Galloway had four.

The second quarter brought on many more difficulties, as the Greyhounds continued to score. At the end of the second quarter, they added 15 points, while the Jackets only added four, leaving the score 58-44 at halftime.



More Lady Jacket action during District play against Paris last week. Deanna Darrell guards a Paris player as she attempts to make two points.

# Brother of Countian is Potentate

Harold Kenneth Farley has been elected Potentate of Oleksa Temple in Lexington. He is a brother of Mrs. Paul Donovan of Carlisle.

Mr. Farley, the youngest of eight children born to Milton and Rhoda Hoskins Farley, was graduated from the Estill County High School where he played trumpet in the band and played an All-State Football award, playing half-back on the school team.

A veteran of the Korean War, he is retired. "To spend all my time in Masonic and Shrine work."

He is married to the former Retha

McIntosh, and they have three children.

Leading the Lady Jackets was Pam Hopkins with 12 points. T. Roser followed with 11, and Deanna Darrell had one.

T. Crumlie led the Greyhound squad with 15 points. J. Redwin was close behind with 14. B. Wilkerson had ten, C. Stiles, A. Woodford and J. Heary each had eight and K. Galloway had four.

The second quarter brought on many more difficulties, as the Greyhounds continued to score. At the end of the second quarter, they added 15 points, while the Jackets only added four, leaving the score 58-44 at halftime.

The third quarter wasn't any better for the Jackets, as the determined Greyhounds bounced 20 more points on the scoreboard. As the quarter ended, the score was 50-31.

Along with the fourth quarter came defeat for the Jackets. The Greyhounds again added 20 points, while the Jackets only added two, to make the final score 75-31.

Leading the Lady Jackets was Pam Hopkins with 12 points. T. Roser followed with 11, and Deanna Darrell had one.

T. Crumlie led the Greyhound squad with 15 points. J. Redwin was close behind with 14. B. Wilkerson had ten, C. Stiles, A. Woodford and J. Heary each had eight and K. Galloway had four.

The second quarter brought on many more difficulties, as the Greyhounds continued to score. At the end of the second quarter, they added 15 points, while the Jackets only added four, leaving the score 58-44 at halftime.

The third quarter wasn't any better for the Jackets, as the determined Greyhounds bounced 20 more points on the scoreboard. As the quarter ended, the score was 50-31.

Along with the fourth quarter came defeat for the Jackets. The Greyhounds again added 20 points, while the Jackets only added two, to make the final score 75-31.

Leading the Lady Jackets was Pam Hopkins with 12 points. T. Roser followed with 11, and Deanna Darrell had one.

T. Crumlie led the Greyhound squad with 15 points. J. Redwin was close behind with 14. B. Wilkerson had ten, C. Stiles, A. Woodford and J. Heary each had eight and K. Galloway had four.

The second quarter brought on many more difficulties, as the Greyhounds continued to score. At the end of the second quarter, they added 15 points, while the Jackets only added four, leaving the score 58-44 at halftime.

The third quarter wasn't any better for the Jackets, as the determined Greyhounds bounced 20 more points on the scoreboard. As the quarter ended, the score was 50-31.

Along with the fourth quarter came defeat for the Jackets. The Greyhounds again added 20 points, while the Jackets only added two, to make the final score 75-31.

Leading the Lady Jackets was Pam Hopkins with 12 points. T. Roser followed with 11, and Deanna Darrell had one.

T. Crumlie led the Greyhound squad with 15 points. J. Redwin was close behind with 14. B. Wilkerson had ten, C. Stiles, A. Woodford and J. Heary each had eight and K. Galloway had four.

The second quarter brought on many more difficulties, as the Greyhounds continued to score. At the end of the second quarter, they added 15 points, while the Jackets only added four, leaving the score 58-44 at halftime.

The third quarter wasn't any better for the Jackets, as the determined Greyhounds bounced 20 more points on the scoreboard. As the quarter ended, the score was 50-31.

Along with the fourth quarter came defeat for the Jackets. The Greyhounds again added 20 points, while the Jackets only added two, to make the final score 75-31.

Leading the Lady Jackets was Pam Hopkins with 12 points. T. Roser followed with 11, and Deanna Darrell had one.

T. Crumlie led the Greyhound squad with 15 points. J. Redwin was close behind with 14. B. Wilkerson had ten, C. Stiles, A. Woodford and J. Heary each had eight and K. Galloway had four.

The second quarter brought on many more difficulties, as the Greyhounds continued to score. At the end of the second quarter, they added 15 points, while the Jackets only added four, leaving the score 58-44 at halftime.

The third quarter wasn't any better for the Jackets, as the determined Greyhounds bounced 20 more points on the scoreboard. As the quarter ended, the score was 50-31.

Along with the fourth quarter came defeat for the Jackets. The Greyhounds again added 20 points, while the Jackets only added two, to make the final score 75-31.

Leading the Lady Jackets was Pam Hopkins with 12 points. T. Roser followed with 11, and Deanna Darrell had one.

T. Crumlie led the Greyhound squad with 15 points. J. Redwin was close behind with 14. B. Wilkerson had ten, C. Stiles, A. Woodford and J. Heary each had eight and K. Galloway had four.

The second quarter brought on many more difficulties, as the Greyhounds continued to score. At the end of the second quarter, they added 15 points, while the Jackets only added four, leaving the score 58-44 at halftime.

The third quarter wasn't any better for the Jackets, as the determined Greyhounds bounced 20 more points on the scoreboard. As the quarter ended, the score was 50-31.

Along with the fourth quarter came defeat for the Jackets. The Greyhounds again added 20 points, while the Jackets only added two, to make the final score 75-31.

Leading the Lady Jackets was Pam Hopkins with 12 points. T. Roser followed with 11, and Deanna Darrell had one.

T. Crumlie led the Greyhound squad with 15 points. J. Redwin was close behind with 14. B. Wilkerson had ten, C. Stiles, A. Woodford and J. Heary each had eight and K. Galloway had four.

The second quarter brought on many more difficulties, as the Greyhounds continued to score. At the end of the second quarter, they added 15 points, while the Jackets only added four, leaving the score 58-44 at halftime.

The third quarter wasn't any better for the Jackets, as the determined Greyhounds bounced 20 more points on the scoreboard. As the quarter ended, the score was 50-31.

Along with the fourth quarter came defeat for the Jackets. The Greyhounds again added 20 points, while the Jackets only added two, to make the final score 75-31.

Leading the Lady Jackets was Pam Hopkins with 12 points. T. Roser followed with 11, and Deanna Darrell had one.

T. Crumlie led the Greyhound squad with 15 points. J. Redwin was close behind with 14. B. Wilkerson had ten, C. Stiles, A. Woodford and J. Heary each had eight and K. Galloway had four.

The second quarter brought on many more difficulties, as the Greyhounds continued to score. At the end of the second quarter, they added 15 points, while the Jackets only added four, leaving the score 58-44 at halftime.

The third quarter wasn't any better for the Jackets, as the determined Greyhounds bounced 20 more points on the scoreboard. As the quarter ended, the score was 50-31.

Along with the fourth quarter came defeat for the Jackets. The Greyhounds again added 20 points, while the Jackets only added two, to make the final score 75-31.

# Flu-ridden Lady Jackets lose district game to Paris

by Kay Conley  
The Nicholas County Lady Jackets were defeated by the Paris Greyhounds, 75-31, in the opening rounds of the 27th District Tournament, held at Paris on Feb. 27. The Lady Jackets game was off to a slow start, because only six players dressed as the rest were home in bed with the flu.

The Lady Jackets went on the floor without their center Kathy Wade, and fell behind early in the first quarter. As the Greyhounds proved to be a much stronger team, they pulled ahead and the Jackets never caught up, as the first quarter ended 20-4.

The second quarter brought on many more difficulties, as the Greyhounds continued to score. At the end of the second quarter, they added 15 points, while the Jackets only added four, leaving the score 35-4 at halftime.

The third quarter wasn't any better for the Jackets, as the determined Greyhounds bounced 20 more points on the scoreboard. As the quarter ended, the score was 50-31.

Along with the fourth quarter came defeat for the Jackets. The Greyhounds again added 20 points, while the Jackets only added two, to make the final score 75-31.

Leading the Lady Jackets was Pam Hopkins with 12 points. T. Roser followed with 11, and Deanna Darrell had one.

T. Crumlie led the Greyhound squad with 15 points. J. Redwin was close behind with 14. B. Wilkerson had ten, C. Stiles, A. Woodford and J. Heary each had eight and K. Galloway had four.

The second quarter brought on many more difficulties, as the Greyhounds continued to score. At the end of the second quarter, they added 15 points, while the Jackets only added four, leaving the score 58-44 at halftime.

The third quarter wasn't any better for the Jackets, as the determined Greyhounds bounced 20 more points on the scoreboard. As the quarter ended, the score was 50-31.

Along with the fourth quarter came defeat for the Jackets. The Greyhounds again added 20 points, while the Jackets only added two, to make the final score 75-31.

Leading the Lady Jackets was Pam Hopkins with 12 points. T. Roser followed with 11, and Deanna Darrell had one.

T. Crumlie led the Greyhound squad with 15 points. J. Redwin was close behind with 14. B. Wilkerson had ten, C. Stiles, A. Woodford and J. Heary each had eight and K. Galloway had four.

The second quarter brought on many more difficulties, as the Greyhounds continued to score. At the end of the second quarter, they added 15 points, while the Jackets only added four, leaving the score 58-44 at halftime.

The third quarter wasn't any better for the Jackets, as the determined Greyhounds bounced 20 more points on the scoreboard. As the quarter ended, the score was 50-31.

Along with the fourth quarter came defeat for the Jackets. The Greyhounds again added 20 points, while the Jackets only added two, to make the final score 75-31.

Leading the Lady Jackets was Pam Hopkins with 12 points. T. Roser followed with 11, and Deanna Darrell had one.

T. Crumlie led the Greyhound squad with 15 points. J. Redwin was close behind with 14. B. Wilkerson had ten, C. Stiles, A. Woodford and J. Heary each had eight and K. Galloway had four.

The second quarter brought on many more difficulties, as the Greyhounds continued to score. At the end of the second quarter, they added 15 points, while the Jackets only added four, leaving the score 58-44 at halftime.

The third quarter wasn't any better for the Jackets, as the determined Greyhounds bounced 20 more points on the scoreboard. As the quarter ended, the score was 50-31.

Along with the fourth quarter came defeat for the Jackets. The Greyhounds again added 20 points, while the Jackets only added two, to make the final score 75-31.

Leading the Lady Jackets was Pam Hopkins with 12 points. T. Roser followed with 11, and Deanna Darrell had one.

T. Crumlie led the Greyhound squad with 15 points. J. Redwin was close behind with 14. B. Wilkerson had ten, C. Stiles, A. Woodford and J. Heary each had eight and K. Galloway had four.

The second quarter brought on many more difficulties, as the Greyhounds continued to score. At the end of the second quarter, they added 15 points, while the Jackets only added four, leaving the score 58-44 at halftime.

The third quarter wasn't any better for the Jackets, as the determined Greyhounds bounced 20 more points on the scoreboard. As the quarter ended, the score was 50-31.

Along with the fourth quarter came defeat for the Jackets. The Greyhounds again added 20 points, while the Jackets only added two, to make the final score 75-31.

Leading the Lady Jackets was Pam Hopkins with 12 points. T. Roser followed with 11, and Deanna Darrell had one.

T. Crumlie led the Greyhound squad with 15 points. J. Redwin was close behind with 14. B. Wilkerson had ten, C. Stiles, A. Woodford and J. Heary each had eight and K. Galloway had four.

The second quarter brought on many more difficulties, as the Greyhounds continued to score. At the end of the second quarter, they added 15 points, while the Jackets only added four, leaving the score 58-44 at halftime.

The third quarter wasn't any better for the Jackets, as the determined Greyhounds bounced 20 more points on the scoreboard. As the quarter ended, the score was 50-31.

Along with the fourth quarter came defeat for the Jackets. The Greyhounds again added 20 points, while the Jackets only added two, to make the final score 75-31.

Leading the Lady Jackets was Pam Hopkins with 12 points. T. Roser followed with 11, and Deanna Darrell had one.

T. Crumlie led the Greyhound squad with 15 points. J. Redwin was close behind with 14. B. Wilkerson had ten, C. Stiles, A. Woodford and J. Heary each had eight and K. Galloway had four.

The second quarter brought on many more difficulties, as the Greyhounds continued to score. At the end of the second quarter, they added 15 points, while the Jackets only added four, leaving the score 58-44 at halftime.

The third quarter wasn't any better for the Jackets, as the determined Greyhounds bounced 20 more points on the scoreboard. As the quarter ended, the score was 50-31.

Along with the fourth quarter came defeat for the Jackets. The Greyhounds again added 20 points, while the Jackets only added two, to make the final score 75-31.

Leading the Lady Jackets was Pam Hopkins with 12 points. T. Roser followed with 11, and Deanna Darrell had one.

T. Crumlie led the Greyhound squad with 15 points. J. Redwin was close behind with 14. B. Wilkerson had ten, C. Stiles, A. Woodford and J. Heary each had eight and K. Galloway had four.

The second quarter brought on many more difficulties, as the Greyhounds continued to score. At the end of the second quarter, they added 15 points, while the Jackets only added four, leaving the score 58-44 at halftime.

The third quarter wasn't any better for the Jackets, as the determined Greyhounds bounced 20 more points on the scoreboard. As the quarter ended, the score was 50-31.

Along with the fourth quarter came defeat for the Jackets. The Greyhounds again added 20 points, while the Jackets only added two, to make the final score 75-31.

Leading the Lady Jackets was Pam Hopkins with 12 points. T. Roser followed with 11, and Deanna Darrell had one.

T. Crumlie led the Greyhound squad with 15 points. J. Redwin was close behind with 14. B. Wilkerson had ten, C. Stiles, A. Woodford and J. Heary each had eight and K. Galloway had four.

The second quarter brought on many more difficulties, as the Greyhounds continued to score. At the end of the second quarter, they added 15 points, while the Jackets only added four, leaving the score 58-44 at halftime.

The third quarter wasn't any better for the Jackets, as the determined Greyhounds bounced 20 more points on the scoreboard. As the quarter ended, the score was 50-31.

Along with the fourth quarter came defeat for the Jackets. The Greyhounds again added 20 points, while the Jackets only added two, to make the final score 75-31.

Leading the Lady Jackets was Pam Hopkins with 12 points. T. Roser followed with 11, and Deanna Darrell had one.

T. Crumlie led the Greyhound squad with 15 points. J. Redwin was close behind with 14. B. Wilkerson had ten, C. Stiles, A. Woodford and J. Heary each had eight and K. Galloway had four.

The second quarter brought on many more difficulties, as the Greyhounds continued to score. At the end of the second quarter, they added 15 points, while the Jackets only added four, leaving the score 58-44 at halftime.

The third quarter wasn't any better for the Jackets, as the determined Greyhounds bounced 20 more points on the scoreboard. As the quarter ended, the score was 50-31.

Along with the fourth quarter came defeat for the Jackets. The Greyhounds again added 20 points, while the Jackets only added two, to make the final score 75-31.

Leading the Lady Jackets was Pam Hopkins with 12 points. T. Roser followed with 11, and Deanna Darrell had one.

T. Crumlie led the Greyhound squad with 15 points. J. Redwin was close behind with 14. B. Wilkerson had ten, C. Stiles, A. Woodford and J. Heary each had eight and K. Galloway had four.

The second quarter brought on many more difficulties, as the Greyhounds continued to score. At the end of the second quarter, they added 15 points, while the Jackets only added four, leaving the score 58-44 at halftime.

The third quarter wasn't any better for the Jackets, as the determined Greyhounds bounced 20 more points on the