

Rodeo

Cutting horses will try to show many of the nation's top cowboys at the Longhorn World Championship Rodeo

Saltwell

Mr. and Mrs. R. J. Doyle and family, Mrs. Reynolds Gausman has been quite busy Sunday with Mr. and Mrs. Orville Doyle.

The Land Bank

The American farmer builds two things better than anyone else in the world. He builds the next generation, passing along a special kind of wisdom... respect for the soil, honesty, independence, and faith in the future.

The Bank of Generations



In Carlisle Deposit Bank Bldg. Tuesdays, Ph. 289-7340 Stan Harmon, Branch Manager Ph. 445-9451

IMAGE PAINT

Our GUARANTEE To You On Each Can GUARANTEED EQUAL-IN QUALITY TO THE FINEST MADE. Will cover any color with only one coat when applied at a rate not to exceed 450 square feet per gallon.



ALSO AVAILABLE IN LATEX SEMI-GLOSS ENAMEL!

We can custom mix over 1409 colors! For anything in paint from basement to roof visit our paint department

Reid & Vice, Inc. Ph. 289-5279 and Ph. 724-5454 Carlisle, Ky. Mt. Olivet, Ky.

Farm and Home

County Extension Agents Mike Phillips Mrs. Sharon A. Wilson Mrs. Margie Wilson

Two new burley varieties

Tobacco crops are pretty much finished for last season with only 13 per cent remaining to be marketed.

Attention has already shifted toward the upcoming crop. With two new varieties to be on the market, it will be the best interest for some farmers with specific problems with black shank and black root rot to pay particular attention to these new burley tobacco varieties.

Ky 15 and Ky 17 were released last spring to Kentucky seedmen for seed increase by the Kentucky Agricultural Experiment Station and the Agricultural Research Service of the USDA.

Both varieties have more resistance to major diseases than varieties that growers have been planting, and both are high-yielders of quality leaf, points out G. B. Collins leader of the Experiment Station research project.

Ky 15 and Ky 17 have been tested for the past three years under actual farm-growing conditions across Kentucky as well as neighboring states.

Ky 17 is especially good news to tobacco farmers who have black shank disease problems. This disease is widespread through the burley growing area and is considered to be one of the major problems for the tobacco grower.

Ky 15 has high resistance to black root rot, wildfire, mosaic virus and fusarium wilt.

Both Ky 15 and Ky 17 are uniform standing varieties that should help Kentucky burley growers produce higher yields of high quality leaf acceptable to the industry.

Seeded and fumigated seed can increase production. An interesting item crossed my desk this past week and I felt I would like to share it with you.

It concerns a new foliar spray consisting of sawdust and fish that sprayed on tobacco increased the poundage per acre 754 pounds, in one specific test.

Mr. and Mrs. Garry Hollar and Chris visited Mr. and Mrs. Donald Stone and Denise, Carlisle on Sunday afternoon.

They also visited Mrs. Lena Ham at Johnson-Mathers Nursing Home.

Mr. and Mrs. Billy Knippenberg and family and Mr. and Mrs. Craig Knippenberg of Lexington spent the past Sunday with Mr. and Mrs. Julian W. Knippenberg and others of Lexington.

Miss Joanna Mattox spent a few days the past week with Miss Rita Myron of near Jacktown.

Mrs. Layne Hollar visited Mrs. Sterling Hollar on Friday evening.

Mr. and Mrs. Kenneth W. Gausman visited Mr. and Mrs. Garry Hollar and family in Friday night.

Our community extends sympathy to the family of Mrs. Edna Fryman, who passed away this past week at Harrison Memorial Hospital.

Also the family of Mr. Victor Beckett who passed away at Veterans Hospital Lexington.

Miss Tracey Hollar has been ill the past week with chicken pox at the home of Mr. and Mrs. Fred Hollar.

Mrs. Freddie Gausman has been ill this week at her home but is improving at this writing.

Not only did the weight increase but the quality increased as well. In government grade, the treated tobacco graded one to two dollars higher than did the untreated counterpart.

Although a relatively new product, the benefits of sawdust in agriculture have been known for some time as well as the use of fish as fertilizer dating back to the American Indians.

Apply as a foliar spray the benefits are many times greater due to the fact the absorption rate is much higher through the leaf than through the root system.

This new product was also applied to other crops such as soybeans, corn, wheat, cotton, hay, pastures and vegetables with yield increases from 15 per cent to 40 per cent.

Nicholas County farmers who are selected to participate in a statewide safety program to analyze the number of farm accidents that occur in a one year period.

Volunteers will be calling on random selected farm families to obtain this information. This information will be compiled at the University and then compared by county and by state.

No accurate figures are currently in existence as to how high the accident rate is on farms across the nation.

Although farming is believed to be one of the most hazardous occupations we now have, this new survey will have figures to either prove or disprove this theory.

One good thing hopefully to come from this survey is the analysis of the accidents pertaining to moving equipment.

Equipment manufacturers are going to analyze this data and if possible and feasible redesign portions of their equipment to make it safer for the operator.

If you are called upon to be a volunteer to collect this information or if your farm is selected to give this information, your full cooperation will be appreciated by the Extension Department.

Newspaper advertising is the quickest and most economical way for a retailer to inform his market of what he has to sell.

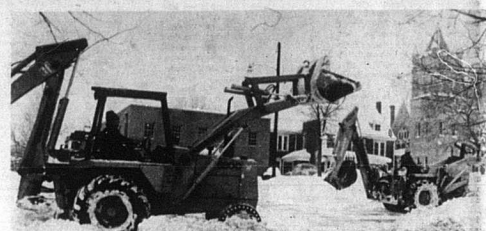
PATIENT-AIDS WHEELCHAIRS
Easy-Roll and Standard Models

Guaranteed for 3 years against defects in material or workmanship. Complete with brakes and footrest. The only wheelchair with built-in tilt in seat and back for maximum comfort. Maneuvers easily with little effort. Folds compactly for travel or storage.

Easy-Roll Model
Standard Model
Rental rates on request.

Carlisle Drug Co.
THE CARLISLE DRUG COMPANY
CARLISLE, KY.

Snow removal crews at work



Heavy equipment operators, under the leadership of City Superintendent Gayle Vanlandingham, work to remove snow last Thursday on Locust Street.

Hard workers!



Snow disappears!

Eight National Guardsmen were activated over the weekend to assist the City of Carlisle with its snow removal. After completing the job in Carlisle, the guardsmen worked all day Sunday in Millersburg.

Walker & Wolverine SHOES
in stock at

Southern States Carlisle Cooperative
Phone 289-7144
SOUTHERN STATES COOPERATIVE AGENCY

IN QUOTES

IT IS EASIER TO STAY OUT THAN TO GET OUT.

— MARK TWAIN

Burley industry awaits quotas announcement

By Bennett Roach

For Burley Growers Assn. As the tobacco markets near the end of the sales season the burley industry is awaiting word from Washington on the 1978 crop quotas and outlook.

The 1978 marketing quota for burley tobacco is to be announced some time before Feb. 1 by the U. S. Secretary of Agriculture.

Now under study by USDA tobacco program specialists are the views and recommendations of the growers, dealers, manufacturers and others, as submitted Tuesday, Jan. 10 at the annual burley quota hearing at Lexington.

Without exception all growers, handlers and buying interests heard from at the meeting favored continuation of 1977 marketing quotas for the coming year. Many expressed satisfaction over the upturn in prices since the holidays, and spoke confidently of a continued strong demand for U. S. burley.

The Burley Tobacco Growers Cooperative Association's president, David J. Williams, gave the co-op's position as strongly in favor of keeping last year's quota. He cited government figures as showing supply and demand at a desirable level.

The booming export trade in U. S. burley was noted by Frank B. Snodgrass, vice president and managing director of the Burley and Dark Leaf Export Association, who cited another record high mark of 117 million pounds sold abroad in the calendar year 1977.

He added: "It appears that the export buyers have been quite active in the 1978 phase of the market."

But Snodgrass warned that increasing supplies of foreign produced burley are giving us competition, both in the domestic and export market, and at a price less than half of U. S. burley.

"Therefore, it is urgent that we maintain high quality since we can no longer compete price-wise in the world markets."

Quota setting each year is a basic part of the system of production

controls favored by burley farmers. Quotas are adjusted in line with the changing supply/demand situation. Views submitted at last week's quota hearing are a major factor, but many other elements also govern determination of a national marketing quota. These include figures of the past 10 years as to yield, production, carry-over, supply, and annual disbursement.

If the USDA should leave the national quota unchanged from 1977, it would: "be pleasing to most burley belt representatives whose views were heard at the quota meeting."

"In line with disappearance (domestic use plus exports) for marketing year ending Sept. 1, 1977 (810 million pounds, or 7 million over 1976),

"take cognizance of last year's jump in burley exports, now totaling 117 million pounds (about 17% of burley sales);

"reflect belief that supplies are well in line with demand, as evidenced that the 1977 crop just marketed is considerably smaller than 1976 crop;

"show satisfaction over volume of loan borrowing by Burley Tobacco Growers Cooperative Association, and the Burley Stabilization Corp., totaling 37 million pounds (all burley stocks 1973 and earlier have been sold);

"But a decision by USDA to reduce the national quota would: "indicate concern over mounting supplies, now above the desired level of 2 1/2 years' supply (stocks are now sufficient for 4 1/2 years use);

"regard as a threat the buildup of carryover and foreign burley stocks, now up 9% (Oct. 1) from year earlier; "take note of a 3% drop in domestic use of burley for cigarettes; estimated cigarette production down 3.3% from year earlier; manufacturers using less leaf per cigarette;

"take note of record low output of smoking tobacco, a drop of 6% pct. to 43 million pounds.

FRANKFORT — The Kentucky High School Athletic Association (KHSAA) has been granted an extension of time to put into effect changes in its constitutional bylaws. The State Board of Elementary and Secondary Education granted the extension in a meeting Tuesday.

The compliance date has been extended to June 30. The original deadline was Jan. 1.

The board had told the athletic association in September that it must revise its constitution to allow membership of all certified personnel in the KHSAA's public or private schools on its board of control.

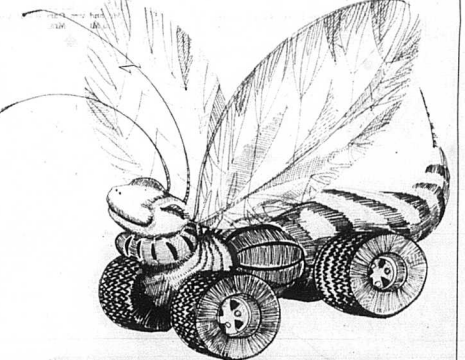
Quota setting each year is a basic part of the system of production

ment of a woman on the board of control was prevented by limiting the board's membership to high school principals, because there are few women principals.

In other actions, the board: — After meeting in executive session, appointed Kenneth Anderson of Burlington as a member to the Boone County Board of Education, when that group failed to replace board chairman Bernard Hogan in the required time.

Approved recommendation from the Bureau of Instruction concerning merit ratings.

Reviewed administrative regulations.



3-Way Relief

WHEN THE NEW CAR BUG BITES

Get the itch for a new car? A First National Bank new car loan works three ways to provide an effective cure. Easy to take. Just tell your car dealer you prefer financing with First National Bank. He'll do the rest. Fast acting. We know you don't want to wait, so we hustle. And we don't hassle over your age, sex, or complexion. Gentle on your mind. If you wish, an auto loan may include credit life insurance. Then, you'll know your family is protected in an emergency.



First National Bank soothes the new car itch three ways. Get your free highway emergency kit while the supply lasts—Ask for details!

Member F.I.C.