

Opinion Coin of the realm

Elsewhere in today's Mercury the reader will find a letter from the Kentucky Commissioner of Revenue to Mr. Joseph J. Leary, the attorney engaged by the Nicholas County taxpayers. The commissioner wanted his letter to Mr. Leary run gratis but the management insisted upon the coin of the realm, language that any department of revenue should be able to understand.

The Commissioner mentions that a proposal for settlement in the tax assessment dispute put forth by citizens last Monday is unacceptable and then offers a proposal of his own which is equally unacceptable.

Any sort of a lasting peace in this matter is going to come from the courts, not the bureaucracy. The Commissioner in this case is only an agent of the executive branch of the Kentucky government, following the

intentions of the legislature, which has virtually ignored the property tax problem since 1965. The case seems to us as a classic example of citizens seeking relief from the judiciary and availing themselves of the checks and balances inherent in our Constitution.

The letter mentions that continuing the 1977 suit would be more productive than filing a new suit concerning the 1978 assessments but it seems to us that both suits are out from the same bell.

The idea is to pretend what is seen as just assessments. It is a middleman business, this mixer of government and the so-called national "taxpayers' revolt" is trying to get across is that government is responsible to the people from

Memory Lane

Armed forces Reserve Medal won by seven Carlisle Guard members

Thursday, August 11, 1968
Dr. Thompson P. Scott and El. Clay Herries will be presented Mammie Jo year pins and life membership certificates. At a fish fry to be held tonight (Thursday) 7 p.m. C.D.T. at the Nicholas Fish and Game clubhouse, W. R. Bustin, Jr., master of Dougherty Lodge No. 85, F. & M. has announced.

Final preparations are now being made at the Carlisle City School for the opening of school September 5. Sgt. Tobey Rose has announced. All teachers have been hired and assigned.

Seven members of Carlisle's "A" battery of the 34th Field Artillery Battalion, Kentucky Army National Guard were awarded the Armed Forces Reserve Medal last Monday night for ten years faithful service.

Those "short time" assessments are a major part of the present problem are they not? We feel that the Department of Revenue could establish a speed record for assessments if allowed.

Millon Galbraith has accepted a position as principal of the Wallace High School, Hartsville County.

Elva R. Kendall has returned from a week's trip to Lake Junaluska, N.C., where he attended a Methodist meeting.

DEATH — Mrs. Melvina Flench was born in a home owned by Miss Lucy Novell caught fire, but was extinguished by the volunteer fire department before any damage was done.

DIED — W. T. Murray, 61, at his home on Deaneville Hill near Carlisle, Monday morning. — Tupman Stephens in Knoxville, Tenn., Aug. 11. — Mrs. Sara Ann Peaback, 61, at her home near Sharpsburg, Wednesday. — William Fleming Storey, 82, at his home Sunday. — Mrs. Malissa Shannon, 94, at her home near Sandy Hook, last Tuesday. — W. L. Anderson, 78, at his home Sunday. — Mrs. Susan Anderson Rye, 78, Saturday night at her home in Paris.

BIRTHS — Born to Mr. and Mrs. Everett Curran, a daughter, Cheri Bostia, July 26. — To Mr. and Mrs.

Ouch, that sting!

Check the attic for future references — football season is about to begin! Once again it's almost time to get out the old "school-colored" (blue and white) blankets, bring the RAH, RAH, RAH's to the field and cheer the Bluejackets through a successful and victorious season. This year, although we've been forewarned that it is one of rebuilding and reconstruction, the season is going to be tough competition. The lineup is built of youth and determined, as well as well-versed and veteran athletes which would lead nothing better than to add the Bluejackets to their tallies, but providing that we show our support and stay behind the Jackets throughout the season and cheer them through the errors and the tribulations as well as

through the wins, the other teams may as well dream on. Support is what leads teams to victory. Let's give them a double dosage this year.

and in well worth all the support and Friday nights we can offer. There is sportsmanship which quickly makes its presence known at all games when there is a loser and a winner, there is a physical health derived which is immeasurable, and there are scholarships and the chance at becoming a "pro". Perhaps the most important avenue that sports opens up is the time it gives where he has coached in previous years. Ask any member that has played against Coach Pumphrey, they'll know who the big, gruff guy is! Just then again it is no doubt because they still feel a smarting from a past Bluejacket.

Agree or not Country in sad shape columnist points out

By S. C. Van Curen
FRANKFORT — Our country is in a sad state and the citizens must suffer to the year in order to enjoy an evening in control of government, from the local, state and federal level, are fighting among themselves.

The mayor of Kentucky's major city lies about his whereabouts when his constituents are in need of help. The Democrat Party in Kentucky resigns under pressure from two elected officials and is not being questioned about a car his family got from the state.

President because the president fired one of his friends. Massachusetts Senator Teddy Kennedy, because political party members were against the President's plan for national health legislation. The senator wants his own party over the president's proposed plan. No energy legislation has been enacted. Nothing has been enacted in an effort to control inflation, and there are a string of other legislation that is being questioned.

Several deals with shady circumstances have been cancelled in state government. The Democrat Congress crucified Lyndon Baines Johnson when he was president and now they are trying to crucify Jimmy Carter just because he is from the South. He is not a member of the Eastern Establishment or a member of the Kennedy clan.

As a Republican, I ought to be jumping up and down with glee, but my country and my state comes before my political party. Upon prevailing policy in the Eastern Establishment, every effort, whether be Republican or Democrat.

Our United Nations delegate contradicts our Secretary of State on international affairs. Responses to our demands make a statement one day and

TRAFFIC IS THE... Avoid those jams

As the school year begins, we will state again need to try especially hard to keep our ears and eyes open for possible traffic jams and hazardous traffic situations as we travel in and about Carlisle.

The traffic trends to be a terrific problem for those coming through out of town on Highways 22 and 36 — even more so during the hours when school buses are in and out of town. Buses are mixed in with people going and coming from work. The intersection of these roads poses a great danger but all the complaining in the world won't bring us a traffic light until the

state agrees there is a need, so we will just have to live with it and be extra careful in that area.

One good rule that needs to be work is the two-second rule suggested by the Shell Oil Company. The rule says that when traveling behind a car, find a marker and count the seconds it takes to reach that marker. If it is less than two or two seconds slow down.

Smart drivers realize that a motorized vehicle is a lot stronger physically than its driver and that accidents only take one neglecting second to occur. Try to be a safe driver, drive to stay alive.

Kentucky reflections... 'Good for the dog'

23ton
by George Street Boone
David Harman, that mythical, shrewd if unlettered philosopher, observed in a simpler time that a reasonable number

of fleas were good for a dog — that they kept him from brooding over being a dog.

A contemporary observer of the political scene complains that aircondi-



tioning has deprived us of a relief that hot weather used to bring to the populace. When the weather grew too hot in Washington, or in Frankfort, wherever, people took to the mountains or to the seashore and benign neglect was given an opportunity to work a bit of magic. But now, when even golf carts are being air-conditioned, we find ourselves in an atmosphere of continuing crisis. This summer we may observe a circumspet approach by Louisville's Board of Aldermen to the Stansbury problem with the importation of a Samuel Deib to advise how best to conduct an investigation. We've seen the jousting of political aspirants jockeying at Fancy Farms and elsewhere for an advantageous position in the next electoral sweepstakes, and may see a return of the investigation of the Martin Luther King assassination.

Letters

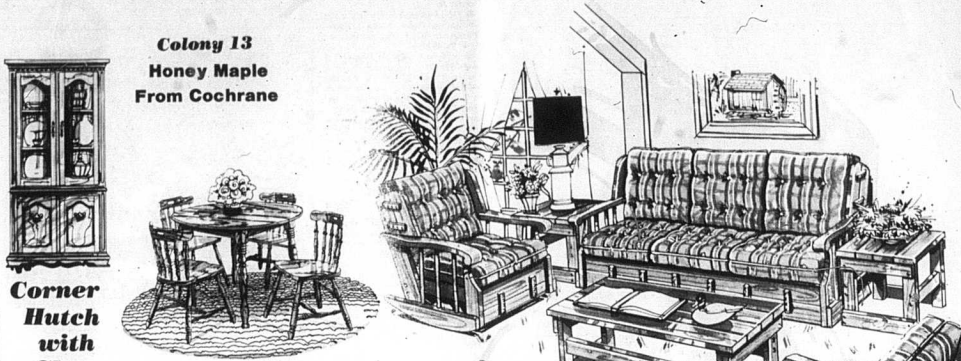
The Carlisle Mercury (USPS 090-820) Established 1867 Phone (606) 289-2464 Published every Thursday at 234 Locust Street, Carlisle, Nicholas County, Ky. 40311 Postage paid at Carlisle, Ky.

Warren R. Fisher, Editor-Publisher; (Mrs.) Katherine T. Fisher, Managing Editor; (Mrs.) Janie Duncan, Assistant-to-the-Publisher; (Mrs.) Brenda K. Phillips, Copy-Writer/Operator.

Subscription Rates: One year in Kentucky, \$6.30, sales tax included. Out-of-state, one year, \$8.00. MEMBER: The Kentucky Press Association

NATIONAL NEWSPAPER PUBLISHERS FOR THE YEAR 1978 WINA SUSTAINING MEMBER-1976

Add Warmth to Your Home this Fall with Quality Home Furnishings from Garrett's



Colony 13 Honey Maple
Friday from Cochrane

Corner Hutch with Glass Doors \$299.00
4 Side Chairs 42" Round Table with 1 Leaf \$239.96

Living Room Suites Reg. NOW
2-Piece Early American Vinyl 399.95 333.00
2-Piece Herculon Plaid 499.95 399.00
2-Piece Nylon Floral 499.95 399.00

Dining Room Suites
7-Piece Hardwood Drop Leaf Maple 649.00 488.00
9-Piece Keller Oak Table, 6 chairs, Buffet & Lighted Hutch 1279.00 977.00

Bedroom Suites
Bassett 3-Piece Suite Oak Finish 419.95 299.00
Athens 3-Piece Suite Salem Maple 459.95 367.00

CHAIRS Choice of Colors 139.95 99.00
Vinyl Recliners 99.95 77.00

Brass Beds—Twin 239.95 189.00
Full 269.95 219.00
and Queen 299.95 249.00

One group of Gifts and Accessories
1/3 to 1/2 off

SPACE SAVER
Bunk House Beds
Pine
\$388.00
Phone 289-2308
(We Service what we Sell First)