

## Obituaries

**MICHAEL WARREN HEWSON**  
Michael Warren Hewson, 23, son of R.W. and Betty Dudley Hewson, 11 Ellison Drive, Winchester, died at 1 p.m. Thursday, July 14, 1977 at the U.K. Medical Center after a long illness. He was born in Clark county, and was a member of the First Baptist Church. Other survivors are his brother, Mark Hewson; two sisters, Ms. Carolyn Hewson O'Neil and Mrs. Fay (Kitty) Faulstich; grandparents, Mrs. Catherine Dudley and R.W. Hewson Sr.; two nephews, Michael and Wesley Faulstich; an aunt, Mrs. E.W. McClure; three uncles, Monte Dudley Jr., all of Winchester; Mike Dudley, Cincinnati; Andy Dudley, Carleisle.

Funeral services were held at 1:30 p.m. on Saturday, July 15, 1977 at the Sotheby Funeral Home, Winchester by Rev. Dr. Wayne Price. Burial in Winchester Cemetery.

**JAMES V. CROUCH**  
James V. Crouch, 94, husband of the late Adeline Irvin Crouch, died at 4:30 p.m. Saturday, July 16, 1977 at the St. Joseph Hospital, Lexington after an extended illness. He was a native of Bath county, son of the late James Nicholas and Katherine

Vaughn Crouch. He was a retired farmer, and a member of the Bethel Christian Church. He is survived by several nieces and nephews including Mrs. William Jeffrey, with whom he made his home. Services were at 11 p.m. Monday, July 18, at the Mathers-Shearer Chapel, conducted by the Dr. Jack J. Early.

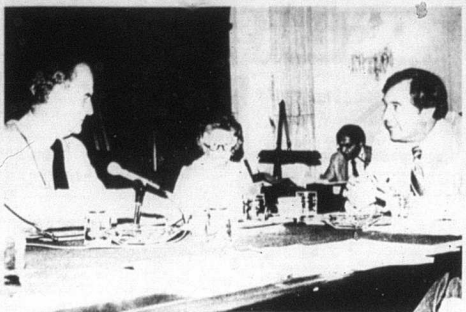
### Yeiser named

Continued from page one  
American Farm Bureau Federation and serves on the Farm Bureau's Poultry Committee. He is a graduate of Western Kentucky University and has done graduate work at the University of Kentucky. Mr. Yeiser grew up on his family's farm in Daviess county. He also owns three farms in Clark county where his sons assist him in producing beef cattle, hogs, tobacco and corn.

Interment in the Longview Cemetery. Casketbearers were Tom Robertson, Joe Whitten Crouch, Bruce Crouch, Lige May, Horace Marshall, Paul Van. Honorary casketbearers were Jack DeHouwer, Lee Terry, Chaslie Shannons, Ed Hickey, Stanley Myers, Douglas Matthews.

### KU to sell \$2 million shares

FRANKFORT—The Kentucky Public Service Commission has authorized the Lexington-based Kentucky Utilities Company to sell \$2 million in shares of common stock, according to a July 12 decision. The commission noted that the stock sale would be used for construction expenditures. The matter was discussed at a July 12 hearing in Frankfort.



RAIL ABANDONMENT HEARINGS—Senators George McGovern of South Dakota and Walter (Doe) Huddleston of Kentucky are shown at a recent hearing before the Senate Agriculture subcommittee on production, marketing and stabilization of prices, of which Huddleston is chairman. The subject of the hearing was proposed abandonment of rail lines in rural agricultural areas. Huddleston and McGovern are speakers.

### Automobiles

- '77 Olds Cutlass Supreme, 5-dr. h.t., 11,800 miles, full power
- '76 Ford LTD Brougham, 5-dr. full power, 16,000 miles.
- '76 Chrysler Cordoba, full power, 11,500 miles.
- '76 Chev. Impala Custom Coupe, full power.
- '76 Mercury Mustang Station Wagon, 3 seat, full power, 21,000 miles.
- '76 Monte Carlo, full power, red.
- '76 Buick Lesabre Custom, 4-dr. full power.
- '75 Ford Elite, 5-dr., h.t., full power.
- '75 Monte Carlo Landau, full power.
- '74 Chev. Sport Van, V-8, A.T., P.S., air.
- '74 Chev. Impala Coupe, Nicholas county car.
- '73 Buick Century Regal, 5-dr. h.t., full power.
- '73 Ford Gran Torino, 4-dr., full power, 50 engine.
- '73 Monte Carlo, full power.
- '73 Chev. Blazer, Deluxe Model, 4-wheel drive, 4-speed, P.S.
- '73 Olds 98, 4-dr., h.t., full power.
- '71 Chev. Nova pickup, V-8, A.T., P.S.
- '69 Buick Lesabre, 4-dr., full power, Nicholas county car.
- '69 Chevrolet, 5-dr., h.t.
- '62 Chev. Nova pickup, V-8, 4-speed with camper top.

**Millard Chandler**  
Phone 724-5700  
MT. OLIVET, KY.



Martha Blaser, Kentucky Historical Society (KHS) registrar, makes minor repairs on an 1870 silk brocade and tulle wedding dress. The KHS needs such fashions from the 1870s and 1880s for a Victorian display, to be installed this summer in the museum's permanent exhibits. The display, like others at the museum, will illustrate the social history of Kentucky. Examples of other items needed for the exhibit include the turn-of-the-century high-top shoe. Those who wish to contribute clothing to the museum's collection should contact Gen. William Hunter by writing the Kentucky Historical Society, P.O. Box H, Frankfort, Ky. 40601, or by phoning (502) 364-2616. —Kentucky Department of Public Information photo

### Myers Monuments

Cemetery Lettering & Cleaning  
Phone: 267-5051  
Albert Myers, Owner P.O. Box 3 Ewing, Ky.  
Formerly Maysville Memorial Sales

### COOPERATIVES

Free enterprise with a difference

SOUTHERN STATES  
**Annual Meeting**

DATE: Tuesday, August 2, 1977  
TIME: Business Meeting at 7:30 P.M.  
PLACE: Nicholas County High School  
POINT: Carlisle, Kentucky

All members and patrons are invited to attend and hear reports on Southern States and local operations. Plan to take part in the business of VOTER cooperatives.

**Southern States Carlisle Cooperative**  
Phone 271-7116 Carlisle, Ky.  
SOUTHERN STATES COOPERATIVE AGENCY

## Low income families may qualify for up to \$250 toward utility bills

FRANKFORT—Low income Kentucky families may qualify for up to \$250 in payments for fuel and utility bills incurred during the past severe winter. Through the Special Crisis Intervention Program enacted recently by Congress, the Kentucky Department for Human Resources was allotted \$4.5 million from a national pool of \$200 million for distribution among low-income people burdened by high energy costs.

In most instances, Human Resources will forward payments for eligible families directly to the utility company or to the supplier. The application period begins this week and ends Aug. 31. Available on a first come, first served basis until the funds are exhausted, the payments will be made for households with incomes no more than 20 per cent above the national poverty index. The program will provide assistance to two classifications of needy households, emphasizing the special problems of the elderly and other persons living on fixed incomes.

Those people whose utilities have been shut off or are faced with a threat of discontinuance or are currently unable to obtain service may be eligible for payments of up to \$250," said Commissioner Gail S. Hucker of the department's Bureau for Social Insurance.

The second category provides direct cash allowances of up to \$50 for households which prove they are enduring financial hardships as the result of having paid energy bills since Oct. 1, 1976.

To qualify for the special payments, households must meet specific income standards which begin at about \$300 a month for a single household with 100 increments for additional family members.

The maximum monthly income standard for a family of four is approximately \$600. Farm households may qualify at a slightly lower income level.

To ensure delivery of payments, utility companies must agree to reconnect services without charging a security deposit and must offer a deferred payment plan.

Mrs. Hucker said department officials have met with all major utility and fuel suppliers to familiarize them with the program. Community action agencies have also been contacted and requested to forward referrals of needy families.

Applications for the special utility payments will be taken at local Social Insurance Bureau offices throughout the state. Mrs. Hucker said each applicant should provide records of all fuel and utility expenses in addition to proof of total household income. Eligibility workers will make determinations based on information provided and verification of bills and expenses. Utility companies must confirm payments and outstanding obligations for each applicant.

All applications must be submitted and approved on or before Aug. 31," Hucker said. "Because of this extremely short time span established by the federal government, we must have all necessary information from each applicant before the deadline."

Cost production is expected to increase from 603 million tons in 1974 to about 1040 million tons in 1985. However, production will not increase this fast if long-term utility demand is uncertain and if major environmental and transportation issues are not resolved.

## NEAL'S KEY

Compare  
SQUARE DEAL GROCERY FOOD STORES

FRESH GROUND  
**BEEF**  
lb. 79¢

First Cut Pork Chops lb. \$1.10  
Center Cut Pork Chops lb. \$1.50  
¼ Pork Loin Sliced Free lb. \$1.29  
Young, Tender Beef Liver lb. 69¢  
Armour Pan-Size Bacon \$1.10  
Armour Patio Pups lb. 99¢

PARAMOUNT SWEET PICKLES 32 oz. 89¢  
BAMA GRAPE or APPLE JELLY 18-oz. 59¢  
KEEBLER CLUB CRACKERS 16-oz. 69¢  
JIF PEANUT BUTTER 12-oz. 69¢  
LOG CABIN SYRUP 24-oz. \$1.00  
Hi-C FRUIT DRINKS 46-oz. 49¢  
DAWN DISH LIQUID Gt. Size 79¢  
DELMONICO CAPELLINI 16-oz. 43¢  
FISHER'S MIXED NUTS 12-oz. \$1.29  
COMET CLEANSER 21-oz. 39¢  
R.C. COLA, DIET RITE COLA 8 pk-16 oz. \$1.00

STOKELY TOMATO CATSUP 14-oz. 3/1  
PERSONAL SIZE IVORY BAR SOAP 4/55¢  
ROYAL PRINCE YAMS No. 3 squat can 49¢

WELTHY COOKING  
**APPLES**  
3 lb. bag 75¢

CHOLITA  
**BANANAS**  
lb. 21¢

YELLOW  
**CORN**  
6 ears 59¢

Purina  
**DOG CHOW**  
\$5.29  
25 lb.