



Christmas dinner held

City Club elects officers

Carlele City Club held a meeting Sunday, Dec. 11, for the purpose of electing officers. The following members were installed...

Advertisement for Abraham's Ladies Shop featuring a religious illustration of a woman and child. Text includes 'Let us rejoice in loving adoration as we celebrate and remember the miracle of Christmas.'

Advertisement for Home Hardware featuring a 'Gift Time' section with lists of items for him and her, and a promotion for a free lamp given away Christmas Eve.

Farm and Home

ONE SOLITARY LIFE

He was born in an obscure village. He worked in a carpenter shop until he was 30. He then became an itinerant preacher...

Your Christmas Ham and "The 34-hour Fry"

Every year cases of the 34-hour fry put a damper on the holidays for some Kentucky families. Often the trouble is traced not to the log, but to staph toxin in that delicious Christmas ham.

Kentucky reflections

Can recall when the period seemed of interminable length, you are still young. If the two holidays seem separate by scores of months...

Christian Church holds activities

The Carlele Christian Church's Christmas activities have been in progress throughout the month of December. Programs included special music by the Junior Choir...

Merry Christmas from all the members of the Nicholas County Health Care Auxiliary

In Grateful Appreciation To The Whole Community For Your Generous Support of Our Projects to Benefit The Hospital and Nursing Home and Facilities

Court news

County Estimation Agents Ella Paffel, Mrs. Sherron A. Wilson, Mrs. Margie Wilson.

Good Sanitation Matters Prepare the ham with clean hands, or wear plastic gloves if your hands are cut or scraped. This is important, because staph infection can start with you.

Staph grow in large numbers in your nose, your throat, and in skin infections such as pimples, cuts and boils. So you may be doing nothing you can keep from contaminating the meat.

Always wash hands, utensils, and counter tops after handling meat to avoid cross-contamination.

Cooking Temperature When you cook your Christmas ham, make sure it reaches an internal temperature of 170 degrees F. You can do this by using a meat thermometer, or by rooking the ham for 25 to 30 minutes per pound at an oven temperature of 300 to 325 degrees F.

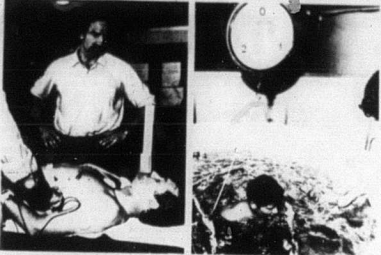
Pat Lohover Ham Refrigerator After the meal, store the left over meat in the refrigerator right away. Don't leave it out while you sit around watching, because staph germs multiply fast.

QUARTERLY COURT Paul Hanney d/b/a Western Auto of Carlele vs Kathy Saunders and Donald Saunders, suit for \$223.24 claimed due on account interest and costs.

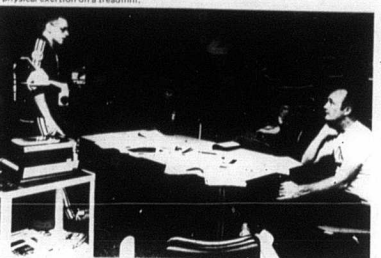
Paul Hanney d/b/a Western Auto of Carlele vs Elmer Booth, suit for \$112.36 claimed due on account plus interest and costs.

CITY POLICE COURT John D. Dale, expired inspection sticker. Damined.

Large advertisement for LERMANS Gift Headquarters featuring various Christmas specials like sport shirts, Christmas patterns, sweaters, and coats with 20% off discounts.



Dr. Bryant Stamford from the U of L exercises physiology lab watches as State Police Commissioner Ken Brandenburg has his heart beat monitored after physical exertion on a treadmill.



Dr. Tom Collingwood of the Bureau of Training explains to State Police Sgt. Mike Duncan and Bill Kline and Capt. Edgar Moss how to determine their own fitness programs after the pre-evaluation and field tests.

Advertisement for Cynthiana Motor Co. featuring 'GLAD TIDINGS' and 'A SYMPHONY OF WISHES' with illustrations of angels. Text includes 'Great peace have they that love. Trumpeting our wishes that all the seasons of your life will be filled with peace and love.'

Advertisement for Hunt's Ashland Service Station featuring a 'Symphony of Wishes' illustration and text: 'FOR A VERY MERRY CHRISTMAS! Hunt's Ashland Service Station'.

Bristlecone pine tree reveals Europe older than thought

WASHINGTON — The world's oldest living thing — the bristlecone pine tree — has contributed a new concept of European history.

By making radiocarbon dates with growth rings from the tree, scientists have discovered that Europe is much older than previously imagined.

The great stone tombs dating from 4000 B.C. making them the oldest buildings known to exist in Europe. Spanish tombs have proved older than the tombs in Crete from which they supposedly were modeled.

High Preceded Greeks Carvings on an Irish tomb at Newgrange also were made well before any comparable achievements by the Greeks.

"We now know, too, that three thousand years before the Greeks, the Romans, or the Celts, European farmers had discovered the principles of crop rotation and were using gold to make precious objects," reports Dr. Colin Renfrew in the November National Geographic.

A professor of archeology at England's University of Southampton, Dr. Renfrew points out that all this contradicts the long-accepted theory that the earliest stone tombs and temples and the practice of metalworking began in the great cultures of ancient Egypt and Mesopotamia, the traditional "cradle of civilization."

Cells Contain Carbon All living cells contain radioactive carbon 14 in proportion to the amount in the atmosphere. When cells cease to absorb radiocarbon, the quantity trapped within them begins to dwindle at a known rate through radioactive decay.

When radiocarbon dating was developed in the 1940s, it was assumed that the proportion of carbon 14 in the atmosphere, and hence in all living things, had started decreasing.

Dr. Hans E. Suess of the University of California at San Diego plotted radiocarbon dates for hundreds of years and said that before 1000 B.C. the dates tended to fall increasingly short of the actual ages.

A tree ring known to date from 1200 B.C., for example, yielded a radiocarbon date of only 1060 B.C.—340 years too young. The conclusion was that radiocarbon dates at least 3000 years old were being dated too late.

Armed with this knowledge, Dr. Suess produced the first tree-ring calibration chart, converting radiocarbon dates to calendar dates. The date of some European tombs and tombs back 800 years. In a single breathtaking sweep across Europe the traditional lines of Crete and Mycenae and the cultures of early prehistoric Europe were revised.

Mr. Cherry to succeed Bruce Denbo The University of Kentucky Board of Trustees (Dec. 11) approved the appointment of Kenneth Cherry as director of the University Press of Kentucky.

Mr. Cherry, currently editor in chief and associate director of the University of Tennessee Press, will succeed Bruce Denbo, who will retire June 30. Mr. Cherry will assume his duties July 1.

Advertisement for True Value Hardware & Variety Store featuring a 'CLEARANCE SALE' with 50% to 75% off on various items like candles, paper tableware, and gift wrap.

Advertisement for Presto Fry Baby deep fryer featuring a 'Veteran death benefits told' headline and an illustration of the fryer.

Advertisement for AM/FM Clock Radio featuring an illustration of the clock radio and a price of \$19.99.

Advertisement for FM/AM Table Radio featuring an illustration of the table radio and a price of \$18.18.

Advertisement for Old Spice COLOGN featuring an illustration of the cologne bottle and a price of \$2.62.