



Ken Urloge, hospital-earning home administrator, was presented a gift certificate by the employees of the two facilities during the annual Christmas party and awards night dinner held Saturday night at Carver Country Club.

**Recognition**

Mrs. Elizabeth Ellington was presented an award in recognition of her 20 years of service at the Nicholas County Hospital. The award was presented by hospital board chairman Rev. Herman B. Kamlage.



**Tied for honor**

Mrs. Sharon Duncan and Mrs. Mary Catherine Kanipe tied for the honor of "Most Valuable Employee of the Year." Mrs. Duncan also received the "Most Congenial Employee of the Year" award. Both awards are given after vote of fellow employees. Mrs. Kanipe received the same award in 1976. —Mercury photo.



Mrs. Maxine Smoot and Mrs. Thelma Morris accepted awards for ten years of service during the hospital-earning home annual Christmas dinner Saturday night. Mrs. Ruby McKee was also recognized for ten years of service.

**Ten and 15 year**

Mrs. Lillie Bowles and Mrs. Lela Gates were recognized for 15 years of service during the annual hospital-earning home Christmas dinner Saturday night. Rev. Kamlage, hospital board chairman is pictured with the ladies.



**Five year**

Clarence Card, Mrs. Sue Carwell, Mrs. Georgia Gilvin and Mrs. Virginia Crossan received awards for five years of service Saturday night. Marlon George was also recognized for this award.

**Joining Santa with our bountiful thanks.**

**Merry Christmas and Happy New Year!**

**Kissick's Auto Repair & Body Shop**

*It's Later Than You Think... so think of Christmas Gifts...*

- ✓ Perfumes
- ✓ Colognes
- ✓ Toiletries
- ✓ Gift Sets
- ✓ Timex Watches
- ✓ Hair Brush Sets
- ✓ Billfolds
- ✓ Cameras
- ✓ Decorations
- ✓ Flash Cubes and Bulbs
- ✓ Hallmark Cards
- ✓ Pipes

**Russell Stover CANDIES**

**Hopkins Drug Co.**  
Your Prescription our speciality

Open 8 a.m. to 12 Noon Monday, Dec. 26.

**It Pays to Fight!**

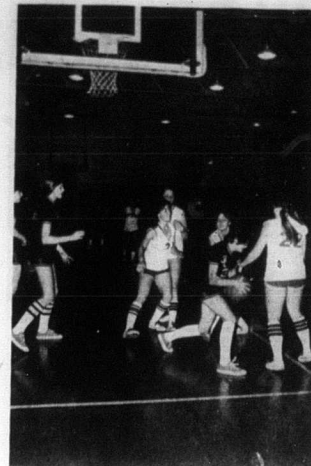
It's important to know that the best way to fight winter's cold is not to raise the thermostat setting. That just wastes energy.

Energy costs are still climbing. Nobody likes it, but there it is. Every day, it becomes more expensive to generate and deliver electric energy. Costs are rising for pollution control devices, fuel, equipment, poles and wiring. Your electric cooperative has no choice. These costs have to be passed along to consumers. You. So you pay for the electricity you waste.

If there are cracks and openings that allow heat to escape from your home, it's as if you are trying to heat the entire community. So make your home airtight, and you'll save both energy and money. Install tightfitting storm doors and windows.

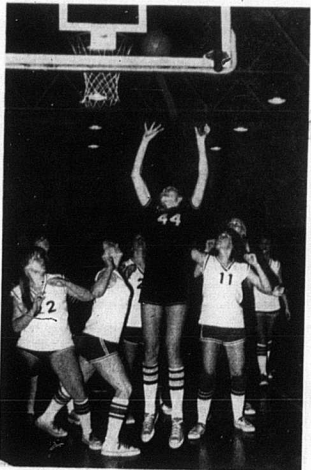
If you can't do the whole house at one time, start with the doors and windows that face the direction in which the wind attacks your home. But start fighting now. Then finish the job. Your savings will soon cover the cost, and then it's all saving from then on.

**Fleming-Mason Rural Electric Cooperative**  
Flemingsburg, Ky.



**Lady Jackets lose to Fleming**

Deanna Darrell (center) was high scorer Friday night during the Nicholas County-Fleming County game. She had 19 points, but the Lady Jackets lost 56-29. Pam Hopkins earned nine, Tammy Keiser and Kathy Wade four, Becky Berry two, and Cathy Mitchell one.



**Nothing to do but watch**

Fleming County player, Darlene Mitchell, scores two points during the Friday night game. The Lady Jackets lost two other games earlier in the week. Pendleton 45-13 on Monday and Mayville 69-28 Thursday night. —Kay Coaley photo.

**GREETINGS**

May happiness and peace be forever abundant in your home... a Merry Christmas to all!

**Sears Roebuck Co.**  
Paris, Ky.

**ALL HAIL THE NEWBORN KING!**

**W. J. Alexander Welding Shop**  
Concord, R.

**Nicholas succumbs to Pendleton**

For the second straight game, Nicholas Co. played a fine game against a good team only to succumb in the last few minutes. The Pendleton Co. Wildcats defeated the Bluejackets 42-48 in a game that was much closer than the score indicated.

The first quarter saw the Jackets hit 64 per cent of their shots in a season. The Wildcats outscored the Jackets 2-2 in the waning minutes of the initial period to go on top 12-11.

The Jackets held their own in the second quarter but could gain no ground. The Wildcat lead remained at eight points 20-31 at the half. Nicholas Co. outshot Pendleton Co. percentage-wise but the Wildcats had 15 more shots than the Jackets.

The second half was composed of Nicholas Co. cutting the lead to six points and the Pendleton Co. would spurt out to a ten point advantage. Late in the game with the Jackets trailing by as many as ten points, they had to go for the ball, thus committing many fouls or leaving a Wildcat with an open shot. This enabled the Pendleton squad to win by the final margin of 14 points. Mark Huddell led the Jacket scorers with 17 points. Joe Huddell added 10 tallies. Clifford Thompson, Mike Hat-

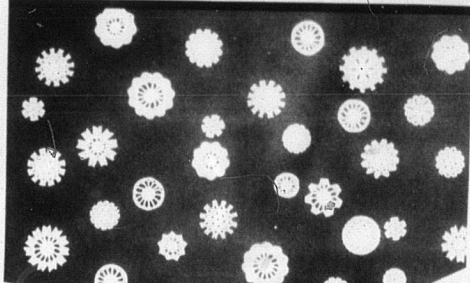
ton, and Dewain Williams each scored ten points apiece. James Anderson, the only other player to score, had five points. Guard Steve Wood led the Wildcats with 28 points and Tommy House added 13.

The variety lost another game last Wednesday night as they were beaten by Mason Co. 24-41. The "B" team also dropped two games during the week. They were defeated by Mason Co. in a 43-60 thriller and lost to Pendleton Co. 43-53.

**Peace On Earth**

May this glorious season reflect the spirit of love, in every heart and home. Many thanks.

**The Heritage Giftique**



**As Snow Comes Down, Bills Go Up.**

Your electric bills may be higher this winter than over the past few months, because you use more electricity in different ways.

**Heating systems work overtime** in cold weather. Chances are motors for pumps and fans are running on constantly. The blower on your furnace is electric. The more heat you require, the higher the cost of circulating it.

**Lights may burn longer** as you get up in the dark and come home after dark.

You may stay home more during leisure hours, using electricity for everything from cooking bigger meals to watching more TV.

**To minimize energy costs, we suggest you:**

- Clean filters of forced-air systems monthly. Dirty filters restrict air flow.
- Close the damper on your fireplace when it's not in use. Heat pours up an open chimney.
- Make sure storm windows and doors fit properly and keep them closed as much as possible.
- Install adequate insulation and set your thermostat at 68 degrees.

**KENTUCKY UTILITIES COMPANY**  
Electricity. Use It Wisely!

**New Deal Tobacco Warehouses, Inc.**

**No. 1-320 Virginia Ave.**  
**No. 2-845 Angliana Ave.**  
**Lexington, Ky. 40508** Phone (606) 254-1414

We at New Deal Tobacco Warehouses would like to wish all of our customers and friends a Merry Christmas and Happy New Year.

We are now open to receive your tobacco and have first sale after the holidays. We will be selling Jan. 4, 5 and 6.

We closed with a strong market and expect it to be strong on opening day. For the best deal sell with New Deal Tobacco Warehouses.

**Owned and Operated by**  
**Marshall Cox, Irma Clancy, T. W. and Jane Hayes**

Our Nicholas County representative is  
**Charles Ring, Phone 289-5672**