

# Opinion

## Remembering the larger family

As we write our holiday shopping lists this year, let's be sure to include some neglected members of the family to whom we all belong — the human family. The gifts they most need are hope, health and the chance to live a normal life.

The true meaning of Christmas is giving to someone else as Christ gave himself by coming into the world. The neglected need Christmas more than anyone else. Think of something nice to do for one of them, and then do it. It'll help both of you have a merrier Christmas. It need not cost any money — a visit, a kind word or two, a "Merry Christmas" greeting — any of these kindnesses can add so much to improve the lot of another.

May we, the staff of The Carlisle Mercury with each of you the Merriest, Happiest, and Most Blessed Christmas ever!

*Walter R. Fisher*  
*Ray Fisher*  
*James H. Fisher*  
*Paul W. Fisher*  
*Linda S. Fisher*  
*Bonnie S. Fisher*

## Christmas a short time away

With Christmas a short time away, children anxiously await Santa's visit. They dream about all those things they hope Santa won't forget the ones they especially want.

Christmas morning, it's an experience every child should have. The Salvation Army, with the help of many community volunteers, provide free toys to many families who would miss the luxury of Santa's visit when the children's scarcely a joy equal to what they will have around the tree.

parents to determine need, and prepare a large assortment of toys which parents can choose for their children. By remembering The Salvation Army at Christmas you will be remembering that family who needs a helping hand. Sharing is caring!

Volunteers wrap the gifts, interview



Christmas morning, it's an experience every child should have. The Salvation Army, with the help of many community volunteers, provide free toys to many families who would miss the luxury of Santa's visit when the children's scarcely a joy equal to what they will have around the tree.

## Letters

To the Carlisle Mercury: I am grateful for this opportunity to bring warm holiday greetings to your readers from the students, faculty, staff and Board of Regents of Morehead State University.

This has been a good year for the University and we have learned a great deal about how to better serve the needs of schools, local government, business and industry and other organizations in Eastern Kentucky. And, perhaps most importantly, we have made important strides in improving our academic programs to provide even better career preparation for our students.

I said when assuming the presidency nearly a year ago that I welcomed comments and suggestions on any aspect of Morehead State University. I am very much committed to that proposition today. We are grateful for support and encouragement and hope to become closer in the years ahead. It is a privilege and pleasure for MSU to serve our fellow Kentuckians.

Sincerely,  
Morris L. Norfleet  
President

## DESIDERATA

GLACIALLY AMID THE NOISE & HASTE, & REMEMBER WHAT PACE THERE MAY BE IN SILENCE. AS FAR AS POSSIBLE WITHOUT surrender be on good terms with all persons. Speak your truth quietly & clearly; and listen to others, even the dull & ignorant; they too have their story. Avoid loud & aggressive persons, they are vibrations to the spirit. If you compare yourself with others, you may become vain & bitter; for always there will be greater & lesser persons than yourself. Enjoy your achievements as well as your plans. Keep interested in the changing fortunes of time. Exercise caution in your business affairs, for the world is full of tricky. But let this not blind you to what virtue there is; many persons strive for high ideals; and everywhere life is full of heroism. Be yourself; especially, do not feign affection. Neither be cynical about love; for in the face of all avarice & dishonesty it is preeminent as the grass. Take kindly the counsel of the years, gracefully surrendering the things of youth. Nurture strength of spirit to shield you in sudden misfortune. But do not distress yourself with imaginings. Many fears are born of fatigue & loneliness. Beyond a wholesome discipline, be gentle with yourself. You are a child of the universe, no less than the trees & the stars; you have a right to be here. And whether or not it is clear to you, no doubt the universe is unfolding as it should. Therefore be at peace with God, whatever you conceive Him to be, and whatever your labors & aspirations, in the noisy confusion of life keep peace with your soul. With all its sham, drudgery & broken dreams, it is still a beautiful world. Be careful. Strive to be happy.

## ROCK TRACKS

IAN ANDERSON OF JETHRO TULL is a real trouper. Although stricken with laryngitis during a concert at New York's Madison Square Garden last weekend, he switched to instruments instead of vocals on the group's stand-by numbers and played with brioze in bringing the house down.



DIANE KEATON scheduled to record a rock album in Boulder, Colorado. And if you think it's odd that Diane is into rock, what will you say when you find out that actor star FELLE has also recorded an album. Appropriately enough, it's called "My World Is a Ball," and the beautiful back-up by SERGIO MENDES (who plays the mellowed harp, Careful, though) is a real gem. It carries a tune as well as the lyrics are all in French.

## Convenient parking now a reality for those pleading their cause at the 1978 General Assembly

by S. C. Van Oran  
FRANKFORT — Kentuckians coming to the 1978 session of the General Assembly to plead their cause at the 1978 General Assembly will find a convenient parking place than in many years past.

The new six-story parking garage has 104 parking spaces that are supposed to accommodate the present state personnel and allow some space for visitors when it is combined with present surface spaces around the Capitol and the Annex.

The million structure was dedicated last week by Gov. Julian Carroll as the second event of the day after he had dedicated a \$6.5 million connector road from U. S. 127 that leads to the new facility.

The new four-lane highway will relieve the congestion on U. S. 60 from the west side of town that leads to the Capitol and downtown Frankfort. There never seems to be enough parking space in South Frankfort in the Capitol area during sessions of the General Assembly, and state workers have had problems to recent years even when the legislature is not in session.

The out-of-town visitors are the one with the worst problem for state employees have usually occupied all of the parking spaces before the visitors get to Frankfort. The Finance Department said 216 spaces will be reserved on the second floor of the new garage for legislative members. While there are only 138 members of the legislature, 100 in the House and 38 in the Senate, the other spaces apparently will be reserved for their aides.

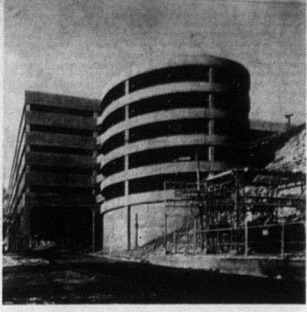
A Finance Department spokesman said the new facility will accommodate about 46 per cent of the present employee parking around the Capitol and the Annex, but a legislative session in late February and early March at the Nicholas County 4-H Council at the Achievement Program this week. County Attorney Charles M. Cox was elected president of the Kentucky Attorneys' Association at the annual meeting in Louisville recently.

The Rev. H. W. Raborn, chairman of the Nicholas County Memorial Library board, has announced that the library will be closed for an indefinite period while arrangements are made to move the headquarters of the courthouse. Mrs. Kinzball Booth and Mrs. Bernice M. Hahn entertained with a shower Saturday night at the Booth home honoring Mrs. Robert Castle (Miss Sara Nell Beaman), a recent bride.

Mrs. Miss Phyllis Jean McNeill to L. Terry Makolm Hagan, a new computer center being constructed for the Finance Department to relieve traffic congestion on East Main, a narrow four-lane highway that carries all of the traffic through the area before Interstate 64 was completed to bypass this city.

Such government department in the Annex and the Capitol will be assigned 60 per cent of the new spaces in the parking garage. Three elevators in the garage will transport the people to the surface or to a tunnel that will lead to the Annex.

The legislature has been assigned conference rooms and additional space in the Annex for this session of the General Assembly while state offices have been moved from the Annex to other state facilities in Frankfort. Much of the new space for the legislature was made available when Human Resources personnel were moved to the new building on East Main.



A view of the parking garage which opened Tuesday, Dec. 13 from the hillside below, the \$4.5 million structure gets more imposing. The garage was built into the hillside below the Capitol to avoid detracting from the Capitol skyline.

## 20 and 40 years ago

Thursday, December 26, 1957  
Mrs. Nellie Brayfield, teacher and 4-H leader at Nicholas County, was the recipient of a special plaque and a gold pin given for 28 years as a 4-H leader, by the Nicholas County 4-H Council at the Achievement Program this week.

County Attorney Charles M. Cox was elected president of the Kentucky Attorneys' Association at the annual meeting in Louisville recently. The Rev. H. W. Raborn, chairman of the Nicholas County Memorial Library board, has announced that the library will be closed for an indefinite period while arrangements are made to move the headquarters of the courthouse.

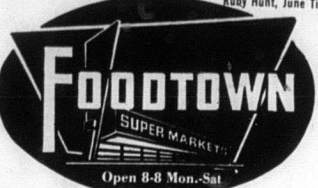
Thursday, December 26, 1937  
Dougherty Lodge No. 65, Carlisle, has elected the following officers: W. M. Ed F. Barber; S. W. Rev. C. V. Crabb; J. W. W. P. Hester; Treasurer, J. C. Horton; Secretary, K. Veach; S. D. Dr. G. T. Cowan; J. D. Alexander; Steward, E. C. Pfanzelt and M. C. Shearer; Tyler, John P. Ross; chaplain, Rev. C. A. Shearer.

## Mercury Vapors

Official time according to NOAA winter officially began at 6:24 p.m. EST on Wednesday, Dec. 21. The chill factor and wind Tuesday morning were something else, when I awoke I started out with a light coat, the temperature a balmy 48 degrees, an hour and one half later I sought a heavy winter coat as the mercury slid down the scale.

Money, money, money  
An article that came to my attention recently stated that some government officials were probably wondering who uses the \$100 bill. Here we don't see as many \$100 bills as we do \$20 bills, but according to the article there are at least 200 million \$100 bills in circulation, and it represents the fastest growing bill in the entire federal currency output.

Other points of interest were:  
—That the penny and half dollar be eliminated, and the dollar coin be reduced in size.  
—According to a Treasury Department spokesman, the government will be "mopping public attitudes" during 1978 about the fate of the penny, as well as the half dollar and dollar.  
—Currently, there are some 30 million pennies in circulation.  
—That they are still trying to



**C & G**  
We will be closed Dec. 26.

Bakers Angel Flake  
**Coconut** 14 oz. \$1.19  
48 oz. btl.

Wesson Oil \$1.89  
Ocean Spray Cranberry Jelly, Whole Berry  
**Sauce** 300 size 39¢  
Kraft Miniature 1 lb. pkg.  
**Marshmallows** 3/\$1

**Dole** Canned Pineapple  
When you use a decongestant nasal spray or drops, never use them more often than prescribed. If you do, you get the opposite effect and you end up with even more congestion than you started with.

Dole Heavy Syrup Cks., Crush., Slic.  
**Pineapple** 20 oz. can 49¢  
Liquid Family Size  
**Palmolive** \$1.59  
Foodtown 1/2 gal.  
**Ice Cream** 89¢  
Topping 10 oz.  
**Pet Whip** 49¢

**Potatoes** U.S. No. 1 White 20 lb. bag \$1.49  
U.S. No. 1 White 20 lb. bag \$1.49

**Chiquita Bananas** \$1.19  
U.S. No. 1 White 20 lb. bag \$1.49

**Yellow Onions** 3 lbs. 49¢  
**Tangerines** Florida 210 size 39¢  
**Oranges** Florida 5 lbs. 99¢  
**Celery** Crisp Stalk 35¢  
**Kline Dried Yams** 2 lbs./49¢

# CHRISTMAS Food Guide

Winners in Dec. 17 Turkey Drawing:  
Jimmie Hall, Linda Smith, Roy B. Livingood, Boone Mitchell, Thelma Bruce, L. W. Tolson, Ruby Hunt, June Tinch.



**Turkeys** Swift Gold Crest 10-22 lb. avg. lb. 69¢  
**Turkeys** Fresh Grade A 10-14 lb. & 18-22 lb. avg. lb. 89¢  
**Ground Chuck** Fresh (3 lb. pkg. or larger) lb. 99¢  
**Hams** Dubuque Royal Buffet Boneless (Whole or Half) lb. \$1.79  
**Quik-Cut Hams** Fischer's Whole 10-14 lb. avg. lb. \$1.79  
**Bacon** Fischer's Special Sliced Vac-pac lb. 99¢  
**Sausage** Webber's Whole Hog (2 lbs. 12.57) lb. \$1.29  
**Wieners** Fischer's Reg. 12 oz. pkg. 69¢

**Swift Turkeys**  
10-14 lb. & 18-24 lb. avg. (Limited Supply on Some Sizes)  
lb. 79¢  
Frozen Turkey Breast (4-10 lb. avg.) lb. \$1.19  
U.S. Choice Sirloin Strips (Whole 10-14 lb. avg.) lb. \$2.29 (Individual Steaks)  
U.S. Choice Whole Sirloin Tri Tip Roast lb. \$1.39 (Half lb. \$1.59)  
Fischer's Sliced Bologna (Reg. Thick, Beef, Garlic) lb. \$1.09  
Complete Selection: Oysters, Capons, Cornish Hens, Country Hams, Geese, Ducks.  
★ Fruit Baskets Made To Your Specifications. \$3.50 & up

"Turkey Giveaway" Ten Turkeys will be given away on Dec. 24. "Bonus Giveaway" An Amana Microwave Oven will be given away Sat., Dec. 24 Register at the Store.

Jeno's Pizza Snack Tray 7 1/2 oz. 99¢  
Jeno's Pizza Roll Snack Tray 9 oz. 99¢  
Purina Dog Chow 25 lb. bag \$4.99  
Paramount Candid Dill Sticks 16 oz. 99¢  
Paramount Sweet Midget Gherkins 20 oz. 99¢  
Blackberry, Peach, Apple, Cherry, Strawberry, Apricot  
Stillwell Cobbles 2 lbs. \$1.29  
Frito Brand Corn Chips 12 oz. 69¢  
Cho. Chip, Cho. Cho. Chip, Oatmeal Raisin, Sugar  
Mrs. Goodcookie 16 oz. 89¢

## Green Giant Sale

Kitchen Sliced & French Style Beans 16 oz. 3 cans for 89¢  
Niblets Corn 12 oz. 3 cans for 89¢  
Cream Style & Whole Kernel Corn 17 oz. 4 cans for \$1.00  
Canned Peas 17 oz. 3 cans for \$1.00  
Whole & Sliced Mushrooms No. 2 2 1/2 cans for 89¢  
Whole Asparagus Spears 15 oz. 99¢  
White Corn, Broccoli Spears W/ Butter Sauce  
Broccoli W/ Cheese Sauce, Cauliflower W/ Cheese Sauce  
Frozen Vegetables 10 oz. 49¢  
Nibblers Corn on The Cob 6 Ears for 69¢

Borden 8 oz. **Sour Cream** 35¢  
Lipton 100 Ct. **Tea Bags** \$1.89  
Borden Fresh Whipping Cream 1/2 Pint 3/\$1  
Detergent Family size box **Cheer** \$3.99

Martha White Macaroni & Cheese Dinner 7 1/2 oz. 4/\$1  
Stokely 303 can **Fruit Cocktail** 39¢  
**Coke, Tab, Sprite** 8 pk. 16 oz. 99¢  
W/Bits

Broccoli Bunch 49¢  
Extra Fancy Washington Red & Golden Delicious Apples 6/69¢  
★ We Welcome Federal Food Stamps