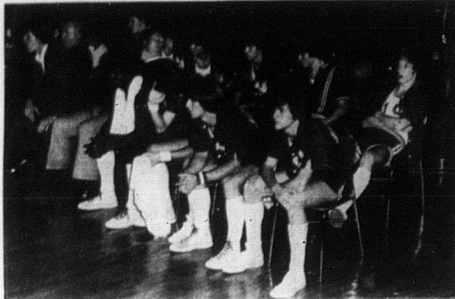


## Bluejackets win opener against Augusta 77-64



Head coach Bobby Jenkins comments to players on the bench during the Augusta season opener Saturday night.

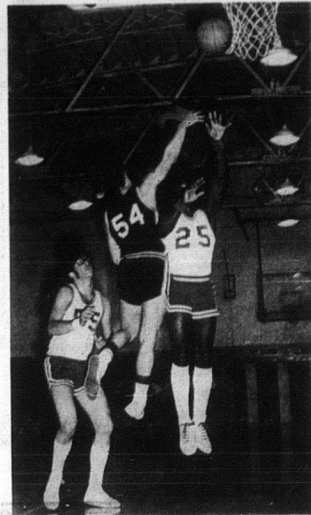
by Wendell McKee  
Nicholas Co. showed signs of greatness in a 77-64 victory over Augusta in the season opener. The Jackets made an almost unbelievable 81 percent of their shots in the first quarter as they trailed on top 25-23. They cooled off to a 31 per cent (4-13) shooting average in the second quarter as Augusta closed the margin to 39-29 at the half.

The Jackets missed the rebounding of junior center James Anderson and senior forward Devine Williams in the second quarter. The Jackets outscored the Panthers by three in the second half as they executed the fast break quite frequently.

Augusta made several rallies in the second half but key plays by many of the Jackets quickly snuffed out the

rallies. This was especially apparent in the third quarter. The Jackets saw an 18 point lead cut to 12 as they were outscored 12-7 in the final minutes of the quarter. Nevertheless, after the half the Panthers never got closer than 15 points.

The NCHS "B" team also won their opener defeating the Augusta 75-61.



James Anderson and Clifford Thompson successfully block a field goal during the Augusta game. The Jackets won the opener 77-64—Jeff Smith photo.

### Would You Believe...

The Old Faithful Geyser in Yellowstone National Park, Wyo., spews forth more than 23 million gallons of water each day.

### NICHOLAS COUNTY HIGH SCHOOL 1977-78 BASKETBALL ROSTER

No.	Name	Pos.	Ht.	Wt.	Grade
23	Joe Ruddell	G-F	6'-11"	155	12
25	Clifford Thompson	G	5'-11"	175	12
29	Mike Hatton	F	6'-1"	155	12
51	Bobby Timcher	F	5'-11"	180	12
45	Devine Williams	F-C	6'-11"	190	12
55	James Anderson	C	6'-3"	190	11
43	Tim Dudley	F-C	5'-11"	160	11
21	Mark Ruddell	G	5'-9"	135	11
35	Mike Wells	F	6'-1"	150	11
15	Greg Mills	G	5'-8"	140	11
11	Mike Hatton	G-F	5'-11"	150	10
11	Mark Vise	G	5'-7"	130	10
41	Jackie Wells	F	5'-7"	150	10
	Mitch Sargent	F	5'-10"	165	11
	Tim Ockerman	F	6'-1"	170	11
	Steve Hamilton	C-F	6'-4"	150	10
	Pat Letcher	C	5'-3"	115	10
	Phillip Rose	C	6'-1"	180	10
	Todd Allison	G-F	5'-8"	165	9
	Barry Bretz	F	6'-1"	155	9
	Terri Edwards	C-F	6'-1"	155	9
	Mike Bowell	F	5'-6"	120	9
	Donald Markland	G	5'-8"	115	9
	Mike Boykin	F-G	5'-8"	135	8
FRESHMEN					
	Jimmy Dale	C	6'-1"	170	9
	Jeff Sorrell	C	5'-11"	175	9
	Tony Howard	F	5'-7"	147	9
	Greg Henry	F	5'-8"	135	9
	Tommy Biddle	G	5'-6"	150	9

### Little Miss FHA elected

by Kay Conley  
Miss Janelia Sibert was selected as Little Miss FHA for 1977. It was announced at the regular meeting of the Nicholas County Chapter of the Future Homemakers of America on Nov. 28. Household items sold by the group

totalled \$1444.00, netting \$360 for FHA. Committees were formed for the upcoming Christmas dance, sponsored by the club. A December roster around each member is asked to add to the activities planned so that they will be successful.

What say?

# 10% Off all items

## Friday, Dec. 9

4 p.m. until closing

Smith's Dollar & Discount  
118 Main Street  
Carlisle

Jolly Good

## Lerman's FRIENDSHIP NIGHT

# 10% OFF All Purchases

## Friday, Dec. 9 5:30 to 9 p.m.

Do your Christmas Shopping Friday Evening, during these Special Friendship Night hours, and SAVE 10% ON EVERY PURCHASE. Bring your shopping list, shop every department... Save 10% EXTRA with LERMAN'S usual low money saving prices.

### LERMAN'S

In Carlisle

Here's something you can hang your hat on for Christmas.

# 10% off

On All Merchandise

Friday, Dec. 9 from 5:30 to 9 p.m.

No Gift Wrapping!

Open Saturday until 8 p.m.

## Baker's Department Store

## GREAT GIFTS

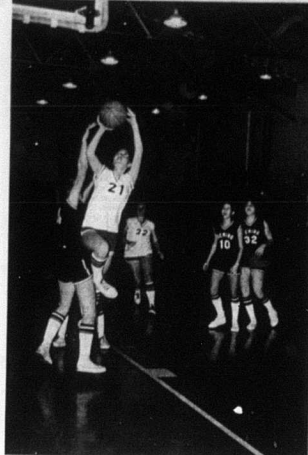
- McCulloch Chain Saws
- Floor Mats
- Battery Chargers
- CB Radio, CB Antennas
- Tape Players, Speakers & Tapes
- Channell Master & RCA Indash AM FM Radio
- TOOLS
- Welders Electric & Acetylene
- Storall Tool Box for Pickup Trucks
- Black & Decker Tools
- S-K Tool Sets
- Small Tool Boxes
- True Craft Wrench Sets

And, many other items to choose from for the men in your house for Christmas

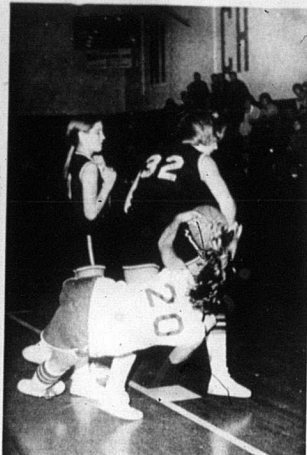
### Dee Jay Auto Parts, Inc.

The Parts Place, Your Autowize Dealer.  
Open every day 7 a.m. - 5:30 p.m.

## Lady Jackets drop opener to Deming 57-45



High scorer Demina Drurrell goes up for two of the 17 points she scored during the Deming game last Thursday. She was high scorer for the Lady Jackets.



Action Thursday A Lady Jacket fights for possession of the ball during the season opener. Deming won the game 57-45—Kay Conley photo.

by Kay Conley  
The Nicholas County "Lady" Jackets, lost their season opener against the Deming Devils 57-45, last Thursday night here.

Nicholas County center Kathy Wade got control of the ball in the tipoff. The Devils just didn't seem to have much of a defense, as the Devils slipped by avoiding the first two points. "Time slowly ran out as the first quarter ended with Deming on top 15-4.

The second quarter brought along a few changes for the Jackets. With the Devils leading almost the whole quarter, the chance of a half time lead looked grim. With eight seconds left, Wade shot for a two-pointer and gave Nicholas a 27-38 lead at half time. Both teams came back ready to start the third quarter. With one of the Jacket's first string players fouling out, the County was at a disadvantage. No matter how hard the Jackets pushed, the Devils just seemed more powerful, excluding Nicholas from ever regaining the lead. The quarter came to a close, the score 45-18 in favor of Deming.

The fourth quarter was a long hard fight for Deming, with two of their players also fouling out. The Jackets tried to catch up, but the battle ended with the Devils winning 57-45.

The Lady Jackets attempted 28 free-throw shots and made seven. Demina Drurrell was leading scorer, with 17 points. Pam Hopkins was next with 14. Tammy Bauer and Kathy Wade had four each. Joan Massey had three, and Kathy Lyons had one.

CONVENIENT CREDIT TERMS

Main St. Carlisle, Ky.

# 10% Discount

on all regularly priced items

## Friday, Dec. 9

from 4p.m. until closing

For your convenience our store will be open each Friday and Saturday nights now until Christmas

# Christmas GE TV SALE

- 17" Diagonal Color TV • 100% Solid State Chassis • "Push-Set" VHF Fine Tuning • Set-And-Forget Volume
- 19" Diagonal Color TV • The Portia Color® Chassis • "Push-Set" VHF Fine Tuning • 78 Position "Click-In" UHF Tuning • Handle
- 21" Diagonal Color TV • 100% Solid State Chassis • Modular Chassis Design • Black Matrix In-Line Picture Tube System
- 23" Diagonal Color TV • 100% Solid State Chassis • Modular Chassis Design • Line Voltage Regulator • Black Matrix In-Line Picture Tube System
- 25" Diagonal Color Console TV • 100% Solid State Chassis • Modular Chassis Design • Line Voltage Regulator • Black Matrix In-Line Picture Tube System
- 27" Diagonal Color Console TV • 100% Solid State Chassis • Modular Chassis Design • Line Voltage Regulator • Black Matrix In-Line Picture Tube System
- 29" Diagonal Color Console TV • 100% Solid State Chassis • Modular Chassis Design • Line Voltage Regulator • Black Matrix In-Line Picture Tube System
- 31" Diagonal Color Console TV • 100% Solid State Chassis • Modular Chassis Design • Line Voltage Regulator • Black Matrix In-Line Picture Tube System

STARTING PRICES: 12" B&W \$89<sup>00</sup>, 10" Color \$289<sup>00</sup>, 17" Color \$349<sup>00</sup>, 19" Color \$389<sup>00</sup> w.t.; 25" Color \$595<sup>00</sup> w.t.

## Win Furniture & GE Major Appliances up to \$1000<sup>00</sup> Retail Value!

Register Now! No Purchase Necessary.

See Us for Details.

## Garrett's Furniture Co.

Open Evenings Until Christmas Starting Friday, Dec. 9th. Carlisle, Ky.

Phone 289-2308 (We Service What We Sell FIRST)