

Buejackets 'really move the ball' against Fairview

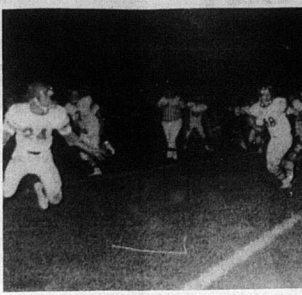
"I thought we played a really great game," said Coach Ben Pumphrey after Friday's game against Fairview at Fairview. "It's the first time we really moved the ball."

Although Nicholas County lost to Fairview 13-0, the Buejackets outscored the Eagles in first downs 13-4 and outgained them 317 yards to 197 yards rushing.

Nicholas County's Tim Moreland kicked off to Fairview to start the game. Jeff Elder recovered a Fairview fumble to give Nicholas County possession early in the first quarter. The Buejackets moved the ball to the Eagle 13 yard line before giving it up on downs. Fairview's Russ Hardin broke loose on a 50 yard run, but Jeff Elder recovered another fumble to give the Buejackets the ball on their own 26 yard line.

But Nicholas County fumbled the ball away on their own 13 yard line. Fairview was penalized five yards for illegal procedure but Nicholas County received a 15 yard penalty for clipping then a five yard penalty for illegal procedure. The Eagles scored from the one yard line. The extra point was good, making the score 7-0 at the end of the first quarter.

In the second quarter Nicholas County moved the ball to the Eagle 20 yard line, giving it up on downs. Fairview's fullback Terry Thompson's 64 yard run was called back for illegal procedure. Randy Hunter tackled the Fairview punter in his own endzone for a Nicholas County safety. Anthony Williams' 45 yard touchdown run late in the second quarter, was nullified by a holding penalty against Nicholas County, making the score 7-2 at halftime.



Williams' touchdown nullified

Coming
for Nicholas Counties
October 3 - 10

Nicholas County speedster, Anthony Williams, sprang a late end zone touchdown in Fairview, 13-0—Kay Conley

Fall Apples
Mitchell's Market
307 Foxspring Ave.
Flemingsburg, Ky. 845-2971

NOTICE TO THE PUBLIC
Notice is hereby given by Columbia Gas of Kentucky, Inc., a corporation with its principal offices at Columbus, Ohio, to its customers and to the public, that said corporation, on the 16th day of August, 1976, filed with the Public Service Commission of Kentucky at Frankfort, Kentucky, the following revised sheets to its Tariff, P.S.C. Ky. No. 4:

Revised Sheet Nos. 3, 4, 5, 6, 7 and 83;
Superseding Revised Sheet Nos. 3, 4, 5, 6, 7 and 83;

containing increased rates and charges proposed to become effective on and after September 6, 1976. By order issued August 18, 1976, in Case No. 6612 the Public Service Commission of Kentucky ordered that the proposed rates and charges be and they hereby are suspended and the application of the rates is deferred for a period of five (5) months on and after the 6th day of September, 1976. The Commission further ordered that a hearing be held thereon on the 20th day of September, 1976, at 9:30 a.m., Eastern Daylight Time, at the Commission's office in Frankfort, Kentucky. The proposed rates and charges are as follows:

General Gas Service Rate Schedule G-1
RATE
First 1 Mcf, or the right thereto, used through each meter each month 53.525
Next 49 Mcf used through each meter each month - per Mcf 1.935
50 Mcf used through each meter each month - per Mcf 1.895
Next 100 Mcf used through each meter each month - per Mcf 1.865
Next 800 Mcf used through each meter each month - per Mcf 1.845
All over 1,000 Mcf used through each meter each month - per Mcf 1.825
The minimum charge per month shall be \$3.50.
Applicable in Ashland, Callerttsburg, Synthiana, Foster, Frankfort, Fulton, Georgetown, Greensburg, Hindman, Inez, Irvine, Lexington, Louisville, Maysville, Midway, Mt. Sterling, Paris, Raceland, Ravenna, Russell, South Williamson, Versailles, Winchester, Worthington and rural communities and areas served by the Company in Bath, Bourbon, Boyd, Bracken, Carter, Clark, Clay, Estill, Fayette, Floyd, Franklin, Greenup, Harrison, Johnson, Knott, Lawrence, Lee, Lewis, Madison, Magoffin, Martin, Mason, Menifee, Montgomery, Morgan, Nicholas, Owsley, Pendleton, Pike, Powell, Robertson, Scott, and Woodford Counties, Kentucky.

Summer Air-Conditioning Service Rate Schedule AC-1
RATE
\$1.695 per Mcf of gas delivered hereunder each billing month, as mentioned above, under Rate Schedule G-1.

Firm and Curtailable Gas Service - Optional Rate Schedule FC-1
RATE
First Volume (Daily Firm Volume Times Number of Days in Month).
Firm 1,000 Mcf per month @ \$1.725 per Mcf
Over 1,000 Mcf per month @ \$1.675 per Mcf
Curtailable Volume
\$1.585 per Mcf of Curtailable Volume of gas delivered hereunder each billing month.
The minimum monthly charge each billing month for gas delivered or the right of the Buyer to receive same shall be:

(a) The amount determined by applying the rates for the Firm Volume to a minimum monthly volume which shall be the product of fifty percent of the specified Daily Firm Volume times thirty; except that when the volume made available is less than 110% of the Firm Volume of (a) above, except that in no event will the Minimum Monthly Charge be less than one hundred fifty dollars (\$150).

(b) In the event of monthly, seasonal or annual curtailment due to gas supply shortage, the Minimum Monthly Charge shall be waived when the volume made available is less than 110% of the Firm Volume of (a) above, except that in no event will the Minimum Monthly Charge be less than one hundred fifty dollars (\$150).

Applicable throughout the entire territory served by Columbia Gas of Kentucky, Inc., as mentioned above under Rate Schedule G-1.

Firm and Interruptible Gas Service - Optional Rate Schedule FI-1
RATE
Daily Firm Volume
First 5,000 Mcf per month @ \$1.675 per Mcf.
Over 5,000 Mcf per month @ \$1.645 per Mcf.
Daily Interruptible Volume
\$1.525 per Mcf of Daily Interruptible Volume of gas delivered hereunder each billing month.
The minimum monthly charge each billing month for gas delivered or the right of the Buyer to receive same shall be:

(a) The amount determined by applying the rates for the Firm Volume to a minimum monthly volume which shall be the product of fifty percent of the specified Daily Firm Volume times thirty; except that

(b) In the event of monthly, seasonal or annual curtailment due to gas supply shortage, the Minimum Monthly Charge shall be waived when the volume made available is less than 110% of the Firm Volume of (a) above, except that in no event will the Minimum Monthly Charge be less than three hundred dollars (\$300).

Applicable throughout the entire territory served by Columbia Gas of Kentucky, Inc., as mentioned above under Rate Schedule G-1.

Firm and Interruptible Gas Service - Optional Rate Schedule FI-2
RATE
Daily Firm Volume
First 50,000 Mcf per month @ \$1.575 per Mcf.
Over 50,000 Mcf per month @ \$1.505 per Mcf.
Daily Interruptible Volume
\$1.425 per Mcf of Daily Interruptible Volume of gas delivered hereunder each billing month.
The minimum monthly charge each billing month for gas delivered or the right of the Buyer to receive same shall be:

(a) The amount determined by applying the rates for the Firm Volume to a minimum monthly volume which shall be the product of fifty percent of the specified Daily Firm Volume times thirty; except that when the volume made available is less than 110% of the Firm Volume of (a) above, except that in no event will the Minimum Monthly Charge be less than five hundred dollars (\$500).

(b) In the event of monthly, seasonal, or annual curtailment due to gas supply shortage, the Minimum Monthly Charge shall be waived when the volume made available is less than 110% of the Firm Volume of (a) above, except that in no event will the Minimum Monthly Charge be less than five hundred dollars (\$500).

Applicable throughout the entire territory served by Columbia Gas of Kentucky, Inc., as mentioned above under Rate Schedule G-1.

Interruptible Gas Service - Optional Rate Schedule IS-1
RATE
Billing Months April Through November
\$1.875 per Mcf for all volumes delivered each month up to and including the Average Monthly Winter Volume. The Average Monthly Winter Volume shall be one-fourth of the total delivery during the preceding billing months of December through March.
\$1.475 per Mcf for all volume delivered each month in excess of the Average Monthly Winter Volume.
Billing Months December Through March
\$1.875 per Mcf delivered.
The minimum monthly charge for gas delivered or tendered for delivery shall be six hundred dollars (\$600) per billing month for each of the billing months April through November that the Buyer contracts to take interruptible gas tendered, as available, by Seller; provided, however, if during any of such months the above rate applied to volumes tendered for delivery amounts to less than six hundred dollars (\$600), then the minimum monthly charge shall be waived.

Applicable throughout the entire territory served by Columbia Gas of Kentucky, Inc., as mentioned above under Rate Schedule G-1.

Intrastate Utility Service Rate Schedule IU-1
RATE
For all gas delivered each month - \$1.565 per Mcf.
Minimum Monthly Charge: The maximum daily dollar specified in the Sales Agreement multiplied by \$1.565 per Mcf.
Applicable throughout the entire territory served by Columbia Gas of Kentucky, Inc., as mentioned above under Rate Schedule G-1.

It is estimated that Columbia Gas of Kentucky, Inc.'s revisions to its Tariff, P.S.C. Ky., No. 4, which contains aforementioned rate schedules, will result in an increase in revenue to Columbia Gas of \$1,009,594 annually.

Copies of Columbia Gas of Kentucky, Inc.'s Tariff, P.S.C. Ky. No. 4, including the aforementioned rate schedules, are available for inspection by the public during regular office hours at the offices and places of business of Columbia Gas in the territory affected thereby in Kentucky at the following places: Ashland, Cynthiaiana, Frankfort, Georgetown, Irvine, Lexington, Maysville, Mt. Sterling, Paris, Prestonsburg, Versailles, and Winchester.

Columbia Gas of Kentucky, Inc.
By: /s/ C. E. Mentch
Vice President
9-2-31ch

Bluejacket B team clips Fleming 13-0 in Monday's opener

The Nicholas County Bluejacket B-Team won its season opener at its home in the "Friday Night Football" game against the Fleming Panthers Monday night. The Bluejackets scored in the second and fourth quarters and played faultless defense to beat the Panthers 13-0. Fleming County crossed into Bluejacket territory only once during the game, and that was in the third quarter.

Fleming County returned the opening kickoff to their own 45 yard line, and the Nicholas County defense went right to work. Randy Hunter socked the Fleming County quarterback for a size yard loss. On second down Fleming County recovered its own fumble for a 19 yard loss. Fleming County carrier ran no gain and then punted to Nicholas County, which returned the ball to Fleming County's 42 yard line. Greg Wills 13 yard run was followed by carrier's three yard gain, but the Bluejacket offense bogged down and was forced to punt. Neither team was able to move the ball during the remainder of the first quarter, which ended with no score.

Fleming County opened the second quarter with the ball, but was unable to move it and punted to Nicholas County, which returned the ball to mid-field. Wills gained 20 yards and Hunter two yards. Mike Berry then burst 28 yards up the middle to score. Tim Moreland's kick was good and with just under five minutes left in the second quarter Nicholas County led 7-0.

Fleming County returned the kickoff to their own 30 yard line, and after a two yard gain the Panther quarterback was tackled by Jeff Randolph for an eight yard loss. Fleming County ran again for no gain, and their punt was blocked and recovered by Ricky Fryman on the Fleming County 14 yard line. Three plays later, Mark Ruddell connected with Gary Williams on an 11 yard touchdown pass, but the score was nullified by an offside penalty against Nicholas County. Unable to move the ball, Nicholas County (led goal attempt) was fumbled by the holder. Fleming County's punt attempt was incomplete as the half ended with Nicholas leading 7-0.

Nicholas County received the second half kickoff, but was unable to move the ball and Moreland's punt was returned by Fleming County to its own 45 yard line. A Fleming County pass attempt was incomplete, but then the Panthers coupled a completed pass with a roughing the passer penalty against Nicholas County to move the ball to the Nicholas County 41 yard line, the only time during the game Fleming crossed mid-field. The Panthers were unable to move the ball and were forced to punt. Berry took the punt and was tackled on the Nicholas County eight yard line. Wills swept left end for 54 yards to the

end, but Ruddell was there for a seven yard loss. After Berry's three yard gain, Nicholas County's punt was fumbled by the Panthers and recovered by Jimmy Price on Fleming County's 17 yard line. Nicholas County gained three yards, then Wills ran left end 14 yards for the touchdown. Moreland's kick attempt for the extra point was no good, and with just over three minutes left in the game, Nicholas County led 13-0.

Fleming County returned the ball to their own 30 yard line. Berry intercepted a Panther pass on the Nicholas County 46 yard line. Nicholas County couldn't move the ball, and punted. Fleming County downed the punt on its own 33 yard line. Fleming County threw two incomplete passes, then Nicholas County was penalized five yards for offside. Fleming County passed again, incomplete, and called time out with seven seconds left in the game. When play resumed, Fleming County once again attempted a pass, but the Panther quarterback, under a heavy rush from defensive end Mike Conley, threw an interception to Gary Williams who returned the ball to the Fleming County 20 yard line as the game ended. Final score—13-0 in favor of the Bluejackets.

Nicholas County's offensive leader was Greg Wills with 101 yards in 13 carries, followed by Mike Berry, 41

yards in 8 carries, and Randy Hunter, seven yards in five carries. The Bluejackets had a total of 149 yards. Nicholas County also outscored Fleming County in first downs 4-1. Tim Moreland punted three times for a total of 109 yards. Gary Williams, Mike Berry, Randy Hunter, Jeff Randolph, Mark Mattix, Tim Moreland and Jimmy Price each had four tackles to lead the Bluejacket defense.

...Where Shopping Pays!

IGA

Table/Re Grade A Whole Fryers
lb. **39¢**

IGA Sugar
5 lb. bag **79¢**

Fischers Bologna
lb. **99¢**

Fischer Mellowood Bacon
1-lb. pkg. **1.49**

White Cloud Bath Tissue
4-roll **59¢**

Kraft Mayonnaise
16-oz. jar **49¢**

Old Virginia Strawberry Preserves
16-oz. jar **59¢**

Table/Fresh Cabbage
lb. **9¢**

U.S. No. 1 White Potatoes
20 lb. bag **1.49**

Table/Fresh Red Grapes
lb. **39¢**

New Crop Jonathan Apples
3-lb. bag **69¢**

Table/Fresh Yams
lb. **19¢**

Table/Treat Sandwich Bread
20-oz. loaf **39¢**

Table/Fresh Golden Corn
12-oz. can **3.99**

Table/Fresh Green Beans
12-oz. can **3.89**

Table/Fresh Light Tuna
6.5-oz. can **49¢**

Table/Fresh Old Style, Buttermilk IGA Biscuits
10-ct. cans **69¢**

Table/Fresh Fruit Pies
8-oz. box **3 for 89¢**

Table/Fresh Peanut Butter
32-oz. jar **1.09**

Table/Fresh Ice Cream
half gallon **89¢**

Table/Fresh Margarine
2-lb. box **99¢**

Table/Fresh Bath Tissue
4-roll **59¢**

Table/Fresh Chunk Light Tuna
6.5-oz. can **49¢**

Table/Fresh Mayonnaise
16-oz. jar **49¢**

Table/Fresh Strawberry Preserves
16-oz. jar **59¢**

Table/Fresh Hi-C Drinks
6-pack **2.89**

Table/Fresh Baby Cereals
6-oz. box **21¢**

Table/Fresh Orange Juice
6-oz. can **1.29**

Table/Fresh IGA Sugar
5 lb. bag **79¢**

JERRY'S
306 EAST MAIN ST.

IGA

FOODLINER
CARLSLE

When you think of pests,

think of me.

I can get the termites out of your house. And the ants, cockroaches, spiders or mice. And keep them out! I can get any pest out of your house (except for your in-laws). I'm Bob Davis, the Carlsle Terminix man. Call me collect at 845-2844. LEXINGTON 252-8484.

TERMINIX
Termites of Lexington