

### Farm survey results help producers with plans

The latest estimates of cattle, hogs, and chickens on farms, the expected production in 1976 will hinge on a major survey set for late November and early December by the pig and calf crops, and winter wheat (USDA).  
Jim Koopper, statistician in charge of

**Western Auto**  
THE FAMILY STORE

**CONVENIENT CREDIT TERMS**  
Main St. Carlisle, Ky.

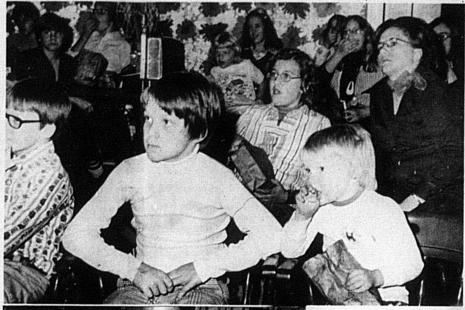
**Sale Now In Progress**

Shop Locally and Save

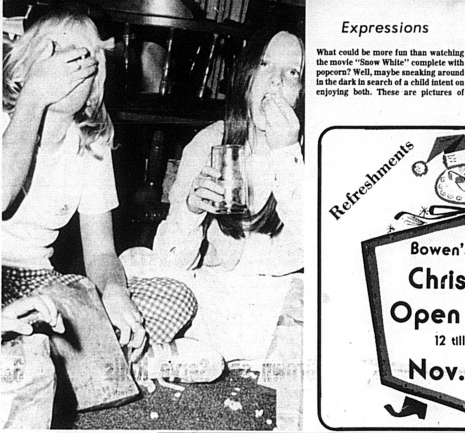
Gifts For The Entire Family

For The Convenience Beginning Friday, November 21, we will be open until 1:00 p.m. and every Friday until Christmas.

See our Lay-A-Way Register for free gift to be given away each Friday night.



children and mothers watching the family night movie at Carle Country Club on Wednesday, Nov. 11, while others were attending the presentation of gold trophies in another room. Can you pick out which picture was taken before they realized the photographer was there?—Linda Ouley photo



### SHORT OF IDEAS FOR CHRISTMAS?

How about a One Year's New Gift Subscription to the Carlisle Mercury? \$6.00 in Ky.; elsewhere \$7.00. 14-00

**Studio**  
CINEMA

STARTS FRIDAY NOVEMBER 21 for 2 WEEKS

Nightly at 7:30 only Sat.—Sun. 1:30 & 7:30

An Event...

PG-13  
A VISUAL PICTURE  
(YOUR OWN IMAGINATION)

**Expressions**  
What could be more fun than watching the movie "Snow White" complete with popcorn? Well, maybe searching around in the dark in search of a child interest on enjoying both. These are pictures of

**Hop Aboard!**

Get your baby needs here

- \* Pacifier
- \* Mirror Rattles
- \* Bibs, Trays
- \* Shower Gifts
- \* Receiving & Walking Blankets
- \* Soothers & Teethers
- \* Feeding Sets
- \* Spoon & Fork Sets
- \* Baby Brushes
- \* Carriages
- \* Baby Toys
- \* Patches Dolls
- \* Baby Joy Originals

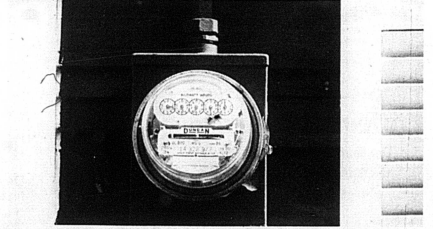
**Hopkins Drug**  
"Your Prescription Our Speciality"

The Kentucky Crop and Livestock Reporting Service, explained that estimates developed from this annual survey are always useful to those making decisions in agriculture. The information aids producers, processors, planners, and others in managing output and marketing operations and helps maintain an orderly situation for agriculture. Of particular interest in the coming estimates, will be how another year without government acreage restrictions following a record crop in 1973 and increased foreign demand affected wheat farmers' fall plantings.

The estimates will be available through the Kentucky Crop and Livestock Reporting Service office in Louisville in December for wheat, hogs, and poultry, and early February for cattle.

The survey results rely on cooperation from thousands of producers.

## ONCE A MONTH ALL WINTER, YOU GET TO SEE A HEAT PUMP'S BIGGEST ADVANTAGE.



A lower electric bill. Much like other heating and air conditioning units, a heat pump will keep your home at a year 'round comfort level. However, a heat pump goes one step further. It adds efficiency. In fact, it can heat your home up to 100% more efficiently. That's like getting two dollars' worth of comfort for every dollar's worth of electricity.

A heat pump works quite simply. During the winter, it takes heat from the air outside (there is always some heat in the air no matter how cold it is) and pumps it into your home. In the summer, it cools your home by taking heat from the air inside your home and pumping it outside. Hence, the full name, the reverse cycle heat pump.

If you're thinking of a new heating system, contact our local office for more information. With a heat pump, you can enjoy year 'round comfort and get a monthly reminder of what an economical choice you made.

**KENTUCKY UTILITIES**  
ELECTRICITY... USE IT, BUT USE IT WISELY.

**Register for FREE color console TV to be given away Dec. 31st**

100% Solid State "Energy Saver" Chassis  
Modular Chassis Design  
Black Matrix Spectra-Brite TV Picture Tube  
One Touch Color System  
Custom Picture Control  
Illuminated Channel Windows  
DC Restoration  
Cable-Ready Antenna Connector

25" DIAGONAL

Model WMB925WD

**fine furniture design**  
high styling and energy-saving too

**Garrett's Furniture Co.**  
CARLISLE PHONE 289-2308

# GRAND OPENING

PRICES GOOD THRU NOVEMBER 26 AT JERRY'S IGA FOODLINER

Stokely or IGA

**Pumpkin**

16-oz. can **4 for \$1**

Ocean Spray

**Cranberry Sauce**

16-oz. can **29¢** whole or jellied

IGA Saltines

1-lb. box **39¢**

Grade A **Land O'Lakes Turkey**

over 16 lb. **53¢** Limit one with \$7.00 or more order

Armour Star

**Semi-Boneless Hams**

whole lb. **1.29** half lb. 1.39

IGA

**Fruit Cocktail**

16-oz. can **39¢**

INSTANT

**Nescafe Coffee**

10-oz. jar **1.69**

IGA

**2% Lowfat Milk**

2 for **1.19** 1/2 gallons

Table Treat

**Brown and Serve Rolls** . . . 12 pak **3 for \$1**

Fresh Standard Oysters 12 oz. can **\$1.69**

Table Fresh Beef 3 lbs. bowl **79¢**

Center Ham Slices 1 lb. **1.59**

Table Fresh Rib Roast 1 lb. **1.69**

5 Flavours TableRite Ice Cream 1/2 gallon **89¢**

IGA Frozen Whipped Topping 8-oz. bowl **49¢**

Minute Maid Frozen Orange Juice 16-oz. can **79¢**

Large Eggs 1 dozen **75¢**

Blue Bonnet Whipped Stick 8-oz. bowl **49¢**

Kraft Whip Topping 8-oz. bowl **59¢**

Tropicana Orange Juice 64-oz. can **79¢**

Heavy Duty Reynolds Wrap 25 foot roll **65¢**

20-oz. can **49¢**

Sliced Pineapple 1 can

Table Fresh

**Bake-Rite Shortening**

3-lb. can **89¢**

Plain or Self-Rising **Gold Medal Flour**

5-lb. bag **69¢**

Banquet Frozen

**Pumpkin or Mince Pies**

20 oz. Each **39¢**

Sweet Peas, Niblets Corn

12 oz. **Green Giant & 17 oz. Vegetables**

cans **3 for 89¢**

Table Fresh

**Celery**

**3 for \$1.00**

Good only at IGA thru Nov. 26

**Bisquick**

40 oz. box **89¢** 2846 with coupon

THIS IS A VALUABLE COUPON

IGA BARTLETT PEAR HALVES . . . 16 oz. **39¢**

PARAMOUNT SWEET PICKLES . . . 32 oz. **69¢**

ORE-IDA CRINKLE CUT POTATOES 32 oz. **69¢**

IGA FROZEN FISH PORTIONS . . . 32 oz. **99¢**

FRESH WHIPPING CREAM . . . . . 8 oz. **39¢**

Good only at IGA thru Nov. 26

**Ms Bakers**

Angel Flake Coconut

14-oz. bag **99¢** with coupon

THIS IS A VALUABLE COUPON

**JERRY'S**

306 EAST MAIN ST.

**FOODLINER**

CARLISLE