

Opinion

Thanksgiving Day

NEXT THURSDAY IS Thanksgiving Day. It is a time to pause in our hectic and thank God for all the blessings he has given us.

It seems that all of us go to an unbelievably fast pace, and none of us know how to slow down. It may seem that we are possible in these times of fast communications, modern technology, and Christmas approaches, it will probably get a little worse.

But, our God has blessed this great country and He has blessed each great

Never has there been such a time of peace in our history in any other country.

Thanksgiving Day is set aside in our country. Sure we all have our own ideas of how to spend the day, but each of us is lucky in many ways to do. Let's give credit where credit is due. As Christmas approaches, it will show an "And, then thank God properly on this day especially.

Lifesaving maneuver

The Kentucky Division American Red Cross will incorporate in its death and nursing educational programs a new technique to aid choking victims. The organization's goal is to save the lives of persons who might ordinarily die from blocked air passages.

The problems of blocked air passages have received considerable attention as a result of the work of Dr. Henry J. Heimlich, Director of Surgery, the Jewish Hospital of Cincinnati, who has developed a maneuver to respond to problems of the so-called "coke emergency," that is, obstruction of a person's airway, usually by food, clothing, aspirin tablets, or a possible death within minutes. The Heimlich maneuver consists in standing behind the victim, putting both arms around his neck, just above the belt line, allowing the arms and upper legs to hang forward. Then grasping his own neck with his left hand, the rescuer rapidly and strongly presses into the sternum of Dr. Heimlich and, forcing the diaphragm upward, compressing the lung and expelling the obstructing object.

Many individuals have written to verify the Heimlich maneuver through their own personal experience.

A Kansas City police sergeant wrote: "My 18-month-old child was choking to death on a piece of hard candy. I grabbed the child by the legs with my left hand, and he fell forward as if he was falling rapidly forward. I caught him just under the diaphragm with my right hand. This dislodged the piece candy with just a bit of force and my started him breathing again."

At a conference recently in American Red Cross National Headquarters, Washington, D.C., Dr. Heimlich, physicians involved in recent research and those having background and knowledge in this subject area considered such topics as recognition of an airway obstruction technique to relieve an obstruction and sequencing of using procedures. Resuscitation, both first aid and advanced, were distributed among the participants before the conference so that the Heimlich maneuver was repeated from each other's progress.

The Heimlich and others, the Red Cross is seeking to eradicate as the sixth largest cause of death in the United States, the Heimlich and others, the Red Cross is seeking of an engine effort to provide the best emergency first aid instruction to the nation.

Agree or Not

by S.C. Van Curen

It is a fact that the medical profession and the layman are often at odds. The layman often feels that the medical profession is overcharging and that the medical profession is not doing enough for the patient. The medical profession often feels that the layman is not understanding the medical profession and that the layman is not doing enough for the medical profession.

One of the reasons for this is that the medical profession is a complex one. It involves a great deal of knowledge and skill. The layman often does not understand this and therefore often feels that the medical profession is overcharging and that the medical profession is not doing enough for the patient.

Another reason for this is that the medical profession is often slow to change. The layman often wants to see change and the medical profession often does not want to change. This often leads to a feeling of frustration on the part of the layman and a feeling of being misunderstood on the part of the medical profession.

Help when you need it

As an individual who is often in the hospital and returns home. He lives alone with no one to help him while he is away. He has a chronic illness and needs such as food, medication, personal care and companionship were not. Now he is on his own, often frightened and confused. In many instances it is unable to care for himself. With the exception of his physician, where does he turn for the help he needs?

A diabetic returns home with the knowledge that the responsibility of survival is his. Who can he turn to, should he be anxious and depressed? Who will help him accept his dietary restrictions from now on his life will be governed by help and proper diet?

Help is available for these people and for you. Individual help is available through your local County Home Health Services. These services are provided by a variety of skilled, trained personnel. Professionals are available when you need them on a regular basis.

You may ask what exactly is Home Health Care? Home Health is a comprehensive care by which services are provided to individuals and families in their own homes. The home environment plays a significant role in promoting health and the healing process. Home Health provides an effective, low cost health care, promotes shorter stays in the hospital, or hospitalization at all and professional medical and nursing care at home.

Home Health is a team effort involving you, your doctor, your family and the Home Health staff. Following your doctor's orders, the staff provides nursing care and other health services on a part-time basis and helps you and your family take care of you at home.



20 and 40 years ago

Thursday, November 21, 1955
A hungry trio of thieves entered a restaurant operated by Lovell J. (Preston) Allison at the city limits Friday morning and helped himself to a feast and a bowl of fried chicken. Missing were \$70 worth of cigarettes, a toaster, candy and several notions. Several machines were also broken into.

The Busy Bee 44B Club has selected the following officers: Betty Ann Vines, president; Katie Housar, vice president; Wanda Lawrence, secretary-treasurer; Sylvia McCarty and Sylvia Kinnett, song leaders; Lynda Stelling and Cecelia Gilly, reporters; Becky Barlow and Bill Swain, senior recreation; Judy Giffin and Raymond Wesley, junior recreation; Diane Halliford and Linda Clark, cheerleaders; Judy Hopkins, messenger; and Judy Whitley, librarian.

Judge Henry Myers, former city police judge, was named Monday to Johnson Memorial Hospital convalescent home on Elm Street.

MAIRIED—Miss Patay Jane Scott, Orlando, Fla., to A2C James Archer Cox Jr., South Irvin, Nov. 18, in Orlando.

BOB—To Mr. and Mrs. Jack Spahr, Culver City, Calif., a son, Richard Kenneth, Nov. 17, in Santa Monica, Calif.—To Mr. and Mrs. Clay Myrator, a daughter, Sharon Kay, Nov. 18, in Los Angeles.

SHARPBURG—To Mr. and Mrs. John H. Wright, Lexington, a daughter, Pamela Kay, Oct. 28.

DEEDS—Otha Sparks, 85, Friday—Lloyd Hughes, 81, Monday—Mrs. Geraldine Wagon Hall, 68, Thursday at the home of her daughter.

Another bill would increase workmen's compensation payments from the present 50 percent to 60 percent for total disability and 40 percent for partial disability. The fiscal analysis bill could be of immense benefit to business.

Another bill would increase workmen's compensation payments from the present 50 percent to 60 percent for total disability and 40 percent for partial disability. The fiscal analysis bill could be of immense benefit to business.

Another bill would increase workmen's compensation payments from the present 50 percent to 60 percent for total disability and 40 percent for partial disability. The fiscal analysis bill could be of immense benefit to business.

Another bill would increase workmen's compensation payments from the present 50 percent to 60 percent for total disability and 40 percent for partial disability. The fiscal analysis bill could be of immense benefit to business.

Another bill would increase workmen's compensation payments from the present 50 percent to 60 percent for total disability and 40 percent for partial disability. The fiscal analysis bill could be of immense benefit to business.

Another bill would increase workmen's compensation payments from the present 50 percent to 60 percent for total disability and 40 percent for partial disability. The fiscal analysis bill could be of immense benefit to business.

Another bill would increase workmen's compensation payments from the present 50 percent to 60 percent for total disability and 40 percent for partial disability. The fiscal analysis bill could be of immense benefit to business.

Another bill would increase workmen's compensation payments from the present 50 percent to 60 percent for total disability and 40 percent for partial disability. The fiscal analysis bill could be of immense benefit to business.

Another bill would increase workmen's compensation payments from the present 50 percent to 60 percent for total disability and 40 percent for partial disability. The fiscal analysis bill could be of immense benefit to business.

Another bill would increase workmen's compensation payments from the present 50 percent to 60 percent for total disability and 40 percent for partial disability. The fiscal analysis bill could be of immense benefit to business.

Another bill would increase workmen's compensation payments from the present 50 percent to 60 percent for total disability and 40 percent for partial disability. The fiscal analysis bill could be of immense benefit to business.

Another bill would increase workmen's compensation payments from the present 50 percent to 60 percent for total disability and 40 percent for partial disability. The fiscal analysis bill could be of immense benefit to business.

Another bill would increase workmen's compensation payments from the present 50 percent to 60 percent for total disability and 40 percent for partial disability. The fiscal analysis bill could be of immense benefit to business.

Another bill would increase workmen's compensation payments from the present 50 percent to 60 percent for total disability and 40 percent for partial disability. The fiscal analysis bill could be of immense benefit to business.

Another bill would increase workmen's compensation payments from the present 50 percent to 60 percent for total disability and 40 percent for partial disability. The fiscal analysis bill could be of immense benefit to business.

Another bill would increase workmen's compensation payments from the present 50 percent to 60 percent for total disability and 40 percent for partial disability. The fiscal analysis bill could be of immense benefit to business.

Another bill would increase workmen's compensation payments from the present 50 percent to 60 percent for total disability and 40 percent for partial disability. The fiscal analysis bill could be of immense benefit to business.

Another bill would increase workmen's compensation payments from the present 50 percent to 60 percent for total disability and 40 percent for partial disability. The fiscal analysis bill could be of immense benefit to business.

Another bill would increase workmen's compensation payments from the present 50 percent to 60 percent for total disability and 40 percent for partial disability. The fiscal analysis bill could be of immense benefit to business.

Another bill would increase workmen's compensation payments from the present 50 percent to 60 percent for total disability and 40 percent for partial disability. The fiscal analysis bill could be of immense benefit to business.

Another bill would increase workmen's compensation payments from the present 50 percent to 60 percent for total disability and 40 percent for partial disability. The fiscal analysis bill could be of immense benefit to business.

Another bill would increase workmen's compensation payments from the present 50 percent to 60 percent for total disability and 40 percent for partial disability. The fiscal analysis bill could be of immense benefit to business.



Attend training clinic

These 44fers attended an officers training clinic on Nov. 19 at the Nicholas County Extension office, under the leadership of Miss Sharon Alexander. Top left photo, recreation leaders: Dolly Hunt, Kim Snapp.



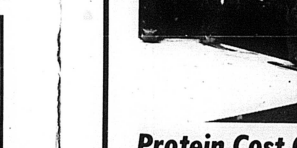
Service by TV or Radio. Contract Wiring—Call for a FREE Estimate.



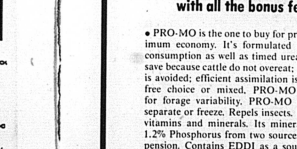
REPLACE BROKEN GLASS IN WINDOW DOORS with SAFETY ACRYLIC PLASTIC with Flexo-Glaze.



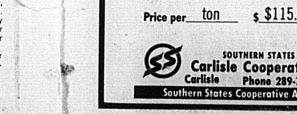
Farm Lawn and Soil Hints. Follow these hints the best times to take action against the broadleaf weeds in your lawn.



Protein Cost Cutter. Get Southern States PRO-MO, the liquid protein supplement with all the bonus features.



The Carlisle Mercury. Published every Thursday at 232 N. Locust St., Carlisle, Nicholas County, Ky. 40311.



Carlisle Cooperative. Southern States Cooperative Appliance Agency. Price per ton \$115.00.



Church group



Church group



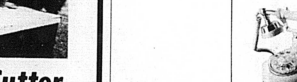
Church group

Par Sparka, Tracy Wootley, Todd Seaton, James Goddell, Bottom Damper; Top right photo, secretary-treasurers: Back row, Teresa Wootley, Cheryl Love and Betty Inhamel, tent leaders: Front row, Mark Johnson, and Brad Curtis.

Hospital notes for two weeks. Nov. 1 to Nov. 8, 1975. Visiting hours: 10 a.m. to 8 p.m. ADMISSION: Bonnie Grimes, Cindy Flora, Elizabeth Barber, Nell Brayfield, Len Willoughby, Stella Ashbury, Orens Ockerman Sr., J.C. Livingston, Kash Stone, Vonda Phyllis Smith, Delphia Ashbury, Tonya Sue Irvy, Bobby Fryman, Wayne Roe Jr., Carlisle, Nettie Baker, Sharpburg, Tommy Miller, Betty Morgan, Frances Miller, Russell Mitchell, M. Olivet; Jane Herridon, Dean Russell, Edwin Anna Frances McCall, Millerburg; Hattie Barnett, Elmville; DISMISSED: Nancy Barbee, Zella South, Carolyn Dennis and baby boy, Clarie Lynn, Ethel Bramblett, Irvy King, Ruby Hunt, Katherine Allison, Carrie Lyons, Ethel Bramblett, Irvy King, Robert Heid, Bonnie Grimes, Tonya Irvy, Carlisle; Estelle Lovell, Betty Barnes, Betty Morgan, M. Olivet; Orens Ockerman Sr., Sharpburg; Chester Vice, Mayslick; Jane Herridon, Edwin Anna Mitchell, Millerburg.

Nov. 8 to Nov. 14, 1975. Visiting hours are 2 to 4 p.m. to 8:30 p.m. ADMISSION: George T. Jolly, Frances Dolson, Betty Holiar, Dale

KISS Unwanted Items Goodbye! Sell them in the Classifieds!



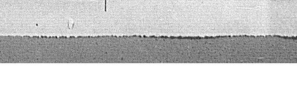
Conditex \$29.95 or 30.99 per month. Ester \$22.95 or 23.25 per month. Chesterton \$33.95 or 34.99 per month.



Casco \$29.95 or 30.99 per month. Mademaster \$41.95 or 34.15 per month. Accent \$49.95 or 51.25 per month.

Design Line' phones from South Central Bell make beautifully different holidays. Weddings. Anniversaries. New homes. Or give yourself a gift.

Design Line' phones housing is owned by the person you buy it for. It comes with a six-month warranty. We own, service and maintain the working parts as always. Tax and installation, if applicable, are not included in the price. Allow up to three weeks for delivery.



UK receives \$240 thousand cancer research grant

The University of Kentucky has received a \$240,000 cancer research grant from the National Cancer Institute (NCI).

The five-year grant will support the work of Dr. David M. Goldenberg, who is concerned with determining why cancer is capable of spreading throughout the body by a process called metastasis.

"This is one of several major grants received by this University in recent months for cancer research, education and patient care," said UK President Ott A. Stogdiler. "We are pleased with the national support our scientists and technicians are receiving to fight this disease.

The grant will allow Goldenberg to expand research that he began in 1967. Goldenberg is studying his own theory that cancer cells fuse or join with normal cells and thus become more malignant and spread in the body.

In previous studies Goldenberg found that normal human cancer cells that interacting human cancer cells production of very malignant tumors, leading him to conclude that some factors controlling cancer in the human cells are in some way transferred and perhaps incorporated into the genetic material of the normal human cells. He has also found evidence that fusion or hybridization of cancer cells with normal body cells in animals may be the mechanism by which tumors can change and become more malignant.



Church group

Prior to the NCI grant, Goldenberg had been conducting his research under grants from the American Cancer Society, the Damon Runyon-Walter Winchell Foundation for Cancer Research, and a previous grant from NCI.

In addition to the grant monies which Goldenberg is using, UK has received funds from the National Cancer Institute for Dr. Yoon Maruyama's radiation therapy of cancer project, and a grant to Dr. William K. Mosker Jr., from the U.S. Department of Health, Education and Welfare for the development, implementation and evaluation of a comprehensive cancer education program for the UK Albert B. Chandler Medical Center.

For A Beautiful Living color Portrait. Fri. & Sat. 5 & 10 Carlisle 5 & 10 Photo Hours Nov. 21 & 22 Carlisle, Ky. Children under 20 photographed free!

ONE PRICE PEOPLE'S PARK.

Design Line' phones from South Central Bell make beautifully different holidays. Weddings. Anniversaries. New homes. Or give yourself a gift.

Design Line' phones housing is owned by the person you buy it for. It comes with a six-month warranty. We own, service and maintain the working parts as always. Tax and installation, if applicable, are not included in the price. Allow up to three weeks for delivery.

Design Line' phones from South Central Bell make beautifully different holidays. Weddings. Anniversaries. New homes. Or give yourself a gift.

Design Line' phones housing is owned by the person you buy it for. It comes with a six-month warranty. We own, service and maintain the working parts as always. Tax and installation, if applicable, are not included in the price. Allow up to three weeks for delivery.

Design Line' phones from South Central Bell make beautifully different holidays. Weddings. Anniversaries. New homes. Or give yourself a gift.

Design Line' phones housing is owned by the person you buy it for. It comes with a six-month warranty. We own, service and maintain the working parts as always. Tax and installation, if applicable, are not included in the price. Allow up to three weeks for delivery.

Design Line' phones from South Central Bell make beautifully different holidays. Weddings. Anniversaries. New homes. Or give yourself a gift.

Design Line' phones housing is owned by the person you buy it for. It comes with a six-month warranty. We own, service and maintain the working parts as always. Tax and installation, if applicable, are not included in the price. Allow up to three weeks for delivery.

Design Line' phones from South Central Bell make beautifully different holidays. Weddings. Anniversaries. New homes. Or give yourself a gift.