

Kroger DISCOUNT FOOD STORES

Jimmy Smith

By Jimmy Smith
Paris girls team was just too much for Nicholas County's girls to handle, and they went from a one-point trailing margin at the end of the second quarter, to a 24-point deficit by the end of the game.

The Nicholas County squad was outscored, 59-7, in the third quarter to go behind the Greyhounds, and never again pose a real threat.

Paris broke out into the lead, 61-60, in the game before Carla Pryor's basket brought the score to 63. Then Deanna Darrell hit a shot, to pull Nicholas County to within three, 65-62. With 1:21 remaining in the first period, Carla Pryor brought the Jackets to within a single point, 64-63.

Shelia McLean hit the opening basket of the second quarter for Nicholas County, to bring the Jackets back to within one point of the Greyhounds, at 13-11. Paris retaliated in the Nicholas County second and went out to a 17-11 lead. Just four straight points by Tara Bowen pulled Nicholas County to within two points of Paris, at 17-15. Then Tara hit her third straight shot and handed the Jackets a tie score, at 17 all.

Paris then hit four straight scores, and Carla Pryor's free throw led the Jackets within a single

pointing venture of turning the tables on the Greyhounds.

Paris came out hot right from the outset of the second half, hitting the first two baskets of that quarter. Then baskets by McLean and Pryor brought Nicholas back to within two, at 28-26. But Paris never looked back from that point on. They banged the points in while all of Nicholas County's attempts were futile. The Greyhounds continued to pour it on throughout the remainder of the contest, and at the final buzzer, the Jackets were on the short side of a 58-38 score.

Paris came out hot right from the outset of the second half, hitting the first two baskets of that quarter. Then baskets by McLean and Pryor brought Nicholas back to within two, at 28-26. But Paris never looked back from that point on. They banged the points in while all of Nicholas County's attempts were futile. The Greyhounds continued to pour it on throughout the remainder of the contest, and at the final buzzer, the Jackets were on the short side of a 58-38 score.

Paris came out hot right from the outset of the second half, hitting the first two baskets of that quarter. Then baskets by McLean and Pryor brought Nicholas back to within two, at 28-26. But Paris never looked back from that point on. They banged the points in while all of Nicholas County's attempts were futile. The Greyhounds continued to pour it on throughout the remainder of the contest, and at the final buzzer, the Jackets were on the short side of a 58-38 score.

Kroger DISCOUNT FOOD STORES

Paris girls team was just too much for Nicholas County's girls to handle, and they went from a one-point trailing margin at the end of the second quarter, to a 24-point deficit by the end of the game.

The Nicholas County squad was outscored, 59-7, in the third quarter to go behind the Greyhounds, and never again pose a real threat.

Paris broke out into the lead, 61-60, in the game before Carla Pryor's basket brought the score to 63. Then Deanna Darrell hit a shot, to pull Nicholas County to within three, 65-62. With 1:21 remaining in the first period, Carla Pryor brought the Jackets to within a single point, 64-63.

Shelia McLean hit the opening basket of the second quarter for Nicholas County, to bring the Jackets back to within one point of the Greyhounds, at 13-11. Paris retaliated in the Nicholas County second and went out to a 17-11 lead. Just four straight points by Tara Bowen pulled Nicholas County to within two points of Paris, at 17-15. Then Tara hit her third straight shot and handed the Jackets a tie score, at 17 all.

Paris then hit four straight scores, and Carla Pryor's free throw led the Jackets within a single

pointing venture of turning the tables on the Greyhounds.

Paris came out hot right from the outset of the second half, hitting the first two baskets of that quarter. Then baskets by McLean and Pryor brought Nicholas back to within two, at 28-26. But Paris never looked back from that point on. They banged the points in while all of Nicholas County's attempts were futile. The Greyhounds continued to pour it on throughout the remainder of the contest, and at the final buzzer, the Jackets were on the short side of a 58-38 score.

Paris came out hot right from the outset of the second half, hitting the first two baskets of that quarter. Then baskets by McLean and Pryor brought Nicholas back to within two, at 28-26. But Paris never looked back from that point on. They banged the points in while all of Nicholas County's attempts were futile. The Greyhounds continued to pour it on throughout the remainder of the contest, and at the final buzzer, the Jackets were on the short side of a 58-38 score.

Paris came out hot right from the outset of the second half, hitting the first two baskets of that quarter. Then baskets by McLean and Pryor brought Nicholas back to within two, at 28-26. But Paris never looked back from that point on. They banged the points in while all of Nicholas County's attempts were futile. The Greyhounds continued to pour it on throughout the remainder of the contest, and at the final buzzer, the Jackets were on the short side of a 58-38 score.

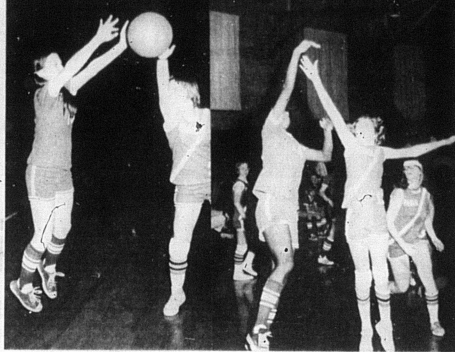
Nicholas County girls fall 59-35

Paris girls team was just too much for Nicholas County's girls to handle, and they went from a one-point trailing margin at the end of the second quarter, to a 24-point deficit by the end of the game.

What's going on?

You don't have to ask that question when you read the daily Courier-Journal. Mail this coupon by March 1, 1975 to get The Courier-Journal's big Bargain Offer.

Mail orders cannot be accepted from localities served by carrier delivery. Offer good only in Kentucky and Indiana. To BARGAIN OFFER The Courier-Journal, Louisville, Ky. 40202. Find enclosed \$27.30 (Courier-Journal at \$24.00 plus \$1.30 Ky. sales tax), for which please enter my subscription for one full year for THE DAILY Courier-Journal.



Deanna Darrell finds this shot a little harder to get off than she had expected during the Girls game with Paris. The girls lost the game 58-38, after trailing by only one point at the end of the first half.—Smith photo

Kentucky reflections

By George Street Boone. These are times to test our mettle. Confronted as we are with the Organization of Petroleum Exporting Countries and its pricing of crude oil prices, it seems far from adequate to talk of reducing consumption, seeking alternative sources and similar unrealistic palliatives to meet our needs in the next five to ten years. In truth, the exploited are simply turning on to exploiters, thus giving them a bad time. Weaknesses of O.P.E.C. are already surfacing if the will to respond can be rallied. Kentucky's motto, derived from one of Aeschylus' fables, reminds us that "United We Stand, Divided We Fall." And surely, like countries of Western Europe and Japan, the industrialized nations, have the resources to master this situation without the resort to military force which seems to some the only solution to many problems. Looking to classic examples, a ready model appears. In an excess of greed, King Midas requested that the God, Pan, grant him a golden touch, that everything he touched be turned to gold. His foolish wish having been granted, he nearly starved because every morsel of food he touched turned, to that precious metal. In desperation, he begged to be relieved of the gift and that surrived.

With the quadrupling of oil prices, much gold or its equivalent flows to the oil exporting nations and the principal use of these accumulating reserves is to buy what these countries cannot produce for themselves. The management of the international oil trade was wrested from the oil companies by the O.P.E.C. in the early 1970's. The Western Nations had not sought to control the trade, but had largely left its management to the international corporations. These O.P.E.C. countries need food, they need steel, they need machinery, and surely, they think they need munitions and the tools of war. The markets from which they obtain these necessities are Japan, the countries of Western Europe and North America. What good is gold to a starving man? It is useful only as it will supply him with food.

If the market is to be a managed one, to the industrialized countries which as the United States and Canada, lack the will and the wit to continue to respond to O.P.E.C.'s 11 countries are so decadent, then perhaps these countries should attempt to control the trade, but have finished their courses and one should anticipate their bankruptcy and disintegration. Kentucky as an exporter of food and tobacco has its contribution to make and surely O.P.E.C., no matter what its supplies of gold cannot, in the foreseeable future, produce their cars, trucks, planes and tanks which they look so covetously. Can these countries afford to destroy the economies of nations which build their refineries and produce the tankers to carry their precious oil to the world markets? World crude oil prices have already begun to decline noticeably, almost certainly due to the reduced consumption by industrial nations. Libya and Algeria have reduced their official price. A surplus of crude oil in the magnitude of millions of barrels a day is reported to be producing hidden discounting by many oil producing countries. The shared greed of the O.P.E.C. is scarcely an adequate foundation upon which the cartel can be maintained indefinitely. This state and this country produce things these oil producing countries desperately need if they are to improve their lot. These products are not available in adequate quantity outside

IMAGE PAINT
Our GUARANTEE To You On Each Can. GUARANTEED EQUAL IN QUALITY TO THE FINEST MADE. Will cover any color with only one coat when applied at a rate not to exceed 60 square feet per gallon. If you are not satisfied, our 5 & 5 Store will furnish free additional paint to assure coverage or refund the full purchase price.

image LATEX FLAT WALL 116A-PLANTATION WHITE. \$6.95 per gal. ALSO AVAILABLE IN LATEX SEMI-GLOSS ENAMEL!

We can custom mix over 1407 colors! For anything in paint from basement to roof visit our paint department

Reid & Vice Builder Supply
101 South Broadway Phone 289-5279

Terminix OF LEXINGTON, KENTUCKY

If cash can help with Spring Clothes

call us now. Today, We have immediate cash for spring clothes... home fix-up... medical bills... unexpected emergencies... whatever you need or want.

Clear up those old debts! Even if you have a loan now, we have plans that can provide the additional cash you need... and often lower your total monthly payment! Call us right now or drop in anytime for fast, courteous service—and CASH!

LIBERTY LOAN CORPORATION OF CARLISLE
221 LOCUST STREET — PHONE: 289-2261
Carlisle, Kentucky 40311
Open Friday 'til 6 Saturday 'til 3 P.M.

Classes to be held in needlecraft

A series of three classes in needlecraft will be taught beginning March 3 at 7 p.m. at the home of Mrs. Eugene Neal on Chestnut Street. The other two classes will be on March 11 and March 17 at the same time and place.

The lessons will include instructions in crewel embroidery, crochet, needlepoint and any other needlecraft in which you might be interested.

Come and bring a friend and learn a new skill in needlecraft. Bring your own material to work along with others.

The classes are sponsored by the Home Economics Department of the Nicholas County High School and will be taught by Mrs. Bonnie Metcalfe and Mrs. Martha Sue Taylor. For more information call 289-7112, 289-5092 or 289-5303.

we make electrical repairs!
Service your TV or Radios. Contract Wiring—Call for a FREE Estimate.
DUNCAN'S ELECTRICAL SHOP

Order Your Fertilizer Today at Southern States Carlisle Coop.

6-12-12 Muriate 5-20-20 Muriate 5-10-15 Sulphate

BULK

5-20-20 Muriate 10-10-10 Muriate 6-12-12 Muriate 5-10-15 Sulphate 8-10-15 Sulphate

Order and pay for Bulk Fertilizer now and take delivery in Spring at Guaranteed Prices.

Bulk Fertilizer can be delivered by our spreader truck, your truck or one of our spreader buggies.

Bagged Fertilizer can be picked up at our store or delivered by our trucks.

PLANT BED SUPPLIES:

- 2 ml plastic cover 100'x12' \$10.00
- 3 ml plastic cover 100'x12' \$12.00
- Meth Bromide 95' per can, 90' case lots
- 3A Tobacco canvas \$34.60
- 4A Tobacco canvas \$39.20
- Tobacco seed & plant bed fertilizer

Taking Bookings on Spring Field Seeds, Seed Corn, and Baler Twine, and Atrazine.

Southern States Carlisle Cooperative
211 T.M. Carlisle, Ky. SOUTHERN STATES COOPERATIVE AGENCY