

# Kentucky Reflections

by George Street Boone

There is an old story that not even a grown man should see the making of sausage or the passage of legislation. Some would add to this the process of government.

But one wonders if even the presence of the philosophical types who drafted our First Amendment anticipated the love affair between the American people and its right to know. If the genius of the Constitution is to be located in any one provision of that document, then it must be in the First Amendment. Here reveals the concept that in a society, if you have an informed body politic which is then free to act upon the basis of the information provided to it, then more often than not, the correct decision will be made.

Governor Carroll observed early this year to the Kentucky Press Association that governments have been historically unwilling to grant the power of information to citizens, especially in the matter of politics. Secrecy in a democratic society, he said, is a source of illegal power. First because withholding information contradicts

**A WORD TO THE WISE IS DIRECT DEPOSIT OF YOUR SOCIAL SECURITY CHECK.**

**WE OFFER YOU THIS:**

- A new convenience, recommended by the government, which will cost you nothing but will provide you with:
- SAFETY (You won't be a potential burglar victim.)
- PEACE OF MIND (No more worry about having your check stolen from the mailbox.)
- RESTFUL NIGHTS (Your money will be safe in the bank, where it should be.)

Social Security Recipients may now arrange to have their monthly checks mailed directly to us.

All you have to do is sign a simple form to have this service.

One more way we have of serving you with the best.

**DEPOSIT BANK OF CARLISLE, KY.**  
ESTABLISHED 1851

Our Second Century of Dependable and Dignified Service

© W. J. MER, 1975 MEMBER F. D. I. C.

**WE'VE JUST INVENTED AN IDEA**

**REACH** for 2

**The Carlisle Mercury** at these news stands

Jerry's IGA Foodliner C & G Foodtown

Neal's Square Deal Grocery

Carlisle Drug Co. Hopkins Drug Store

Marshall's Restaurant Evans' Tasty Freeze

D & A Grocery Mitchell's Grocery

Weaver's Grocery The Sewing Basket

**REACH**

**Top Value Stamps**

at "The Drug Store" that gives Top Value Stamps

**Carlisle Drug Co.**  
THE REGULAR STORE  
CARLISLE, KY.

# New battle of Blue Licks looms

by James O. Cracraft

Some hail, rain, snow or sleet—nothing except the Falmouth Dam will stop the building of Blue Licks Lodge. There is a new battle of Blue Licks—the battle of words; the battle of letters and if necessary a march on Frankfort—this battle is known as "The Battle for the Blue of the Blue Licks Lodge."

The battle of words and actions has been at 1200 m.m. Aug. 15 with the welcome given by Coordinator James O. Cracraft and ended with the benediction given by the Rev. Dallas Sugg at the first Blue Licks Day since the march. Attendance at the celebration was estimated at 1,000. Mr. Cracraft in his welcome stated that no state park in Kentucky can claim national significance as Blue Licks does. It has been the least developed.

Dr. Robert Martin, speaking for the Kentucky Historical Society, said that it took the 1,000 Blue Licks to make Boonesboro what it is today. He also stated that the Kentucky Historical Society had the largest membership in the nation as compared to other state historical societies.

State Representative Adrian Arnold said, Sterling stated "Blue Licks has been a peaceful area for 180 years, but there is a new battle emerging in this sacred battleground—it is known as the army of people of this area; their troops are growing in numbers, they are gaining strength and they have tremendous support and this army is battling for recognition as state and national that is the Blue Licks State Park."

We, the army of this area, will continue to fight, until the battle is won, for the prestige, the recognition and facilities which are due Blue Licks State Park.

Mrs. Andrew C. Duke from Mayville, representing the DAR, said that God was really smiling on us when He granted the privilege of living in Kentucky. She brought greetings from the Kentucky Society of the Daughters of the American Revolution. She also discussed briefly the Buffalo Trace Tourism Committee and their efforts to obtain the lodge. She pointed out that the fight for the lodge now includes ten counties.

T. Ross Moore, of Mt. Olive, in his presentation "The Significance of Blue Licks," stated that Blue Licks has three claims to fame: 1. It is one of the best sources of mastodon bones in this country; 2. It was the site of the last battle of the Revolution; and 3. It was long the best known mineral spring in the United States. He also stated that when the lodge was built, it was the fourth hotel at Blue Licks.

Attorney Joe Conley, of Nicholas County, used as his logo, "How the Park Came into Being." He pointed out the fact that in 1882 a celebration was held at the Battleground Church and a cornerstone was laid for the present day monument at Blue Licks which was built in 1878. The late Rep. W. J. Curtis was the speaker at the dedication of "Blue Licks" according to Conley. He stated that "efforts were being made to make the drama 'Simon Kenton' run all next summer at the park."

County Attorney G. A. Falmoro of Robertson county to be commended for the tremendous job he did as the expert Master of Ceremonies. Earl Mac Linville, Mt. Olive Mayor, did an excellent job as song leader without musical accompaniment.

Attorney Falmoro addressed some of the esteemed citizens in the audience and perhaps he overlooked some. Mrs. Laurel McInish, curator of the museum and park; Hon. Charles Paynter, dean of Kentucky lawyers; Rep. Jesse Hughes, father of Superintendent Gene Hughes, age 95; Superior Judge Foster Hanson; Attorney J. Thaxton Sims of Oymbina. Mayor W. H. Harner read the poem, "Heritage of Blue Licks."

Mrs. Bert Combs, who returned to the battleground country especially for the Blue Licks Day, stated "To get a mile's attention you get to hit him over the head with the two-by-four until you can crush his real good and that's what we intend to do—all the powers over the head with the two-by-four until we get their attention and I've already started. We will be camp in Frankfort until we get our lodge."

In speaking of the feasibility study for the lodge now underway as of Aug. 15, by Commissioner Bruce Montgomery he said "Judge Combs built a lot of parks in this state and I didn't have a feasibility study and we didn't worry about federal money—that's my first two-by-four Bill Thompson." She stated she had been in contact with Governor Carroll and how expressed her great interest in the lodge. She also commented on the fact that if Judge Combs had been elected Governor, the foundation for the lodge would have been laid.

**BROWNING**

The Kentucky Heritage Commission was the topic of Louis N. Browning of Mayville. Browning gave a brief history of the commission, the purpose of the commission, the responsibilities of the commission, and how properties and great places are listed. He also listed local additions to the National Register which appeared in an early edition of this paper.

Representative John Swisher of Oymbina in his research stated that it was a high honor to represent Harrison county and that we need more programs like Blue Licks Day throughout the nation. He told that Bill Thompson if he didn't plan to build the lodge he would suggest he not come back next year. He said, "We will use the lodge built, that 200,000 visitors came to Blue Licks last year and this without the aid of a state publisher brochure." He also advised everyone in this area to read the inscription on the Monument at Blue Licks.

Coming from Fleming county, Attorney Frank McCarty stated that this area was lucky that it had the majority of covered bridges in Kentucky. The reasons he gave for people coming to this area to stay

**FIRE Insurance**

On Tobacco

Harold Letton  
289-5346

**ACTUAL USE REPORT**

THE GOVERNMENT OF CARLISLE CITY

JAL CATEGORIES	ACTUAL EXPENDITURES	PERCENTAGE	REMARKS
1. PUBLIC SAFETY	\$ 500		
2. INFRASTRUCTURE	\$ 500		
3. PUBLIC UTILITIES	\$ -		
4. HEALTH	\$ -		
5. RECREATION	\$ -		
6. LIBRARIES	\$ 1,000		
7. SOCIAL SERVICES	\$ -		
8. FINANCIAL INSTITUTIONS	\$ -		
9. HEALTH AND SAFETY	\$ -		
10. EDUCATION	\$ -		
11. DEVELOPMENT	\$ 5,145		
12. INTEREST ON DEBT	\$ -		
13. DEBT SERVICE	\$ 7,800		
14. TOTAL	\$ 16,145		
15. TOTALS	\$ 26,330	100.00	

RECOMMENDATION REQUIREMENTS HAVE BEEN MET

15. REVENUE FROM TAXES AND FEES: \$ 27,330

16. REVENUE FROM BONDS: \$ 2,330

17. REVENUE FROM OTHER SOURCES: \$ 7,800

18. TOTAL REVENUE: \$ 37,460

19. TOTAL EXPENDITURES: \$ 37,460

20. BALANCE AT END OF YEAR: \$ 0.00

21. TOTAL ASSETS: \$ 0.00

22. TOTAL LIABILITIES: \$ 0.00

23. TOTAL EQUITY: \$ 0.00

24. TOTAL DEBT: \$ 0.00

25. TOTAL NET WORTH: \$ 0.00

26. TOTAL ASSETS LESS LIABILITIES: \$ 0.00

27. TOTAL NET WORTH LESS DEBT: \$ 0.00

28. TOTAL EQUITY LESS DEBT: \$ 0.00

29. TOTAL ASSETS LESS DEBT LESS EQUITY: \$ 0.00

30. TOTAL NET WORTH LESS DEBT LESS EQUITY: \$ 0.00

31. TOTAL ASSETS LESS DEBT LESS EQUITY LESS NET WORTH: \$ 0.00

32. TOTAL NET WORTH LESS DEBT LESS EQUITY LESS NET WORTH: \$ 0.00

33. TOTAL ASSETS LESS DEBT LESS EQUITY LESS NET WORTH LESS NET WORTH: \$ 0.00

34. TOTAL NET WORTH LESS DEBT LESS EQUITY LESS NET WORTH LESS NET WORTH: \$ 0.00

35. TOTAL ASSETS LESS DEBT LESS EQUITY LESS NET WORTH LESS NET WORTH LESS NET WORTH: \$ 0.00

36. TOTAL NET WORTH LESS DEBT LESS EQUITY LESS NET WORTH LESS NET WORTH LESS NET WORTH: \$ 0.00

37. TOTAL ASSETS LESS DEBT LESS EQUITY LESS NET WORTH LESS NET WORTH LESS NET WORTH LESS NET WORTH: \$ 0.00

38. TOTAL NET WORTH LESS DEBT LESS EQUITY LESS NET WORTH LESS NET WORTH LESS NET WORTH LESS NET WORTH: \$ 0.00

39. TOTAL ASSETS LESS DEBT LESS EQUITY LESS NET WORTH LESS NET WORTH LESS NET WORTH LESS NET WORTH LESS NET WORTH: \$ 0.00

40. TOTAL NET WORTH LESS DEBT LESS EQUITY LESS NET WORTH LESS NET WORTH LESS NET WORTH LESS NET WORTH LESS NET WORTH: \$ 0.00

41. TOTAL ASSETS LESS DEBT LESS EQUITY LESS NET WORTH LESS NET WORTH LESS NET WORTH LESS NET WORTH LESS NET WORTH LESS NET WORTH: \$ 0.00

42. TOTAL NET WORTH LESS DEBT LESS EQUITY LESS NET WORTH LESS NET WORTH LESS NET WORTH LESS NET WORTH LESS NET WORTH LESS NET WORTH: \$ 0.00

43. TOTAL ASSETS LESS DEBT LESS EQUITY LESS NET WORTH LESS NET WORTH LESS NET WORTH LESS NET WORTH LESS NET WORTH LESS NET WORTH LESS NET WORTH: \$ 0.00

44. TOTAL NET WORTH LESS DEBT LESS EQUITY LESS NET WORTH LESS NET WORTH LESS NET WORTH LESS NET WORTH LESS NET WORTH LESS NET WORTH LESS NET WORTH: \$ 0.00

45. TOTAL ASSETS LESS DEBT LESS EQUITY LESS NET WORTH LESS NET WORTH LESS NET WORTH LESS NET WORTH LESS NET WORTH LESS NET WORTH LESS NET WORTH LESS NET WORTH: \$ 0.00

46. TOTAL NET WORTH LESS DEBT LESS EQUITY LESS NET WORTH LESS NET WORTH LESS NET WORTH LESS NET WORTH LESS NET WORTH LESS NET WORTH LESS NET WORTH LESS NET WORTH: \$ 0.00

47. TOTAL ASSETS LESS DEBT LESS EQUITY LESS NET WORTH LESS NET WORTH LESS NET WORTH LESS NET WORTH LESS NET WORTH LESS NET WORTH LESS NET WORTH LESS NET WORTH LESS NET WORTH: \$ 0.00

48. TOTAL NET WORTH LESS DEBT LESS EQUITY LESS NET WORTH LESS NET WORTH LESS NET WORTH LESS NET WORTH LESS NET WORTH LESS NET WORTH LESS NET WORTH LESS NET WORTH LESS NET WORTH: \$ 0.00

49. TOTAL ASSETS LESS DEBT LESS EQUITY LESS NET WORTH LESS NET WORTH LESS NET WORTH LESS NET WORTH LESS NET WORTH LESS NET WORTH LESS NET WORTH LESS NET WORTH LESS NET WORTH LESS NET WORTH: \$ 0.00

50. TOTAL NET WORTH LESS DEBT LESS EQUITY LESS NET WORTH LESS NET WORTH LESS NET WORTH LESS NET WORTH LESS NET WORTH LESS NET WORTH LESS NET WORTH LESS NET WORTH LESS NET WORTH LESS NET WORTH: \$ 0.00

51. TOTAL ASSETS LESS DEBT LESS EQUITY LESS NET WORTH LESS NET WORTH LESS NET WORTH LESS NET WORTH LESS NET WORTH LESS NET WORTH LESS NET WORTH LESS NET WORTH LESS NET WORTH LESS NET WORTH LESS NET WORTH: \$ 0.00

52. TOTAL NET WORTH LESS DEBT LESS EQUITY LESS NET WORTH LESS NET WORTH LESS NET WORTH LESS NET WORTH LESS NET WORTH LESS NET WORTH LESS NET WORTH LESS NET WORTH LESS NET WORTH LESS NET WORTH LESS NET WORTH: \$ 0.00

53. TOTAL ASSETS LESS DEBT LESS EQUITY LESS NET WORTH LESS NET WORTH LESS NET WORTH LESS NET WORTH LESS NET WORTH LESS NET WORTH LESS NET WORTH LESS NET WORTH LESS NET WORTH LESS NET WORTH LESS NET WORTH LESS NET WORTH: \$ 0.00

54. TOTAL NET WORTH LESS DEBT LESS EQUITY LESS NET WORTH LESS NET WORTH LESS NET WORTH LESS NET WORTH LESS NET WORTH LESS NET WORTH LESS NET WORTH LESS NET WORTH LESS NET WORTH LESS NET WORTH LESS NET WORTH LESS NET WORTH: \$ 0.00

55. TOTAL ASSETS LESS DEBT LESS EQUITY LESS NET WORTH LESS NET WORTH LESS NET WORTH LESS NET WORTH LESS NET WORTH LESS NET WORTH LESS NET WORTH LESS NET WORTH LESS NET WORTH LESS NET WORTH LESS NET WORTH LESS NET WORTH: \$ 0.00

56. TOTAL NET WORTH LESS DEBT LESS EQUITY LESS NET WORTH LESS NET WORTH LESS NET WORTH LESS NET WORTH LESS NET WORTH LESS NET WORTH LESS NET WORTH LESS NET WORTH LESS NET WORTH LESS NET WORTH LESS NET WORTH LESS NET WORTH: \$ 0.00

57. TOTAL ASSETS LESS DEBT LESS EQUITY LESS NET WORTH LESS NET WORTH LESS NET WORTH LESS NET WORTH LESS NET WORTH LESS NET WORTH LESS NET WORTH LESS NET WORTH LESS NET WORTH LESS NET WORTH LESS NET WORTH LESS NET WORTH: \$ 0.00

58. TOTAL NET WORTH LESS DEBT LESS EQUITY LESS NET WORTH LESS NET WORTH LESS NET WORTH LESS NET WORTH LESS NET WORTH LESS NET WORTH LESS NET WORTH LESS NET WORTH LESS NET WORTH LESS NET WORTH LESS NET WORTH LESS NET WORTH: \$ 0.00

59. TOTAL ASSETS LESS DEBT LESS EQUITY LESS NET WORTH LESS NET WORTH LESS NET WORTH LESS NET WORTH LESS NET WORTH LESS NET WORTH LESS NET WORTH LESS NET WORTH LESS NET WORTH LESS NET WORTH LESS NET WORTH LESS NET WORTH: \$ 0.00

60. TOTAL NET WORTH LESS DEBT LESS EQUITY LESS NET WORTH LESS NET WORTH LESS NET WORTH LESS NET WORTH LESS NET WORTH LESS NET WORTH LESS NET WORTH LESS NET WORTH LESS NET WORTH LESS NET WORTH LESS NET WORTH LESS NET WORTH: \$ 0.00

61. TOTAL ASSETS LESS DEBT LESS EQUITY LESS NET WORTH LESS NET WORTH LESS NET WORTH LESS NET WORTH LESS NET WORTH LESS NET WORTH LESS NET WORTH LESS NET WORTH LESS NET WORTH LESS NET WORTH LESS NET WORTH LESS NET WORTH: \$ 0.00

62. TOTAL NET WORTH LESS DEBT LESS EQUITY LESS NET WORTH LESS NET WORTH LESS NET WORTH LESS NET WORTH LESS NET WORTH LESS NET WORTH LESS NET WORTH LESS NET WORTH LESS NET WORTH LESS NET WORTH LESS NET WORTH LESS NET WORTH: \$ 0.00

63. TOTAL ASSETS LESS DEBT LESS EQUITY LESS NET WORTH LESS NET WORTH LESS NET WORTH LESS NET WORTH LESS NET WORTH LESS NET WORTH LESS NET WORTH LESS NET WORTH LESS NET WORTH LESS NET WORTH LESS NET WORTH LESS NET WORTH: \$ 0.00

64. TOTAL NET WORTH LESS DEBT LESS EQUITY LESS NET WORTH LESS NET WORTH LESS NET WORTH LESS NET WORTH LESS NET WORTH LESS NET WORTH LESS NET WORTH LESS NET WORTH LESS NET WORTH LESS NET WORTH LESS NET WORTH LESS NET WORTH: \$ 0.00

65. TOTAL ASSETS LESS DEBT LESS EQUITY LESS NET WORTH LESS NET WORTH LESS NET WORTH LESS NET WORTH LESS NET WORTH LESS NET WORTH LESS NET WORTH LESS NET WORTH LESS NET WORTH LESS NET WORTH LESS NET WORTH LESS NET WORTH: \$ 0.00

66. TOTAL NET WORTH LESS DEBT LESS EQUITY LESS NET WORTH LESS NET WORTH LESS NET WORTH LESS NET WORTH LESS NET WORTH LESS NET WORTH LESS NET WORTH LESS NET WORTH LESS NET WORTH LESS NET WORTH LESS NET WORTH LESS NET WORTH: \$ 0.00

67. TOTAL ASSETS LESS DEBT LESS EQUITY LESS NET WORTH LESS NET WORTH LESS NET WORTH LESS NET WORTH LESS NET WORTH LESS NET WORTH LESS NET WORTH LESS NET WORTH LESS NET WORTH LESS NET WORTH LESS NET WORTH LESS NET WORTH: \$ 0.00

68. TOTAL NET WORTH LESS DEBT LESS EQUITY LESS NET WORTH LESS NET WORTH LESS NET WORTH LESS NET WORTH LESS NET WORTH LESS NET WORTH LESS NET WORTH LESS NET WORTH LESS NET WORTH LESS NET WORTH LESS NET WORTH LESS NET WORTH: \$ 0.00

69. TOTAL ASSETS LESS DEBT LESS EQUITY LESS NET WORTH LESS NET WORTH LESS NET WORTH LESS NET WORTH LESS NET WORTH LESS NET WORTH LESS NET WORTH LESS NET WORTH LESS NET WORTH LESS NET WORTH LESS NET WORTH LESS NET WORTH: \$ 0.00

70. TOTAL NET WORTH LESS DEBT LESS EQUITY LESS NET WORTH LESS NET WORTH LESS NET WORTH LESS NET WORTH LESS NET WORTH LESS NET WORTH LESS NET WORTH LESS NET WORTH LESS NET WORTH LESS NET WORTH LESS NET WORTH LESS NET WORTH: \$ 0.00

71. TOTAL ASSETS LESS DEBT LESS EQUITY LESS NET WORTH LESS NET WORTH LESS NET WORTH LESS NET WORTH LESS NET WORTH LESS NET WORTH LESS NET WORTH LESS NET WORTH LESS NET WORTH LESS NET WORTH LESS NET WORTH LESS NET WORTH: \$ 0.00

72. TOTAL NET WORTH LESS DEBT LESS EQUITY LESS NET WORTH LESS NET WORTH LESS NET WORTH LESS NET WORTH LESS NET WORTH LESS NET WORTH LESS NET WORTH LESS NET WORTH LESS NET WORTH LESS NET WORTH LESS NET WORTH LESS NET WORTH: \$ 0.00

73. TOTAL ASSETS LESS DEBT LESS EQUITY LESS NET WORTH LESS NET WORTH LESS NET WORTH LESS NET WORTH LESS NET WORTH LESS NET WORTH LESS NET WORTH LESS NET WORTH LESS NET WORTH LESS NET WORTH LESS NET WORTH LESS NET WORTH: \$ 0.00

74. TOTAL NET WORTH LESS DEBT LESS EQUITY LESS NET WORTH LESS NET WORTH LESS NET WORTH LESS NET WORTH LESS NET WORTH LESS NET WORTH LESS NET WORTH LESS NET WORTH LESS NET WORTH LESS NET WORTH LESS NET WORTH LESS NET WORTH: \$ 0.00

75. TOTAL ASSETS LESS DEBT LESS EQUITY LESS NET WORTH LESS NET WORTH LESS NET WORTH LESS NET WORTH LESS NET WORTH LESS NET WORTH LESS NET WORTH LESS NET WORTH LESS NET WORTH LESS NET WORTH LESS NET WORTH LESS NET WORTH: \$ 0.00

76. TOTAL NET WORTH LESS DEBT LESS EQUITY LESS NET WORTH LESS NET WORTH LESS NET WORTH LESS NET WORTH LESS NET WORTH LESS NET WORTH LESS NET WORTH LESS NET WORTH LESS NET WORTH LESS NET WORTH LESS NET WORTH LESS NET WORTH: \$ 0.00

77. TOTAL ASSETS LESS DEBT LESS EQUITY LESS NET WORTH LESS NET WORTH LESS NET WORTH LESS NET WORTH LESS NET WORTH LESS NET WORTH LESS NET WORTH LESS NET WORTH LESS NET WORTH LESS NET WORTH LESS NET WORTH LESS NET WORTH: \$ 0.00

78. TOTAL NET WORTH LESS DEBT LESS EQUITY LESS NET WORTH LESS NET WORTH LESS NET WORTH LESS NET WORTH LESS NET WORTH LESS NET WORTH LESS NET WORTH LESS NET WORTH LESS NET WORTH LESS NET WORTH LESS NET WORTH LESS NET WORTH: \$ 0.00

79. TOTAL ASSETS LESS DEBT LESS EQUITY LESS NET WORTH LESS NET WORTH LESS NET WORTH LESS NET WORTH LESS NET WORTH LESS NET WORTH LESS NET WORTH LESS NET WORTH LESS NET WORTH LESS NET WORTH LESS NET WORTH LESS NET WORTH: \$ 0.00

80. TOTAL NET WORTH LESS DEBT LESS EQUITY LESS NET WORTH LESS NET WORTH LESS NET WORTH LESS NET WORTH LESS NET WORTH LESS NET WORTH LESS NET WORTH LESS NET WORTH LESS NET WORTH LESS NET WORTH LESS NET WORTH LESS NET WORTH: \$ 0.00

81. TOTAL ASSETS LESS DEBT LESS EQUITY LESS NET WORTH LESS NET WORTH LESS NET WORTH LESS NET WORTH LESS NET WORTH LESS NET WORTH LESS NET WORTH LESS NET WORTH LESS NET WORTH LESS NET WORTH LESS NET WORTH LESS NET WORTH: \$ 0.00

82. TOTAL NET WORTH LESS DEBT LESS EQUITY LESS NET WORTH LESS NET WORTH LESS NET WORTH LESS NET WORTH LESS NET WORTH LESS NET WORTH LESS NET WORTH LESS NET WORTH LESS NET WORTH LESS NET WORTH LESS NET WORTH LESS NET WORTH: \$ 0.00

83. TOTAL ASSETS LESS DEBT LESS EQUITY LESS NET WORTH LESS NET WORTH LESS NET WORTH LESS NET WORTH LESS NET WORTH LESS NET WORTH LESS NET WORTH LESS NET WORTH LESS NET WORTH LESS NET WORTH LESS NET WORTH LESS NET WORTH: \$ 0.00

84. TOTAL NET WORTH LESS DEBT LESS EQUITY LESS NET WORTH LESS NET WORTH LESS NET WORTH LESS NET WORTH LESS NET WORTH LESS NET WORTH LESS NET WORTH LESS NET WORTH LESS NET WORTH LESS NET WORTH LESS NET WORTH LESS NET WORTH: \$ 0.00

85. TOTAL ASSETS LESS DEBT LESS EQUITY LESS NET WORTH LESS NET WORTH LESS NET WORTH LESS NET WORTH LESS NET WORTH LESS NET WORTH LESS NET WORTH LESS NET WORTH LESS NET WORTH LESS NET WORTH LESS NET WORTH LESS NET WORTH: \$ 0.00

86. TOTAL NET WORTH LESS DEBT LESS EQUITY LESS NET WORTH LESS NET WORTH LESS NET WORTH LESS NET WORTH LESS NET WORTH LESS NET WORTH LESS NET WORTH LESS NET WORTH LESS NET WORTH LESS NET WORTH LESS NET WORTH LESS NET WORTH: \$ 0.00

87. TOTAL ASSETS LESS DEBT LESS EQUITY LESS NET WORTH LESS NET WORTH LESS NET WORTH LESS NET WORTH LESS NET WORTH LESS NET WORTH LESS NET WORTH LESS NET WORTH LESS NET WORTH LESS NET WORTH LESS NET WORTH LESS NET WORTH: \$ 0.00

88. TOTAL NET WORTH LESS DEBT LESS EQUITY LESS NET WORTH LESS NET WORTH LESS NET WORTH LESS NET WORTH LESS NET WORTH LESS NET WORTH LESS NET WORTH LESS NET WORTH LESS NET WORTH LESS NET WORTH LESS NET WORTH LESS NET WORTH: \$ 0.00

89. TOTAL ASSETS LESS DEBT LESS EQUITY LESS NET WORTH LESS NET WORTH LESS NET WORTH LESS NET WORTH LESS NET WORTH LESS NET WORTH LESS NET WORTH LESS NET WORTH LESS NET WORTH LESS NET WORTH LESS NET WORTH LESS NET WORTH: \$ 0.00

90. TOTAL NET WORTH LESS DEBT LESS EQUITY LESS NET WORTH LESS NET WORTH LESS NET WORTH LESS NET WORTH LESS NET WORTH LESS NET WORTH LESS NET WORTH LESS NET WORTH LESS NET WORTH LESS NET WORTH LESS NET WORTH LESS NET WORTH: \$ 0.00

91. TOTAL ASSETS LESS DEBT LESS EQUITY LESS NET WORTH LESS NET WORTH LESS NET WORTH LESS NET WORTH LESS NET WORTH LESS NET WORTH LESS NET WORTH LESS NET WORTH LESS NET WORTH LESS NET WORTH LESS NET WORTH LESS NET WORTH: \$ 0.00

92. TOTAL NET WORTH LESS DEBT LESS EQUITY LESS NET WORTH LESS NET WORTH LESS NET WORTH LESS NET WORTH LESS NET WORTH LESS NET WORTH LESS NET WORTH LESS NET WORTH LESS NET WORTH LESS NET WORTH LESS NET WORTH LESS NET WORTH: \$ 0.00

93. TOTAL ASSETS LESS DEBT LESS EQUITY LESS NET WORTH LESS NET WORTH LESS NET WORTH LESS NET WORTH LESS NET WORTH LESS NET WORTH LESS NET WORTH LESS NET WORTH LESS NET WORTH LESS NET WORTH LESS NET WORTH LESS NET WORTH: \$ 0.00

94. TOTAL NET WORTH LESS DEBT LESS EQUITY LESS NET WORTH LESS NET WORTH LESS NET WORTH LESS NET WORTH LESS NET WORTH LESS NET WORTH LESS NET WORTH LESS NET WORTH LESS NET WORTH LESS NET WORTH LESS NET WORTH LESS NET WORTH: \$ 0.00

95. TOTAL ASSETS LESS DEBT LESS EQUITY LESS NET WORTH LESS NET WORTH LESS NET WORTH LESS NET WORTH LESS NET WORTH LESS NET WORTH LESS NET WORTH LESS NET WORTH LESS NET WORTH LESS NET WORTH LESS NET WORTH LESS NET WORTH: \$ 0.00

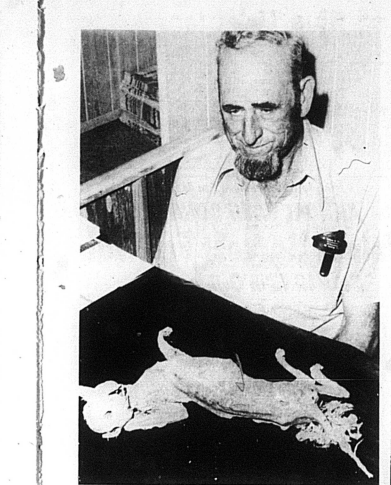
96. TOTAL NET WORTH LESS DEBT LESS EQUITY LESS NET WORTH LESS NET WORTH LESS NET WORTH LESS NET WORTH LESS NET WORTH LESS NET WORTH LESS NET WORTH LESS NET WORTH LESS NET WORTH LESS NET WORTH LESS NET WORTH LESS NET WORTH: \$ 0.00

97. TOTAL ASSETS LESS DEBT LESS EQUITY LESS NET WORTH LESS NET WORTH LESS NET WORTH LESS NET WORTH LESS NET WORTH LESS NET WORTH LESS NET WORTH LESS NET WORTH LESS NET WORTH LESS NET WORTH LESS NET WORTH LESS NET WORTH: \$ 0.00

98. TOTAL NET WORTH LESS DEBT LESS EQUITY LESS NET WORTH LESS NET WORTH LESS NET WORTH LESS NET WORTH LESS NET WORTH LESS NET WORTH LESS NET WORTH LESS NET WORTH LESS NET WORTH LESS NET WORTH LESS NET WORTH LESS NET WORTH: \$ 0.00

99. TOTAL ASSETS LESS DEBT LESS EQUITY LESS NET WORTH LESS NET WORTH LESS NET WORTH LESS NET WORTH LESS NET WORTH LESS NET WORTH LESS NET WORTH LESS NET WORTH LESS NET WORTH LESS NET WORTH LESS NET WORTH LESS NET WORTH: \$ 0.00

100. TOTAL NET WORTH LESS DEBT LESS EQUITY LESS NET WORTH LESS NET WORTH LESS NET WORTH LESS NET WORTH LESS NET WORTH LESS NET WORTH LESS NET WORTH LESS NET WORTH LESS NET WORTH LESS NET WORTH LESS NET WORTH LESS NET WORTH: \$ 0.00



Demo workshop. Several Nicholas countians were in Frankfort recently for the Democrats.

# Pleasant Valley news

Thomas George of Myers spent Saturday afternoon with Leonard Wilcoxson.

Mr. and Mrs. Audrey Earlywine had as weekend guests Mr. and Mrs. Billy Earlywine of Paris, Mr. and Mrs. Kenney Earlywine of Paris, Mrs. Faye King and family, Walter and Clifton Earlywine and Silas Campbell. Henry Herndon spent Friday afternoon with Joe Hirt.

Mr. and Mrs. Ronnie Wilcoxson and Paul Tally spent the weekend at the Sinky Mountain.

**Reid & Vice, Inc.**

SALE

SAVE \$6.05

**LATEX HOUSE PAINT SALE**

REGULAR PRICE \$21.00

**\$7.48**

WHITE ONLY IN 2 GALLON PAI

WHILE THAT STAYS WHITE

LEMS FOR YEARS

SOAP & WATER CLEAN UP

**Reid & Vice, Inc.**

BUILDERS SUPPLY



Unltd '75 Campaign Workshop. Shown with Governor Carroll from left to right are Gene Turner, H. Stanley Blake, Governor Julia Carroll and Bobby G. Anderson, Nicholas County Property Valuation Administrator.

# County eligible for \$1,213.58 matching funds

**FRANKFORT**—Nicholas county is now eligible for \$1,213.58 in the state's 1975-76 matching funds program. Of the statewide total, \$29,700 allocated to the governor's budget for the matching funds program, the 12 county Bluegrass region is eligible for \$46,700.

The statewide allocation is an increase of \$80,000 over last fiscal year's total, and Nicholas county's allocation is \$238.69 more than last year's.

Each county's allocation is determined by distributing one-fourth of the statewide total equally among the Commonwealth's 120 counties, with the remaining 75 per cent distributed on a per capita basis.

The matching funds program seeks to continue and develop programs which promote Kentucky's travel industry. The programs are a regional and local nature, with the option of the most effective means of promotion left up to each area.

The promotions can be in the form of mass media advertising (radio, television, newspaper, magazine, billboard), promotional literature featuring local or regional attractions and points of interest, or through participation in sport and travel shows.

**STUDIO STAGE CINEMA WINDSOR DR.**

MIESTERLING, KY. 40053

Wed. Sat. 8 p.m.

"Moonrunners"

Sun thru Tues. 8 p.m.

Dustin Hoffman

"Lenny"

Sat. Sun. 1:30 p.m.

Island of Blue Dolphins

**Bourbon DRIVE-IN Theatres**

AT 8:30 FRI. - SAT. - SUN.

THE MOST HIGHLY ACCLAIMED THRILLER OF THE DECADE!

**Sisters**

"The most genuinely frightening film since Hitchcock's 'Psycho!'"

"Sex and violence are blended with diabolical zest."

"First rate mystery suspenser."

"Stick, fast-paced, imaginative and scary movie..."

at "The Drug Store" that gives Top Value Stamps

**Carlisle Drug Co.**  
THE REGULAR STORE  
CARLISLE, KY.